

Date: Friday 7 November 2014
Time: 12.30pm
Meeting Room: Civic15 Meeting Room
Venue: 1 Greys Avenue
Auckland

Rural Advisory Panel

OPEN MINUTE ITEM ATTACHMENTS

ITEM	TABLE OF CONTENTS	PAGE
7	Rural Round-up of Council Activities: Overview	
A.	7 November 2014, Rural Advisory Panel, Item 7 - A Rural Round-up presentation	3

A Rural Round-up

The Land and Water Advisory Team's role in supporting the rural sector



Phil Brown
Land and Water Advisory Manager



Land and Water Advisory Team

- Who we are
- Land management advice and support
- Water quality investigations



Who we are

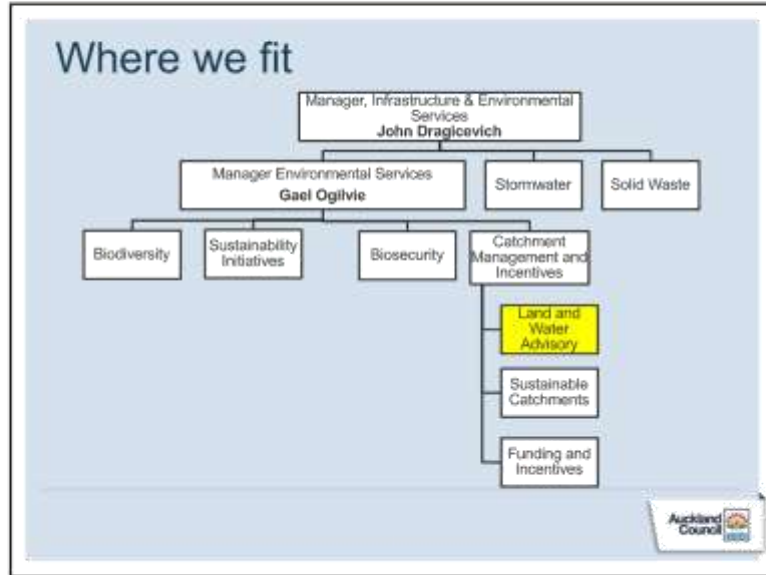
- Part of Environmental Services
- Non-regulatory – focus on community support



Land and Water Advisory Team

- Work with farmers and growers particularly
- Support and advice
- Water quality and productivity our major focus
- Research and resource development





Land management advisors


Vanessa Vujcich (north) 


Mike Martindale (south) 


Monica Xu(south) 

2 vacancies (north and central) 

Water quality advisors

Kirsten Meijer 

Andrew Noble 



Land management advice

- Often landowner initiated
- One off advice through to land management plans
- Drystock, dairy, horticulture
- One of many advisory options



One-off advice

- Dairy conversions and changes
- Riparian management
- Helping land managers deal with complaints



Land management plans

- Mostly part of Sustainable Catchments
- Options for better environmental outcomes (sediment, nutrients, faecal contamination)
- Developed jointly with the farmer or grower
- Aiming to retain profitability



Working with industry groups

Beef and Lamb – Land Env Plan workshops

Horticulture – research support, sediment guide

Forestry – Forestry Liaison Group

Dairy – work alongside their advisors



Resource development & research

- Digital soil model development
- Soil inventory
- Nitrate loss research incl. Rootzone Reality



Grant funding

- Waterway Protection Fund – supporting the fencing of waterways
- Specific catchments
 - Hoteo
 - Mahurangi
 - Whangateau
 - Papakura
 - Ngakaroa



Water quality investigations

- Chronic water quality problems
- Sediment, nutrient, faecal contamination
- Source tracking
- Mostly rural
- Solution-oriented



Water quality investigations

- Papakura faecal sources
- Upper Henderson Creek sediment sources
- Various beach water quality investigations



Land and Water Advisory Team

- Supporting sustainable rural production
- Land management advisory programme
- Water quality investigation programme



