

Date: Tuesday 10 February 2015
Time: 10.00am
Meeting Room: Level 26
Venue: 135 Albert Street
Auckland

Parks, Recreation and Sport Committee

OPEN MINUTE ITEM ATTACHMENTS

ITEM	TABLE OF CONTENTS	PAGE
10	Auckland Domain Governance	
	A. 10 February 2015, Parks, Recreation and Sport Committee, Item 10: Terms of Reference for Auckland Domain Committee	3
11	Approval for works within Auckland Domain in relation to Parnell Railway Station	
	A. 10 February 2015, Parks, Recreation and Sport Committee, Item 11: Approval for works within Auckland Domain in relation to Parnell Railway Station, power point presentation	5

DRAFT TERMS OF REFERENCE for the AUCKLAND DOMAIN COMMITTEE

Parent Bodies:

Parks, Recreation and Sport Committee (PRSC) and Waitemata Local Board (WLB)

Area of Activity

Decision-making responsibility for parks, recreation and community services and activities in Auckland Domain including those anticipated in the Auckland Domain Act 1987 which are currently exercised by PRSC or the WLB

Powers

All powers of the PRSC and WLB necessary to perform the Committee's responsibilities including those powers conferred on Council pursuant to the Auckland Domain Act 1987 except:

- a. powers that the Governing Body cannot delegate or has retained to itself (section 2)
- b. where the Committee's responsibility is limited to making a recommendation only
- c. where a matter is the responsibility of another committee or local board
- d. the approval of expenditure that is not contained within approved budgets
- e. the approval of expenditure of more than \$2 million
- f. the approval of final policy
- g. deciding significant matters for which there is high public interest and which are controversial

Membership

Chairperson:	Appointed from the Parks, Recreation and Sport Committee
Deputy Chairperson:	Appointed from the Waitemata Local Board
Members:	2 other members from the Parks, Recreation and Sport Committee 2 other members from the Waitemata Local Board
Ex officio:	Nil
IMSB appointees (s 85 (1)):	One appointee
Quorum:	Half or majority
Frequency of meetings:	Quarterly or as required but at least annually



Parnell Station

February 2015



2

Parnell Station

- AT plan to build a base case station at the Mainline Steam site by June 2015. Works to begin March 2015.
- Works are driven by funding availability and the sale of KR land.
- Works are subject to AT Board approval on the 20th February.
- The date for opening the station is currently being evaluated.
- An ecological and arboricultural survey has been undertaken with no major issues raised.



Parnell

- The base case station will provide 2 platforms, access road and turnaround and a connecting path via the existing underpass.
- The Station sits within the Rail designation.
- Potential to install a connection to Carlaw Park and this is being investigated with AC Parks.
- Options to join into track masterplan being reviewed.
- Domain slope to be cut back and soil nailed for 30m section.
- 30-35m length retaining wall required from underpass towards station. Potential overlap into Domain land.
- Construction access may require 1-2m strip behind platform. Detailed design is trying to limit this requirement with platform overhangs and flowable fill.
- Newmarket Station building is to be brought back by KR next financial year.



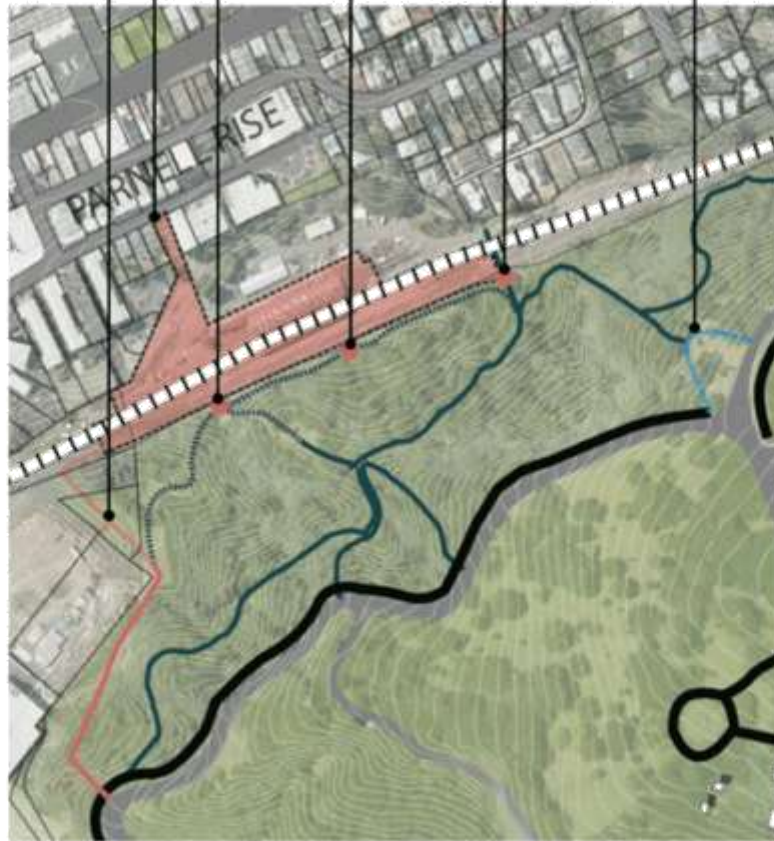
Carlaw Park link



- To follow good CPTED by providing clear sight lines it may be a requirement to remove a Pittosporum spp. tree on the corner of the park.
- Puriri adjacent would be required to be limbed back.
- AT assessing gradients following survey. Currently 1:12 could be difficult to achieve.



Domain links



Connection to Carlaw Park (part of an access agreement)

Proposed Parnell Railway Station Landscape Design Footprint

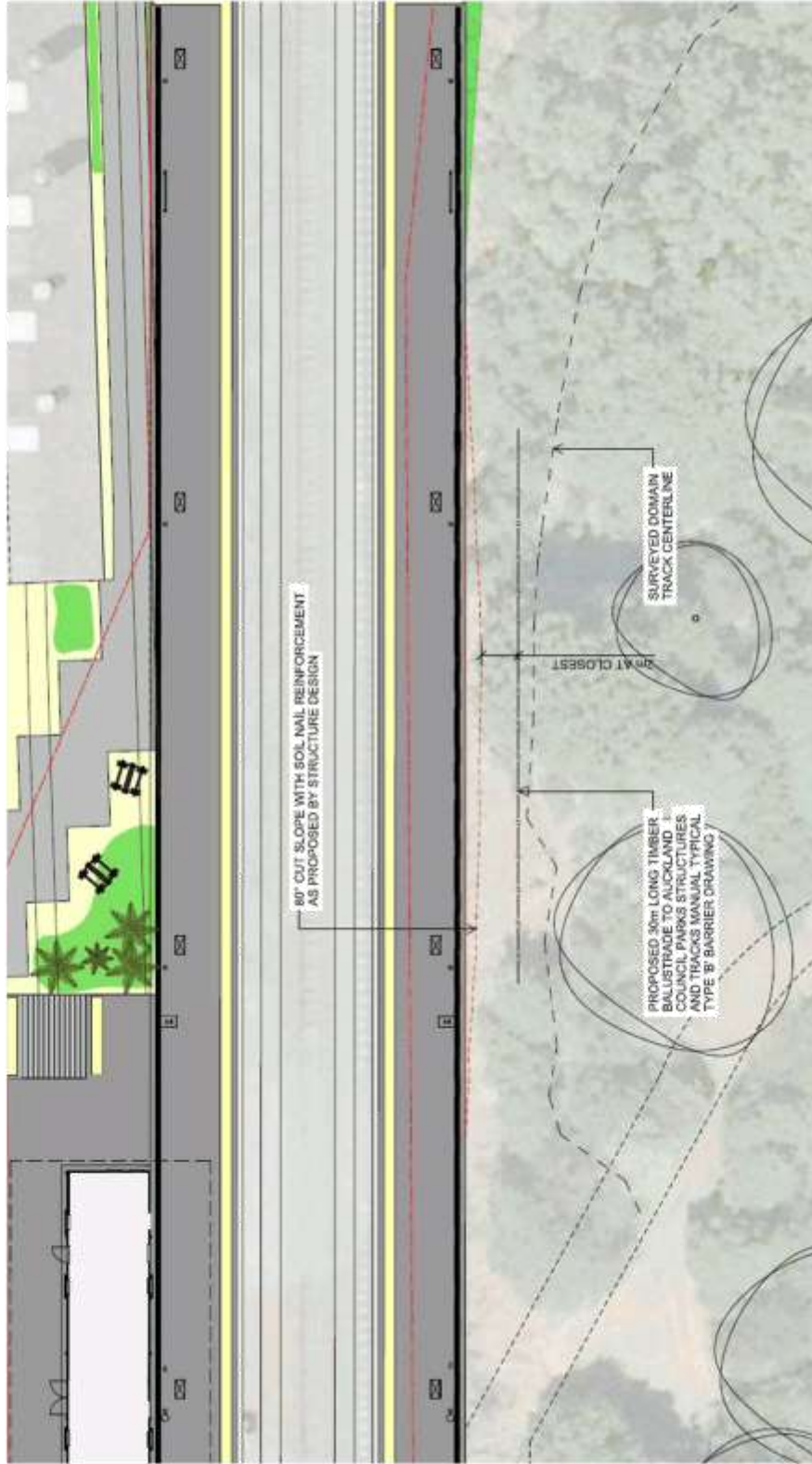
Preferred connection in trail levels pedestrian via Woodship Yard to formal bush tracks. It also acts as a central connector from Parnell Railway Station.

Connection not preferred as it disrupts protected native vegetation and a mature magnolia tree

Potential to provide a "Y" intersection at this point, to connect path into the informal track going north, and to take advantage of gentle gradient.

Defined footpath connection by Council as there currently is no footpath to lead into bush tracks

Parks trail



9

Underpass connection



10

Photos of site – Platform location

