

**Date:** Tuesday 10 February 2015  
**Time:** 6.00pm  
**Meeting Room:** Waitematā Local Board Office  
**Venue:** 35 Graham Street  
Auckland

---

## Waitematā Local Board

# OPEN MINUTE ITEM ATTACHMENTS

---

ITEM	TABLE OF CONTENTS	PAGE
9.1	<b>Public Forum - Rowan Carter, Freemans Park Body Corporate</b>	
	A. Freemans Park (Wellington St Flats) Chronology of Flooding Issues and Stormwater Management	3
17	<b>Auckland Domain Governance</b>	
	A. Draft Terms of Reference for the Auckland Domain Committee	7



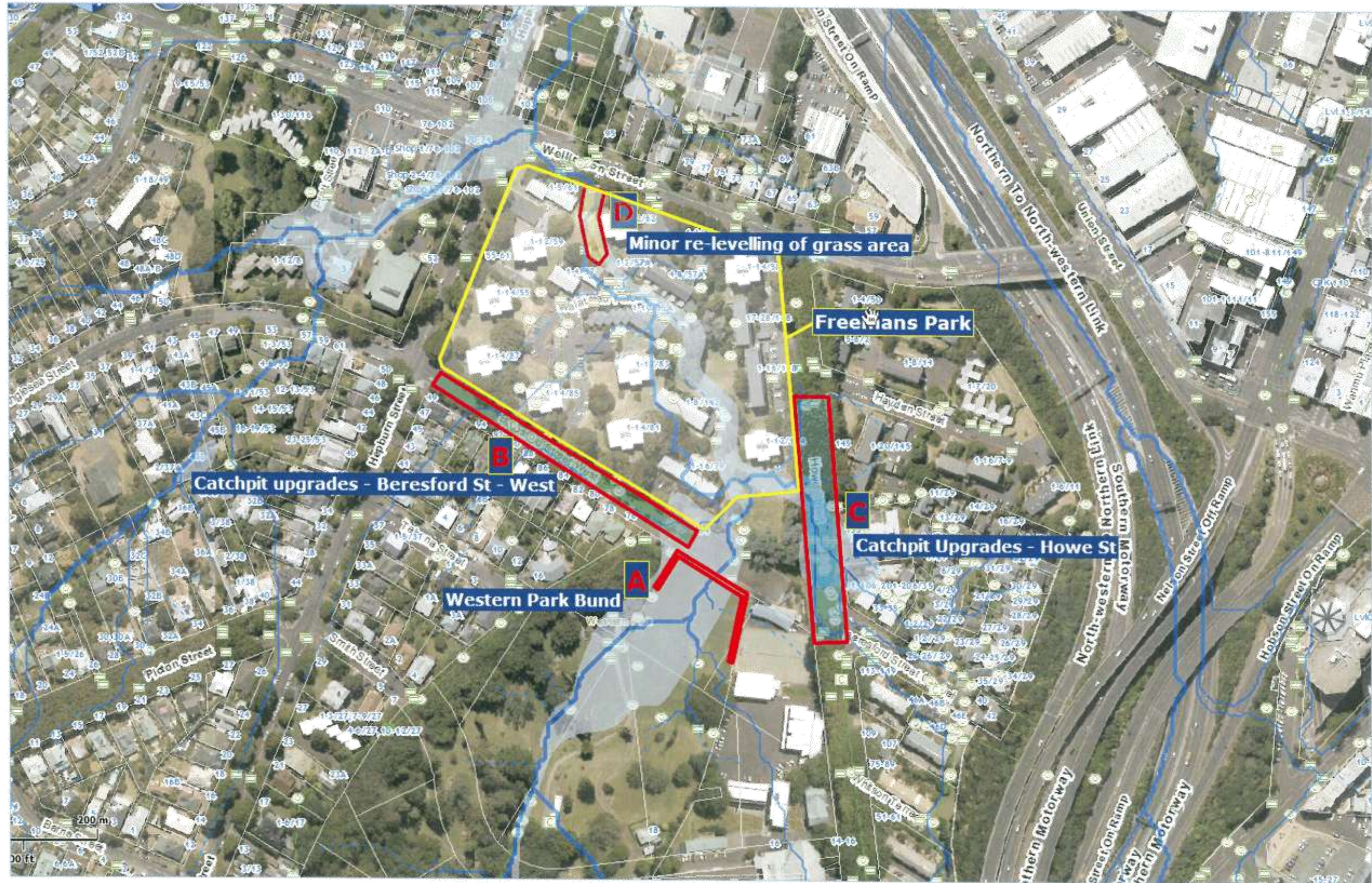
## Freemans Park (Wellington St Flats) - Chronology of Flooding Issues and Stormwater Management

- June 2000** Major flooding– habitable floors flooded
- 2001/2002** Auckland City Council engages Babbage Consultants to design a bund for Western Park, improvements to the overland flow path in the Wellington St Flats and to investigate the main trunk pipe network capacity.
- 2003** Auckland City Council constructs the Wellington Street Flats Overland flow path. Other protection measures promised.
- 2004 - 2006** Concept design of the storage in Western Park by Babbage Consultants. Project on hold - Stakeholder consultation with the former Community Board and the former Auckland City Council Parks department regarding building of a wall in Western Park
- 2007** Auckland City Council updates Flood Hazard mapping for Freeman's Bay
- 2009-2011** Major trunk upgrades under Victoria Park Tunnel and the construction of new mega pits in Wellington Street
- 2012 (3rd July)** Flooding upstream of the OLFP culvert (cars flooded, deep ponding, no habitable floors flooded)
- 2012 (6 Dec)** More flooding experienced
- 2013** Assessment of flood mitigation options and condition assessment of the trunk under Wellington St Flats.
- 2013 (16 June)** More flooding experienced

3 July 2012 Flood Event – Freemans Park







Freemans Park (Wellington St Flats) – Map Showing Proposed Flood Mitigation Measures







## **DRAFT TERMS OF REFERENCE for the AUCKLAND DOMAIN COMMITTEE**

### **Parent Bodies:**

Parks, Recreation and Sport Committee (PRSC) and Waitemata Local Board (WLB)

### **Area of Activity**

Decision-making responsibility for parks, recreation and community services and activities in Auckland Domain including those anticipated in the Auckland Domain Act 1987 which are currently exercised by PRSC or the WLB

### **Powers**

All powers of the PRSC and WLB necessary to perform the Committee's responsibilities including those powers conferred on Council pursuant to the Auckland Domain Act 1987 except:

- a. powers that the Governing Body cannot delegate or has retained to itself (section 2)
- b. where the Committee's responsibility is limited to making a recommendation only
- c. where a matter is the responsibility of another committee or local board
- d. the approval of expenditure that is not contained within approved budgets
- e. the approval of expenditure of more than \$2 million
- f. the approval of final policy
- g. deciding significant matters for which there is high public interest and which are controversial

### **Membership**

<b>Chairperson:</b>	Appointed from the Parks, Recreation and Sport Committee
<b>Deputy Chairperson:</b>	Appointed from the Waitemata Local Board
<b>Members:</b>	2 other members from the Parks, Recreation and Sport Committee 2 other members from the Waitemata Local Board
<b>Ex officio:</b>	Nil
<b>IMSB appointees (s 85 (1)):</b>	One appointee
<b>Quorum:</b>	Half or majority
<b>Frequency of meetings:</b>	Quarterly or as required but at least annually