



I hereby give notice that an ordinary meeting of the Rural Advisory Panel will be held on:

Date: Friday, 6 March 2015
Time: 12.30pm
Meeting Room: Room 1 & 2, Level 26
Venue: 135 Albert Street, Auckland

Rural Advisory Panel

OPEN AGENDA

MEMBERSHIP

Chairperson

Deputy Chairperson South

Deputy Chairperson North

Members

Cr Bill Cashmore	Franklin Ward Councillor
Alan Cole	Franklin Local Board Member
Thomas Grace	Rodney Local Board Member
Marie Appleton	Rural Women NZ
Bill Bourke	Aggregate & Quarry Assoc
Wendy Clark	Federated Farmers
Viv Dostine	Northern Equine
Trish Fordyce	NZ Forest Owners Assoc
Richard Gardner	Federated Farmers
Chris Keenan	Horticulture NZ
Brian Mason	Landowners & Contractors Protection Assoc Inc
Callum McCallum	Aquaculture Industry
Andrew McKenzie	Beef and Lamb NZ
Bill Millar	Fonterra
Helen Moodie	Dairy NZ
Roger Parton	Rural Contractors NZ and Aggregate & Quarry Assoc
Geoff Smith	Equine Industry
Peter Spencer	NZ Forest Owners Association
Bronwen Turner	Western Rural Property Owners
Keith Vallabh	Pukekohe Vegetable Growers Assoc
Cr Penny Webster	Rodney Ward Councillor
Glenn Wilcox	Independent Māori Statutory Board

(Quorum 10 members)

Elaine Stephenson
Democracy Advisor

26 February 2015

Contact Telephone: (09)890 8117

Email: Elaine.Stephenson@aucklandcouncil.govt.nz

Website: www.aucklandcouncil.govt.nz

TERMS OF REFERENCE

PURPOSE

- To identify and communicate to the Council the interest and preferences of the rural based industries and rural communities of Auckland in relation to:
 - the content of the strategies, policies, plans, and bylaws of the Council, and
 - any matter that the Panel considers to be of particular interest or concern to the rural based industries and rural communities of Auckland.
- To advise the Mayor and the Council's Governing Body and local boards, of the Council processes and mechanisms for engagement with the rural based industries and communities in Auckland.
- To deliver recommendations for accelerating the social, economic, environmental and cultural performance of the rural part of the Auckland Council region.

SCOPE

To provide a forum for consideration of issues affecting the rural part of the Auckland Council area and recommendations to Council including (but not limited to):

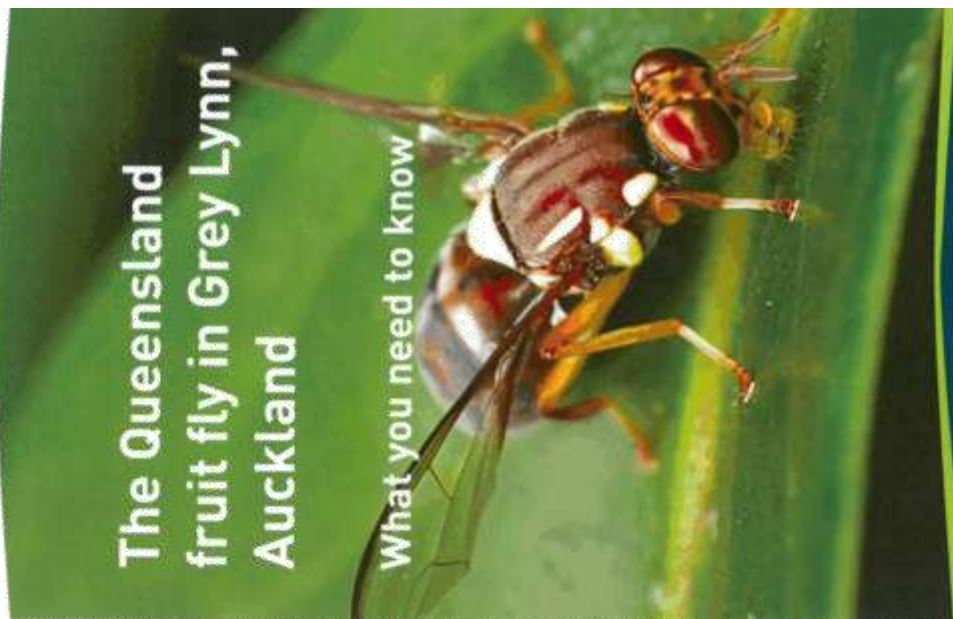
- Driving economic growth
- Food and fibre production and associated food and beverage processing (value adding) and equine based activities
- Research and development support
- Environmental resource issues including quarrying and aggregate production
- Ecological, landscape and coastal values
- Service delivery
- Rural infrastructure, including transport
- Biosecurity
- Amenities and open space
- Transport
- Rating.

ITEM TABLE OF CONTENTS

- 1 Apologies**
- 2 Declaration of Interest**
- 3 Confirmation of Minutes**
- 4 Additional Items for Consideration**
- 5 Auckland Tourism, Events and Economic Development Food and Beverage Sector Plan and Innovation Plan**
Zahra Champion and Wendy Voegelin will present to the meeting.
- 6 Queensland Fruit Fly Update**
An update will be provided.
- 7 Long-Term Plan 2015-2025 Questions**
Opportunity to ask questions regarding the Long-Term Plan.
- 8 Heritage Incentives Approach**
A PowerPoint presentation will be provided.
- 9 Kaipara River Update**
An update will be provided.
- 10 General Business**

Attachments

No.	Title	Page
A	6 March Rural Advisory Panel - Ministry for Primary Industries - Queensland fruit fly leaflet	7



The Queensland fruit fly in Grey Lynn, Auckland

What you need to know

The Queensland fruit fly has been found in the Auckland suburb of Grey Lynn.

Fruit flies are of concern as they can damage New Zealand's fruit and vegetable crops. We need your help to prevent them spreading to fruit and veggie growing areas.

WHAT SHOULD I DO IF I THINK I'VE FOUND A FRUIT FLY?

MPI is setting traps to attract any fruit flies that may be present. These traps are internationally recognised as the best method to find fruit flies. Many different insects look like fruit flies and they're very difficult to identify by untrained people. So you don't need to go looking for them.

If, however, you find eggs or larvae (baby flies – these are small worm-like bugs) inside a piece of fruit, immediately tie it inside a plastic bag and call us on:

0800 80 99 66.

And help us by allowing our staff to place traps on your property if they need to.

Thanks for your support in this operation.

Find full information on the Queensland fruit fly and the controls on fruit movement in Auckland at: www.mpi.govt.nz.

CONTACTS

Ministry for Primary Industries
PO Box 2526, Wellington 6140
Pastoral House, 25 The Terrace
Wellington, New Zealand
www.mpi.govt.nz

February 2015

New Zealand Government

ESIDENTS IN ZONE B

ease separate fruit and vegetable waste (e.g. leftovers, peel, apple cores, skins etc) from the rest of your household rubbish. General rubbish can go out with your normal rubbish collection.

spose of any fruit or vegetable waste in an in-sink waste disposal unit if you have one.

it can be disposed of in the MPI-provided wheelie bins which are in convenient locations on streets in **Zone B**.

e recommend you do not compost any fruit or vegetable waste in the meantime.

RUIT, VEGETABLES AND PLANTS OF CONCERN

ime of the key fruits and vegetables that the Queensland fruit fly likes and can be found on are:

All citrus fruits, all stone fruit, pears, passionfruit, feijoa, grapes, guava, blackberry, boysenberry, cape gooseberry, custard apple, quince, persimmon, crab-apple, toquat, umquat, pumpkin, olives, avocado, tomato, eggplant, and capsicum.



IF YOU SEE SIGNS OF FRUIT FLY CALL 0800 80 99 66

HELP KEEP QUEENSLAND FRUIT FLIES OUT OF OUR CROPS

To stop fruit fly spreading, we're asking people in the affected part of Auckland to help out by not moving fruit and veges too far from home.

We have set up what's called a Controlled Area around the fruit fly detection site. This circular area is divided into two zones – Zone A which is the higher risk area and goes out to approximately 200 metres from the find and Zone B which extends 1.5 km.

Full information on the Controlled Area, including an interactive map is on our website:

www.mpi.govt.nz

It is important that any whole fresh fruit and vegetables (except for leafy vegetables and root vegetables) are not moved out of this Controlled Area.

There is no problem with taking any fruit or vegetables into the Controlled Area from outside.

THE DETAIL ABOUT THE FRUIT AND VEGE MOVEMENT RULES

There are some more detailed rules depending on if you live in Zone A or Zone B.

RESIDENTS IN ZONE A

This is the highest risk zone as it is closest to where fruit fly has been found. There are slightly stricter requirements around the handling of fruit and vegetables.

If you live in this area, please don't move any whole fresh fruit or vegetable matter anywhere outside Zone A.

DISPOSAL OF RUBBISH

We ask that you separate out any fruit and vegetable waste (e.g. leftovers, peel, apple cores, skins etc) from the rest of your household rubbish. General rubbish can go out with your normal rubbish collection.

If you have an in-sink waste disposal unit, you can use this for getting rid of produce scraps. If you don't, please put produce waste in the special wheelie bin supplied by MPI. This will be safely disposed of.



You can also use the MPI bins for disposing of fruit and vegetable packing materials.

Do not compost any fruit or vegetable waste, including any garden waste and rubbish.

PRODUCE FROM YOUR OWN HOME GARDEN

MPI needs you to leave any home-grown fruit or vegetables that have fallen from trees or plants (windfall) on the ground your garden. MPI inspectors will collect this material to check for the presence of fruit fly.

Waste from home-grown fruit and veges that has been already chopped up and is free of any bugs can be disposed of in the MPI bin.

If you find eggs or larvae in home-grown produce, please tie the fruit or vegetable inside a plastic bag and call MPI on

0800 80 99 66.



IF YOU SEE SIGNS OF FRUIT FLY CALL 0800 80 99 66