



I hereby give notice that an ordinary meeting of the Parks, Recreation and Sport Committee will be held on:

Date: Tuesday, 9 June 2015
Time: 9.30am
Meeting Room: Otahuhu Auckland Rugby Union Club
Venue: 8 Awa Street, Otahuhu

Parks, Recreation and Sport Committee

OPEN AGENDA

MEMBERSHIP

Chairperson
Deputy Chairperson
Members

Hon Christine Fletcher, QSO

Cr Calum Penrose

Cr Dr Cathy Casey

Cr Bill Cashmore

Cr Ross Clow

Cr Chris Darby

Cr Alf Filipaina

Cr Mike Lee

Cr Dick Quax

Cr Sharon Stewart, QSM

Cr Sir John Walker, KNZM, CBE

Cr Wayne Walker

Cr John Watson

Member Glenn Wilcox

Member Karen Wilson

Ex-officio

Mayor Len Brown, JP

Deputy Mayor Penny Hulse

**Independent Maori Statutory
Board (alternate)**

Member David Taipari

Ex-officio (without voting rights) All other Councillors

(Quorum 8 members)

Quorum must include at least 2
named voting members

Tam White
Democracy Advisor
3 June 2015

Contact Telephone: (09) 890 8156

Email: tam.white@aucklandcouncil.govt.nz

Website: www.aucklandcouncil.govt.nz

Note: The reports contained within this agenda are for consideration and should not be construed as Council policy unless and until adopted. Should Members require further information relating to any reports, please contact the relevant manager, Chairperson or Deputy Chairperson.

TERMS OF REFERENCE

Areas of Activity

- Provision of regional facilities and open space
- Regional frameworks for local facility and open space provision
- Encouraging healthy lifestyles through participation in sport and recreation sectors
- Facilitating partnerships and collaborative funding models across the sport and recreation sectors
- Performing the delegation made by the Governing Body to the former Parks, Recreation and Heritage Forum, under resolution GB/2012/157 in relation to the Dog Policy

Responsibilities

Within the specified area of activity the Committee is responsible for:

- In accordance with the work programme agreed with the parent committee, developing strategy and policy, including any agreed community consultation, to recommend to the Regional Strategy and Policy Committee
- Acting as a community interface for consultation on policies and as a forum for raising community concerns, while ensuring community engagement is complementary to that undertaken by local boards
- Making decisions within delegated powers

Powers

All powers necessary to perform the Committee's responsibilities

Except:

- (a) powers that the Governing Body cannot delegate or has retained to itself (see Governing Body responsibilities)
- (b) where the Committee's responsibility is limited to making a recommendation only
- (c) where a matter is the responsibility of another committee or a local board
- (d) the approval of expenditure that is not contained within approved budgets
- (e) the approval of expenditure of more than \$2 million other than for land purchases which shall have a limit of \$5 million
- (f) the approval of final policy
- (g) deciding significant matters for which there is high public interest and which are controversial
- (h) the commissioning of reports on new policy where that policy programme of work has not been approved by the Regional Strategy and Policy Committee

EXCLUSION OF THE PUBLIC – WHO NEEDS TO LEAVE THE MEETING

Members of the public

All members of the public must leave the meeting when the public are excluded unless a resolution is passed permitting a person to remain because their knowledge will assist the meeting.

Those who are not members of the public

General principles

- Access to confidential information is managed on a “need to know” basis where access to the information is required in order for a person to perform their role.
- Those who are not members of the meeting (see list below) must leave unless it is necessary for them to remain and hear the debate in order to perform their role.
- Those who need to be present for one confidential item can remain only for that item and must leave the room for any other confidential items.
- In any case of doubt, the ruling of the chairperson is final.

Members of the meeting

- The members of the meeting remain (all Governing Body members if the meeting is a Governing Body meeting; all members of the committee if the meeting is a committee meeting).
- However, standing orders require that a councillor who has a pecuniary conflict of interest leave the room.
- All councillors have the right to attend any meeting of a committee and councillors who are not members of a committee may remain, subject to any limitations in standing orders.

Staff

- All staff supporting the meeting (administrative, senior management) remain.
- Only staff who need to because of their role may remain.

Local Board members

- Local Board members who need to hear the matter being discussed in order to perform their role may remain. This will usually be if the matter affects, or is relevant to, a particular Local Board area.

Independent Maori Statutory Board (IMSB)

- Members of the IMSB who are appointed members of the meeting remain.
- Other IMSB members and IMSB staff remain if this is necessary in order for them to perform their role.

Council Controlled Organisations (CCOs)

Representatives of a CCO can remain only if required to for discussion of a matter relevant to the CCO.

ITEM	TABLE OF CONTENTS	PAGE
1	Apologies	7
2	Declaration of Interest	7
3	Confirmation of Minutes	7
4	Petitions	7
5	Public Input	7
	5.1 Otahuhu Business Association	7
6	Local Board Input	8
	6.1 Waitakere Ranges Local Board : Hunua Ranges herbicide contamination	8
7	Extraordinary Business	8
8	Notices of Motion	8
9	Parks, Sports & Recreation - General Manager's Report	9
10	Proposed classification of French Bay Esplanade Reserve, 52 Valley Road, Titirangi	15
11	Regional Parks Management Plan 2010 Variation to incorporate Te Muri Regional park	23
12	Consideration of Extraordinary Items	
PUBLIC EXCLUDED		
13	Procedural Motion to Exclude the Public	31
C1	Acquisition of Land for Public Open Space, Flat Bush	31
C2	Regional Parks Acquisitions update	31

1 Apologies

Apologies from Cr WB Cashmore, Cr JG Walker, Mayor LCM Brown, Cr ME Lee and Deputy Mayor PA Hulse have been received.

2 Declaration of Interest

Members are reminded of the need to be vigilant to stand aside from decision making when a conflict arises between their role as a member and any private or other external interest they might have.

3 Confirmation of Minutes

That the Parks, Recreation and Sport Committee:

- a) confirm the ordinary minutes of its meeting, held on Tuesday, 12 May 2015, including the confidential section, as a true and correct record.

4 Petitions

At the close of the agenda no requests to present petitions had been received.

5 Public Input

Standing Order 3.21 provides for Public Input. Applications to speak must be made to the Committee Secretary, in writing, no later than **two (2)** working days prior to the meeting and must include the subject matter. The meeting Chairperson has the discretion to decline any application that does not meet the requirements of Standing Orders. A maximum of **thirty (30) minutes** is allocated to the period for public input with **five (5)** minutes speaking time for each speaker.

5.1 Otahuhu Business Association

Purpose

- 1. To address the Committee regarding council services in the Otahuhu town centre area.

Executive Summary

- 2. A powerpoint presentation is attached from the Otahuhu Business Association to demonstrate the issues they are referring to.

Recommendation/s

That the Parks, Recreation and Sport Committee:

- a) receive the presentation and thank the Otahuhu Business Association for their attendance.

Attachments

- A Otahuhu Business Association presentation 35

6 Local Board Input

Standing Order 3.22 provides for Local Board Input. The Chairperson (or nominee of that Chairperson) is entitled to speak for up to **five (5)** minutes during this time. The Chairperson of the Local Board (or nominee of that Chairperson) shall wherever practical, give **two (2)** days notice of their wish to speak. The meeting Chairperson has the discretion to decline any application that does not meet the requirements of Standing Orders.

This right is in addition to the right under Standing Order 3.9.14 to speak to matters on the agenda.

6.1 Waitakere Ranges Local Board : Hunua Ranges herbicide contamination

Purpose

1. A representative from the Waitakere Ranges Local Board will address the Committee regarding the Hunua Ranges herbicide contamination issue.

Recommendation/s

That the Parks, Recreation and Sport Committee:

- a) receive the presentation.

7 Extraordinary Business

Section 46A(7) of the Local Government Official Information and Meetings Act 1987 (as amended) states:

“An item that is not on the agenda for a meeting may be dealt with at that meeting if-

- (a) The local authority by resolution so decides; and
- (b) The presiding member explains at the meeting, at a time when it is open to the public,-
 - (i) The reason why the item is not on the agenda; and
 - (ii) The reason why the discussion of the item cannot be delayed until a subsequent meeting.”

Section 46A(7A) of the Local Government Official Information and Meetings Act 1987 (as amended) states:

“Where an item is not on the agenda for a meeting,-

- (a) That item may be discussed at that meeting if-
 - (i) That item is a minor matter relating to the general business of the local authority; and
 - (ii) the presiding member explains at the beginning of the meeting, at a time when it is open to the public, that the item will be discussed at the meeting; but
- (b) no resolution, decision or recommendation may be made in respect of that item except to refer that item to a subsequent meeting of the local authority for further discussion.”

8 Notices of Motion

At the close of the agenda no requests for notices of motion had been received.

Parks, Sports & Recreation - General Manager's Report

File No.: CP2015/09980

Purpose

1. To update the Committee on activities undertaken by the Department of Parks, Sports and Recreation to support implementation of plans and policies of Auckland Council.

Executive Summary

2. This report has been written to update the Committee across a range of issues and progress with respect to approved work programmes.

Recommendation/s

That the Parks, Recreation and Sport Committee:

- a) receive the update report from the General Manager – Parks, Sports and Recreation.

Comments

Operations Stability – Achievements and Highlights

3. The Outdoor Experience Team within Pool's and Leisure unit gained the Outdoors Mark certification which was recently introduced to improve the quality of processes and systems for adventure activities. The auditors who conducted the certification process were so impressed by the quality of documentation that they have recommended that other organizations our team as a benchmark.
4. Grant Jennings, from our Local & Sports Park Western Office in Henderson, working on behalf of New Zealand's Foreign Affairs Department has led the development of a play space at Sogi Precinct Samoa. The development includes Samoa's first modern children's playground.
5. The West Wave Pool and Leisure Centre recently hosted the 2015 FINA Water Polo World League Women's Intercontinental Tournament at short notice when the previous host county was unable to deliver the event. The team at West Wave worked closely with New Zealand Water Polo to organize and deliver the event which received high praise from the teams and from FINA for the quality of the tournament.
6. Preparatory work is well advanced for the aerial application to around some 17,000 hectares of parkland in the Hunua Ranges. This includes Waharau and Whakatiwai Regional Parks as well as the DOC administered Mangatawhiri Forest Conservation Area and Vining Reserve.
7. Staff are well advanced in ensuring decisions associated with the adoption of the 2015-25 Long Term Plan and Budget are implemented. These include (1) revised service levels with respect to gardens and shrubberies (2) deployment of chemical edging in parks where not already undertaken. In addition community and sporting agencies who had been seeking facility partnership grants have been advised of Council's decision to replace such grants with the Local Board Discretionary Grant program.
8. Te Waka Angamua are leading work on the Maori Sport and Recreation Plan, an action from the Auckland Sport and Recreation Strategic Action Plan. The Parks Recreation and Sport Committee have requested an update on the plan. A representative from Te Waka Angamua will provide a verbal update on the scope of the work programme and progress to date as part of the Manager's report.
9. Staff have supported One Voice, the agency working on behalf of the sport and recreation sector across Auckland, presenting submissions with respect to the Proposed Auckland Unitary Plan. These submissions have dealt with lighting and noise provisions impacting sports parks and playgrounds in particular.

10. The department is working with the Healthy Auckland Together group (representatives from the health sector, not for profit, sport and recreation, Parks, Sports and Recreation department, Auckland Transport and Policy) on joint programmes to improve delivery through improved collaboration. Projects include sharing of research and data for monitoring and evaluation.
11. The Otara Pool and Leisure Centre recently hosted the South Pacific Volleyball Challenge with teams competing from Tahiti, New Caledonia, Australia and Papua New Guinea. The tournament was well supported with over 1,000 spectators in attendance each day.
12. Leisure's Outdoor Experience Team gained the OutdoorsMark certification which was recently introduced to improve the quality of processes and systems for adventure activities. The auditors who conducted the certification process were so impressed by the quality of documentation that they have recommended that other organization use Leisure as a benchmark with some of our staff being asked to provide training and qualified assistance to other companies providing outdoor activities, as they progressed through their OutdoorsMark audit.
13. The Tūpuna Maunga o Tāmaki Makaurau Authority approved the restriction of motor vehicles to the Tihi of Maungawhau. The implementation of these changes will be toward the end of 2015.
14. Dwellings on seven properties purchased by the New Zealand Transport Agency as part of the exchange of parkland for the motorway development near Mt Roskill have been removed. The area is currently being landscaped and will be added to the open space network.
15. Research partnerships continue to be sought at Auckland Botanic Gardens including for Camellia petal blight, meadows, organic gardening and most recently a research trial on kauri dieback with the Bio-Protection Centre at Lincoln University.
16. Researchers are looking into the potential for a soil fungi (Trichoderma) as a biocontrol agent against kauri dieback. A number of diseases that attack different types of crops and plants are suppressed by Trichoderma including PSA in kiwifruit orchards. Trichoderma was collected from healthy kauri trees in the Waitakere ranges, grown up in a lab, and was poured into half of the pots containing kauri seeds at the botanic gardens. Seedling health will be tested after a few months to see whether the presence of Trichoderma means healthier plants (which researchers assume, can fight off diseases better). Another set of plants, also given Trichoderma, will be given kauri dieback in a special containment facility in Lincoln University.
17. The Arataki Visitor Centre is offering a range of events to acknowledge and celebrate Matariki. Events include inspirational talks; ranger led guided walks and a photographic competition where staff are encouraged to share photographs of their special places at work. A planting day has also been arranged based on most suitable dates identified through the Maori calendar.
18. The need to improve the movement of fish through infrastructural obstructions such as culverts has long been identified at a number of locations through the Waitakere Ranges Regional Park. Auckland Council's Storm Water team in collaboration with regional parks are currently undertaking the installation of eight structures to enable fish passage upstream at high priority locations. Each of the locations identified is currently presenting an obstruction to the movement of threatened native species.
19. Preparation of planting sites at Shakespear, Tawharanui, Scandrett and Long Bay Regional Parks has been completed. Plants have been delivered to the parks in preparation for the public planting days over the next three months.
20. Following major storm damage at Long Bay staff from Regional and Specialists Parks, Coastal and Biodiversity have developed a Draft Dune Restoration Plan. This will be a staged restoration and includes areas of open recreation space to provide more scope for dune recovery and erosion buffers.

21. Volunteer planting and clean ups is well underway in many local parks. Community groups that have adopted areas are now busy with clean ups and preparing areas for plantings.
22. Our Parks west team are working with the West Lynn Gardens trustees to improve what is an iconic garden located in the west in New Lynn. The trustees are being provided with help and advice with the maintenance of the garden from the Local Parks team and staff from Council's Community Development Department are supporting the Trustees with marketing and management advice.
23. On 12 May 2015 Local Board Chairs Chambers, Simpson and Haynes presented to the Parks, Recreation and Sport (PRS) Committee and requested that the regional inequity in relation to sports field charges (which only apply in the central area) be reviewed. The PRS Committee asked for an urgent report to the Finance and Performance Committee. The Finance and Performance Committee also requested a report back at their May meeting.
24. In response to this the parks team are reporting to Local Boards in June seeking feedback on future sportsfields fees. A report summarising feedback will be put to the Finance and Performance Committee in August. This report will contemplate options that could affect the 2015 winter season and beyond.
25. Several boards have asked that a price freeze be put in place i.e. fees are not increased by a nominal rate reflective of the consumer price index changes, while this review is undertaken. The June reports to the local boards will provide the opportunity for local boards to make an immediate decision in relation to this point (price freeze) and it will also provide the means for local boards to give their collective feedback to the Governing Body.

Issues/Challenges

24. On the evening of Saturday 16 May, graves in three areas of Papakura Cemetery were damaged and flowers and adornments were removed. The babies and children's area was most affected. Members of the public notified the Council call centre and Police late on Sunday. Specialist cemetery staff focused on contacting families and recording details of the damage. This was a manual process and highlighted the need for a comprehensive Cemetery Records Management system. Staff worked with a group of volunteers spent most of the week tidying the graves and reinstating ornaments. On Monday 25 May there was a blessing on site at the cemetery organised by families, the local board and cemetery staff. The blessing with over 300 people in attendance was led by local kaumatua and church leaders from Papakura. The blessing was attended by his Worship the Mayor, Hon. Judith Collins MP, Councillors and Local Board members. The flowers and adornments that were removed by as yet unknown perpetrator in the incident were compliant with the bylaw and code of practice. Police have identified from CCTV footage that one individual was responsible. Their investigation is ongoing.
25. An analysis of significant injuries suffered by staff indicate most are caused by trips and falls, as well as repetitive strain injuries occurring within Pools and Leisure Team as well as Regional Parks and Cemeteries. We are working with our staff to identify and remove or mitigate causes. Our "working alone" procedures and approaches have recently been reviewed.
26. The Maunga Authority have agreed that the expired lease for the Mt Richmond Bowling Club will not be renewed and the club will need to vacate the premises by 1 December 2015. Staff are proactively working with the club and Auckland Bowls.
27. Waitawa Regional Park slip remediation will start in June. The contractor has completed a site inspection. The Park will be closed during the six week construction period to enable the contractor unfettered access to the site and to ensure visitor health and safety.
28. Discussions are underway with Conservation Volunteers New Zealand Inc. to be involved in the long term on conservation programmes at Atiu Creek Regional Park. A formal agreement is being developed in order to facilitate a range of projects related to pest control, revegetation on the park and establishing a nursery to support the planting programme.

29. The farm lease at Te Muri Regional Park expired at the end of April after a five year period. Park rangers will now be managing the livestock operation and development of the park will be planned in alignment with funding provided within the 2015-25 Long Term Plan.

Projects

30. Work has started on the redevelopment of the Mt Albert Aquatic Centre which will see an upgrade to the pool plant, air ventilation system, replacement of exterior cladding, installation of a new vapor barrier, retiling of the concourse and leisure pool and repainting the interior of the facility. The lap pool is expected to be operational by mid-July with the complete facility reopened by the end of August.
31. The upgrade of the main pool at the Glenfield Pool and Leisure Centre together with the changing rooms is well underway. Works are due for completion in late June. These works include upgrading of heating and ventilation systems, new spa and upgraded changing facilities with dedicated spaces for families.
32. The Sir Owen G Glen National Aquatic Centre was dedicated. The complex which is owned and managed by the AUT Millennium includes an international standard 50m pool together with a 25m pool is scheduled to open in August. Council was a major funding partner (\$13m) and while the centre targets high performance sport, it will also provide 90 hours of public lane swimming each week.
33. The construction of a toilet building at Little Huia was commenced. This will replace the current provision of a single port-a-loo. Little Huia is popular with fishermen as the closest ramp to the Manukau Heads.
34. Construction of stage 1 of the Te Whau Coastal Pathway Stage commenced. This is a project jointly funded by Council and the Whau Coastal Walkway Environmental Trust and involves a 13km joint cycle and walkway from Avondale and New Lynn along the Whau River to Te Atatu. Stage 2 is now being designed in readiness for construction in 2016.
35. New lights have been installed to increase capacity for winter training at Grey Lynn Park and Walker Park. The attached photo shows the spectacular difference these have made at Grey Lynn Park. The lack of light spill from modern lights is also very evident from this photo.



36. A new playground has been installed at Patteson Reserve, Mission Bay.



37. A new sculpture walk, from Shore Road to Wilson's Beach, was completed. This project includes works by local artist Tom Barter.





Consideration

Local Board views and implications

38. There has been no specific engagement with Local Boards in relation to this update report. Programmes and initiatives associated with Local and Sports Parks, together with Pools and Leisure are led by Local Boards. Local Boards are consulted with respect to specific operational aspects of Regional Parks and Cemeteries within their District.

Māori impact statement

39. There has been no specific engagement with Māori in relation to this update report. The report briefly summarises the status of initiatives and projects which are however, on an individual basis, the subject of engagement with Māori.

Implementation

40. No issues.

Attachments

There are no attachments for this report.

Signatories

Author	Ian Maxwell - General Manager Parks, Sports and Recreation
Authoriser	Dean Kimpton - Chief Operating Officer

Proposed classification of French Bay Esplanade Reserve, 52 Valley Road, Titirangi

File No.: CP2015/08919

Purpose

1. To classify French Bay Esplanade Reserve, 52 Valley Road, Titirangi as a recreation reserve pursuant to Section 16 (2A) of the Reserves Act 1977 to enable the lease to Titirangi Volunteer Coastguard Incorporated (the Coastguard) to be executed.

Executive Summary

2. French Bay Esplanade Reserve is made up of the following four parcels of land (the Land):
 - a) Lot 1 on Deposited Plan 31265 and contained in NA797/190 being 278m² is held in fee simple by Auckland Council as an unclassified recreation reserve and is subject to the Reserves Act 1977;
 - b) Area A shown marked on SO 51194 being 2063m² is held in fee simple by Auckland Council as an unclassified recreation reserve by way of Section 3 (1) of the Reserves and Other Lands Disposal Act 1985. No title available;
 - c) Area A shown marked on SO 52374 being 185m² being the land excluding the rock wall and concrete columns supporting the building owned by French Bay Yacht Club is held in fee simple by Auckland Council as an unclassified recreation reserve by way of Section 3 (1) of the Reserves and Other Lands Disposal Act 1985. No title available;
 - d) Area C shown marked on SO 51268 being 39m² is held in fee simple by Auckland Council as an unclassified recreation reserve by way of Section 3 (1) of the Reserves and Other Lands Disposal Act 1985. No title available.
3. With the Land remaining unclassified, the existing Manukau Harbour Foreshore Reserve Management Plan adopted by the former Waitakere City Council in August 2001 has no validity under the Reserves Act.
4. The Land has been administered for many years as a reserve for recreation purposes and the existing reserve management plan supports the reserve being continued to be treated in that way. The Coastguard is contemplated in the plan and its activities are of a recreation nature.
5. On 23 April 2015 the Waitakere Ranges Local Board passed a resolution supporting the classifying of French Bay Esplanade Reserve being Lot 1 on Deposited Plan 31265 and contained in NA797/190, Area A shown marked on SO 51194, Area A shown marked on SO 52374 and Area C shown marked on SO 51268 (Attachment A) as a recreation reserve pursuant to Section 16 (2A) of the Reserves Act 1977 and granting a new community lease to the Coastguard for the portion of the building located on the reserve for a term of 10 years commencing 23 April 2015 with one 10-year right of renewal (Attachment B). The Coastguard owns their building.
6. Section 16 (2A) of the Reserves Act 1977 empowers local councils to declare by resolution reserve lands held in fee simple to be classified for particular purposes as described under that Act. No gazette notice is required and neither are there any requirements for public notification or iwi consultation. Registration of council's resolution again NA797/190 would ensure a permanent public record was retained to record the classification.

Recommendation/s

That the Parks, Recreation and Sport Committee:

- a) resolve, pursuant to Section 16 (2A) of the Reserves Act 1977, to classify French Bay Esplanade Reserve being Lot 1 on Deposited Plan 31265 and contained in NA797/190, Area A shown marked on SO 51194, Area A shown marked on SO 52374 and Area C shown marked on SO 51268 as a recreation reserve.

Comments

7. French Bay Esplanade Reserve is made up of the following four parcels of land (the Land):
 - a) Lot 1 on Deposited Plan 31265 and contained in NA797/190 being 278m² is held in fee simple by Auckland Council as an unclassified recreation reserve and is subject to the Reserves Act 1977;
 - b) Area A shown marked on SO 51194 being 2063m² is held in fee simple by Auckland Council as an unclassified recreation reserve by way of Section 3 (1) of the Reserves and Other Lands Disposal Act 1985. No title available;
 - c) Area A shown marked on SO 52374 being 185m² being the land excluding the rock wall and concrete columns supporting the building owned by French Bay Yacht Club is held in fee simple by Auckland Council as an unclassified recreation reserve by way of Section 3 (1) of the Reserves and Other Lands Disposal Act 1985. No title available;
 - d) Area C shown marked on SO 51268 being 39m² is held in fee simple by Auckland Council as an unclassified recreation reserve by way of Section 3 (1) of the Reserves and Other Lands Disposal Act 1985. No title available.
8. With the Land remaining unclassified, the existing Manukau Harbour Foreshore Reserve Management Plan adopted by the former Waitakere City Council in August 2001 has no validity under the Reserves Act.
9. The Land has been administered for many years as a reserve for recreation purposes and the existing reserve management plan supports the reserve being continued to be treated in that way. The Coastguard is contemplated in the plan and its activities are of a recreation nature.
10. Section 16 (2A) of the Reserves Act 1977 empowers local councils to declare by resolution reserve lands held in fee simple to be classified for particular purposes as described under that Act. No gazette notice is required and neither are there any requirements for public notification or iwi consultation. Registration of council's resolution again NA797/190 would ensure a permanent public record was retained to record the classification.
11. Titirangi Volunteer Coastguard Incorporated formerly known as New Zealand Volunteer Maritime Search and Rescue Service Incorporated has a licence from the legacy The Waitemata City Council for use and occupation of dedicated road known as The Parade, French Bay. The licence commenced on 7 November 1979 and is able to be terminated by either party on giving two months' notice. The Coastguard owns the building known as The Base.
12. The western portion of The Base is located on part of The Parade being unformed legal road. Auckland Transport has confirmed that the licence dated 7 November 1979 for occupation of unformed legal road is valid.
13. The eastern portion of The Base is located on part of French Bay Esplanade Reserve being Lot 1 on Deposited Plan 31265 which is held by Auckland Council. On 23 April 2015 the Waitakere Ranges Local Board passed a resolution supporting the classifying of French Bay Esplanade Reserve being Lot 1 on Deposited Plan 31265 and contained in NA797/190, Area A shown marked on SO 51194, Area A shown marked on SO 52374 and Area C shown marked on SO 51268 (Attachment A) as a recreation reserve pursuant to Section 16 (2A) of the Reserves Act 1977 and granting a new community lease to the Coastguard for the portion of the building located on the reserve for a term of 10 years commencing 23 April 2015 with one 10-year right of renewal (Attachment B). The Coastguard owns their building.
14. The classification of the Land would validate the Manukau Harbour Foreshore Reserve Management Plan and allow for the lease to the Coastguard to be prepared and executed.

Consideration

Local Board views and implications

15. On 23 April 2015 the Waitakere Ranges Local Board resolved to support the classifying of French Bay Esplanade Reserve as a recreation reserve pursuant to Section 16 (2A) of the Reserves Act 1977.

Māori impact statement

16. There are no changes in use or operational activities being conducted on the land.
17. Section 16 (2A) of the Reserves Act 1977 empowers local councils to declare by resolution reserve lands held in fee simple to be classified for particular purposes as described under that Act. No gazette notice is required and neither are there any requirements for public notification or iwi consultation.

Implementation

18. If the Committee resolves to classify the land as recreation reserve this will validate the Manukau Harbour Foreshore Reserve Management Plan and allow the lease to the Coastguard to be executed.
19. The cost implications for Auckland Council associated with the classification process are estimated at \$300.00 for the registration of the resolution against NA797/190.

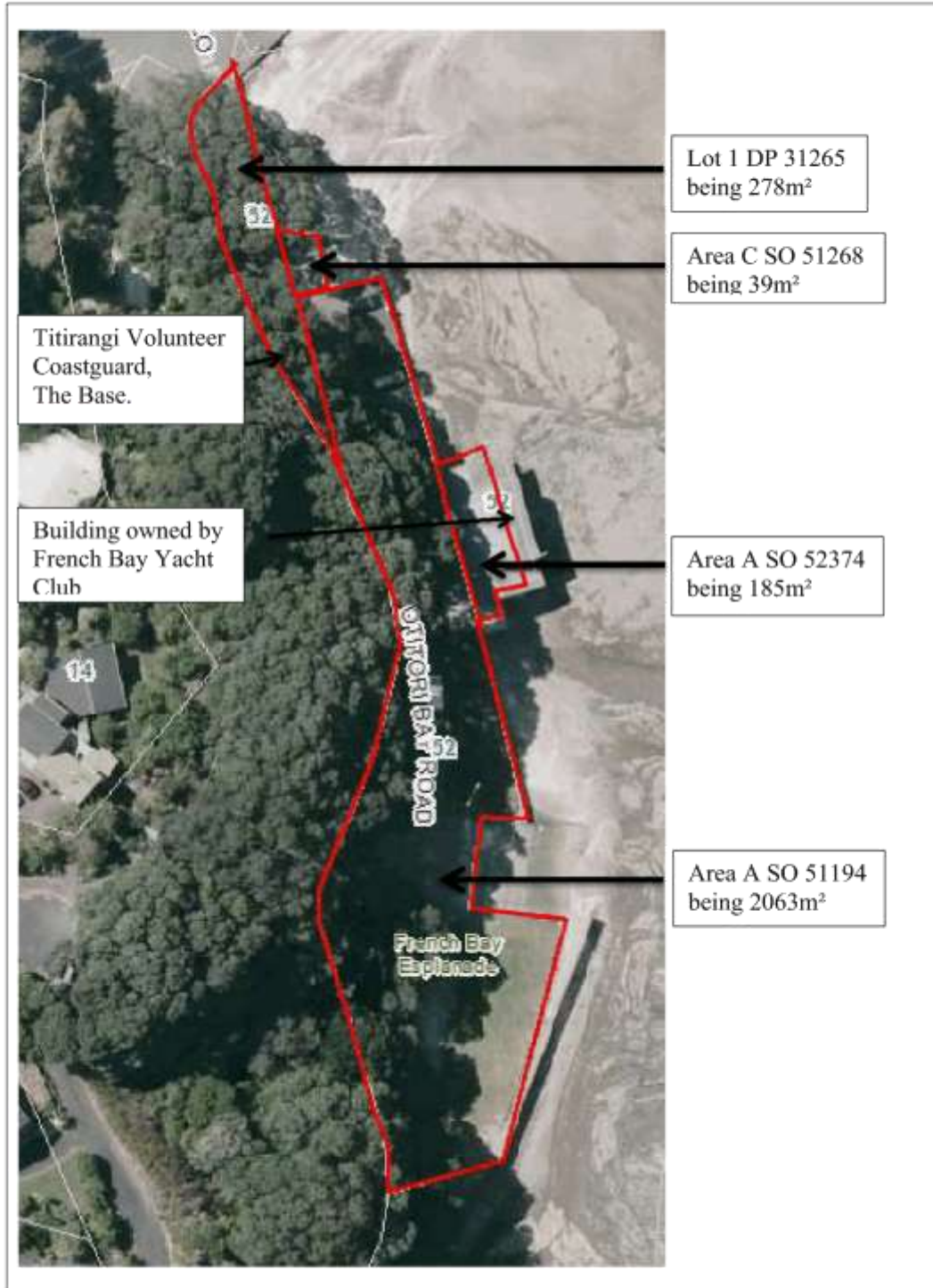
Attachments

No.	Title	Page
A	Land at French Bay Esplanade Reserve, 52 Valley Road, Titirangi requiring classification	19
B	Local Board Resolution WTK/2015/54	21

Signatories

Author	Donna Cooper - Community Lease Advisor
Authorisers	Graham Bodman - Manager - Community Development, Arts and Culture Ian Maxwell - General Manager Parks, Sports and Recreation

Attachment A: Land at French Bay Esplanade Reserve, 52 Valley Road, Titirangi requiring classification



Attachment B: Local Board Resolution WTK/2015/54

New community lease to Titirangi Volunteer Coastguard Incorporated, 52 Valley Road, Titirangi

Resolution number WTK/2015/54

MOVED by Member GB Presland, seconded by Member SR Tollestrup:

That the Waitākere Ranges Local Board:

- a) Supports Lot 1 on Deposited Plan 31265 contained in NA797/190, Area A shown marked on SO 51194, Area A shown marked on SO 52374 and Area C shown marked on SO 51268 to be a recreation reserve pursuant to Section 16 (2A) of the Reserves Act 1977 (Attachment A) and recommends approval by the Parks, Recreation and Sport Committee;
- b) Approves granting a new community lease to Titirangi Volunteer Coastguard Incorporated for part of French Bay Esplanade Reserve, 52 Valley Road, Titirangi, being part of Lot 1 on Deposited Plan 31265 contained in NA797/190 (Attachment B) subject to the following terms and conditions:
 - i) Term – 10 years commencing 23 April 2015 with one 10-year right of renewal;
 - ii) Rent - \$1.00 plus GST per annum if requested;
 - iii) Titirangi Volunteer Coastguard Incorporated Community Outcomes Plan as approved be attached to the lease document (Attachment C);
 - iv) Auckland Council has adopted a Smoke-Free Policy to apply on Council land, which Policy Titirangi Volunteer Coastguard Incorporated is obliged to abide by during the Term. Titirangi Volunteer Coastguard Incorporated will use its best endeavours to ensure its members, employees, invitees, contractors and agents abide by the Policy;
- c) All other terms and conditions in accordance with the Auckland Council Community Occupancy Guidelines 2012.

CARRIED

Regional Parks Management Plan 2010 Variation to incorporate Te Muri Regional park

File No.: CP2015/09817

Purpose

1. To seek approval to initiate a variation of the Regional Parks Management Plan 2010 to incorporate Te Muri Regional Park; and to seek approval to appoint a hearings commissioner to hear submissions and make recommendations.

Executive Summary

2. Council acquired Te Muri Regional Park in October 2010. Since then a number of actions have been undertaken to manage the property as a regional park and transition the farming operation from the grazing licensee to regional parks.
3. To enable the park to be formally opened to the general public and for development of regionally significant recreational opportunities such as trails to occur, it is proposed that council undertake a variation to the Regional Parks Management Plan 2010 to incorporate Te Muri Regional Park.
4. To ensure an integrated open space planning approach it is recommended that the variation covers both Te Muri Regional Park and the adjoining Mahurangi (West) Regional Park. There may also be some minor consequential impacts for Wenderholm Regional Park.
5. The variation would follow the Reserves Act 1977 process with two formal public consultation stages. It is recommended that an independent hearings commissioner be appointed to hear submissions on the draft variation and recommend back to the committee. The committee has the delegated authority to adopt variations to the Regional Parks Management Plan 2010.

Recommendation/s

That the Parks, Recreation and Sport Committee:

- a) approve the initiation of a variation of the Regional Parks Management Plan 2010 to incorporate Te Muri Regional Park
- b) approve the appointment of an independent hearings commissioner to hear submissions on a draft variation and to recommend to the Parks, Recreation and Sport Committee a draft variation to the Regional Parks Management Plan 2010 to incorporate Te Muri Regional Park.

Comments

Regional Parks Management Plan 2010

6. The Regional Parks Management Plan 2010 (RPMP) is the guiding policy framework for how regional parks will be managed by the council. It is a contract with the public that sets out what the council will do and why it has made those management choices. The regional parks network comprises 26 different park locations, representing over 40,000 hectares of land containing significant recreational, historic, cultural and ecological values that are highly valued by the people of Auckland.
7. The RPMP was developed under the Reserves Act 1977 and the Local Government Act 2002 (LGA). Management plans are not mandatory under the LGA; however the regional parks network is a strategic asset for the council and requires that the land be managed in terms of public policy developed in terms of section 83 of the LGA. The Reserves Act requires that management plans be prepared and maintained for land held under that Act. While none of the parkland that is the subject of this proposed variation is held under the Reserves Act, some regional parkland is held under the Reserves Act and the Conservation Act and in the interests of integrated management it is prudent to prepare management plans for these utilising the procedures of the Reserves Act.

8. The RPMP was adopted in September 2010, with a subsequent variation to include Waitawa Regional Park. The RPMP has a vision-horizon of 50 years with an effective life-span of 10 years.

Te Muri Regional Park

9. Te Muri Regional Park (Attachment A), comprising 382.46ha of diverse land use types, ecosystems and cultural and historic heritage sites, was purchased by the council in 2010.
10. It is contiguous with the southern part of Mahurangi West which extends across the Te Muri-o-Tarariki Stream, along Te Muri beach, and includes the coastal headland at the southern end of the beach. Wenderholm Regional Park provides a contiguous open space landscape to the south of the Puhoi River.
11. A pronounced ridgeline runs from Te Muri Beach through the centre of the park on an east-west axis rising to 130m altitude. It offers majestic and expansive views of the Hauraki Gulf, the Puhoi River and Te Muri-o-Tarariki Stream and the coastal landscapes, north and south.
12. The park has considerable potential to:
- protect and enhance ecosystems of high ecological value
 - protect significant heritage sites
 - reconnect Mana Whenua to land they previously occupied
 - implement best practice land management techniques
 - connect existing public open space and landscapes of outstanding value
 - provide a regionally significant destination for both formal and informal outdoor recreational activities - events, mountain biking, horse riding, camping, volunteering and tramping.
13. Since the park was purchased, council has:
- undertaken the Order in Council process to protect the park under the Local Government Act 2002
 - adopted an Interim Management Policy in 2011 in accordance with the RPMP
 - designated the park for regional park purposes under the Auckland Council District Plan, Operative Rodney Section 2011 and the Proposed Auckland Unitary Plan (not operative yet)
 - developed a farm plan (which included an assessment of soils, natural heritage and cultural heritage) and started to implement this through renewing, realigning and extending the fencing network, water supply and power supply
 - initiated a 3 year research project to increase council's understanding of rural land management practices by providing an empirical assessment of their costs and benefits
 - pest animal and plant control, and
 - maintenance of roads, houses, farming infrastructure and other existing assets.
 - Approximately 240ha of the park is grazed by livestock.
 - The land has not yet been formally opened to the public.

Rationale for undertaking the RPMP variation now

14. The reasons for undertaking the RPMP variation now are:
- a desire to formally open the park to the general public, the need to confirm the development required to enable this and to support the desired regional park experiences at this location
 - the need for direction on how to manage strategic assets such as the two houses on Te Muri Regional Park

- c) the need for guidance on the renewals of the two toilet blocks on Mahurangi West and the reconfiguration of the arrival zone at Sullivans Bay which have been budgeted for 2016/17, and
- d) a local group - Mahurangi Action - is keen to progress discussions about a coastal trail through the regional parks.

Scope of the RPMP variation

- 15. To ensure an integrated open space network approach is taken to the management plan process it is proposed that the variation will cover both Te Muri Regional Park and Mahurangi (West) Regional Park. There may also be some minor consequential impacts for Wenderholm Regional Park.
- 16. The planning timeframe is a 50 year vision with a 10 year implementation plan.
- 17. The variation itself will only be to Section 17 Parks Specific Management and the maps of the RPMP and not to the generic policy sections.

Process for the RPMP variation

The table below sets out the key stages and proposed timeframes:

Stage	Timeframe
Collation and commissioning of work necessary to inform the variation	May – August 2015
Mana whenua engagement	Starting June 2015 - ongoing
Public notification of the Intent to Vary the operative RPMP	July 2015
Analysis of submissions and development of a proposed variation to the RPMP	August 2015 – October 2015
Workshops with the Rodney Local Board and the Parks, Recreation and Sports Committee	August 2015
Report to the Rodney Local Board seeking their input on the draft variation	October 2015
Report to the Parks, Recreation and Sports Committee seeking approval to notify the draft variation	November 2015
Public notification of the draft variation to the RPMP	November 2015 – December 2015
Hearings	Early February 2016
Report to the Parks, Recreation and Sports Committee with recommendations on adoption of the draft variation to the RPMP	March 2016
Implementation planning and communication to key stakeholders	April 2016

- 18. It is proposed that a workshop be held with the committee following the first public notification to seek direction on key issues. Following that, the draft variation would be reported to the committee for endorsement prior to being publicly notified.
- 19. It is recommended that an independent commissioner be appointed to hear submissions when the draft variation is notified and to recommend back to the Parks, Recreation and Sport Committee a draft variation for consideration and adoption. Support from the committee for this approach is being sought at this early stage to enable the appointment process to be progressed during the drafting stage to assist with a timely hearings process following public feedback on the notified draft variation.

Consideration

Local Board views and implications

20. The Rodney Local Board Chair Brenda Steele has been briefed on the project. A formal report will be taken to the local board setting out the scope and process for the variation in June. Following that a workshop will be held with the local board to seek their input at the drafting stage. Once the draft variation is completed, it will be reported to the local board to seek their input prior to it being reported to the committee for endorsement for public notification.

Māori impact statement

21. A hui is being organised with mana whenua in June to inform them of the project prior to the public notification process and to seek their guidance on how they want to be involved in the review.

Implementation

22. If the project is supported by the committee, council will initiate the project in accordance with the timeframes set out above. The costs of the variation will be met by the existing Regional Parks operational budgets.
23. There is no specific budget tagged to the development of Te Muri Regional Park in the Long-term Plan 2015-2025, however there are funds of \$1M per annum for the development of new regional parkland which can be used to support the implementation of the variation once adopted.

Attachments

No.	Title	Page
A	Map of Te Muri Regional Park	27
B	Map of wider open space network	29

Signatories

Author	Anna McElrea - Senior Parks and Recreation Advisor
Authorisers	Mace Ward - Group Manager Regional and Specialist Parks Ian Maxwell - General Manager Parks, Sports and Recreation

Attachment A Map of Te Muri Regional Park



Attachment B Map of wider open space network



Exclusion of the Public: Local Government Official Information and Meetings Act 1987

That the Parks, Recreation and Sport Committee:

- a) exclude the public from the following part(s) of the proceedings of this meeting.

The general subject of each matter to be considered while the public is excluded, the reason for passing this resolution in relation to each matter, and the specific grounds under section 48(1) of the Local Government Official Information and Meetings Act 1987 for the passing of this resolution follows.

This resolution is made in reliance on section 48(1)(a) of the Local Government Official Information and Meetings Act 1987 and the particular interest or interests protected by section 6 or section 7 of that Act which would be prejudiced by the holding of the whole or relevant part of the proceedings of the meeting in public, as follows:

C1 Acquisition of Land for Public Open Space, Flat Bush

Reason for passing this resolution in relation to each matter	Particular interest(s) protected (where applicable)	Ground(s) under section 48(1) for the passing of this resolution
The public conduct of the part of the meeting would be likely to result in the disclosure of information for which good reason for withholding exists under section 7.	s7(2)(i) - The withholding of the information is necessary to enable the local authority to carry on, without prejudice or disadvantage, negotiations (including commercial and industrial negotiations). In particular, the report contains confidential information which may affect the purchase negotiations..	s48(1)(a) The public conduct of the part of the meeting would be likely to result in the disclosure of information for which good reason for withholding exists under section 7.

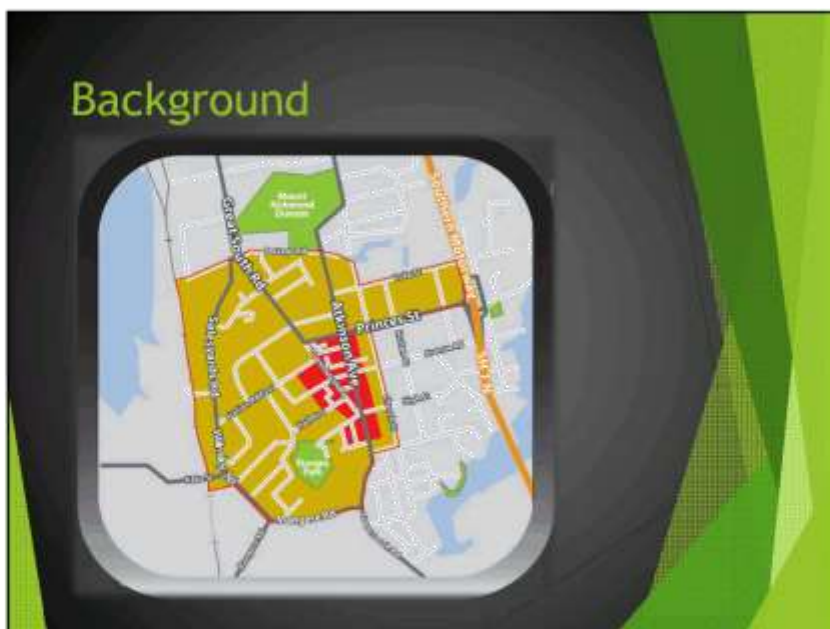
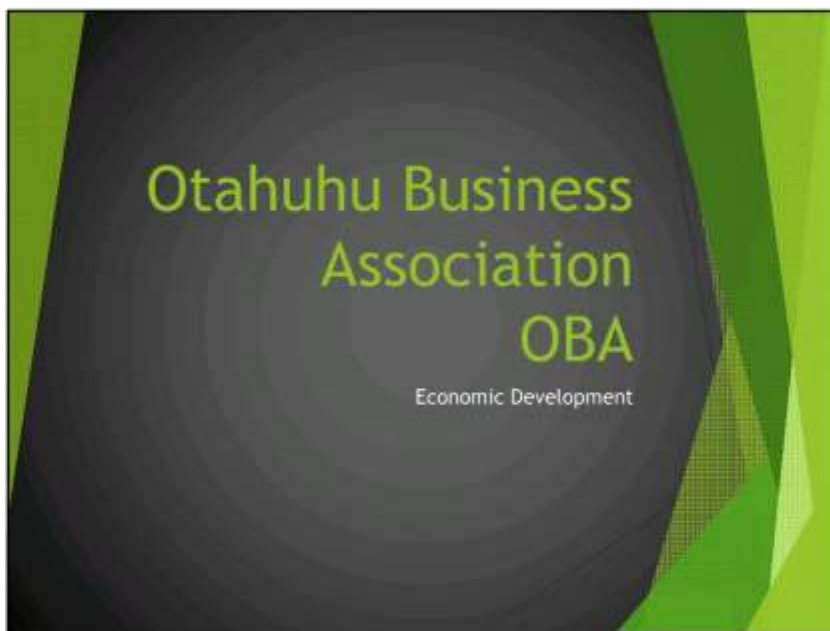
C2 Regional Parks Acquisitions update

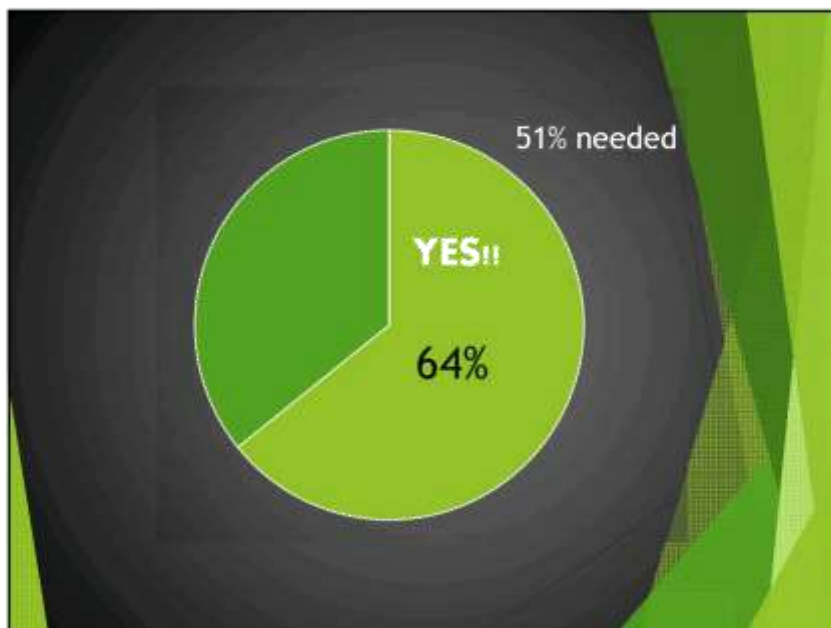
Reason for passing this resolution in relation to each matter	Particular interest(s) protected (where applicable)	Ground(s) under section 48(1) for the passing of this resolution
The public conduct of the part of the meeting would be likely to result in the disclosure of information for which good reason for withholding exists under section 7.	s7(2)(i) - The withholding of the information is necessary to enable the local authority to carry on, without prejudice or disadvantage, negotiations (including commercial and industrial negotiations). In particular, the report contains confidential information which may affect purchase negotiations.	s48(1)(a) The public conduct of the part of the meeting would be likely to result in the disclosure of information for which good reason for withholding exists under section 7.

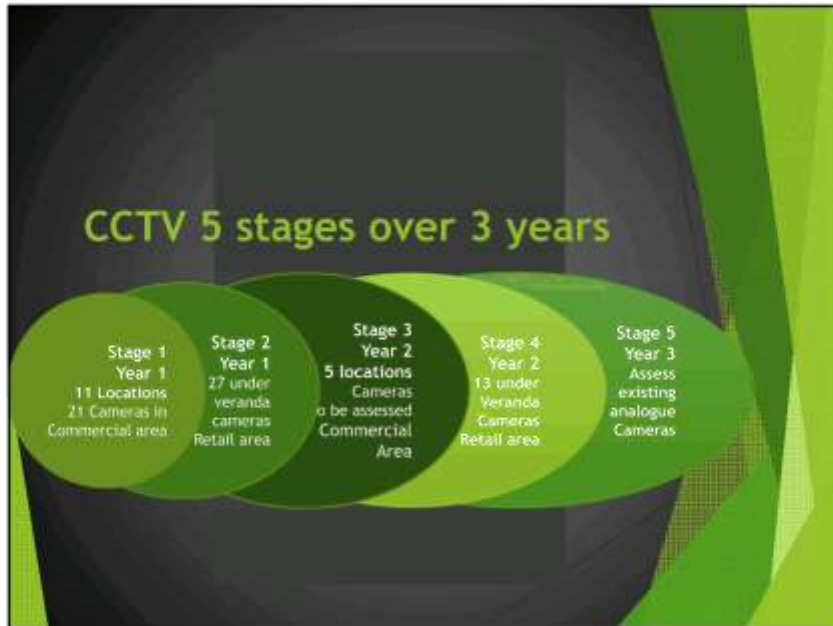
ATTACHMENTS

Item 5.1 Attachment A Otahuhu Business Association
presentation

Page 35







Item 5.1

Attachment A








06 JUN 2015 18:07:00

- Palm trees no longer maintained
- Too large and exceed the budget
- Not allowed to be removed



- Otahuhu only has one public toilet



Item 5.1

Attachment A

