



Date: Wednesday 12 August 2015
Time: 6.00pm
Meeting Room: Board Room
Venue: Auckland Town Hall
Ground Floor
301-305 Queen Street
Auckland

Ethnic Peoples Advisory Panel

OPEN MINUTE ITEM ATTACHMENTS

ITEM	TABLE OF CONTENTS	PAGE
5	Empowered Communities Approach	
A.	Ethnic Peoples Advisory Panel 12 August 2015, item 4: Empowered Communities Approach	3



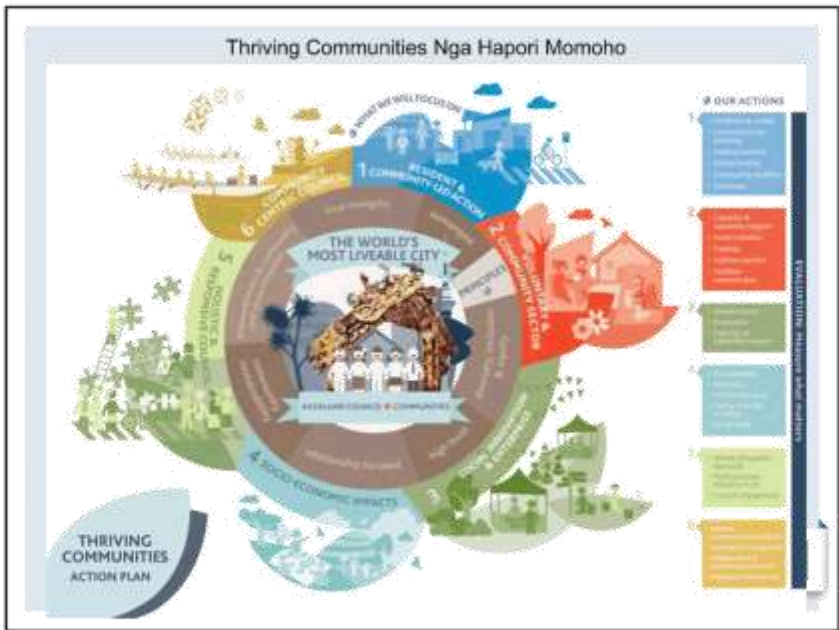
What's driving the change?

Mayoral LTP Proposal

"Develop a more empowered communities approach to the work of Auckland Council"

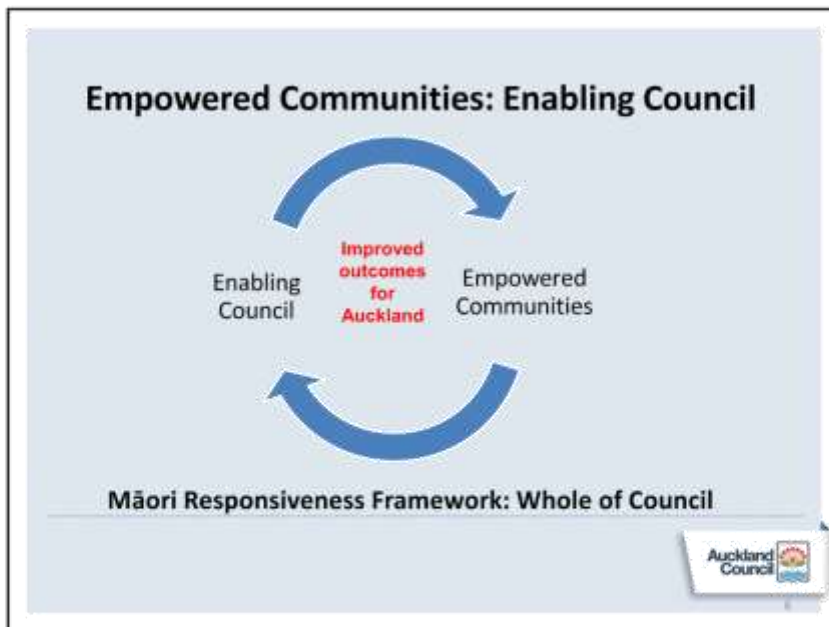
Thriving Communities

He Hapori Momoho



What is an empowered community?

An empowered community is one where individuals, whanau and communities have the power and ability to influence decisions, take action and make change happen in their lives and communities. This includes communities of place, interest and identity.



What council will do and enabling ways of working

	What council will do	Enabling ways of working	
Cultural change	Reprioritise investment	Act on and enable Council's partnership with Māori	Cultural change
	Share more control, accountability, responsibility	Remove barriers and reduce bureaucracy	
	Recognise the role and authority of mana whenua within their rohe, and the role of mataawaka and their aspirations for community empowerment	Work in more joined up and integrated ways	
	Strengthen opportunities for local communities to shape decision-making and set the agenda	Develop more flexible and creative responses	
	Support more locally designed and delivered initiatives	Be innovative, take risks and learn through experience	
	Actively support and enable marae as community hubs for reaching out and empowering Māori communities	Communicate well	
	Support community aspirations through community-led planning and place making	Cultivate and embed enabling attitudes	
	Increase community capacity and capability building	Consistent approach and behaviour across council	

Applied to the Community Development and Safety unit (CDAC)



What this means for the CDS Unit

- Unit being restructured
- Operating model - two components:
 - i. Local Strategic Brokers
 - ii. Community Practice Hub
- Some savings will be realised

