

Date: Thursday 26 November 2015
Time: 6.30pm
Meeting Room: Waitakere Ranges Local Board Office
Venue: 39 Glenmall Place
Glen Eden

Waitākere Ranges Local Board OPEN MINUTE ITEM ATTACHMENTS

ITEM	TABLE OF CONTENTS	PAGE
12	Request for landowner approval - event applications	
	A. The Ultimate Waterman - Mobile HQ presentation	3



MOBILE HQ

12th March - 20th March 2016

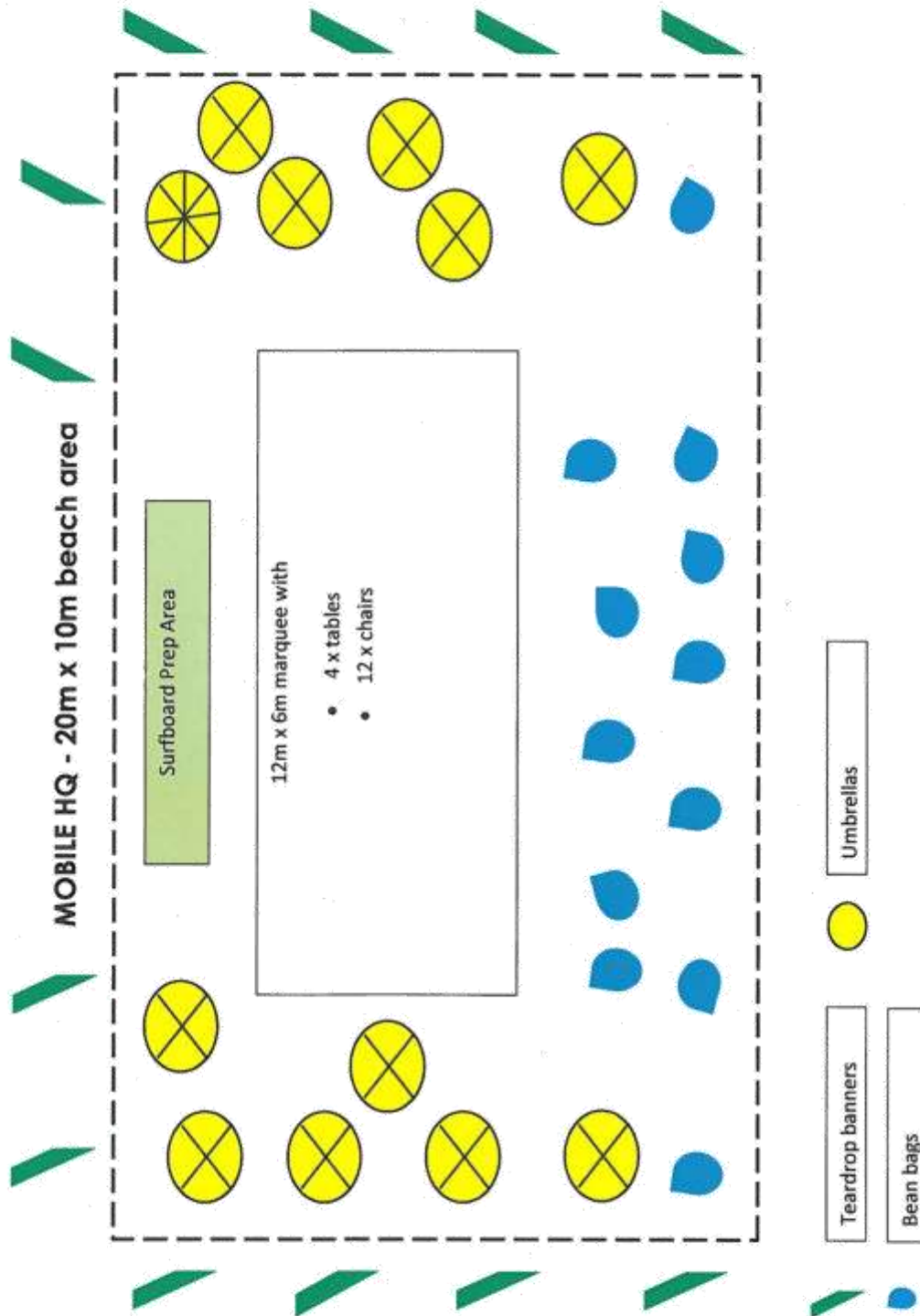


Mobile HQ

TUW will travel with a mobile

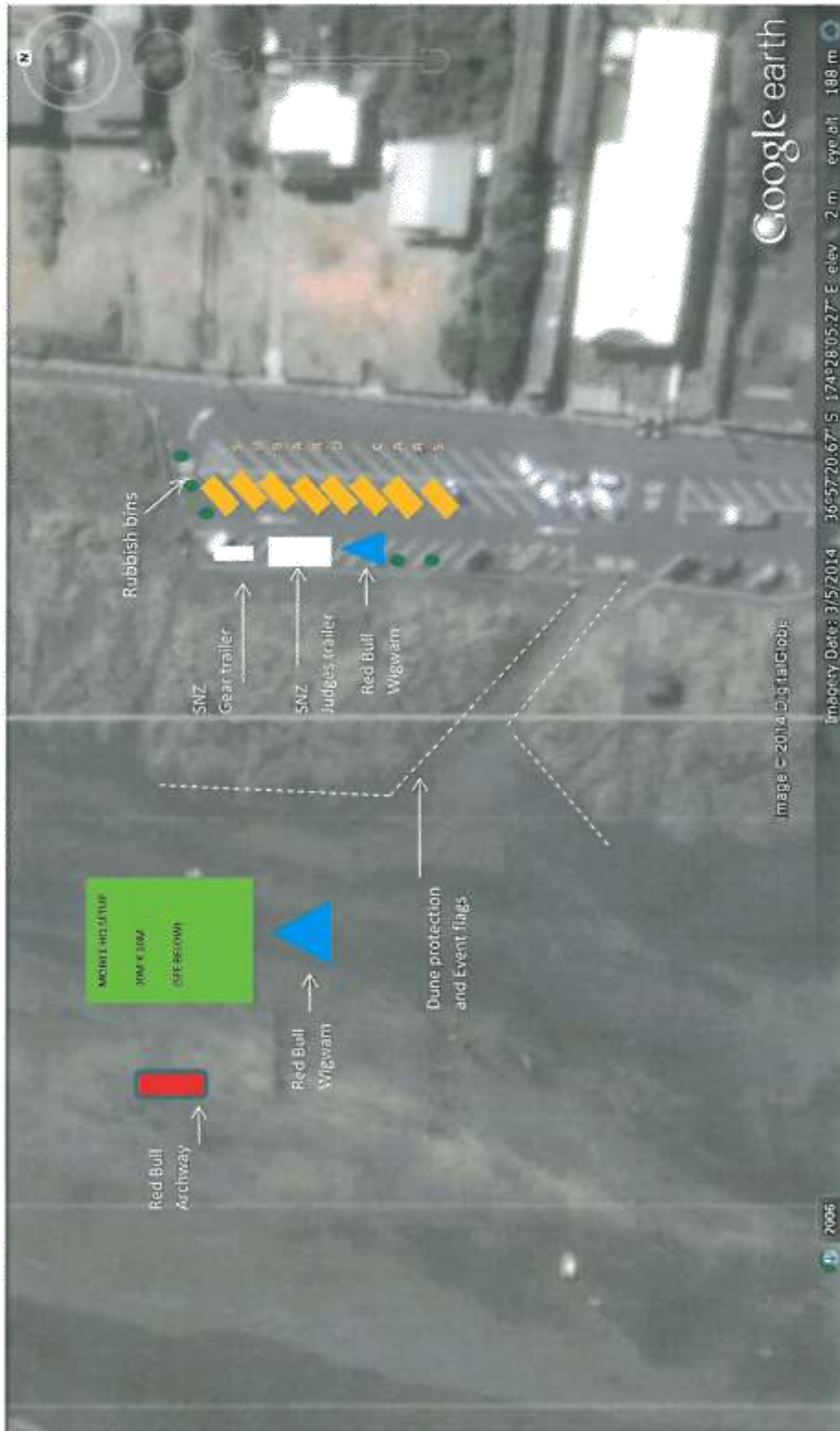
It is made up of the following:

- 1 central popup tent (12m x 6m)
- 12 beach umbrellas,
- 12 teardrop banners
- 12 beanbags
- 12 chairs
- 4 tables
- 20m low-level fencing (crowd-control barriers) to mark off the mobile hub area
- Audio for announcements





PIHA setup





INFRASTRUCTURE INVENTORY

On Beach

- 1 x Mobile HQ (see above)
- 1 x inflatable archway with small generator
- 1 x Red Bull Wigwam – 9m x 9m
- Dune Protection Barriers and 20 x Event Flags

Car Park

- 1 x Judges Trailer – 6m long x 2.5m wide
- 1 x equipment trailer – 5m long x 2m wide