

STORM WATER
LINE 2 OUTLET

AUCKLAND COUNCIL
This plan shall be read as part of
Resource Consent No. 48165
Sheet: 75 of 92

STORMWATER
LINE 1 OUTLET

ISSUED FOR APPROVAL



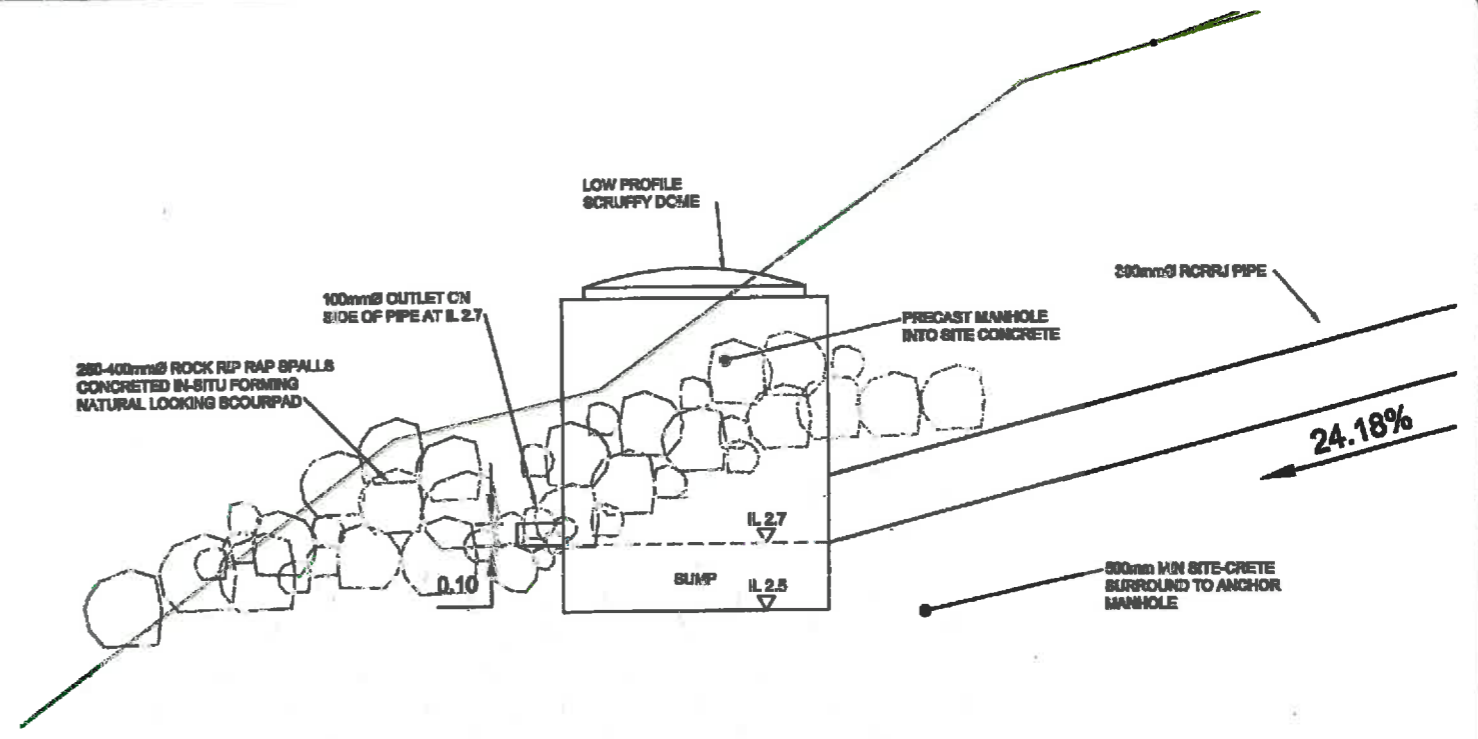
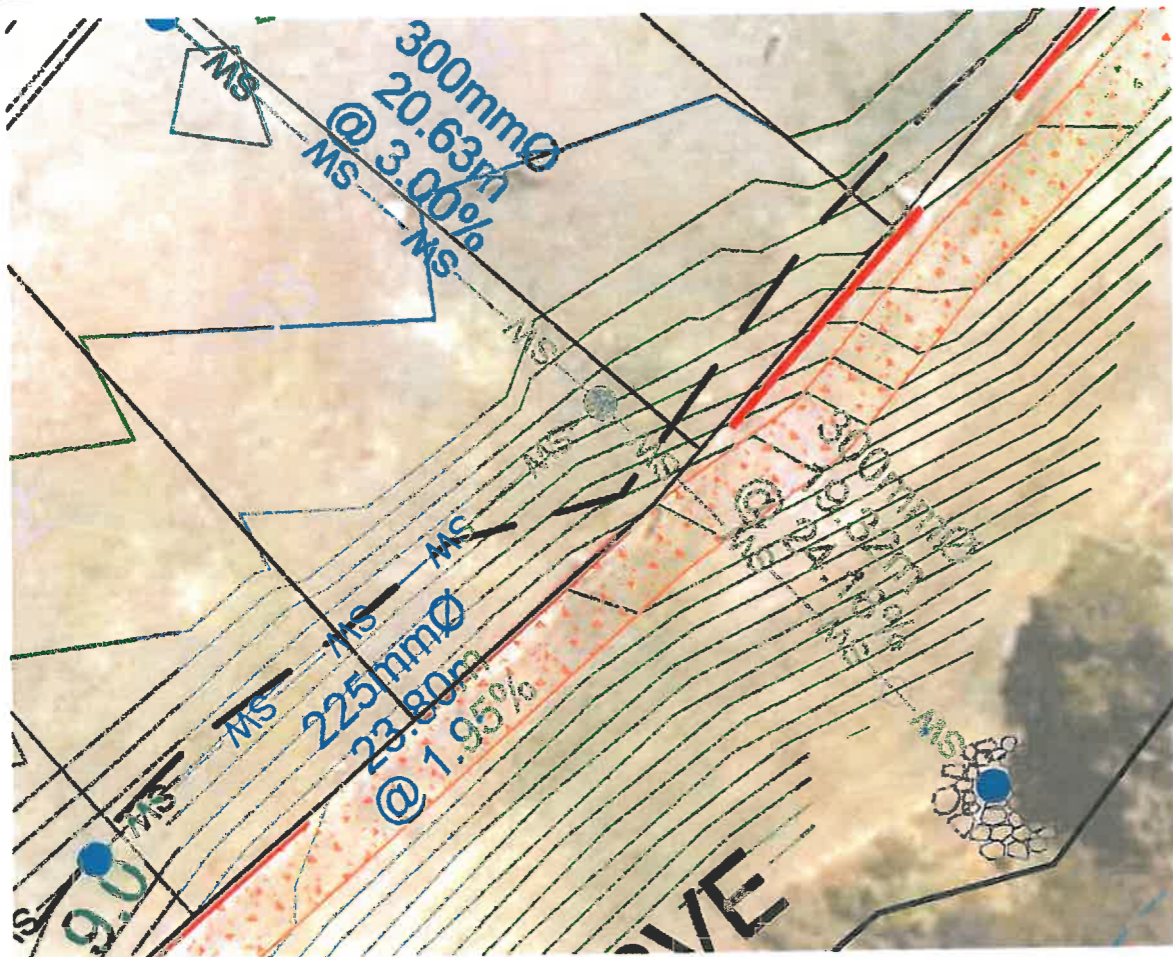
REV	DESCRIPTION	APPR'D	DATE
A	UPDATED FOR S92	JFG	07-04-16



PROJECT
**198 MAHIA ROAD, MANUREWA
STORMWATER OUTLETS
PLAN VIEW**

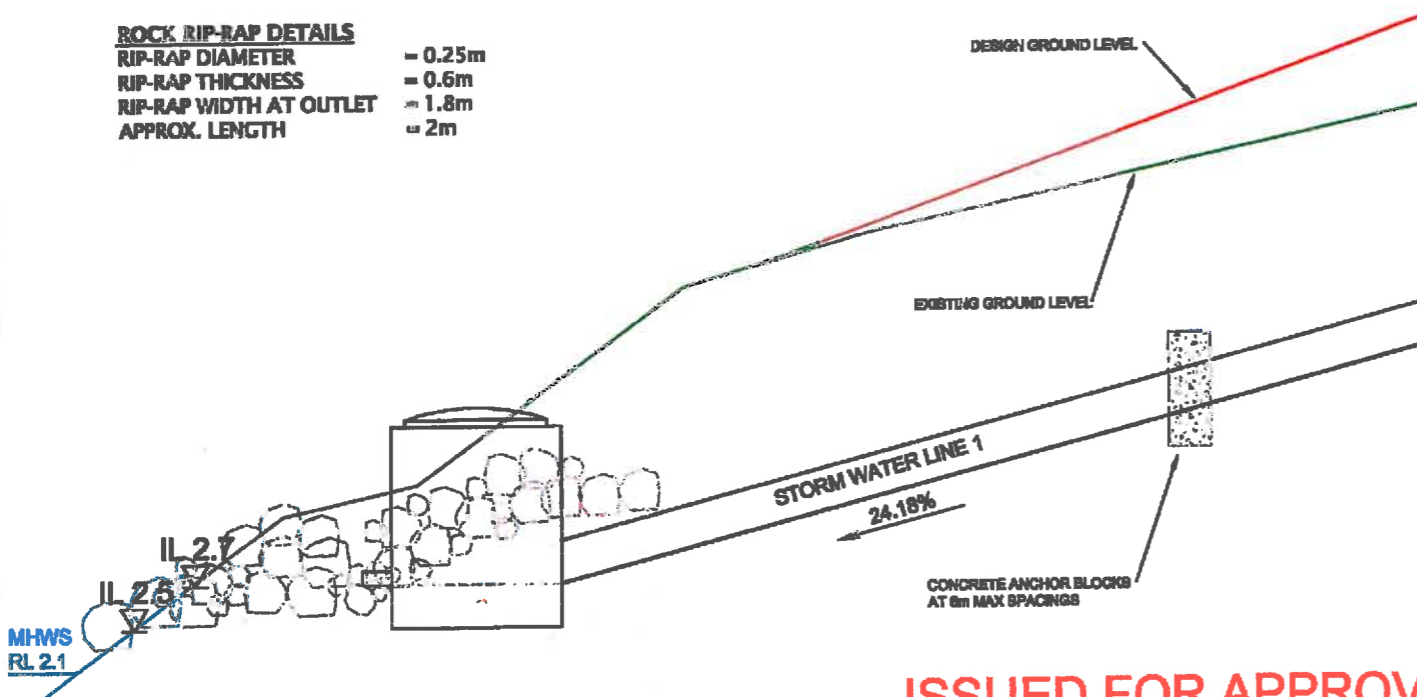
CLIENT
MAHIA VILLAGE LIMITED

DESIGN	RWS	SCALE	DATE ISSUED
DRAWN	RWS	1:400 @ A3	APRIL 2016
CHECK	AS		
APPVD	JFG		
PROJECT NO	DRAWING NO	REVISION	
1142	DR900	(A)	

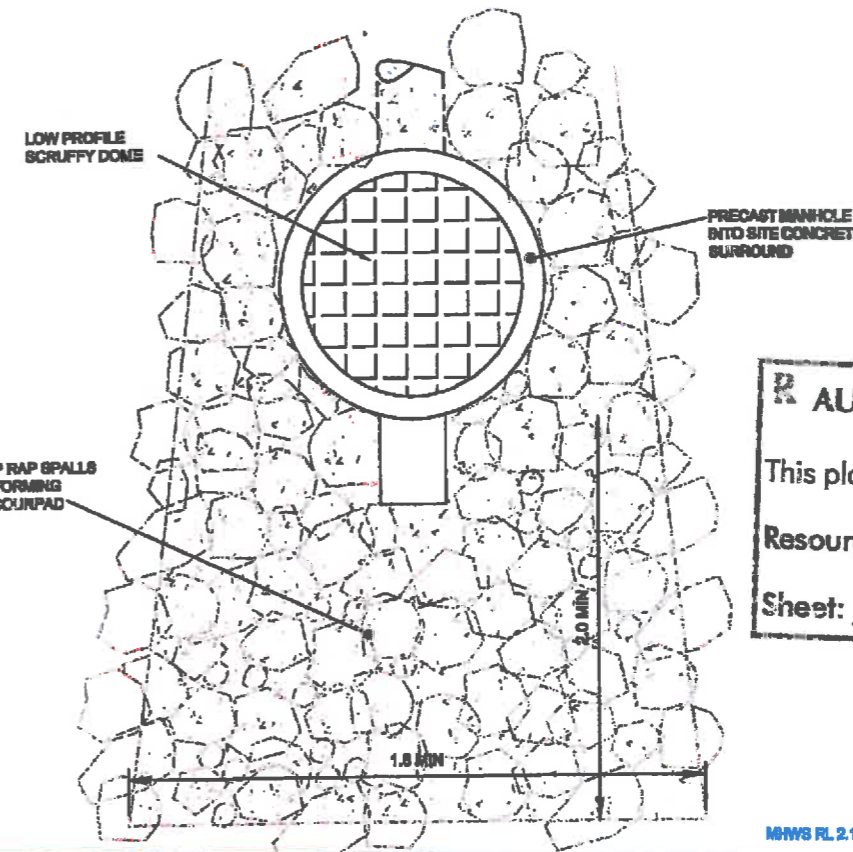


SW LINE 1 OUTLET STRUCTURE
SCALE 1:NTS @ A3

- ROCK RIP-RAP DETAILS**
- RIP-RAP DIAMETER = 0.25m
 - RIP-RAP THICKNESS = 0.6m
 - RIP-RAP WIDTH AT OUTLET = 1.8m
 - APPROX. LENGTH = 2m



ISSUED FOR APPROVAL



AUCKLAND COUNCIL

This plan shall be read as part of
Resource Consent No: 48165
Sheet: 77 of 92

REV	DESCRIPTION	APPR'D	DATE
A	INCLUSION OF ANCHOR BLOCKS	JFG	12-10-16
B	UPDATED FOR 692	JFG	07-04-16

Candor³
ENGINEERING FOR LIFE

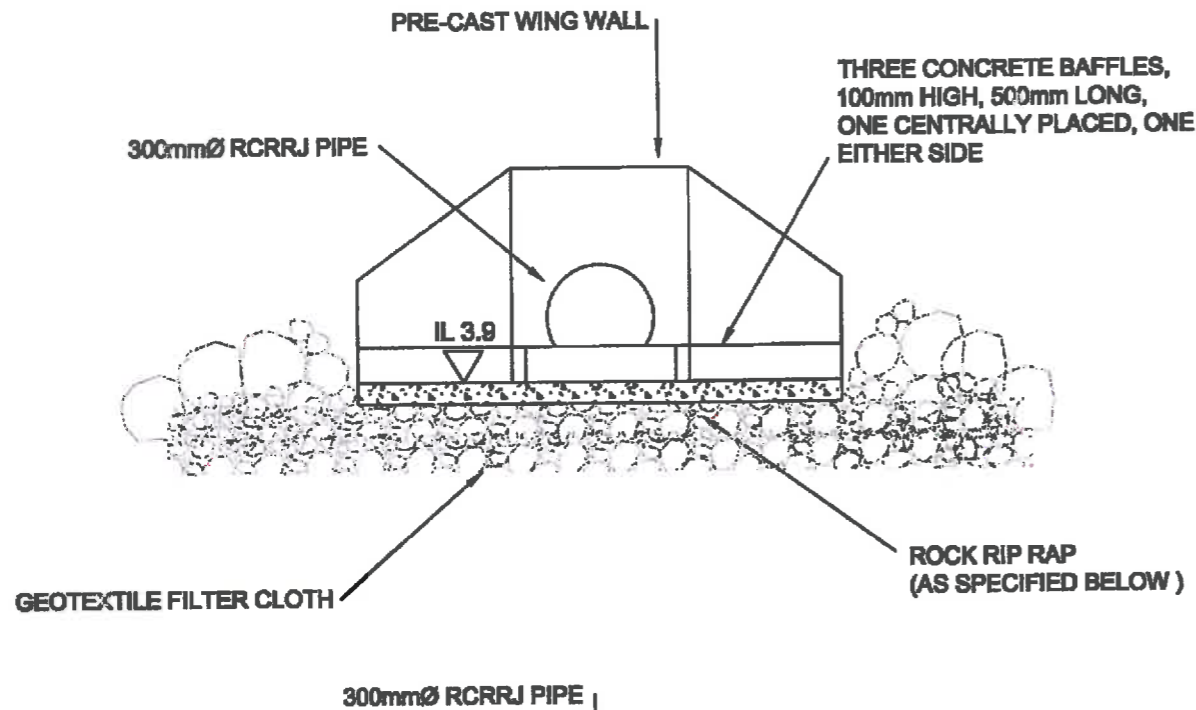
PROJECT
198 MAHIA ROAD, MANUREWA
SW LINE 1 OUTLET
CROSS SECTION DETAILS

CLIENT
MAHIA VILLAGE LIMITED

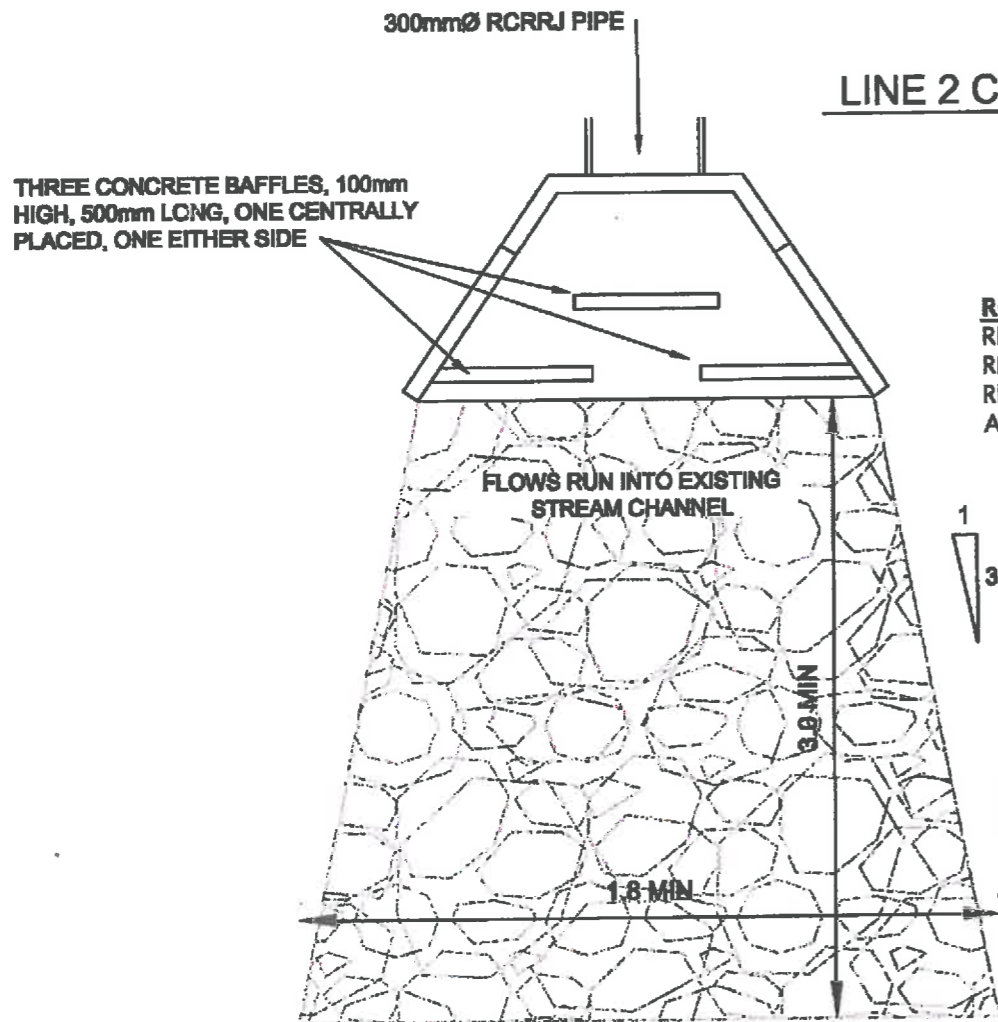
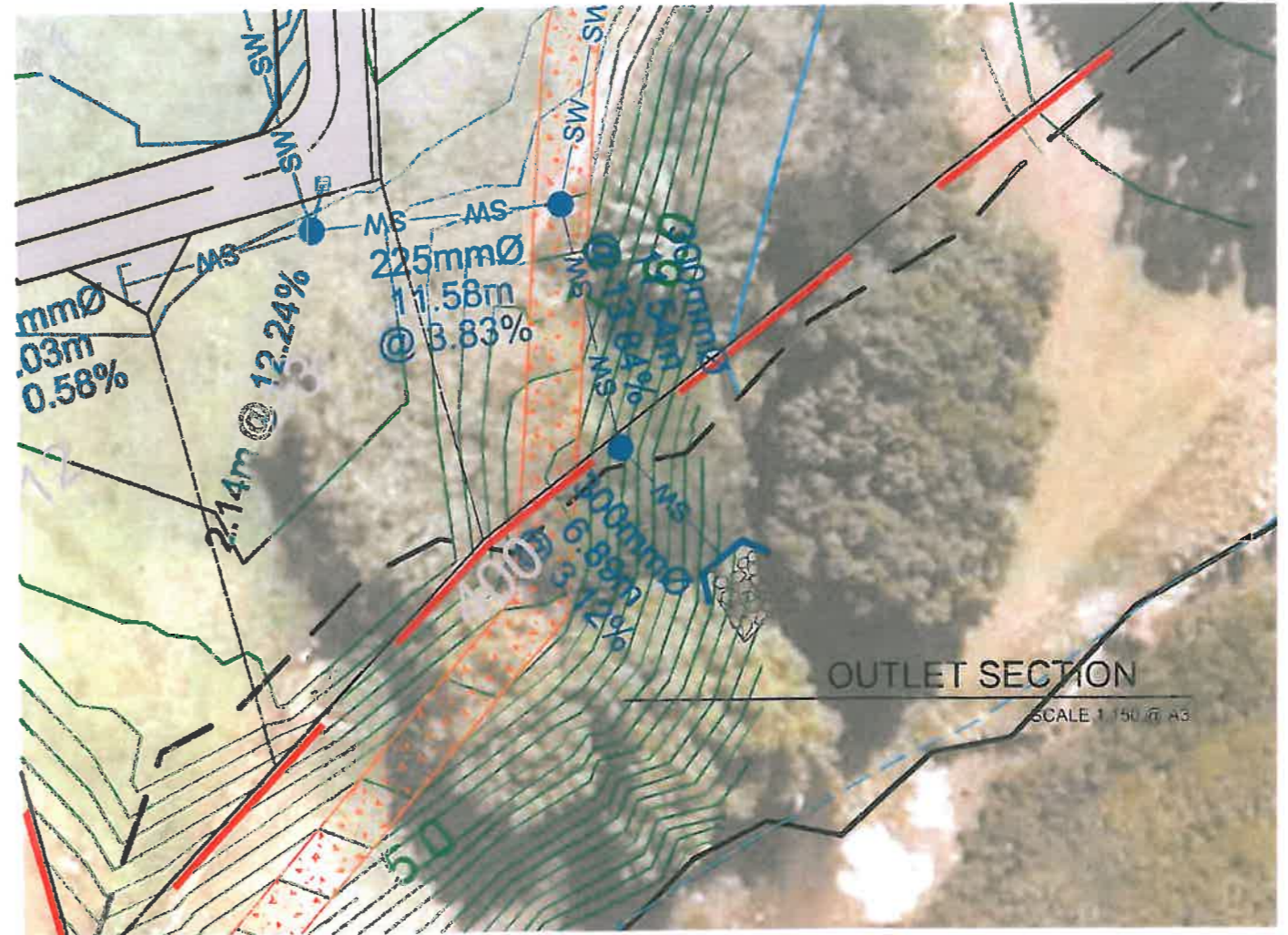
DESIGN	RWS	SCALE	DATE ISSUED
DRAWN	RWS	1:25 @ A3	APRIL 2016
CHECK	AS		
APP'D	JFG		

PROJECT NO	DRAWING NO	REVISION
1142	DR902	(B)

ISSUED FOR APPROVAL



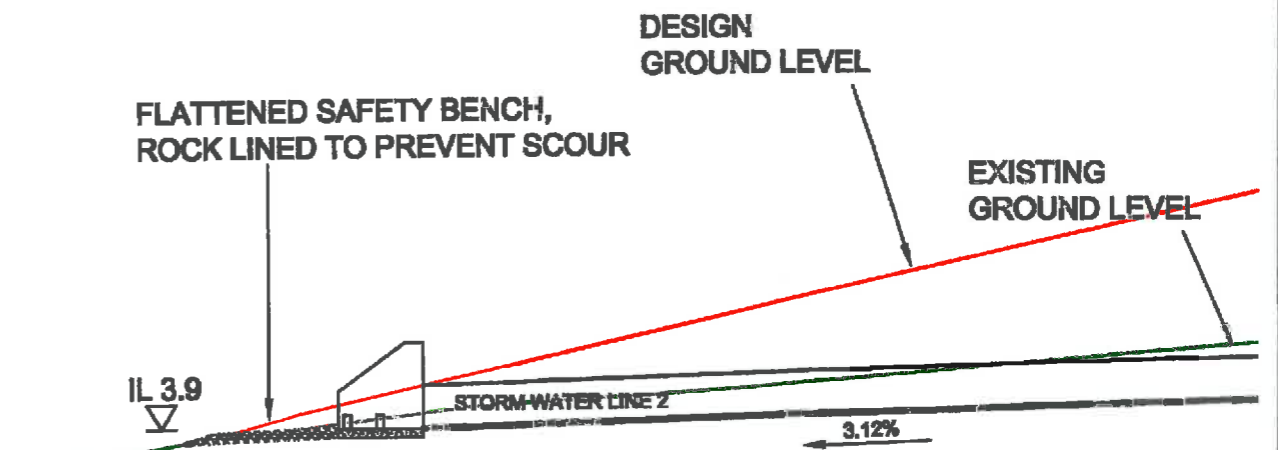
LINE 2 CULVERT DETAILS
SCALE 1:NTS@ A3



- ROCK RIP-RAP DETAILS**
- RIP-RAP DIAMETER = 0.25m
 - RIP-RAP THICKNESS = 0.44m
 - RIP-RAP WIDTH AT OUTLET = 1.8m
 - APPROX. LENGTH = 3.0m

AUCKLAND COUNCIL

This plan shall be read as part of
Resource Consent No: 48165
Sheet: 76 of 92



LINE 2 OUTLET DETAILS
SCALE 1:100@ A3

REV	DESCRIPTION	APPR'D	DATE
A	UPDATED FOR S92	JFG	07-04-16



PROJECT
**198 MAHIA ROAD, MANUREWA
SW LINE 2 OUTLET
CROSS SECTION DETAILS**

CLIENT
MAHIA VILLAGE LIMITED

DESIGN PWS	SCALE NTS	DATE ISSUED
DRAWN RWS		APRIL 2016
CHECK AS		
APPVD JFG		
PROJECT NO 1142	DRAWING NO DR901	REVISION (A)