

**Date:** Thursday 16 February 2017  
**Time:** 6.00pm  
**Meeting Room:** Manurewa Local Board Office  
**Venue:** 7 Hill Road  
Manurewa

---

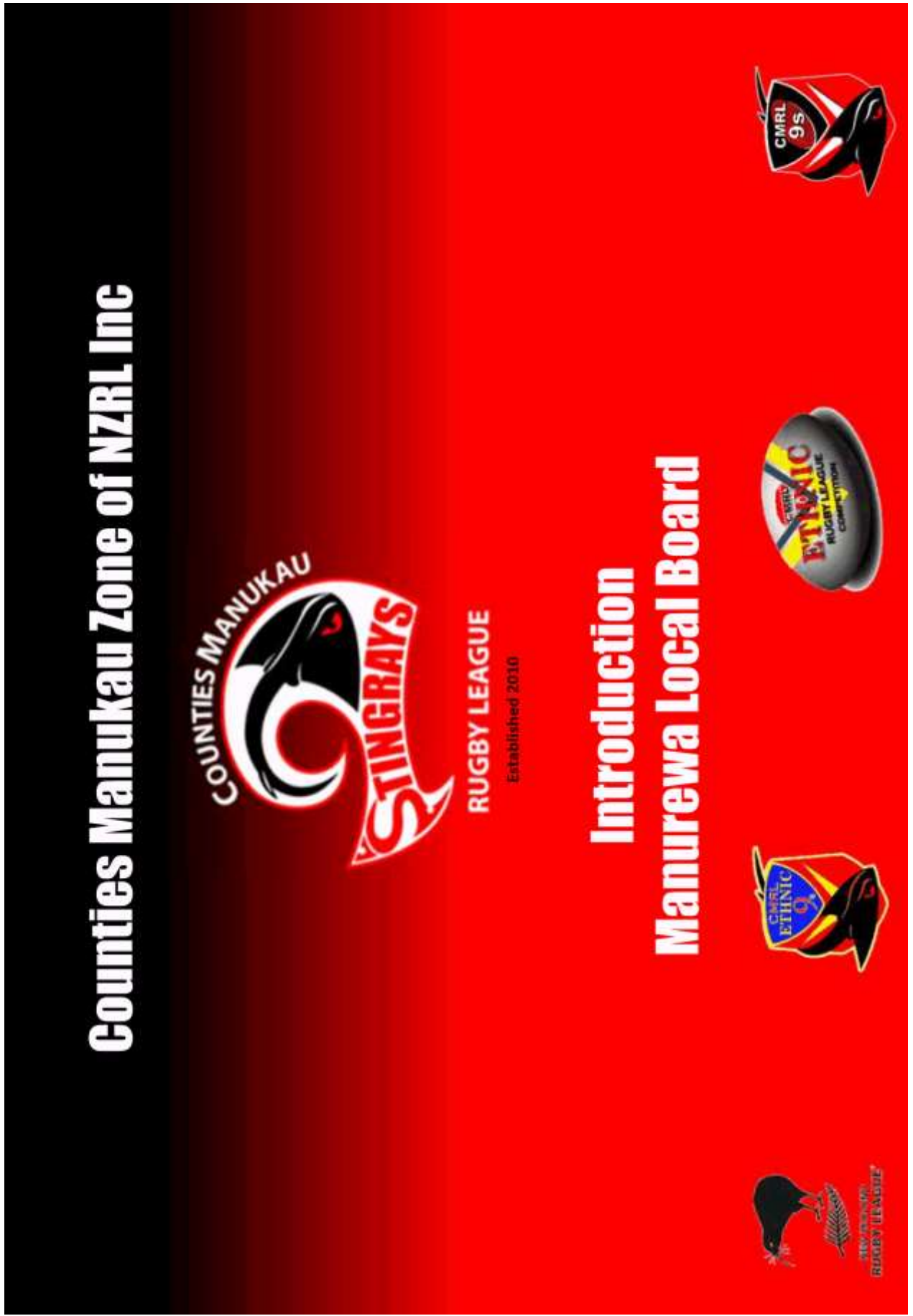
## **Manurewa Local Board**

# **OPEN MINUTE ITEM ATTACHMENTS**

---

<b>ITEM</b>	<b>TABLE OF CONTENTS</b>	<b>PAGE</b>
<b>8.1</b>	<b>Deputation - Counties Manukau Zone of New Zealand Rugby League Inc - Kasey King</b>	
A.	Counties Manukau Zone of NZRL Inc presentation	3





**Counties Manukau Zone of NZRL Inc**

**COUNTIES MANUKAU**  
**STINGRAYS**

**RUGBY LEAGUE**  
Established 2010

**Introduction**  
**Manurewa Local Board**

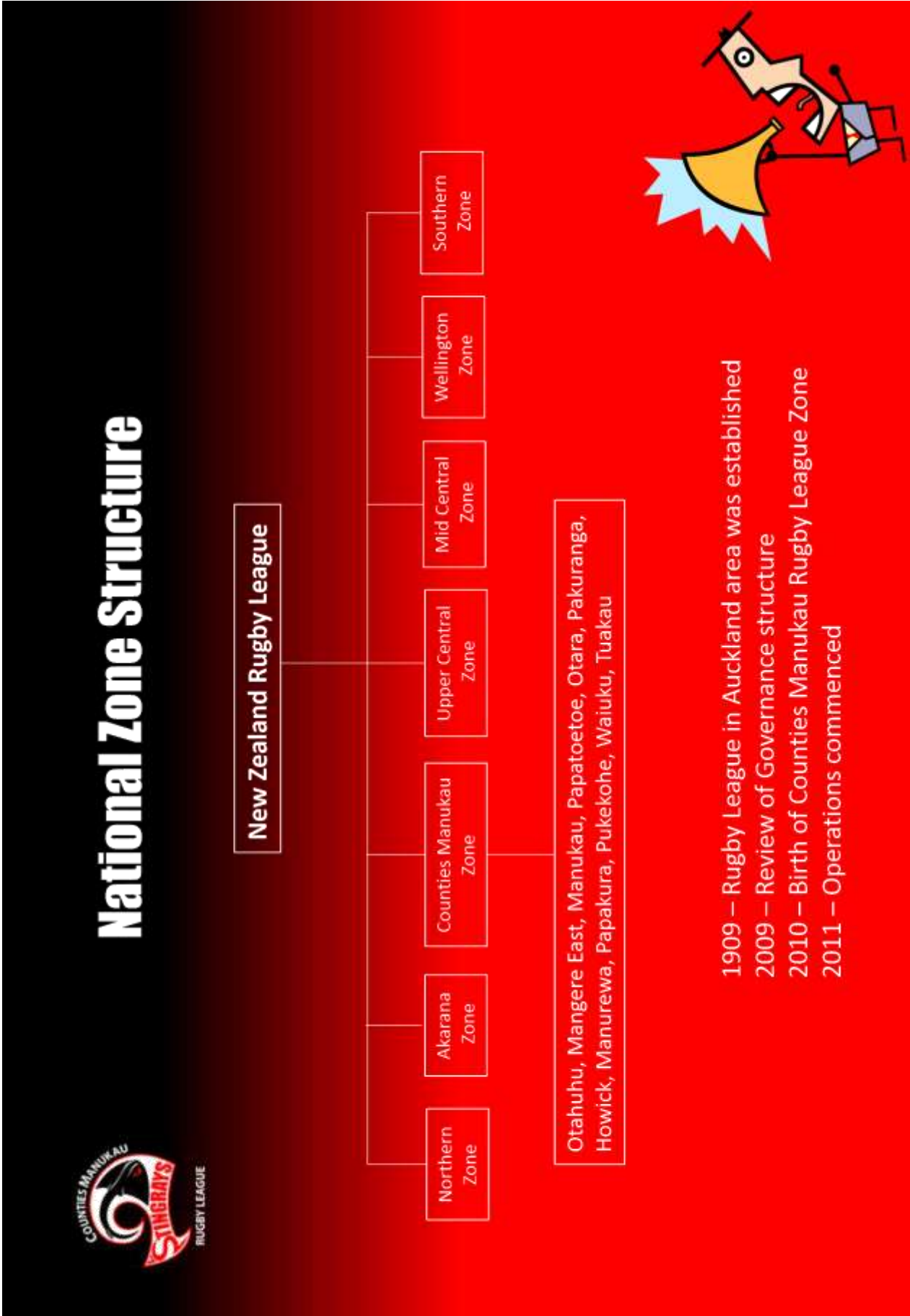
**NZRL RUGBY LEAGUE**

**CMRL ETHNIC RUGBY LEAGUE COMPETITION**

**CMRL 9s**

Item 8.1

Attachment A





# Our MISSION

## “ build stronger communities through Rugby League ”

- Promoting Rugby League as the sport of choice
- Creating a fun, safe environment for all ages
- Offering opportunities for people to become actively involved at every level
- Using Rugby League as a catalyse to create social change
- Helping our club members and supporters become positive contributors to community life
- Assisting players and officials realise the dream of a career in Rugby League





**VALUES** (PICK Rugby League)

Our sport and actions are based around core values

- Pride**: In ourselves and our heritage
- Integrity**: Integrity in everything we do
- Courage**: We will have the courage to do the right thing.
- Respect**: Earning and giving respect
- Leadership**: Leadership from the top down, will make us winners from the ground up

COUNTIES MANUKAU  
STINGHAYS  
RUGBY LEAGUE



# Local Schools Involved In Rugby League

## PRIMARY

Finlayson Park  
Leabank  
Manurewa South  
Manurewa West  
Randwick Park  
Roscommon  
Rowandale  
Weymouth  
Wiri central  
The Gardens

## INTERMEDIATE

Manurewa  
Waimahia  
Green Meadows  
Finlayson  
The Gardens

## SECONDARY

Manurewa  
James Cook  
Alfriston

## CLUBS

Manurewa Marlins





# Registered Participation



**Club**

20 weeks competition, Coaching courses, Governance Workshops,

**Players**

- 240 - Aged 5 – 8 years
- 255 - Aged 9 – 12 years
- 200 - Aged 13 – 17
- 175 - Aged 18+

**Officials**

200



**1070 TOTAL** (excluding Netball membership)

We have approximately 8000 Rugby League participants across the Zone (Otahuhu – Tuakau)

**Manurewa Marlins is one of the largest rugby league clubs in the country**



# Community Participation (Finlayson Park)



**Our Events**  
School Tournaments, Competitions, Skills training, Have A Go days, Holiday Programmes, Coaching courses

School Tournament Participation

- 288 – Primary
- 225 - Intermediate
- 60 – Secondary

100 – Skills training

400 – Have A Go Day

200 – Holiday Programmes

220 – Volunteers Up skilling courses

**1493 TOTAL**



2563 Combined Totals of Participation with more than one experience per participant

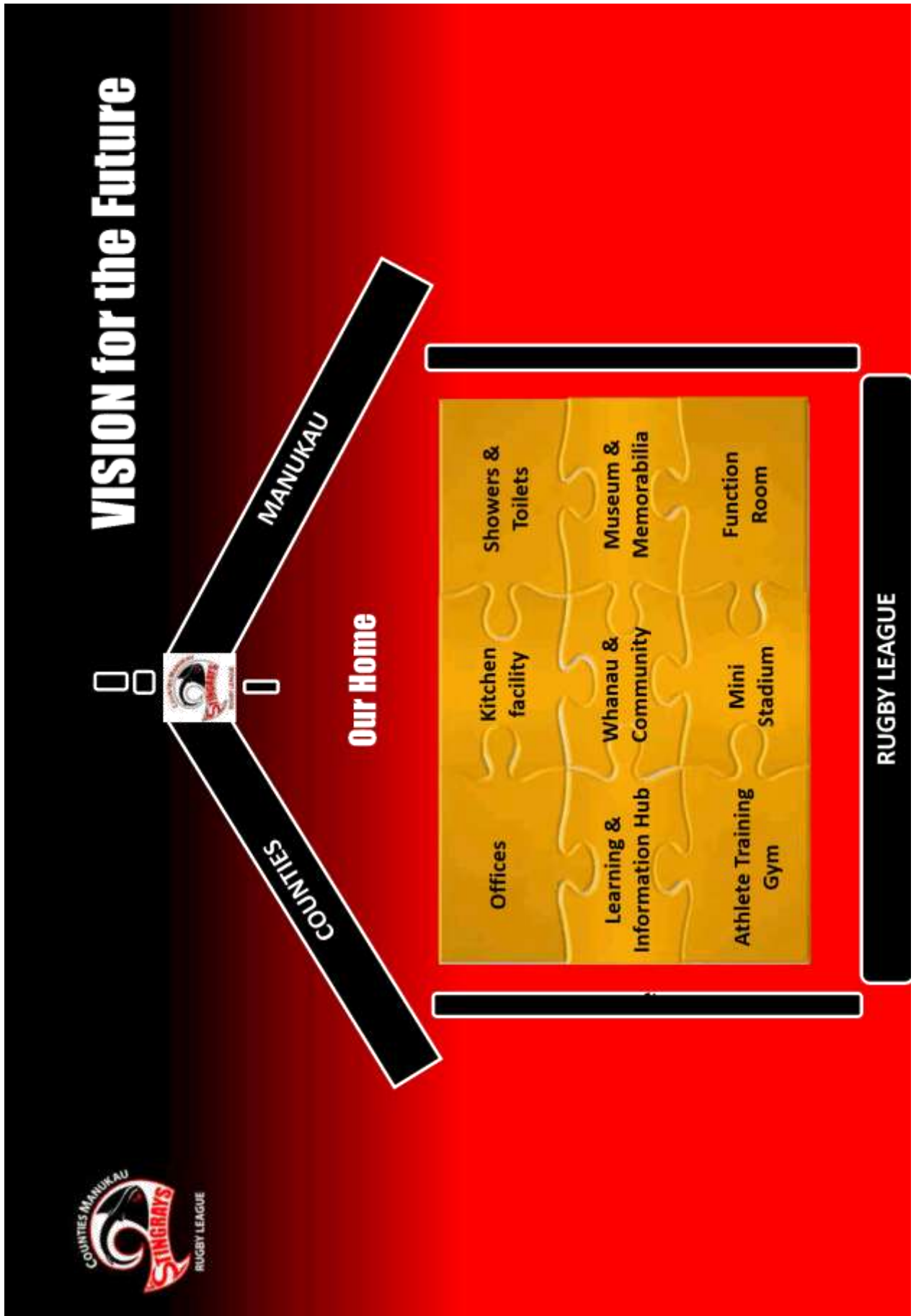
# Representative Players

International – Kiwis, Kiwi Ferns, NRL



Zone - Stingrays









**RUGBY LEAGUE  
WORLD CUP 2017**  
27 OCTOBER - 2 DECEMBER

NEW ZEALAND V SAMOA	28 October 2017	Auckland
NEW ZEALAND V SCOTLAND	4 November 2017	Christchurch
TONGA V SAMOA	4 November 2017	Hamilton
NEW ZEALAND V TONGA	11 November 2017	Hamilton
QUARTER FINAL	18 November 2017	Christchurch
QUARTER FINAL	18 November 2017	Wellington
SEMI FINAL	18 November 2017	Auckland





# The Road Ahead

## Our Game Plan

The journey ahead will have ups and downs but we can set our course and stay on track

- Regularly review our plan and measure our progress
- Have the perspective to see that issues are just bumps in the road that are temporary.
- Alignment with Key Partners is crucial





**THANK YOU  
for listening**

**Are there any Questions?**

