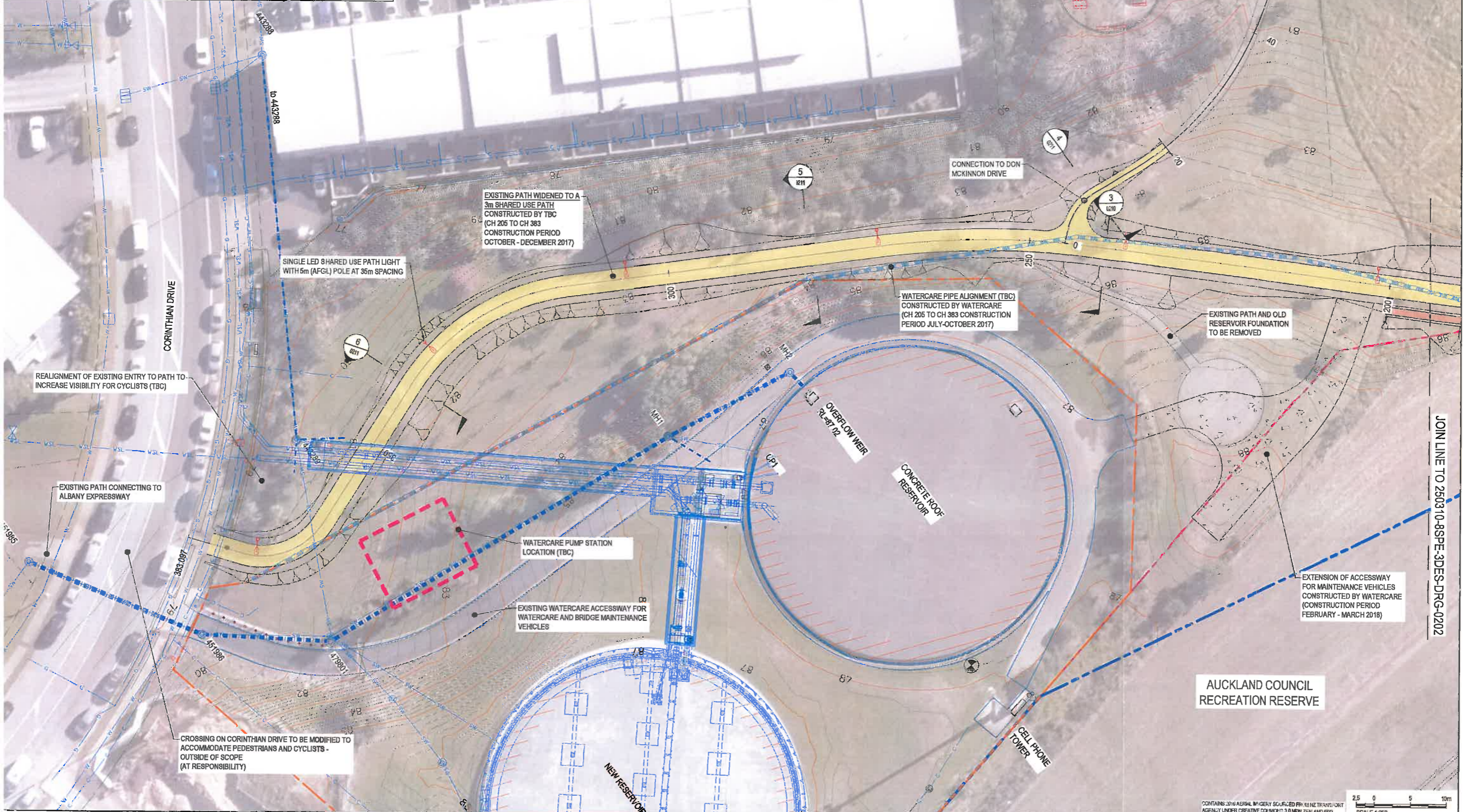


LEGEND

- EXISTING NZTA DESIGNATION BOUNDARY (Blue dashed line)
- EXISTING WATERCARE DESIGNATION (Red dashed line)
- ALTERATION TO EXISTING DESIGNATION BOUNDARY (MAIN WORKS) (Red dashed line)
- PROPOSED SHARED USE PATH (Yellow shaded area)
- PROPOSED RETAINING WALL (Blue dashed line with vertical bars)
- FILL SLOPE (Red dashed line with 'V' symbols)
- CUT SLOPE (Red dashed line with inverted 'V' symbols)
- PROPOSED WATERCARE PIPE (Blue dashed line with circles)



CONTAINS 3016 AERIAL IMAGERY SOURCED FROM LINZ TRANS/JOINT AGENCY UNDER CREATIVE COMMONS 3.0 NEW ZEALAND (BY) SCALE 1:250



REV	DATE	REVISION DETAILS	APPROVED
A	23.08.18	PRELIMINARY ISSUE	

SCALE	1:250
SIZE	A1
DRAWN	V. SMITH
DESIGNED	J. ATULUWAGE
CHECKED	

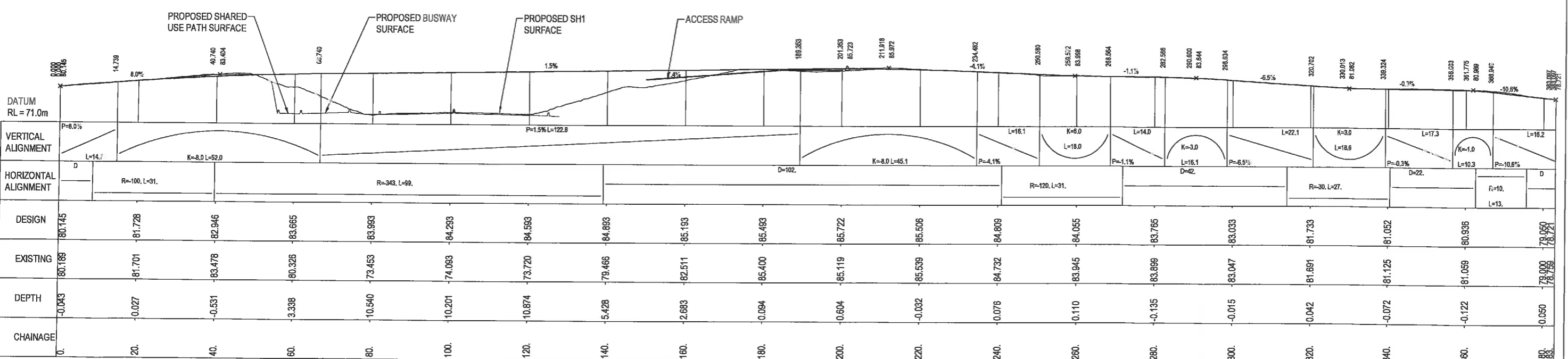
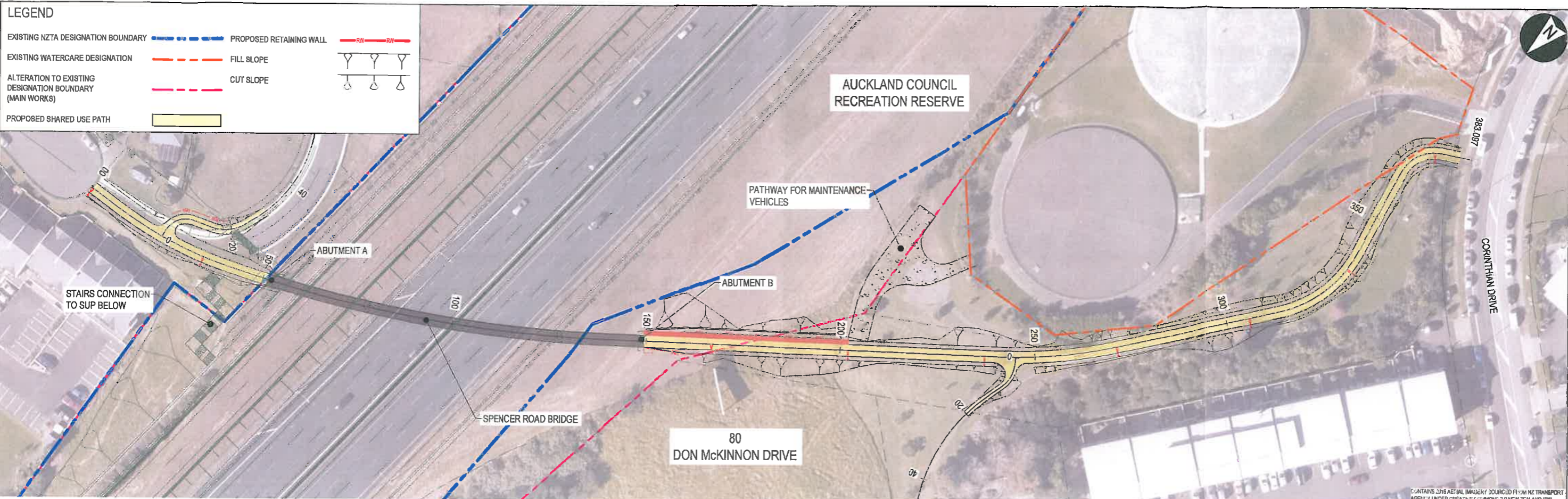
PRELIMINARY
NOT FOR CONSTRUCTION

APPROVED _____ DATE _____

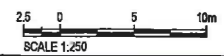
PROJECT	NORTHERN CORRIDOR IMPROVEMENTS										
TITLE	SPENCER ROAD BRIDGE GENERAL ARRANGEMENTS SHEET 1										
DRAWING No.	250310	STAGE	8SPE	WP	3PRE	TYPE	DRG	NUMBER	0201	REV	A

LEGEND

- EXISTING NZTA DESIGNATION BOUNDARY (Blue dashed line)
- EXISTING WATERCARE DESIGNATION (Red dashed line)
- ALTERATION TO EXISTING DESIGNATION BOUNDARY (MAIN WORKS) (Pink dashed line)
- PROPOSED SHARED USE PATH (Yellow shaded area)
- PROPOSED RETAINING WALL (Red line with 'R' markers)
- FILL SLOPE (Orange dashed line)
- CUT SLOPE (Red dashed line)



LONGITUDINAL SECTION ALONG DESIGN CONTROL LINE MCS0
1:500H 1:500V (A1)



REV	DATE	REVISION DETAILS	APPROVED
A		PRELIMINARY ISSUE	

SCALE	SIZE
1:500	A1

PRELIMINARY NOT FOR CONSTRUCTION	
APPROVED	DATE

PROJECT	NORTHERN CORRIDOR IMPROVEMENTS
TITLE	SPENCER ROAD BRIDGE PLAN & LONG SECTION SHEET 1
DRAWING No.	250310
PROJECT No.	8SPE
STAGE	3PRE
WP	DRG
TYPE	0205
NUMBER	
REV	A

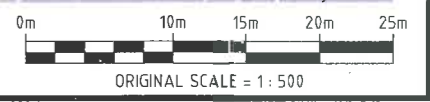


LEGEND

TEL	PROPOSED 500NB CLS WATERMAIN ALIGNMENT
GAS	CHORUS
GAS	MP4 GAS
ELEC	IP20 GAS
ELEC	ELECTRICITY
ELEC	ELECTRICITY - HV
FOC	MULTIPLE SERVICES (INCLUDING ELECTRICITY, STREETLIGHT, PILOT/FIBRE OPTIC, DUCT BANK)
SW	FIBRE OPTIC
W	STORMWATER
W	WATER SUPPLY
W	WASTEWATER

- NOTES**
1. WATERMAIN ALIGNMENT IS INDICATIVE ONLY, DEVELOPED SOLELY FOR THE PURPOSE OF PRELIMINARY DESIGN.
 2. LOCATION OF UTILITIES IS BASED ON READILY AVAILABLE RECORDS, PLANS AND OTHER INFORMATION, WHICH MAY NOT BE COMPLETE, ACCURATE OR UP TO DATE.
 3. GROUND LEVELS ARE BASED ON SURVEYED DATA SUPPLIED BY BECA.
 4. FOR DISCUSSION PURPOSES ONLY - NOT FOR CONSTRUCTION

PLAN
SCALE 1 : 500



C:\pwworkspace\cap...project\80507612-SK-C35.dwg
 Plot Date: Nov 11, 2016 - 15:37pm

ISSUE	DATE	AMENDMENT	BY	APPD.
1	11.11.16	ISSUED FOR PRELIMINARY DESIGN	TB	CV

DESIGNED	DATE	BY	DATE
Patricia Melero	11.11.16		
DESIGN CHECK	Christopher Powey	11.11.16	
DRAWN	Tim Buckley	11.11.16	
CAD REVIEW	Max Dyer	11.11.16	
DESIGN REVIEW	Christopher Powey	11.11.16	
MWH APPROVED	Chris van der Boom	11.11.16	

OPERATIONS

Watercare

MWH

HARRISON GRIERSON

COPYRIGHT - This drawing, and the design concept, remain the exclusive property of Watercare Services Limited and may not be used without approval. Copyright reserved.

PINEHILL WATERMAIN (WMPH1)
SPENCER RESERVE SITE PLAN

CAD FILE 80507612-SK-C35.dwg DATE 11.11.16	
ORIGINAL SCALE A3	CONTRACT No.
REF. No. 80507612-SK-C35	ISSUE 1
DWG. No.	