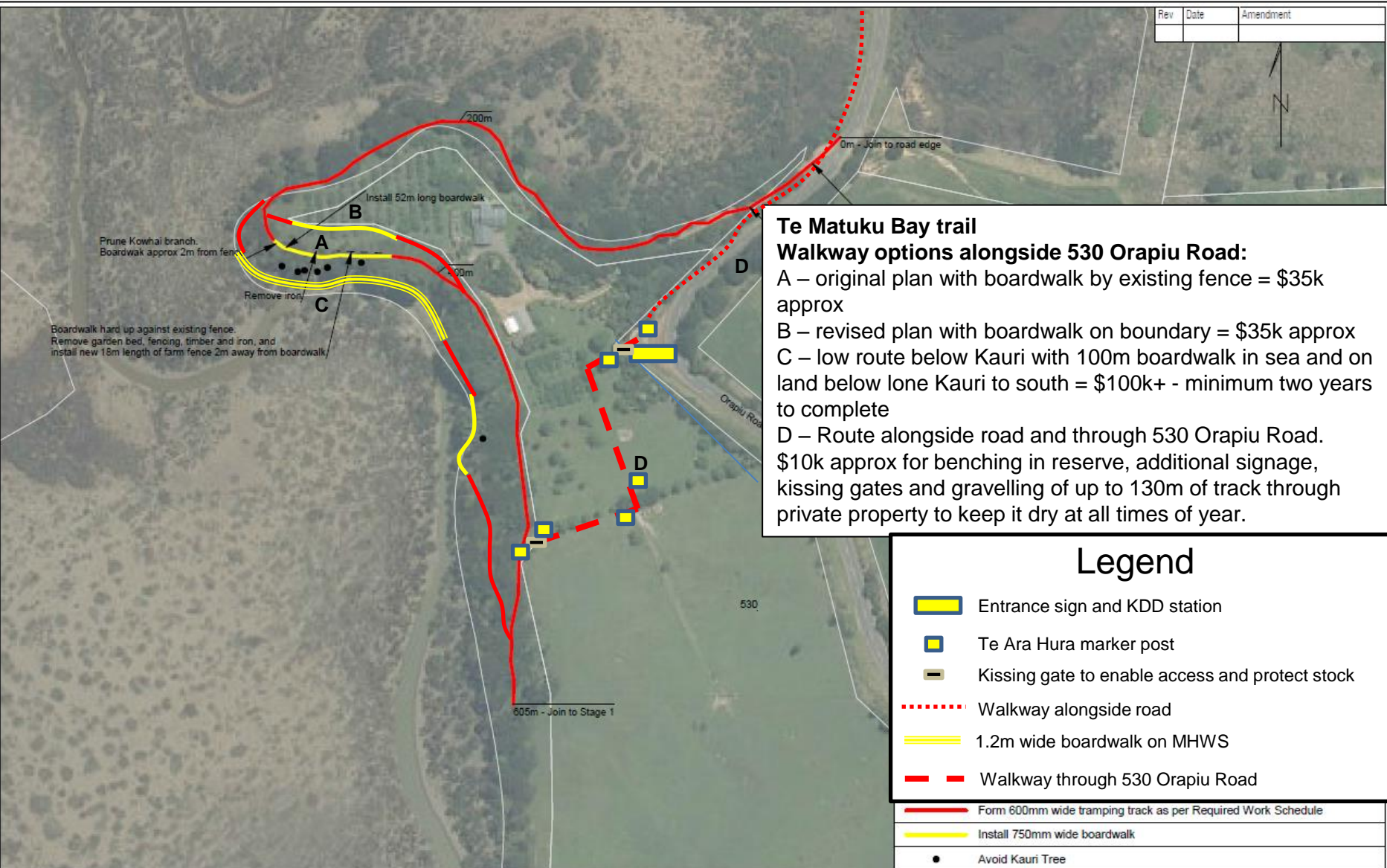


Rev	Date	Amendment



**Te Matuku Bay trail**  
**Walkway options alongside 530 Orapiu Road:**  
 A – original plan with boardwalk by existing fence = \$35k approx  
 B – revised plan with boardwalk on boundary = \$35k approx  
 C – low route below Kauri with 100m boardwalk in sea and on land below lone Kauri to south = \$100k+ - minimum two years to complete  
 D – Route alongside road and through 530 Orapiu Road. \$10k approx for benching in reserve, additional signage, kissing gates and gravelling of up to 130m of track through private property to keep it dry at all times of year.

### Legend

- Entrance sign and KDD station
- Te Ara Hura marker post
- Kissing gate to enable access and protect stock
- Walkway alongside road
- 1.2m wide boardwalk on MHWS
- Walkway through 530 Orapiu Road
- Form 600mm wide tramping track as per Required Work Schedule
- Install 750mm wide boardwalk
- Avoid Kauri Tree

**Frame Group Limited**  
 PO BOX 147211, PONSONBY, AUCKLAND 1144  
 LEVEL 2, 16 COLLEGE HILL, AUCKLAND, NZ  
 PHONE: 64 9 638 7221 FAX: 64 9 376 0513  
 © FRAME GROUP LTD. 2016

PREPARED FOR  
  
 Auckland Council  
 Te Hāhau o Te ōkai Māori

PROJECT  
**TE MATUKU TRACK DEVELOPMENT**  
**STAGE 2**

TITLE  
**DETAILED PLAN**

SCALE Plan Scale 1:1500 @ A3	Date: MAY 2016
DRAWN DK	PSL JOB 15/041/01
APPROVED	DRAWING 01
	REV