

Attachment H Motuara Waimauku Scout Group initial concept plans prepared by scouts detailing options; one, two, three and four

Notes: Colours mentioned in description relate to drawn lines/shapes on aerial photo attached, read with aerial photo for clarification. Read this with the additional document on the driveway and parking route/placement description.

Based on maximum capacity of 80 persons in the hall

The "yellow dotted" driveway is in a wetter area of the park, so might not be viable with further technical advice.

Driveway measurements

Red driveway (existing)	189m x 4m = 756 sqm
Blue driveway (new)	66m x 4m wide = 264sqm
Solid yellow driveway (new)	262m x 4m = 264sqm
Dotted yellow driveway (new)	112m x 4m = 1048sqm
Dotted orange driveway (between parks)	63m x 4m wide = 252 sqm

Yellow or Blue carpark measurements

38 regular carparks and 2 accessible carparks

15m x 50m at 2.6m wide = 750sqm

Options 1 to 3 are 4 metre wide two way driveways, option 4 is one way 3m wide driveway.

Driveway and carpark option combinations, measurements

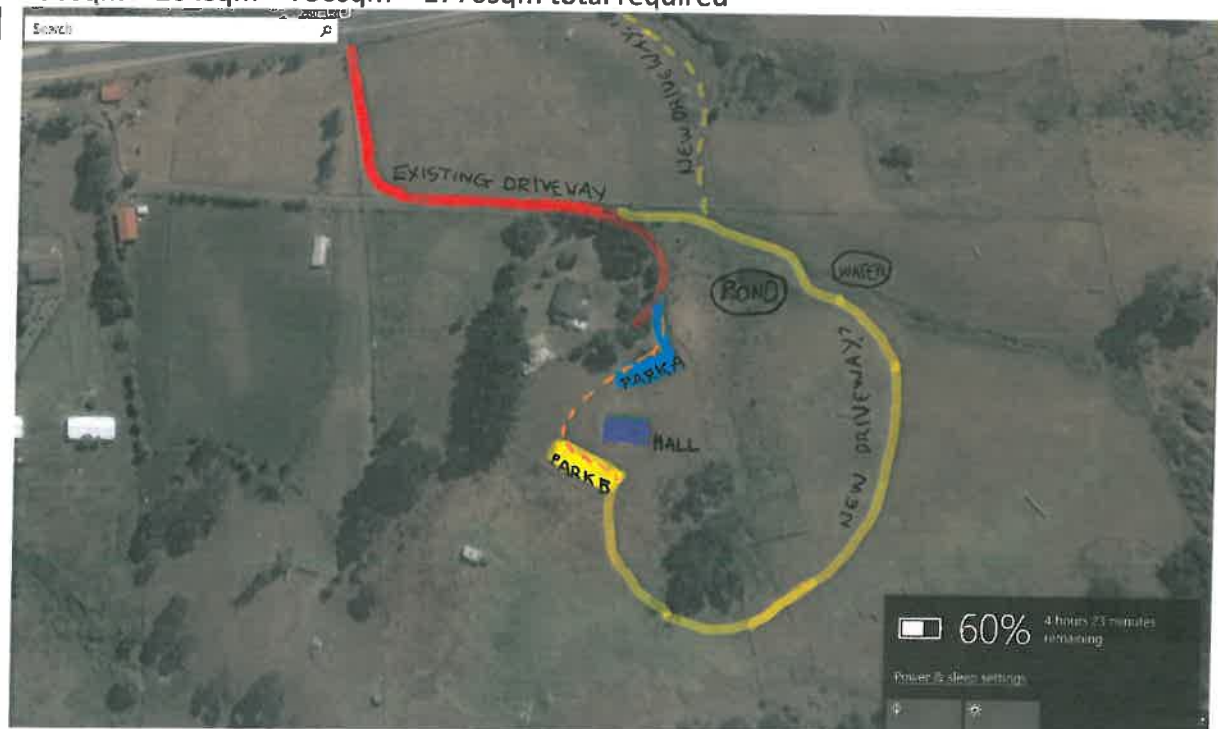
Option one

Add to and upgrade the existing driveway

- Existing is red line from Pollard lane, new additions are short blue line and blue carpark (A)

Red + Blue + Blue park A

756sqm + 264sqm + 750sqm = 1770sqm total required



Option two

Add to existing driveway and create new driveway

- Existing is red line from Pollard lane, new addition is solid yellow line up to and including yellow carpark (B)

Red + solid Yellow + Yellow park B

756sqm + 1048sqm + 750sqm = 2554sqm total



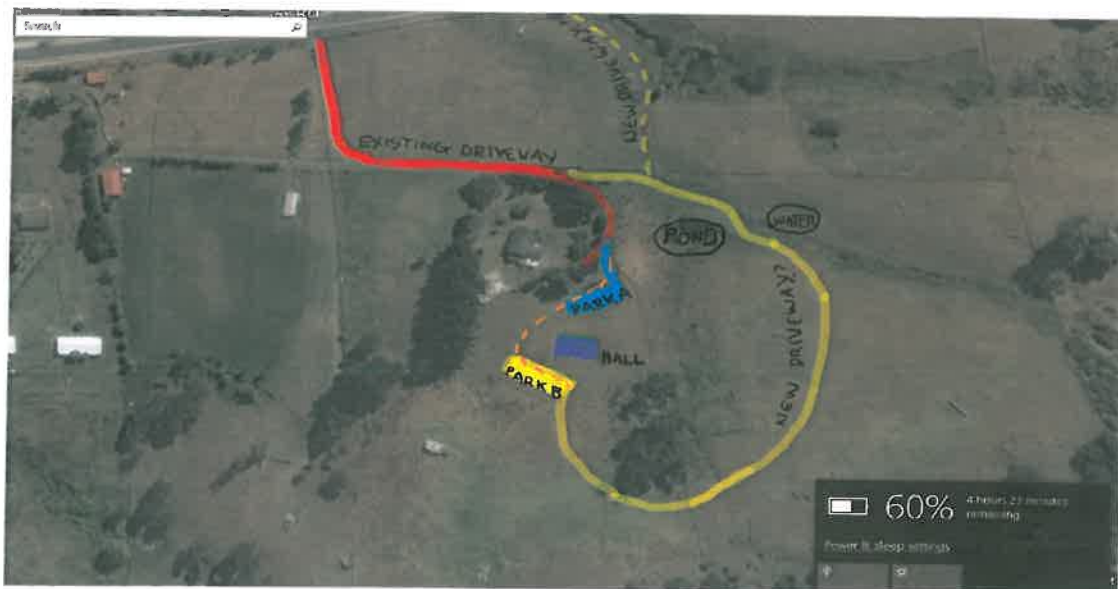
Option three

New driveway

- Yellow dotted to solid yellow line, up to and including yellow carpark (B)

Yellow dotted + Yellow solid + Yellow park B

448sqm + 1048sqm + 750sqm = 2246sqm total



Option four (one way system with driveways 3m wide)

New driveway, but under a one way system (unlike options 1 to 3 which is a two way driveway)

- Yellow dotted to solid yellow line, up to and including yellow carpark (B), then into orange dotted line, into blue line, and onto red existing driveway to complete.

Yellow dotted + Yellow solid + Yellow Park B + Blue + Red driveways
2076 sqm + 750sqm = 2826sqm total

