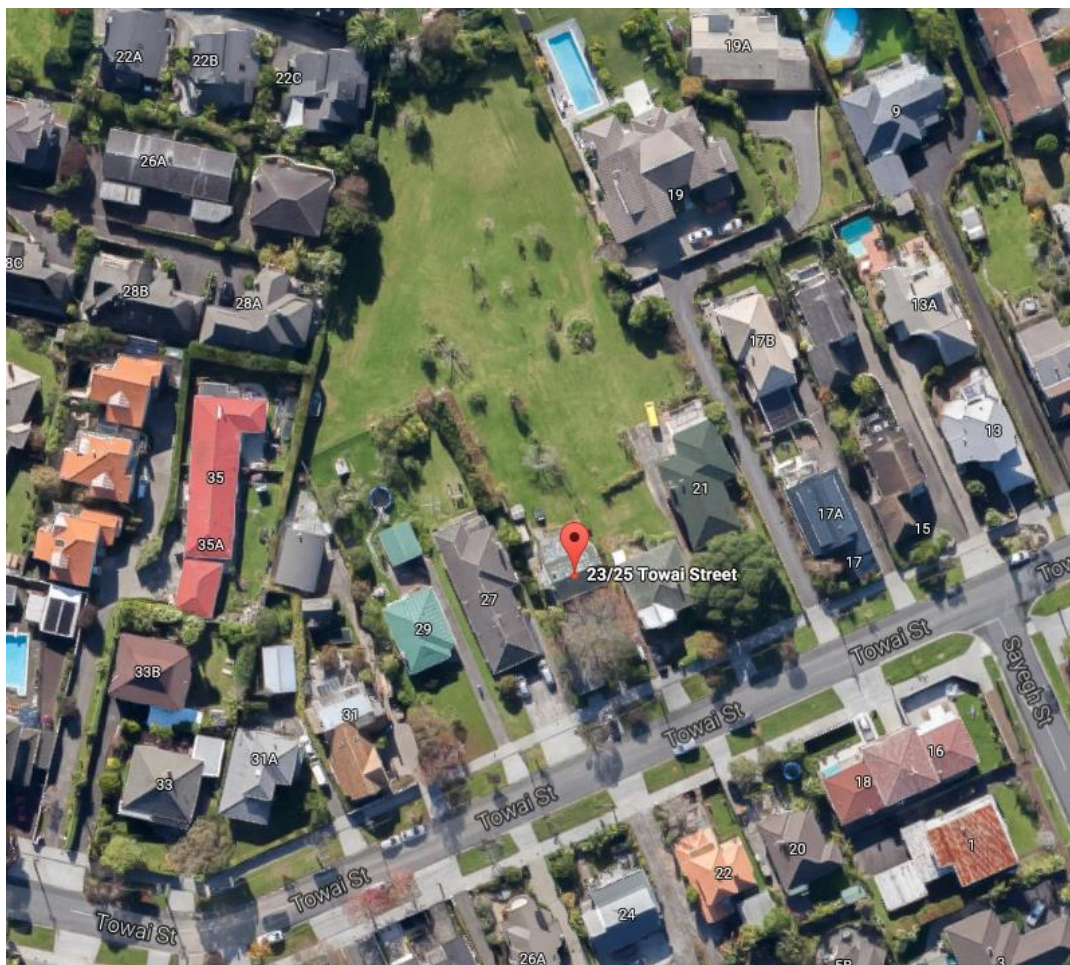
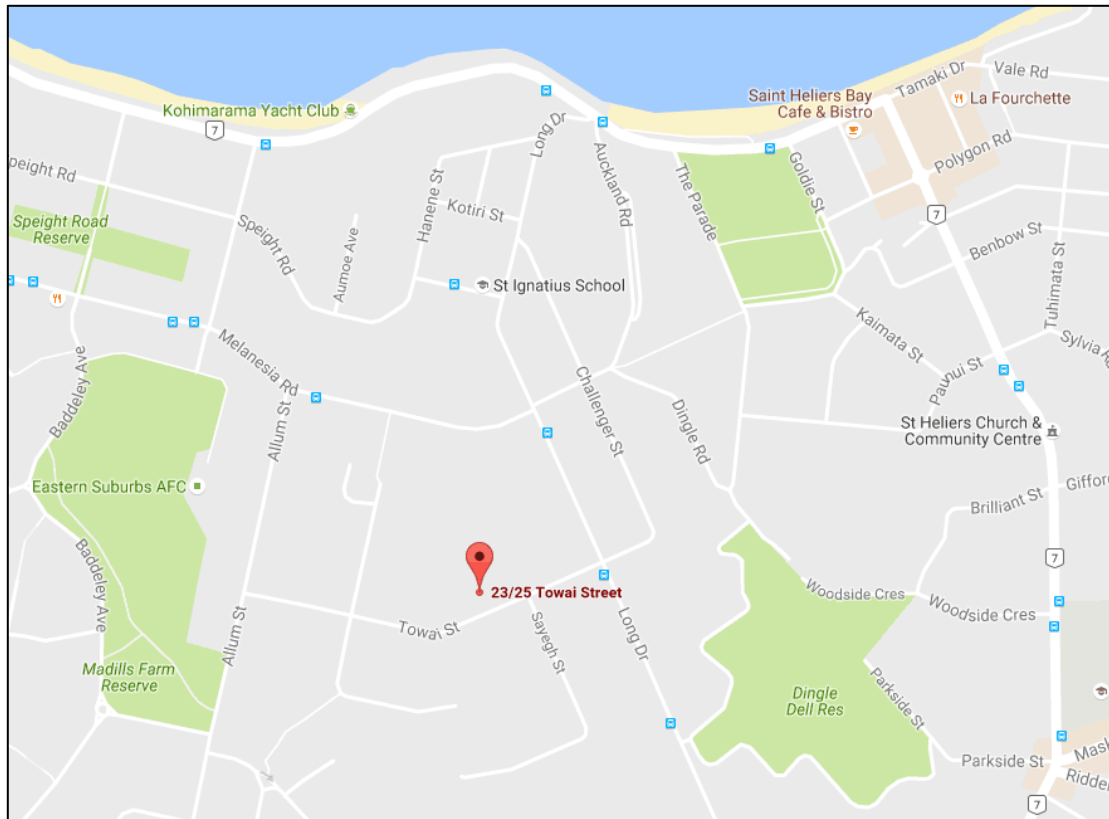
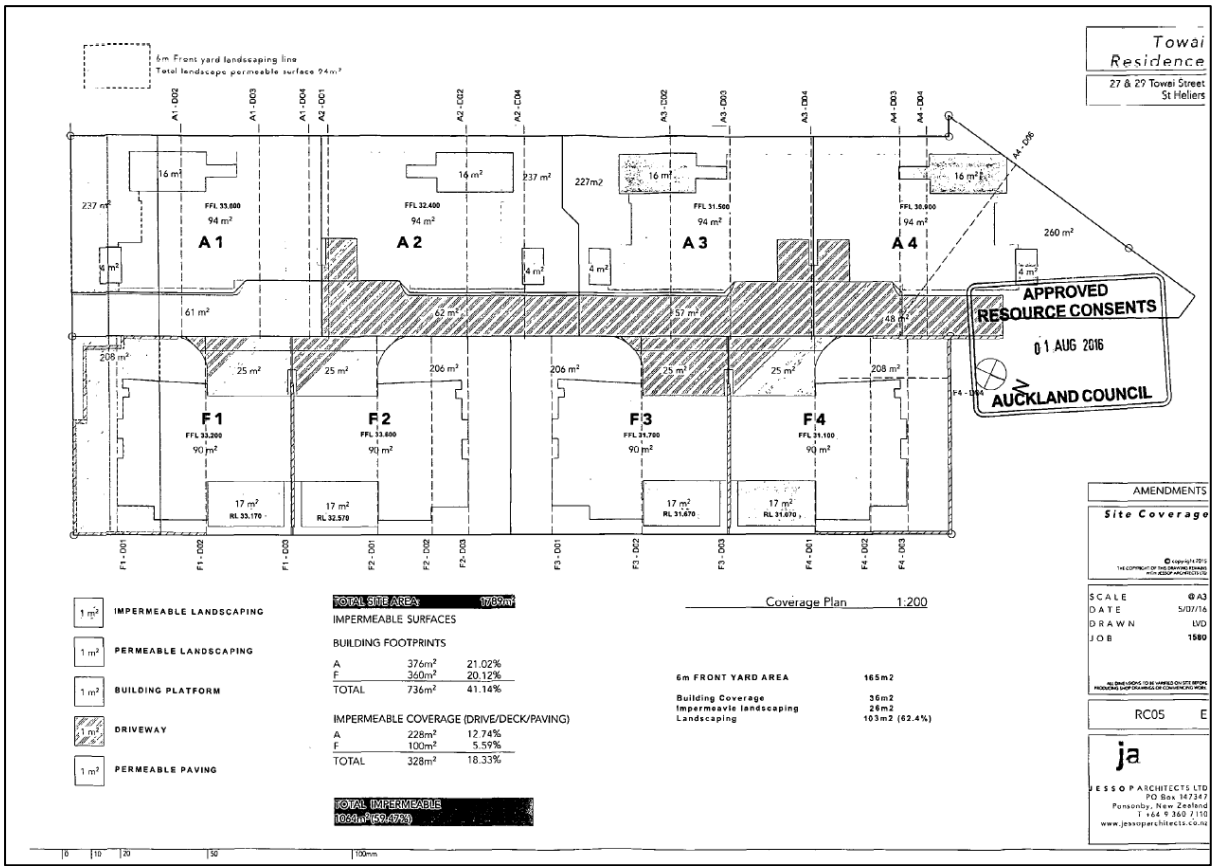
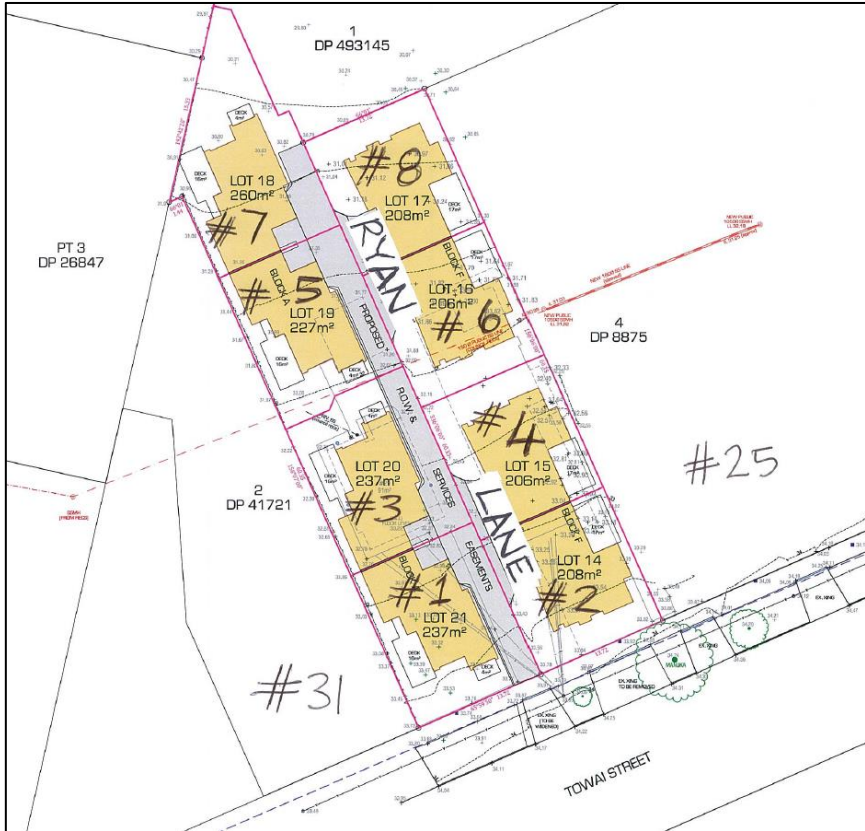


# Attachment 1: Towai Street Development, St Heliers - Location Map



# 27-29 Towai Street, St Heliers (Proposed Ryanville Lane)



Towai Residence  
27 & 29 Towai Street  
St Heliers

**APPROVED RESOURCE CONSENTS**  
01 AUG 2016  
AUCKLAND COUNCIL

AMENDMENTS  
Site Coverage  
© Jessop Architects Ltd  
14 COPPIN STREET, NEW ZEALAND  
PH: 09 366 7150  
WWW.JESSOPARCHITECTS.CO.NZ

ja  
JESSOP ARCHITECTS LTD  
PO Box 347247  
Ponsonby, New Zealand  
T +64 9 366 7150  
www.jessoparchitects.co.nz