

# Attachment A Coastguard Kaipara Incorporated Drawings

## Initial Proposal Drawings

These drawings are a guide for the proposed new building ('The Shed') for Coastguard Kaipara.

This initial concept is to provide interested parties with the general overall concept being put forward for land use and funding approvals.

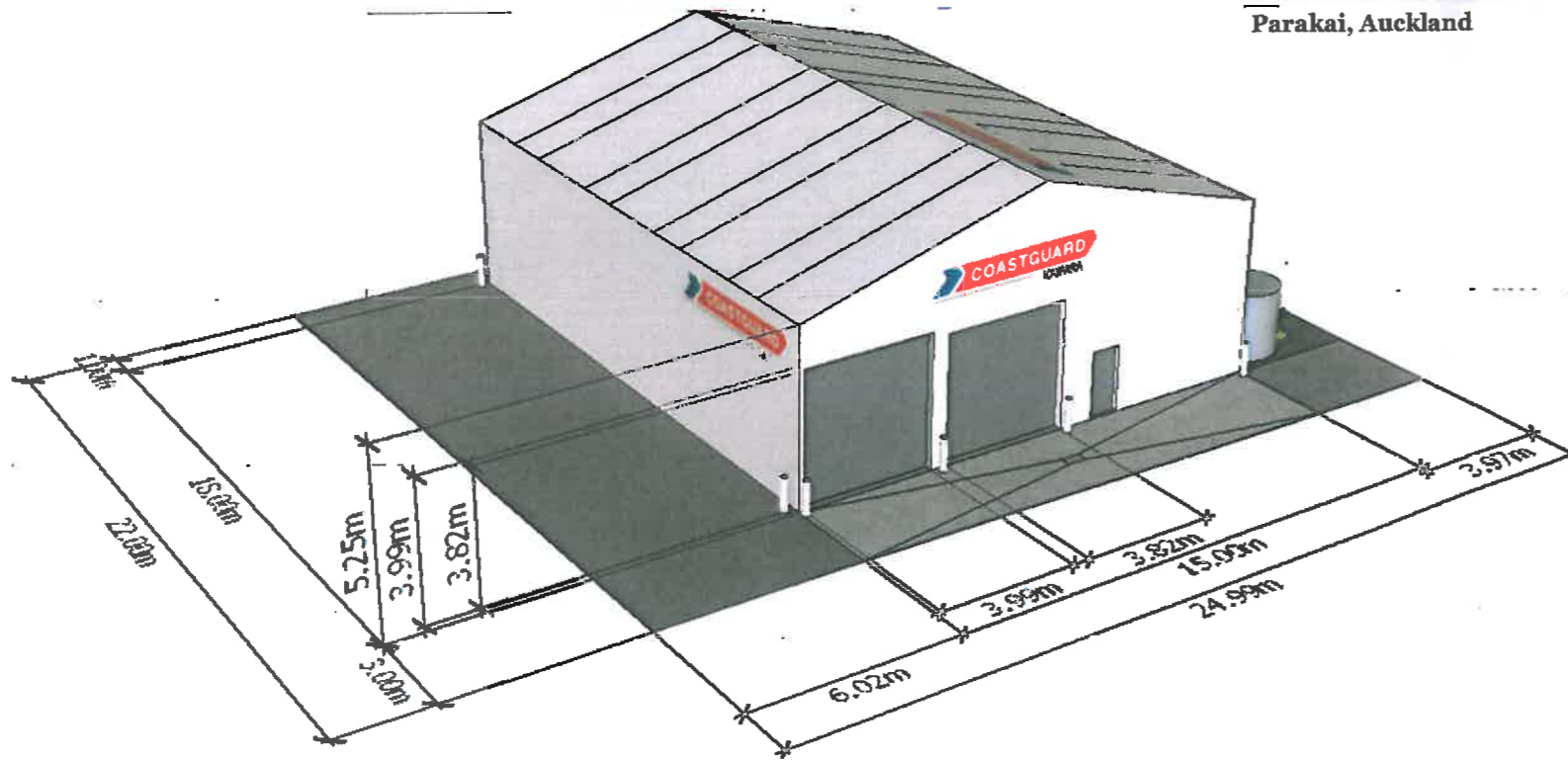
The current facility used by Coastguard Kaipara is at 82 Mill Road, Helensville. The proposed location improves response times and provides an all tide ramp for launching the rescue vehicles.

## Drawing List

- Cover Page
- Lo.1 Landscaping Plan
- Lo.2 Planting Plan
- Lo.3 Site Plan
- Lo.4 Floor Plans
- L.05 Elevations

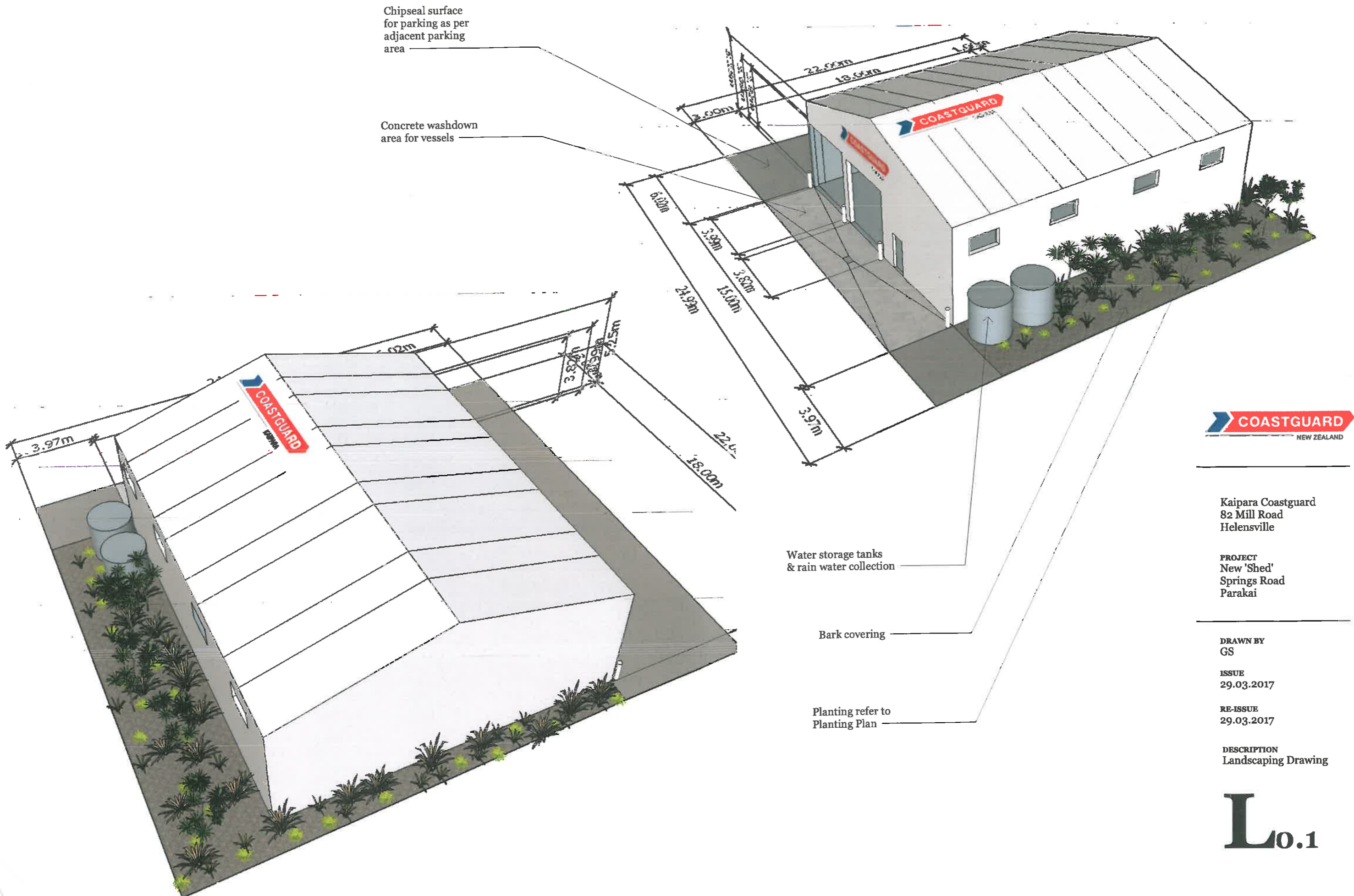


Parakai, Auckland



Proposed Site - Springs Road, Parakai

**Proposed Landscape Plan**



Kaipara Coastguard  
82 Mill Road  
Helensville

**PROJECT**  
New 'Shed'  
Springs Road  
Parakai

**DRAWN BY**  
GS

**ISSUE**  
29.03.2017

**RE-ISSUE**  
29.03.2017

**DESCRIPTION**  
Landscaping Drawing

**L0.1**

## Proposed Planting Plan

The general concept is to keep the planting similar to what is already pre existing around the site, and in keeping with the southern Kaipara.

Further advice will be sought through the planning and consenting phases.

Currently, the site consists of mostly grassed areas with adjacent chip seal parking. The site is boarded by a large group of Toetoe (Toi Toi).

The following species of plants have been selected:-



### Toetoe or Toi Toi Cortaderia - the New Zealand pampas grasses.

Toi Toi is a common spelling for this grass, though Toetoe is preferred by botanists. They are both Maori words, and both sound the same! There are four similar species (Cortaderia toetoe, Cortaderia fulvida, Cortaderia splendens and Cortaderia richardii) found in different areas in New Zealand. They are all closely related to that undesirable introduced Pampas grass (Cortaderia seloana or Cortaderia jubata).



### Cordyline australis - cabbage tree, ti, ti kouka, palm lily

Common palm-like tree with an erect trunk branching into tufts of tough long narrow pointed leaves and with bushy sprays of small white flowers. Bark rough. Leaves 30-100cm long, only slightly tapered at base, dead leaves often forming a skirt around branches. Fruit small, white.



### Phormium tenax - NZ Flax, Mountain Flax, Swamp Flax, Harakeke.

Flower spikes rise above the plant and bear twisted looking flowers, to which birds are attracted for the nectar. Curiously, many of the red varieties don't flower, however the purples, greens and yellows do.

Phormium will grow just about anywhere. Although Phormium cookianum has the common name Mountain Flax, it is found at sea level and up to 1300m growing on cliff faces. Phormium tenax prefers damp conditions but is happy in coastal spots as well as forest swamps. They will grow in any reasonable soil, and will handle extreme heat and cold, salt winds, and wet feet. The coloured varieties could be considered slightly less hardy.

Little care is needed but you can do a few things to get the most out of them. Remove old and dead leaves for appearance, dividing and re-planted will keep them looking fresh. Some of the coloured varieties can get a leaf spot which can be sprayed out.



### Carex 'Frosted Curls'

The leaves on this native grass are an attractive frosted green, with a graceful habit. Grows in most soil conditions but does best in free draining soil. Plant in full sun for best results but is happy in half day sun. Cold and wind hardy. A suitable coastal plant.

Very little care required but like all grasses a little combing will keep them looking fresh and tidy. Just pull the garden rake through the plant to remove all the dead and/ or dry growth. If they get too dry or too wet they can 'brown' off at the tips. Just cut them back and they will quickly re-grow.



### Dicksonia squarrosa - rough tree fern, harsh tree fern, wheki

Tree fern up to 8 m tall. Usually forming colonies. Trunks covered in dead, black stipe ends, not dense, and often bearing aerial buds. Live fronds often untidy and tattered, usually falling when dead or forming irregular, messy skirt



### Phormium cookianum purpurea -

NZ Flax, Mountain Flax, Swamp Flax, Harakeke.

Flower spikes rise above the plant and bear twisted looking flowers, to which birds are attracted for the nectar. Curiously, many of the red varieties don't flower, however the purples, greens and yellows do.

Phormium will grow just about anywhere. Although Phormium cookianum has the common name Mountain Flax, it is found at sea level and up to 1300m growing on cliff faces. Phormium tenax prefers damp conditions but is happy in coastal spots as well as forest swamps. They will grow in any reasonable soil, and will handle extreme heat and cold, salt winds, and wet feet. The coloured varieties could be considered slightly less hardy.

Little care is needed but you can do a few things to get the most out of them. Remove old and dead leaves for appearance, dividing and re-planted will keep them looking fresh. Some of the coloured varieties can get a leaf spot which can be sprayed out.



Kaipara Coastguard  
82 Mill Road  
Helensville

PROJECT  
New 'Shed'  
Springs Road  
Parakai

DRAWN BY  
GS

ISSUE  
29.03.2017

RE-ISSUE  
29.03.2017

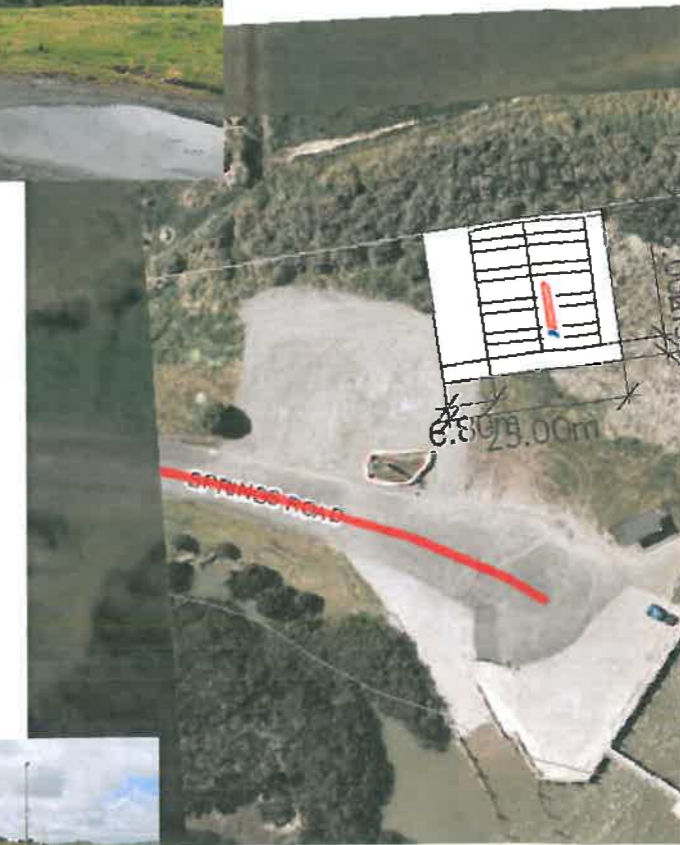
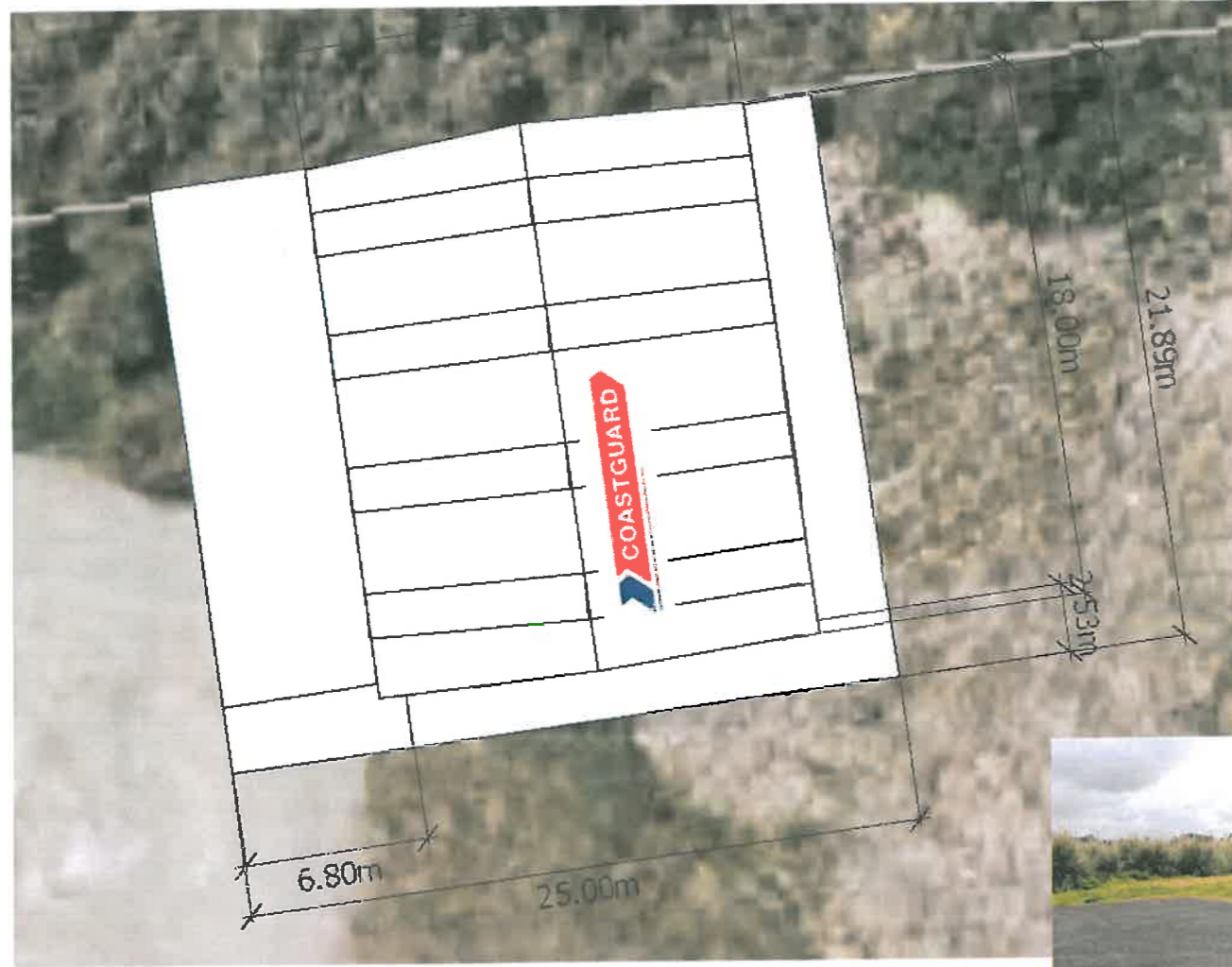
DESCRIPTION  
Planting Plan

**L0.2**

**Proposed Landscape Plan**

**Site Plan**

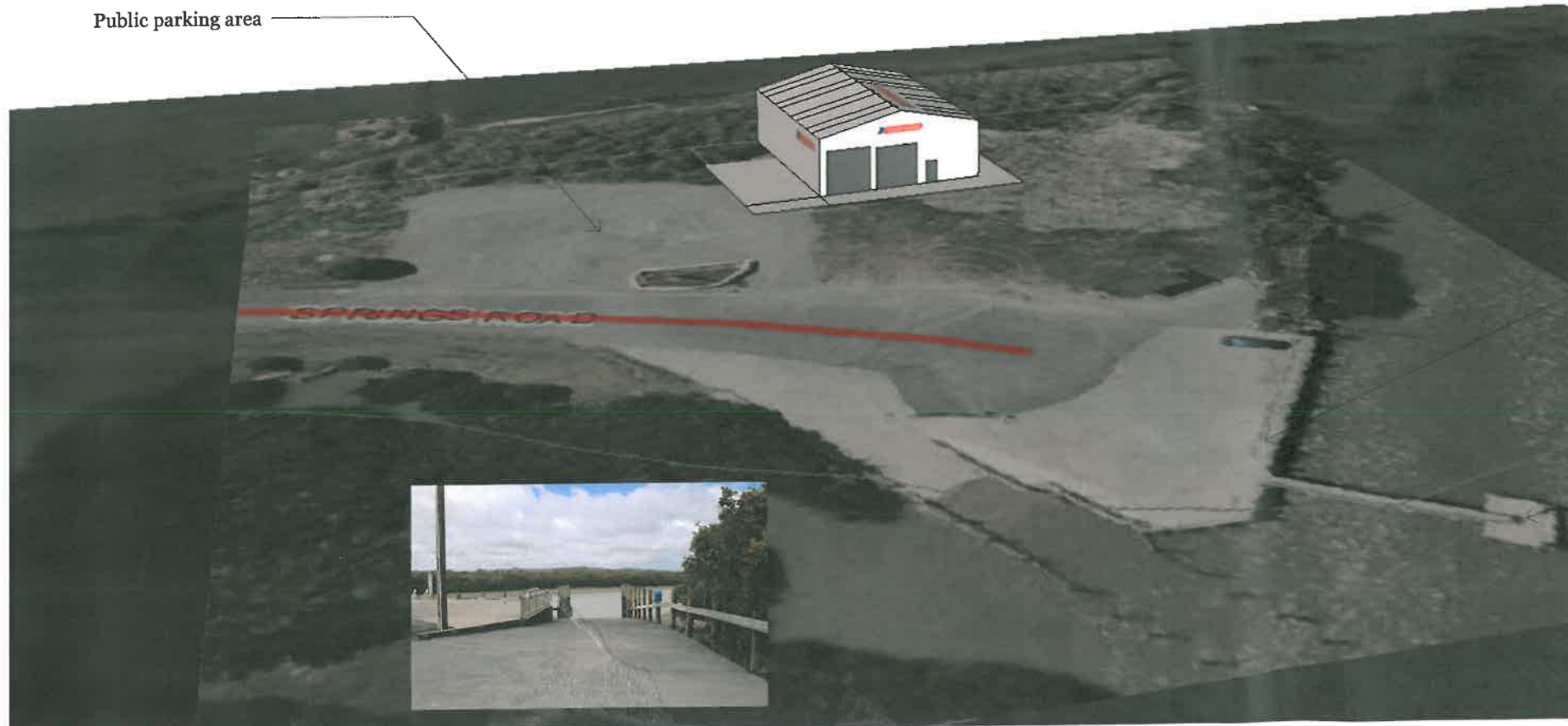
Sec 1 SO 327676  
550 m<sup>2</sup>  
25.000 m x 22.000 m



Pan view of the proposed site



Public parking area



Pumping station

Paraki Wharf - all tide launching facility with pontoon

Pontoon



Kaipara Coastguard  
82 Mill Road  
Helensville

PROJECT  
New 'Shed'  
Springs Road  
Parakai

DRAWN BY  
GS

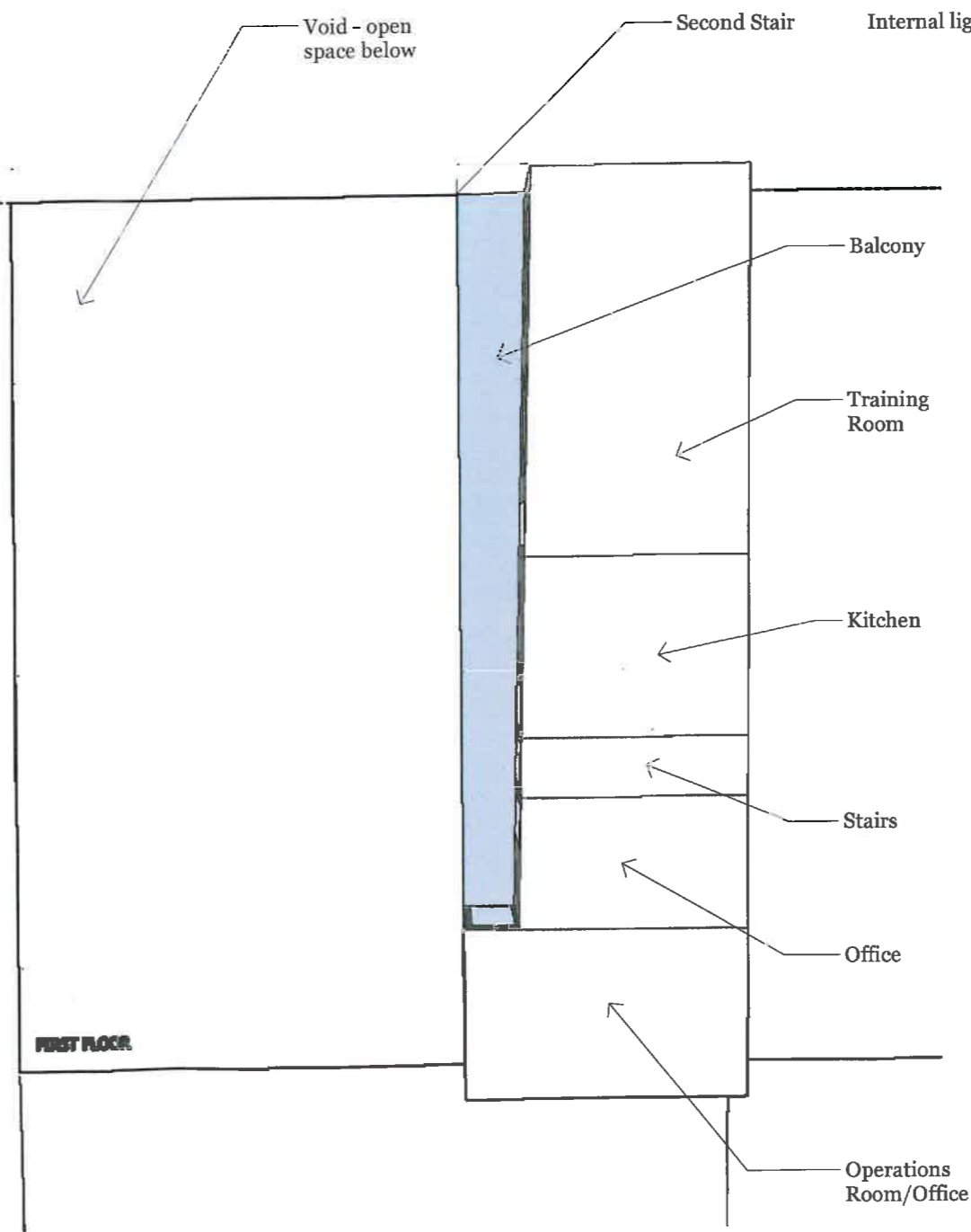
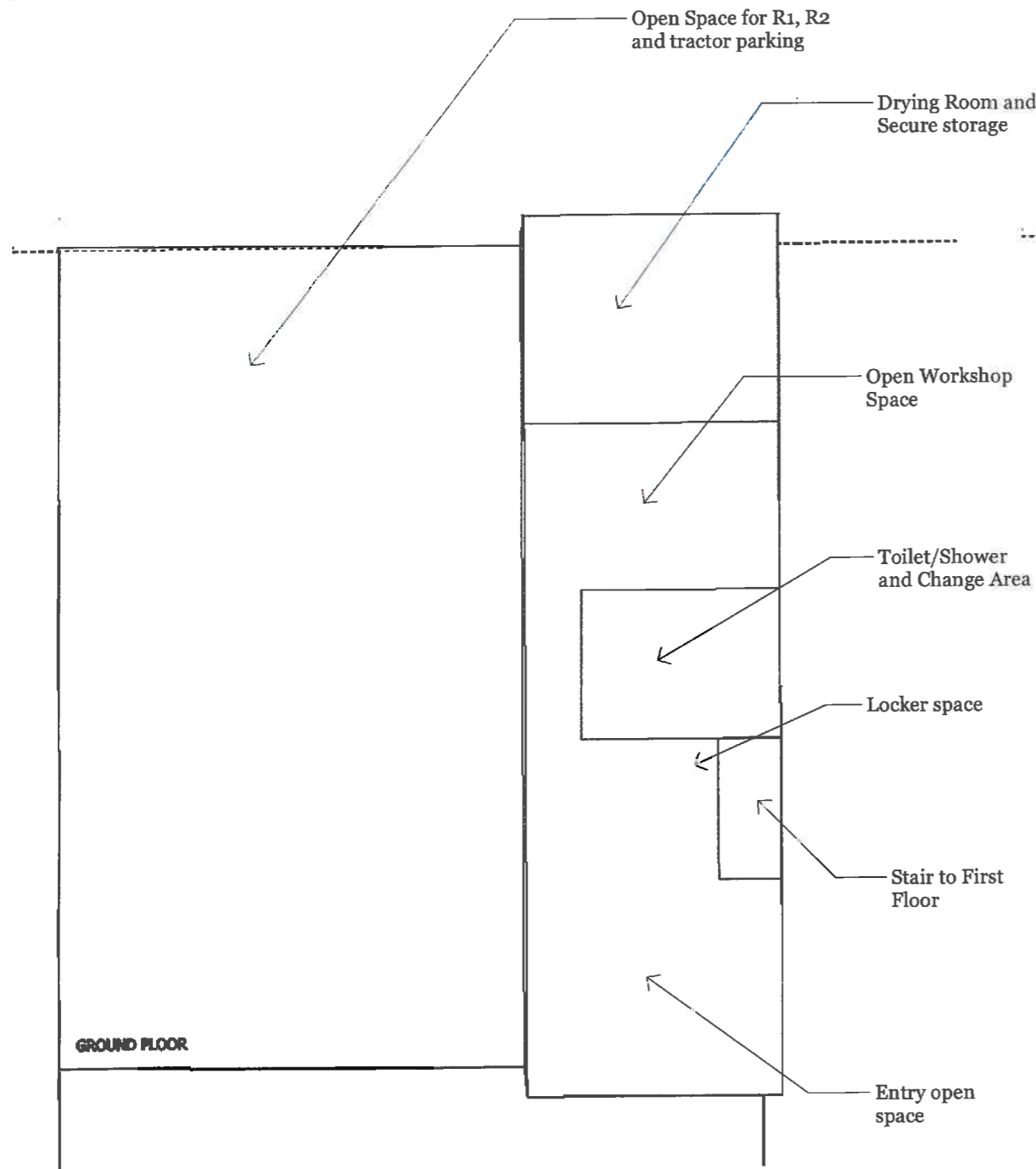
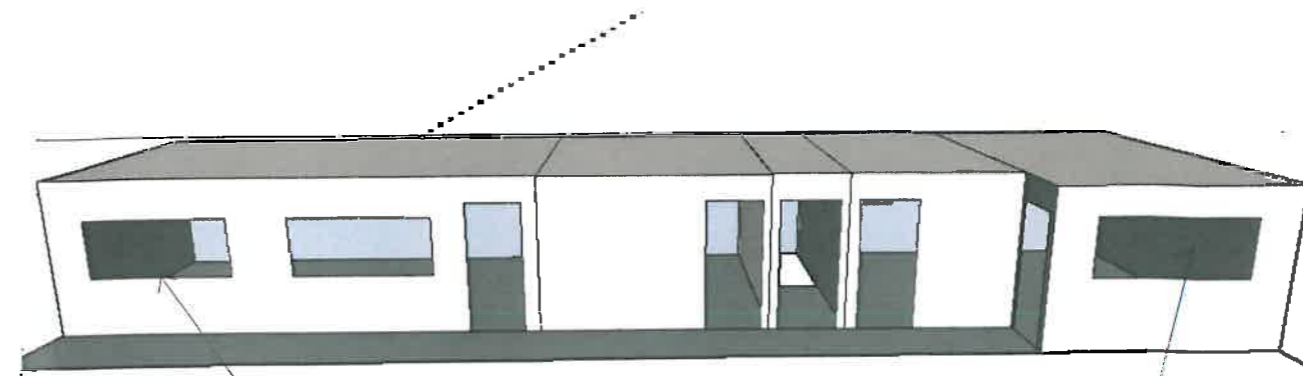
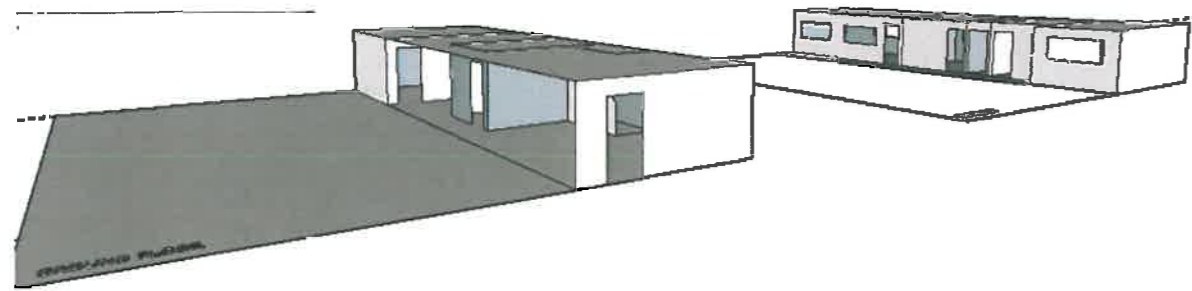
ISSUE  
29.03.2017

RE-ISSUE  
29.03.2017

DESCRIPTION  
Site Plan

**L0.3**

**Proposed Floor Plans**



Internal lights

Internal light



Kaipara Coastguard  
82 Mill Road  
Helensville

PROJECT  
New 'Shed'  
Springs Road  
Parakai

DRAWN BY  
GS

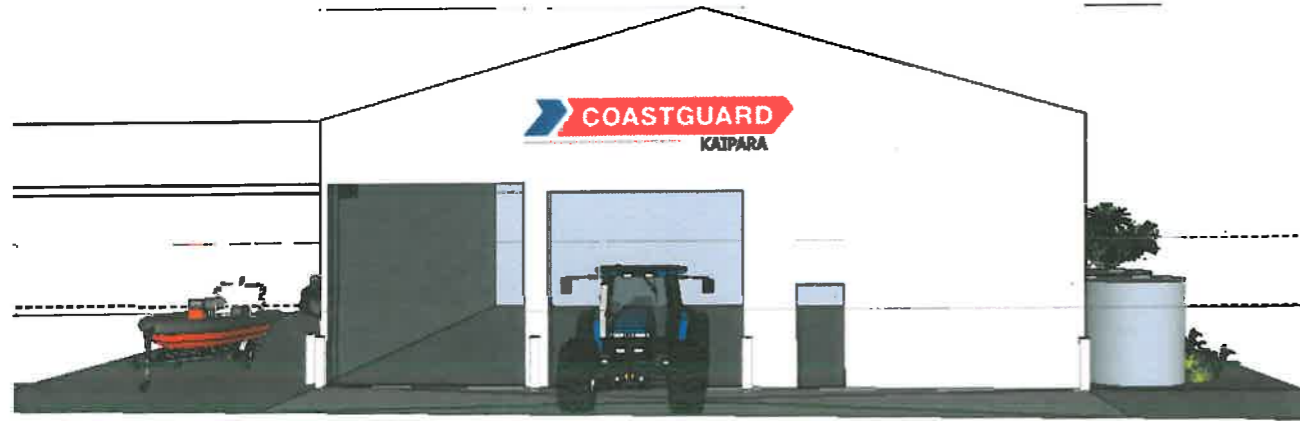
ISSUE  
29.03.2017

RE-ISSUE  
29.03.2017

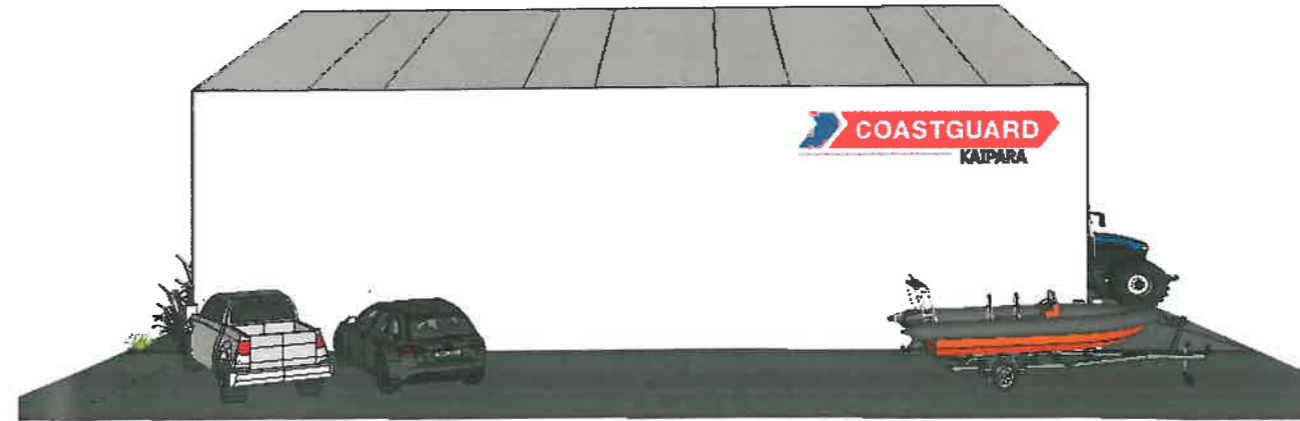
DESCRIPTION  
Floor Plans

**L0.4**

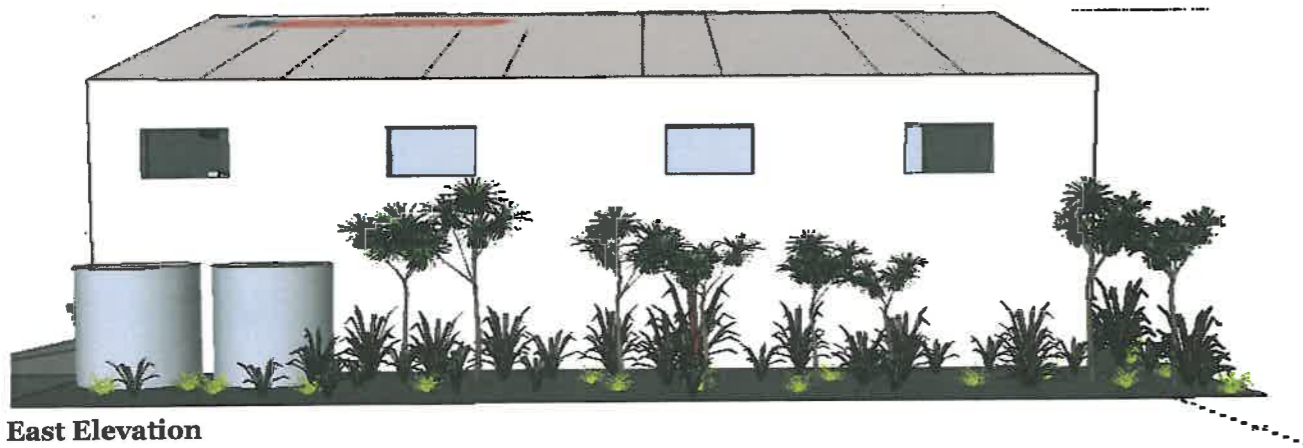
**Proposed Elevations**



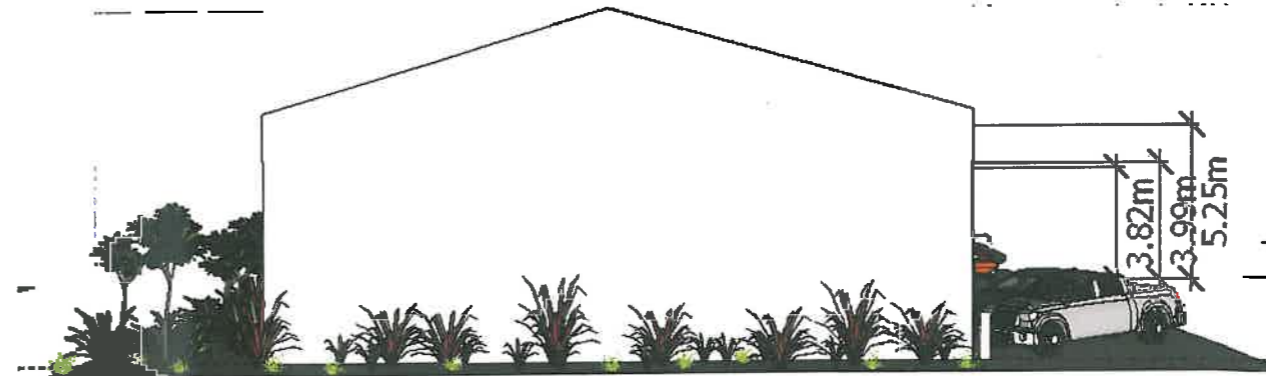
**South Elevation (Front)**



**West Elevation**



**East Elevation**



**North Elevation**



Kaipara Coastguard  
82 Mill Road  
Helensville

PROJECT  
New 'Shed'  
Springs Road  
Parakai

DRAWN BY  
GS

ISSUE  
29.03.2017

RE-ISSUE  
29.03.2017

DESCRIPTION  
Elevations

**L0.5**