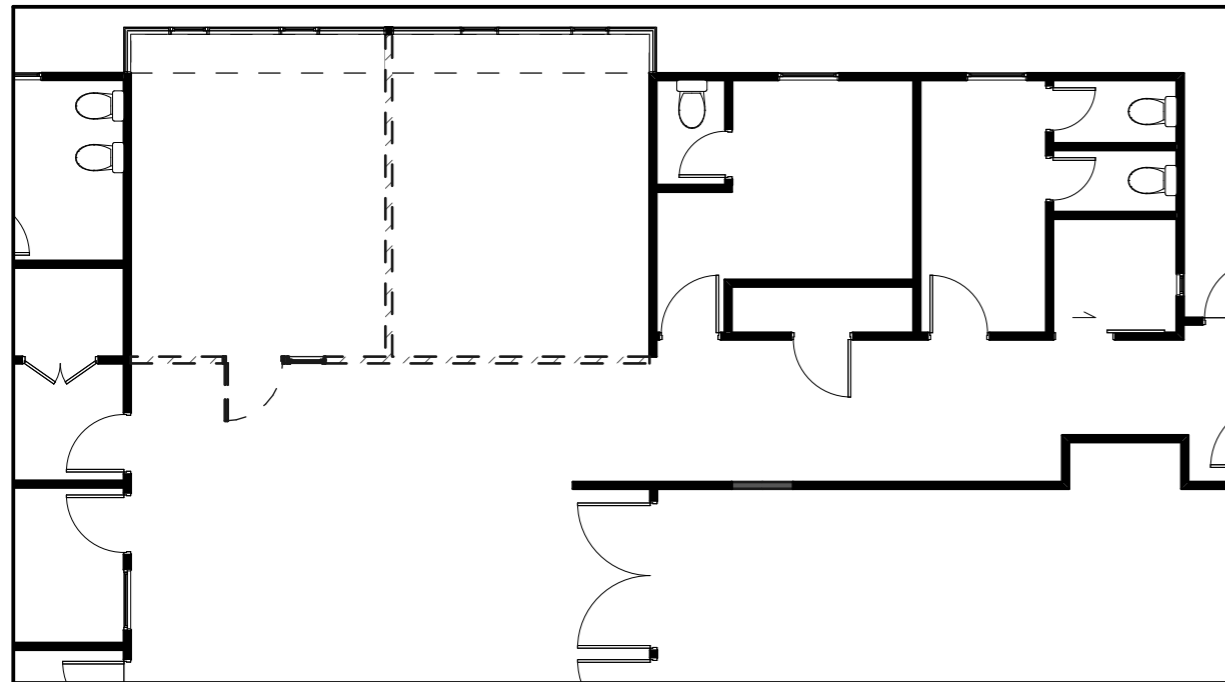


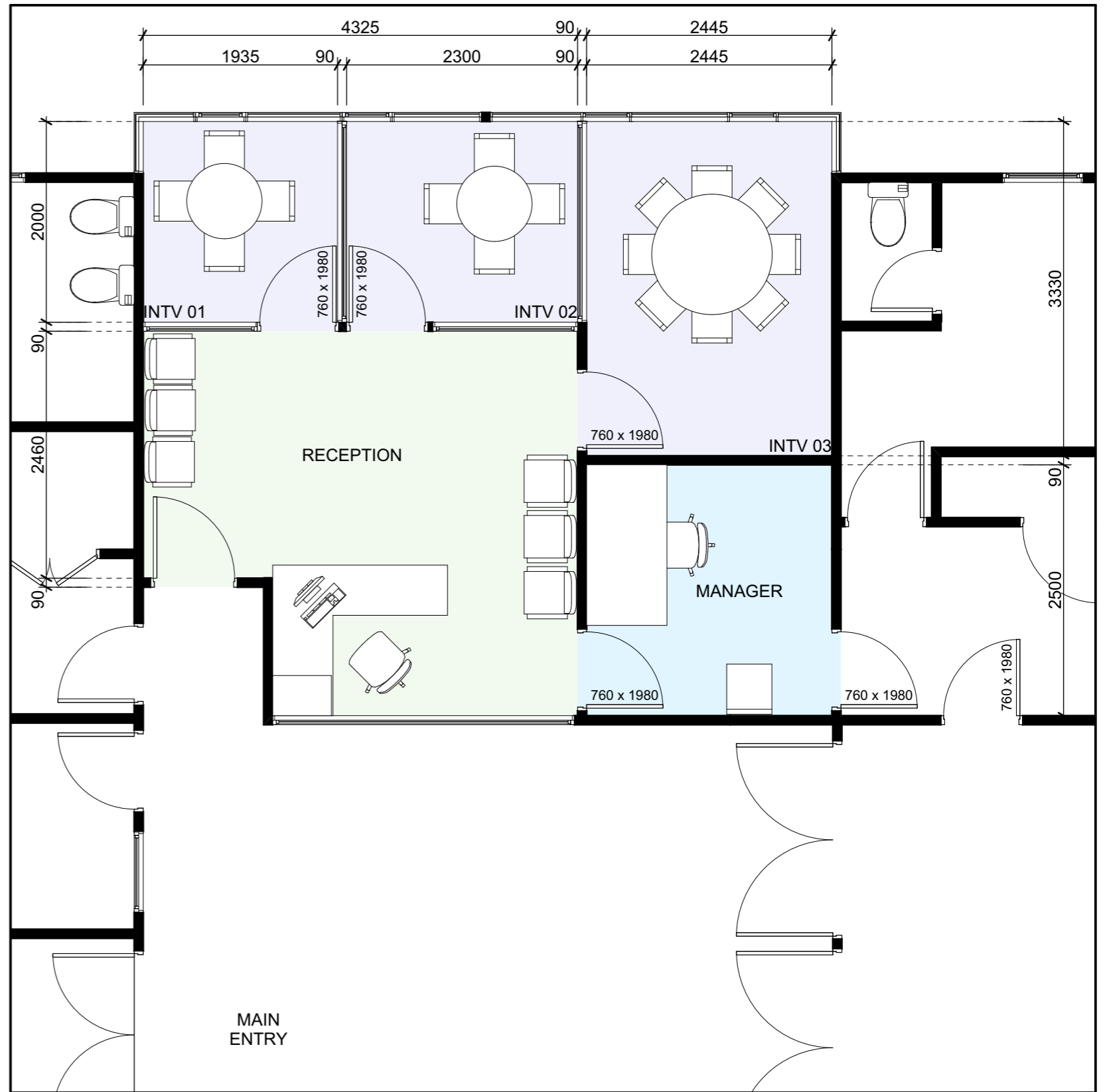
2
-

EXISTING PLAN
1:100



3
-

DEMOLITION PLAN
1:100



1
-

PROPOSED FLOOR PLAN
1:50

GLEN INNES - COMMUNITY CENTRE
REFURBISHMENT

M M A

MATTHEWS & MATTHEWS
ARCHITECTS LTD

PH 379 2282 - WWW.MMARCHITECTS.CO.NZ
P.O.BOX 108-166 SYMONDS STREET AUCKLAND

REF: 678 ISS/REV: ### DATE 4/03/2016
COPYRIGHT © MATTHEWS & MATTHEWS ARCHITECTS LTD