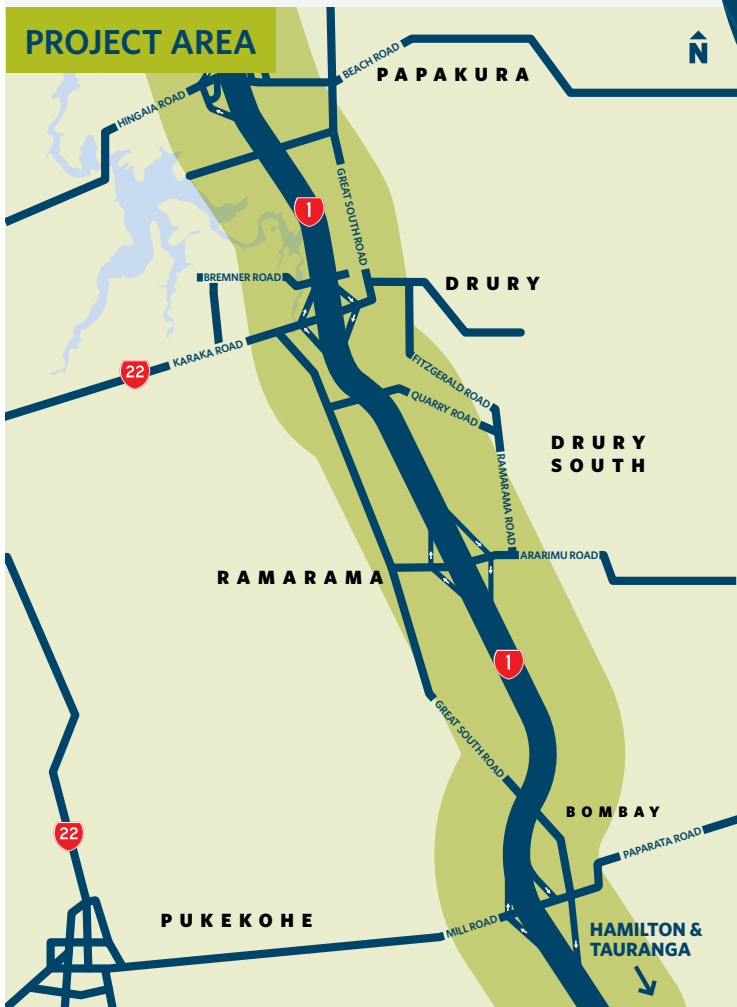




IMPROVEMENTS TO AUCKLAND'S SOUTHERN MOTORWAY

**SUPPORTING GROWTH IN
SOUTH AUCKLAND**



The NZ Transport Agency is working with Auckland Transport and Auckland Council on the Supporting Growth Programme, developing transport networks to support Auckland's new housing and business areas.

Up to one million more people are expected to call Auckland home within the next 30 years, with the largest growth occurring in the south of Auckland. To support this increase in population growth, the Supporting Growth Programme will deliver significant new transport infrastructure. This will include new and improved public transport, rail upgrades, upgrades to road corridors, safety improvements and new walking and cycling routes.

This project is one of many planned to support growth in the south of Auckland. We are investigating what improvements could be made to SH1 between Papakura and Bombay.

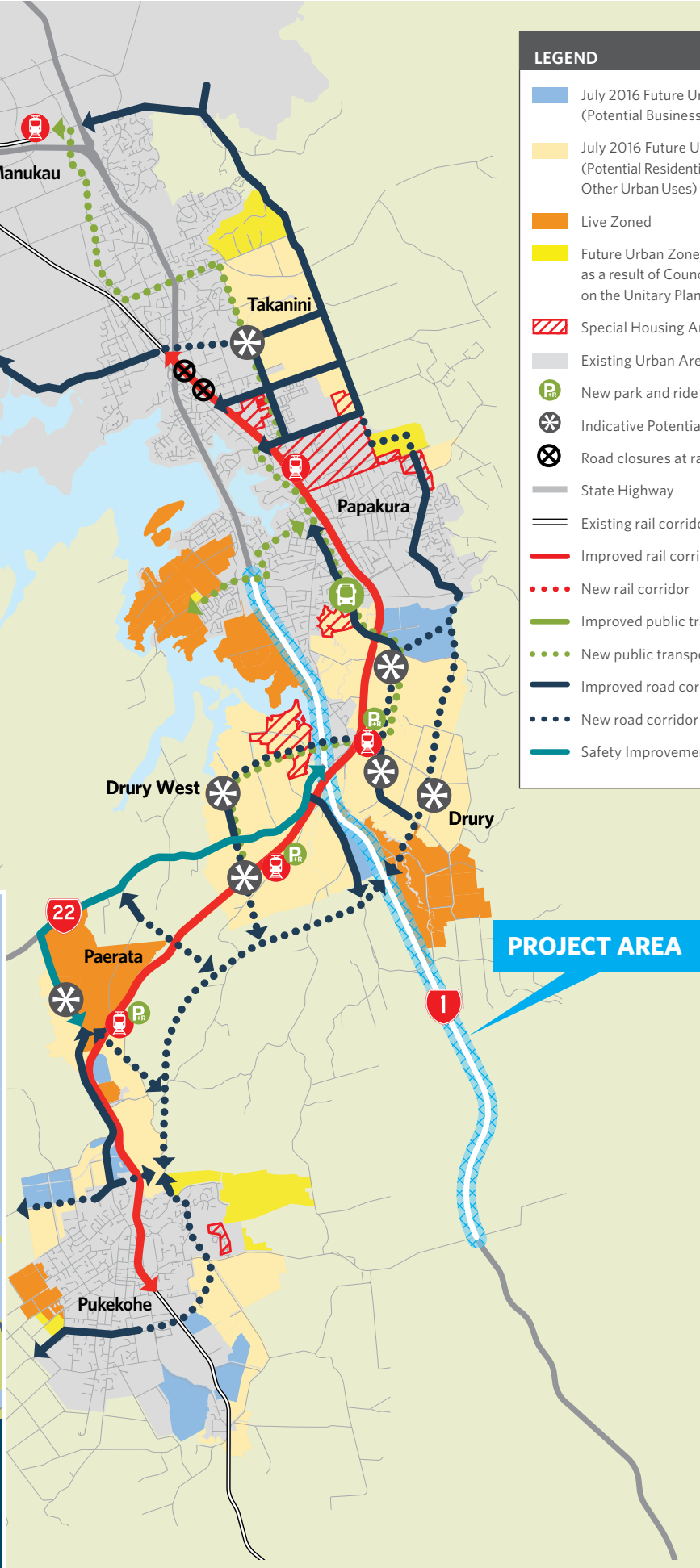
Over the next 30 years, this area is also the largest future growth area in Auckland, with around 5,300 hectares of land identified for urban development. Over the next 30 years, this has the potential to result in an additional 42,000 homes and 19,000 jobs.

LEGEND

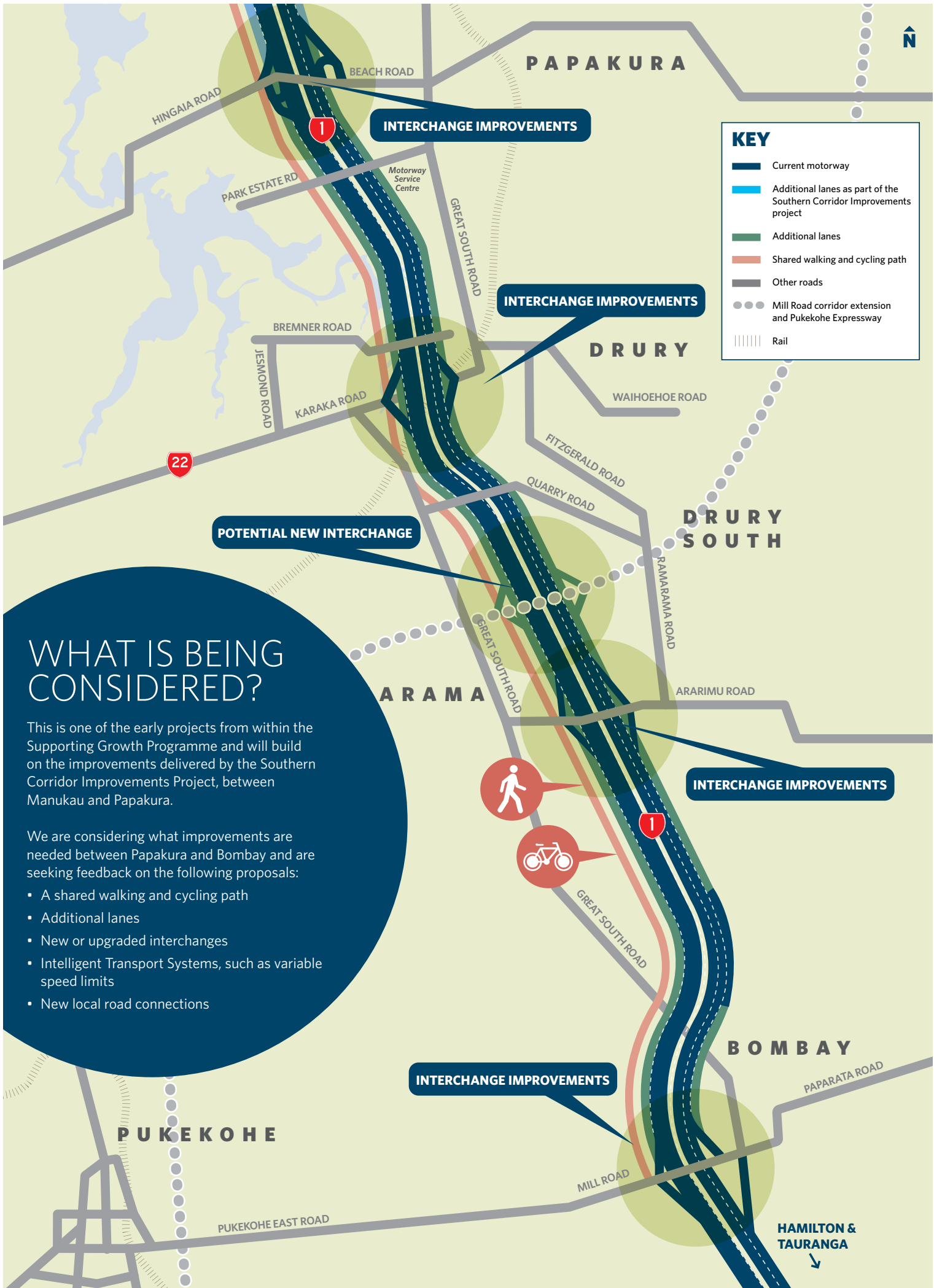
- July 2016 Future Urban Zone (Potential Business)
- July 2016 Future Urban Zone (Potential Residential & Other Urban Uses)
- Live Zoned
- Future Urban Zone added as a result of Council decisions on the Unitary Plan
- Special Housing Area
- Existing Urban Area
- P New park and ride
- * Indicative Potential New Centre
- X Road closures at rail level crossing
- State Highway
- Existing rail corridor
- Improved rail corridor
- New rail corridor
- Improved public transport corridor
- New public transport corridor
- Improved road corridor
- New road corridor
- Safety Improvements



SH1 is a critical transport link, supporting economic growth in the upper North Island, particularly in the south of Auckland and the north of Waikato. On this corridor, trucks make up around 10% of traffic and a 58% increase in freight volumes is expected by 2042.



Projects within the programme will be prioritised for delivery over the next 30 years, subject to funding approvals. Projects will require statutory approvals and will be subject to Resource Management Act and Land Transport Management Act public participation processes. Land use is subject to further investigation, as well as resolution of appeals and statutory process arising from the Unitary Plan process.



KEY	
	Current motorway
	Additional lanes as part of the Southern Corridor Improvements project
	Additional lanes
	Shared walking and cycling path
	Other roads
	Mill Road corridor extension and Pukekohe Expressway
	Rail

WHAT IS BEING CONSIDERED?

This is one of the early projects from within the Supporting Growth Programme and will build on the improvements delivered by the Southern Corridor Improvements Project, between Manukau and Papakura.

We are considering what improvements are needed between Papakura and Bombay and are seeking feedback on the following proposals:

- A shared walking and cycling path
- Additional lanes
- New or upgraded interchanges
- Intelligent Transport Systems, such as variable speed limits
- New local road connections

INTERCHANGE IMPROVEMENTS

INTERCHANGE IMPROVEMENTS

POTENTIAL NEW INTERCHANGE

INTERCHANGE IMPROVEMENTS

INTERCHANGE IMPROVEMENTS



HAMILTON & TAURANGA
↓

WALKING AND CYCLING

The project could include a new shared walking and cycling path along the western side of the motorway corridor. It would be a continuation of the shared path being constructed as part of the Southern Corridor Improvements Project.

The path would connect with communities on either side of the motorway. As well as connections at interchanges, there would also be connections to local roads along the route. We're also investigating walking and cycling only cross-motorway connections. These connections would enable the development of planned future walking and cycling networks.



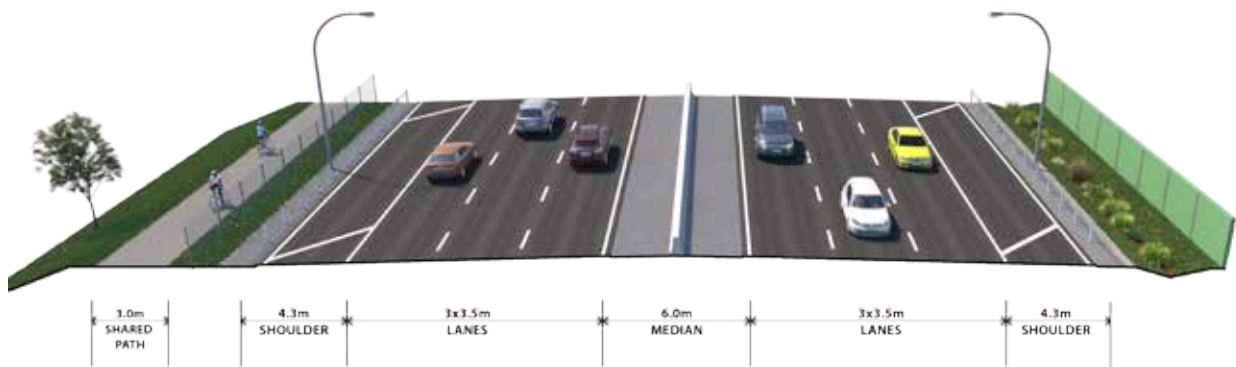
MOVING PEOPLE SMARTER

The amount of growth planned for in the south of Auckland means we need to adopt smarter ways of moving people and freight. We also need to take account of what the motorway is like further north and what the existing constraints are.

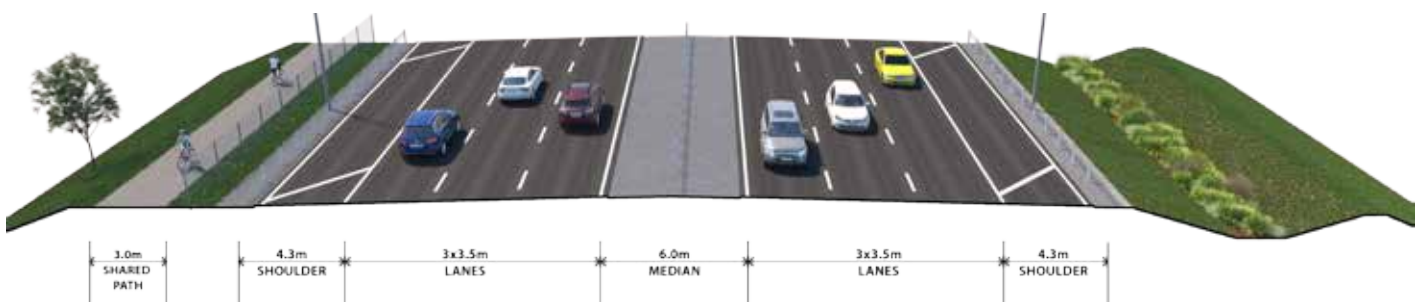
Intelligent Transport Systems, such as lane control signals and variable speed limits, could be used to manage congestion and motorway access. Along with CCTV, these systems help improve incident detection and management capability.

We are also considering the way in which additional lanes could be used to more efficiently move people and goods. This could be done by reserving lanes for specific customers such as trucks carrying freight, or vehicles carrying more than one person. Wider shoulders could also be used by emergency vehicles.

We are considering different options for how this additional road space could be used and would like to hear your views.



In urban areas, the motorway could have a concrete median for increased safety and noise walls to shield nearby properties, where needed.



In rural areas, the motorway could have a wire rope median and planted areas (swales) to manage water runoff and filter pollutants.

OPEN DAYS

Come along to find out more and give feedback on the proposed improvements to SH1.

Wednesday 23 August, 4pm to 8pm

Drury Community Hall, 10 Tui Street, Drury

Saturday 26 August, 10am to 2pm

Pukekohe Town Hall, Corner Massey Ave and Edinburgh Street, Pukekohe

Tuesday 29 August, 3pm to 7pm

Ramarama School, 126 Ararimu Road, Ramarama



NEXT STEPS: HAVE YOUR SAY

From Monday 14 August to Sunday 17 September, we are seeking community feedback on proposed improvements for SH1, between Papakura and Bombay. Your feedback will help us identify the issues to be considered as we progress the project further.

You can provide us with your feedback in several ways:

- Complete a feedback form and leave it in the feedback box at one of our open days, or post it back to us using the freepost envelope provided
- Provide your feedback online at www.nzta.govt.nz/p2b
- Phone or email the team on 0800 SH1 P2B (0800 741 722) or p2b@nzta.govt.nz

Please make sure your feedback gets to us by 5pm on Sunday 17 September.

WHAT HAPPENS NEXT?

Your feedback will help us identify the issues to be considered as we progress the project further.

PROJECT PROGRESS AND NEXT STEPS



WHAT BENEFITS COULD THIS PROJECT PROVIDE?

- Reinforces the Southern Motorway's function to support national and regional economic growth.
- Supports the growth of communities in the south by enabling better access to places of work, education, and leisure.
- Supports the liveability of communities in the south by improving walking and cycling facilities and enabling the local road network to function effectively.

