

## Biosecurity Local Board General Update

Month/Year: 14<sup>th</sup> July 14<sup>th</sup> September 2017

Officers name: Jeremy Warden

### Hauraki Gulf Controlled Area- Great Barrier Island

#### Plague Skink Shoal Bay Wharf

- A fourteen day trap run at the eastern, western and south-western containment (C Grid) fence boundary lines, have not picked up any plague skinks to date in the areas that we have identified to finish up the containment fencing. This trapping cycle was completed 18<sup>th</sup> September.
- A total of 893 traps were installed, totalling 12,502 trap nights as part of this effort.
- 21 plague skinks and 70 indigenous skinks were captured. Locations of captured plague skinks are below in Figure 1.
- Trapping grids were supported with experimental drift fencing to enhance capture rates. These are a commonly used tool internationally with tried and tested results.
- Plague skinks were picked up along the roadside approximately 50 metres beyond their previously known range, but no further detections were made beyond this.
- 50m of containment fence has now run from the beehives to the top corner of the QE11 block.

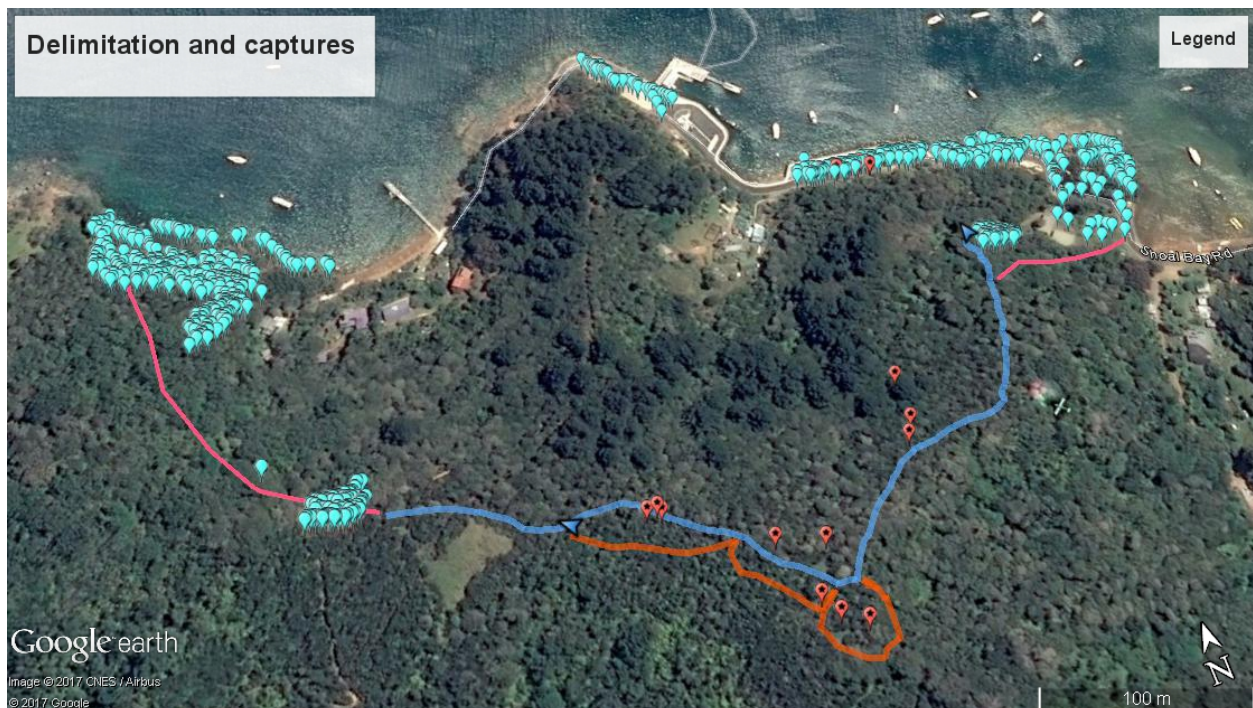


Fig 1. Delimitation effort over 14 day period during August /September 2017. (Blue line = installed containment fencing, orange line = installed external boundary fencing, aqua dots = trap locations, red dots = plague skink captures throughout 2017 at operational area boundaries)

#### Argentine & Darwin's ants

Carried out a visual search for Darwin's ants at Bruce and Cilla White's (18/7/17), Mohunga to gauge the effectiveness of the Seasons control. Identified a large nest of Darwin's ants in the rear plastic house. Treated the entire Plastic house with kas sand and Biffant. A single Darwin's ant was found in the plastic house at the front of the property. The entire house was treated with kas sand and Biffant.

Looked at the two previously defined areas of Darwin's ants established with the seasons monitoring and treat vicinity with kas sand and Bifant as a precaution.

Technical advisory group Meeting 1<sup>st</sup> September to review the seasons work and plan for 2017/18.

### **Argentine ant and Plague skink surveillance**



Plague Skink showing distinctive diamond shaped single frontoparietal head scale

#### Plague Skink Interception

A resident of Garden Road was bringing a vehicle back on the barge on Tuesday 29<sup>th</sup> August with gear stowed in it. Part way into the trip he noticed a skink sitting on top of a life jacket stowed in a box which he managed to capture. He suspected that it was a Plague Skink and was worried there may have been more escaped into the vehicle. He had the foresight to postpone unloading the vehicle until we had identified the animal captured and searched the car. The animal was identified as a Plague skink so as planned we took the vehicle back down to the Shoal Bay Wharf Plague Skink site and pulled everything removable out, examined and repacked goods into the boot section. Nothing further was found. We then placed a large number of max sticky pads throughout the vehicle. The resident did not need to use the vehicle for a while so left it closed up with the Max pads in place. No further captures.

### **Mulberry Grove & Okiwi Community Pest coordinators**

#### Mulberry Grove

Over the past two months Envirokiwi staff Sofia and Juliane took turns at checking the traps. There has been a drop in the rats being caught over the last couple of months which could be attributed to the following reasons:

- Mulberry Grove School involvement – they are checking the traps along the waterfront and school area and will have numbers in their tally (*Jo says if this project continues we can gather this information for reporting*)
- Juliane missed some weeks of checking the traps due to medical reasons
- There seems to be less rats active during this time of year community members I managed to contact also all said there had been little or no rat activity
- Different bait (mixture of grains and seeds). Whilst this seems to stay in the trap without being eaten by small bugs (which is what happens in the majority of traps with peanut butter) the bait may not be as desirable for the rats.

Juliane attended a meeting at MG School with Ally (Principal), Matt and Shanti to discuss the involvement of the students checking traps (along the water front area of MG) and reporting their finds.

**Weed Control**

Total Control

Grid Madeira vine site on Motu Kaikoura 18/7/2017. Locate and remove one propagule from the stream and two from amongst the foreshore flax.

Visit Paul and Anne Marie Mcglashins at Owhiti Bay to carry Salvinia control. Large number of small plants removed from the pond

**West Coast Weed Surveillance**

Coastal Weed Surveillance:

A grid search has occurred west of Gibbs Landing out towards Tryphena point; several lantana and smilax were found. One cestrum was also found which needs identification.

**Wharf and Airport Mustelid and Rodent Pest Surveillance (July)**

- Port Fitzroy –4% Bait take, 0 rats caught in DOC200, 0x Wax tag=Rat
- Tryphena- 17% Bait take 1x Ship Rat caught in DOC200. 0x Wax tag=Rat
- Whangaparapara- 36% bait take 1 x Ship Rat in DOC200's. 3x Wax tag=Rat
- Okupu -100% bait take. 0 x Rat caught in DOC200, 0x wax tag=Rat
- Claris airfield environment – 13% bait take
- Claris residential-6% bait take

**Bait Stations at Transfer Sites (July)**

- Southern Stations- Medlands 50%, Okupu 0%, Puriri bay 50%, Mulberry grove 20%
- Northern Stations- Motairehe 0%, Okiwi 0% & Kawa 100%

**Private Jetties & Boat Ramps**

Location	DOC200	Bait Station	Wax tag
Yates	0x Rat	0%	0
Jetty	0x Rat	0%	0
Pickards	0x Rat	0%	0
Stellins	0x Rat	0%	0
Whangapara Jetty	0x Rat	0%	0
Okupu Boat Ramp	0x Rat	60%	0
Mulberry Grove Boat Ramp	0x Rat	0	0
Puriri Bay Boat Ramp	1x Rat	100%	1

Conclusion: No new species of pest animals detected, bait consumption (Diphacinone) is low in most areas.

**Wharf and Airport Mustelid and Rodent Pest Surveillance (August)**

- Port Fitzroy –6% Bait take, 0 rats caught in DOC200, 3x Wax tag=Rat
- Tryphena- 1% Bait take 0x Ship Rat caught in DOC200. 0x Wax tag=Rat
- Whangaparapara- 58% bait take 3 x Ship Rat in DOC200's. 0x Wax tag=Rat
- Okupu -100% bait take. 0 x Rat caught in DOC200, 0x wax tag=Rat

- Claris airfield environment – 27% bait take
- Claris residential-7.6% bait take

### Bait Stations at Transfer Sites (August)

- Southern Stations- Medlands 0%, Okupu 100%, Puriri bay 0%, Mulberry grove 0%
- Northern Stations- Motairehe 0%, Okiwi 0% & Kawa 100%

### Private Jetties & Boat Ramps

Location	DOC200	Bait Station	Wax tag
Yates	0x Rat	0%	0
Jetty	0x Rat	0%	0
Pickards	0x Rat	0%	0
Stellins	0x Rat	0%	0
Whangapara Jetty	0x Rat	0%	0
Okupu Boat Ramp	0x Rat	60%	0
Mulberry Grove Boat Ramp	0x Rat	0	0
Puriri Bay Boat Ramp	0x Rat	100%	0

Conclusion: No new species of pest animals detected, bait consumption (Diphacinone) is low in most areas and minimal interceptions of rats.

### Rabbits

First pindone carrots laid 14<sup>th</sup> July with the second application laid 17<sup>th</sup> July

Rabbit monitoring sheet June Pre Pindone control Okiwi Airfield				Name: Brett Oreilly				
Date	start time	Finish time	Site	Time taken	KM travelled	# rabbits	# cats	# pateke
25/06/2017			Okiwi airfield	9	1.2	93		2
26/06/2017			Okiwi airfield	9	1.2	99		2
27/06/2017			Okiwi airfield	10	1.2	107		5
28/06/2017			Okiwi airfield	10	1.2	74		5

**Average =93.25**

Rabbit monitoring sheet August Post Pindone control Okiwi Airfield				Name: Brett Oreilly				
Date	start time	Finish time	Site	Time taken	KM travelled	# rabbits	# cats	# pateke
12/08/2017			Okiwi airfield	14	1.2	34		3
13/08/2017			Okiwi airfield	12	1.2	42		6
15/08/2017			Okiwi airfield	13	1.2	46		3
17/08/2017			Okiwi airfield	12	1.2	37		1

**Average =39.75**

**= 57.4% Decrease**

### Awana Cat Trapping.

6 Cats have been caught in Awana with trapping ongoing

## **Good Nature A24 Traps**

### A24 Trap Relocation (as reported by Judy Gilbert)

Following discussion with Darren Peters, DoC, and Nick Graham from Goodnature, it was decided that a reduction from the current 50 metre spacing between the A24s to 25 metres would be worth trialling to see if this better managed kiore, a species with a significantly smaller home range than a ship rat. The A24's were also mounted lower on the tree to make access by animals easier.

The rat catches from the two trapping lines opened in the Big Windy Hill area between April and June this year had shown that more than 50% were kiore and that these more cautious animals may be the reason that the rat tracking tunnels have remained consistently higher.

The new site placement would also bring the space between the A24s into alignment with the rest of the Sanctuary's 25m metres between each trap or bait stations.

The moving of traps was planned to coincide with the ALP and gas cylinder six monthly replacement due in August.

On 29<sup>th</sup> and 30<sup>th</sup> August the Windy Hill field team worked alongside Nick Graham and Chris Dwan from Goodnature to move 124 of the A24 units from the coastal side of the project area and interspersed these with the units on the inland area of the project at 25 metre spacing. At the same time, the existing rat trapping lines were re-established at 50m spacing in the area cleared of A24s as a comparison with the previously placed A24s. These will be checked in the third week of September and then on monthly.

The existing rat tracking tunnel lines are reasonably spread between the A24 and the standard rat trapping areas and should provide sufficient data to measure the outcomes from the changed regimes. Rat tracking tunnel monitoring will be undertaken in September and November. By late this year we should get some indication of how well the repositioned A24s are doing stand alone and compared to standard trapping.

## **Rodent Dog Surveillance**

Carry out rodent surveillance at Glen Fern sanctuary to identify Kiore hot spots