

Introduction

Welcome to the Integrated Area Plan for Manurewa, Takanini and Papakura.

This plan outlines an urban vision for these areas over the next 30 years. It sets out the key ideas, desired outcomes and supporting transformative actions that will achieve this vision for the corridor and the three centres of Manurewa, Takanini and Papakura. This plan anticipates residential and business growth in the town centres of Manurewa, Takanini and Papakura and outlines how this is to be supported by investment in physical and social infrastructure, including open space, community facilities, and transport. It plans to support urban growth while recognising and building on the area's youthful population, unique cultural and historical values and landscapes. It is a living document that will continue to evolve over time, as new opportunities and challenges arise.

This plan has been developed collaboratively by the council's Plans and Places Department, Arts Community and Events Department and The Southern Initiative on behalf of both the Manurewa and Papakura Local Boards, using an empowered community approach. It is built with the support, advice and direction from the local residents, community-based interest groups, and our partners and stakeholders in Manurewa, Takanini and Papakura.

Navigating the plan

Navigating the plan	
Mihi and Foreword.....	4-7
Context	
The Story of the South.....	8-9
Planning for the future...	10-11
The Focus Area.....	12-13
The role of the centres....	14-15
The Plan	
Concepts.....	16-17
Talking to the community.....	18-19
What we heard.....	20-21
Outcomes for:	
The corridor.....	22-23
Manurewa.....	24-25
Takanini.....	26-27
Papakura.....	28-29
Map of projects	
Corridor.....	30-31
Manurewa.....	32-33
Takanini.....	34-35
Papakura.....	36-37
Delivery Framework	
Project delivery and implementation.....	40-41
Keeping in touch.....	42-43

Mihi

Mihi

Tēnā kia hōia e au taku waka mā ngā tai mihi o ata e uru ake ai au mā te awa o Tāmaki ki te ōnga o Tainui waka i Otāhuhu.	Let this vessel that carries my greetings travel by way of the Tāmaki River to the landing place of Tainui canoe at Otāhuhu.
I reira ka toia aku mihi ki te uru ki te Pōkaki-Tapu-a- Poutōkeka, i reira ko te Pā i Māngere.	There, let my salutations be borne across the isthmus to the Pōkaki lagoon and the community of Māngere.
E hoe aku mihi mā te Mānukanuka a Hoturoa ki te kōrae o te Kōiti o Awhitu.	Paddling the Manukau Harbour we follow the Awhitu Peninsula to the headland.
I kona ka rere taku haere mā te ākau ki te puaha o Waikato, te awa tukukiri o ngā tōpuna, Waikato Taniwharau, he piko he taniwha.	From there we fly down coast to the Waikato river mouth, sacred waters of our forebears.
Ka hikoi anō aku mihi mā te taha whakararo mā Maoro ki Waiuku ki Mātukureira kei kona ko ngā Pā o Tāhuna me Reretewhioi.	Coming ashore on the Northern side at Maoro we head inland to Waiuku and Mātukureira, there too is the Pā at Tāhuna and Reretewhioi.
Ka aro whakarunga au kia tau atu ki Pukekohe.	Heading southward I come to Pukekohe.
Ka tahuri te haere a taku reo ki te ao o te tonga e whāriki atu rā mā runga i ngā hiwi, kia taka atu au ki Te Paina, ki te Pou o Mangatāwhiri.	My words turn to follow the ancient ridgelines along the Southern boundary, dropping down into Mercer and Te Pou o Mangatāwhiri.
Mātika tonu aku mihi ki a koe Kaiāua te whākana atu rā o whatu mā Tikapa Moana ki te maunga tapu o Moehau.	My greetings reach you at Kaiāua who gaze across Tikapa Moana to the sacred mountain, Moehau.
Ka kauhoetia e aku kōrero te moana ki Maraetai kia hoki ake au ki uta ki Ohuiarangi, heteri mā Pakuranga.	Taking to the sea, my remarks travel to Maraetai and then to Ohuiarangi, sentinel to Pakuranga.
I reira ka hoki whakaroto ake anō au i te awa o Tāmaki ma te taha whakarunga ki te Puke o Taramainuku, kei kona ko Ōtara.	There we follow again the Tāmaki River to Te Puke o Taramainuku, Ōtara resides there.
Katahi au ka toro atu ki te Manurewa a Tamapohore, kia whakatau aku mihi mutunga ki runga o Pukekiwiriiki kei raro ko Papakura ki kona au ka whakatau.	From here I reach for Manurewa until my greetings come to rest on Pukekiwiriiki below lies Papakura and there I rest.

Combined message from Manurewa and Papakura Local Boards

We are delighted to present the Integrated Area Plan for Manurewa, Takanini and Papakura. Both the Manurewa and Papakura Local Boards have sponsored the process and have worked closely with the planning project team, the wider council group and mana whenua in putting the plan together. We have had some great conversations with you at various events and have listened to feedback from across our diverse communities. This has really helped us shape the plan's content and proposed actions.

The plan reinforces the corridor's role as the gateway to the "great" South. It will guide how the corridor will grow and change over the next 30 years while protecting and improving its best qualities. It aligns current and future opportunities with actual projects to strengthen both the corridor as a whole and the three unique centres of Manurewa, Takanini and Papakura.

The corridor and its surrounds have many distinct attributes and through the plan we intend to take advantage of these. For example, our area is home to culturally diverse and vibrant communities, economic hubs, a high number of young people and valuable natural assets. The plan will build on many of our area's strengths to create and improve all our local places and spaces which showcase what the area has to offer.

Your feedback has shown our centres must ultimately be a place for people. Our relationships with mana whenua will be important to achieving our collective goals and aspirations for Manurewa, Takanini and Papakura. This plan continues our move towards supporting community-led initiatives and building partnerships so we can implement the plan's proposed actions to realise the vision for our area together.

Thank you to everyone who has contributed to the area plan to ensure that we make the Manurewa, Takanini and Papakura centres an even better place to live, where you feel a sense of belonging and where everyone has an opportunity to be active and involved.

The story of the South

South Auckland is home to almost 20 per cent of Auckland's population and is one of the most youthful and culturally diverse communities within the region and in New Zealand. There is a magnitude of projects already underway in the area and a large number of stakeholders working in the space. One of the drivers within this area is The Southern Initiative, a significant place-based initiative setup through The Auckland Plan.

The purpose of The Southern Initiative is to plan and deliver a long-term programme of co-ordinated investment to boost social, economic conditions and education opportunities in south Auckland. The Manurewa and Papakura Local Board areas sit within the Southern Initiative target area. This plan supports the delivery of The Southern Initiative by planning for land use and infrastructure, encouraging employment opportunities, and proposing key social infrastructure provisions.

Key statistics for the Manurewa and Papakura local board areas.

1. 10% of Auckland's population live in Manurewa and Papakura
2. 16% of Auckland's Pacific population reside in Manurewa and Papakura
3. 21% of all Maori living in Auckland reside in Manurewa and Papakura
4. 29.8 median age in Manurewa, one of the youngest local board areas
5. 25% of Papakura's population is 14 years and under
6. The population of the two local board areas is expected to grow by approximately 26,000 - 40,000 people over the next 10 years
7. 20% of Papakura's residents and 34% of Manurewa's residents were born overseas
8. The employment sectors with the biggest increase in number of jobs between 2006-2023 are construction and retail trade in Papakura. In Manurewa these are rental, hiring and real estate services followed by transport, postal and warehousing
9. 5% of the local population speak Te Reo, which is higher than the rest of the Auckland region

Planning for the Future

Auckland's population is forecast to grow by one million residents over the next 30 years and it is anticipated that the south will grow by an additional 160,000 people within that timeframe.

The Manurewa-Takanini-Papakura Spatial Priority Area is one of 9 Spatial Priority Areas committed to in Auckland Council's Long Term Plan 2012-2022. Defining Spatial Priority Areas has ensured the council's limited resources have been and will continue to be put into areas that will enable multiple outcomes and align with the Auckland Plan's Development Strategy and six transformational shifts. Spatial Priority Area projects strive to achieve transformational change within an area or project; they are a step change in the way that the council as an organisation works.

This area plan will help shape the growth of the Manurewa, Takanini and Papakura Spatial Priority Area, as well as the Great South Road and railway corridor. By supporting transformational change within the area through the empowered communities approach, the corridor and centres have the potential to grow as safe, attractive and vibrant business and residential destinations.

The Spatial Priority Areas represent the new way of working where the whole of the council group works in an integrated way within the identified area. The area plan while influenced by various strategic policies and planning documents, identifies short, medium and long term actions for the area in addition to existing plans and projects currently being undertaken by the Manurewa and Papakura Local Boards for town centre / commercial revitalisation.

Focus Area

The Integrated Area Plan contains three distinct centres with different attributes and characteristics, the established town centre of Manurewa, the emerging town centre of Takanini and the emerging metropolitan centre of Papakura. These three centres are defined by three main movement corridors of Great South Road, State Highway 1 and the railway corridor stretching from Homai Station in the north to Papakura Station in the South.

While the Area Plan focuses on these three centres and the corridor, it also considers the urban context of its surroundings. The focus area is depicted in a dotted line in the figure below.

[Map of SPA included]

The role of the Centres

The Integrated Area Plan anticipates that the centres of Manurewa, Takanini and Papakura will be the 'hubs' where most of the residential and employment growth will be focused. The actions identified in the plan for the Corridor aim to improve connectivity between the three centres and enable them to reach their potential. They are places where the council can apply the most influence for positive change.

The Area Plan also recognises the importance of linkages between local and town centres to the metropolitan area of Manukau that support opportunities for employment and business, and attracting visitors to the area. However, it is acknowledged that we cannot focus on the corridor alone without looking at the wider context and the growth pressure for new housing to be delivered in surrounding neighbourhoods, along with the potential for new retail centres to be developed.

Manurewa

This plan builds on the town centre revitalisation work already underway in Manurewa by identifying the various public and private sector agencies that can activate key redevelopment opportunities, by improving pedestrian connections between the library, Great South Road, Southmall and the train station. The plan identifies opportunities to create public spaces for people to socialise, play and perform.

Takanini

The Takanini town centre offers strong retail opportunities, good parks and community spaces (i.e. Bruce Pullman Park) and a central location between Manurewa and Papakura. It can complement the centres of Manurewa and Papakura and could be supported by a new train station at Tironui and safer rail crossings. There is also an opportunity for better connections to Bruce Pullman Park and the coast.

Papakura

Papakura has a traditional form developed through a strong retail core along Great South Road. As the largest centre within the corridor it has an established community/civic services base and forms the gateway to the Hunua Ranges where a

range of leisure and recreation spaces/activities are offered. The plan seeks to continue to build on the revitalisation work already underway to transition Papakura into a thriving metropolitan centre. There is an opportunity to achieve this by planning for a civic heart, investigating opportunities for shared spaces along Broadway, building on its good transport access, growing the local tourism industry and identifying potential development sites to accommodate residential growth.

Key Ideas

Five 'key ideas' have underpinned the actions of this Area Plan. These key ideas are essential to bring about the transformation that is needed and have shaped the actions selected to respond to the challenges and opportunities facing the area. They were developed through working collaboratively with the Manurewa and Papakura Local Boards, Mana Whenua, Arts Community and Events, the Southern Initiative, stakeholder engagement and through engagement with the community, who told us what is important to help transform Manurewa, Takanini and Papakura into an area where people will want to continue to live, work and play.

Protecting our future

The opportunities created by change that will happen in the Great South Road corridor and the three centres need to be embraced through protecting the features that are special, and building on them for the future.

Love your centre

The vision for the Manurewa, Takanini and Papakura centres is to grow their distinct identities and form the heart of their communities where opportunities for people to live, work and play are provided.

Celebrate the story

As people arrive they make their own mark on this place. The stories of Manurewa, Takanini, Papakura and the Great South Road corridor have enriched and strengthened the area and continue to shape the identity of the area in their own way. The area's true potential as a culturally and historically diverse area is yet to be fully celebrated.

Make way for the people

People will be put first, reflected in a welcoming and safe place with strong and inclusive communities. This includes how we get around as well as making sure there are a range of work and learning opportunities to meet the needs of people of all ages and abilities in the area.

A voice for Youth

The large population of youth in these centres provides a sense of youthful energy, liveliness and a strong spirit of change which are the foundations of our future. Designing spaces and places in response to the needs of youth, through empowerment, promotion of local talent, providing opportunities for healthy growth will encourage the centres to excel and will be key to achieving the outcomes that people are seeking.

A New Approach

A key focus of the Integrated Area Plan was to explore options for potential new approaches and to outreach to a range of age groups, ethnicities and communities in Manurewa- Takanini- Papakura and to empower sections of the community namely Māori, Pasifika and young people who have never been involved in an Auckland Council consultation/engagement process to help shape the long term vision and action plan.

The timing also enabled an empowered communities approach to be embedded in the area plan as an opportunity to develop a new kind of area plan and to work collectively with our communities and mana whenua. This provided for genuine up-front engagement, recognising the diversity of communities. It has also assisted the two local boards to advocate for joint outcomes and to work together across the Spatial Priority Area.

In addition to the use of more conventional consultation and engagement techniques, innovative approaches have been used to engage local communities and encourage input into the project.

The approach was to engage people in their communities and at their celebrations, communicate with simplicity, make it easy to participate, invite input in different ways, make it highly visible and make it fun and entertaining.

Also different approaches were tried to make it easier for different communities to engage including the Share Your Ideas digital platform to make it easier for people to contribute to the ideas for making these places better.

All feedback was considered and the engagement gave us a rich mosaic of ideas to develop the Area Plan and the transformative actions to deliver on its desired outcomes.

Talking to the Community

The council's innovative approach to engagement encouraged the community in Manurewa, Takanini and Papakura to explore the future of their centres, and of the corridor.

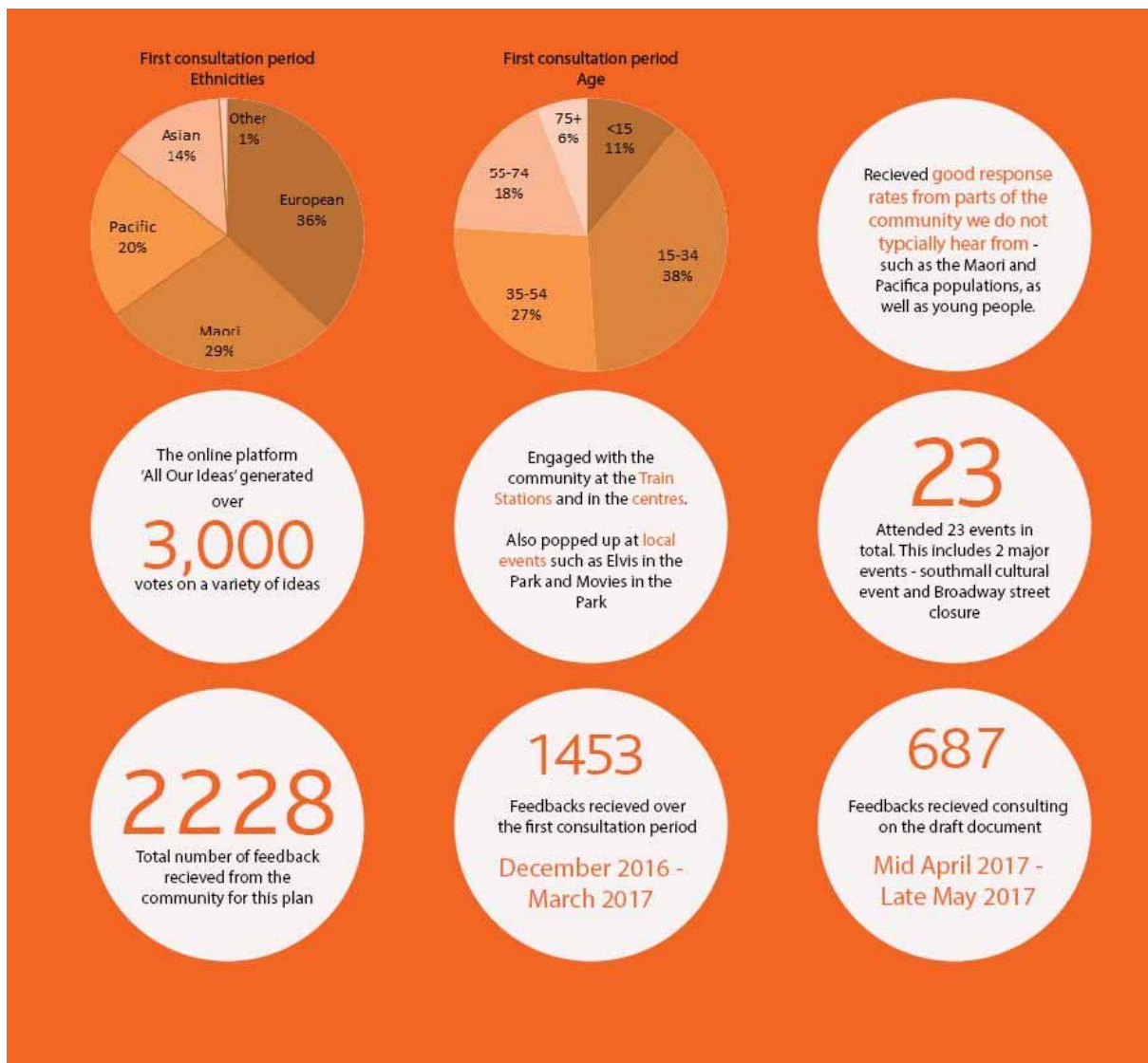
As part of the development of the area plan, a range of events and engagements were delivered in partnership with Arts, Community and Events to a wide range of communities within the three centres. Orange branding was created for the engagement to be both distinctive and to act as a point of reference for the community. This branding was very successful and was carried through for subsequent work in the development and finalisation of this plan.

Some highlights of the engagement included events such as the 'Streets to Places' event in Papakura and 'Rewa- Love our Centre' event in Southmall Shopping Centre, Manurewa. In addition engagement was carried out at local community events and by visiting the shopping malls, train stations and other hubs to engage people.

An 'All Our Ideas' web platform was created and championed by the Manurewa Youth Council. Starting with 20 seed ideas that came from the draft plan, over 3171 votes were recorded and 17 new ideas generated during the engagement period.

Collaboration with key stakeholders, mana whenua, mataawaka, central and local government agencies, infrastructure providers and business associations continued throughout the development of the Area Plan. This determined the capacity and opportunities to inform what would be important for the future of the areas.

A significant number of feedbacks (over 5000) were received and the following diagram provides a snapshot of these results.



What we heard

Community engagement was done in two rounds. From December 2016 to March 2017, the council undertook pop-up engagements and attended festivals and events to receive feedback on the top priorities for the area. This engagement turned ideas into concepts.

During April to May 2017 for a 6 week period, the council went back to the community, back to places that they visited and engaged with the community on a draft plan with the five key concepts supported by groupings of suggested actions as identified for each of the three centres.

Some of the most popular ideas the community wanted to see, or changes about the area are shown here, and whilst they do not capture all the feedbacks received they have helped to inform the formation of the transformative actions.



The following transformative actions have been identified for the corridor and each centre have been identified through the engagement process and for their ability to progressively unlock the potential of the area. They will influence the change that the community want to see over the next three to ten years and beyond in this area and achieve the outcomes and ‘transformational shifts’ of the Auckland Plan, and the local boards’ vision for liveable growth over the next 30 years.

Outcomes for the Corridor

Spine of the South

To reinforce the corridor’s role as a place for business, a place to showcase its natural environment and as an integrated regional transport hub

The outcome for the Great South Road corridor is to ensure that Manurewa, Takanini and Papakura are developed in a manner that complement each other, support local businesses to thrive and provide the opportunities for locals to live, work and play in these areas.

This plan supports Auckland Council’s region-wide initiatives such as The Southern Initiative, Homelessness Action Plan and Youth Connections that together will have

a significant impact on the vitality of the Manurewa, Takanini and Papakura communities.

There are also a number of transport initiatives happening in the area over the next three to ten years. These include Popes Road and Porchester Road intersection upgrades, the Takanini Interchange upgrades, and the Mill Road Corridor Project. This plan continues to support and advocate for these transport initiatives lead by Auckland Transport and/or the New Zealand Transport Agency.

People want to see change, in their urban environment and to strengthen communities.

KEY

Timeframes	Funding Status	Priority
Short term (the next three years)	Funded	High
Medium term (the next four to ten years)	Unfunded	Medium
Long term (10+ years)		Low
Ongoing		

Abbreviations of Delivery Partners

AC	Auckland Council
ATEED	Auckland Tourism, Events and Economic Development
AT	Auckland Transport
NZTA	New Zealand Transport Agency
TSI	The Southern Initiative

Outcomes for the Corridor (projects)

Transformative Projects in response to community feedback	Timeframe	Funding Status	Priority	Delivery Partners
Deliver the Manukau Harbour Restoration Project and Kaitiaki projects to improve how the coast, streams and riparian areas are managed in the area, including through the use of water sensitive designs	Ongoing	Funded	High	Local Boards, Infrastructure and Environmental Services (AC), Manukau Harbour Forum, local community, Watercare, Arts Community and Events (AC), Healthy Waters (AC), Iwi
Deliver and fund local community garden initiatives, pop-up	Ongoing	Funded	High	Local Boards, TSI, ATEED, Arts

activities, temporary public artworks, signature events and festivals in the area				Community and Events (AC), Arts Community and Events (AC), Local community
Develop, connect and implement a greenways network plan across both the Manurewa and Papakura Local Boards. The Greenways Plan identifies ways to improve and create walking and cycle connections, ecological corridors and links to existing sports and community facilities in the area.	Short term	Unfunded	High	Local Boards, Parks, Sports & Recreation (AC), AT, Community Facilities (AC), Healthy Waters (AC), Panuku Development Auckland,
Advocate for a shared pedestrian and cycle path along State Highway 1 with linkages to the three centres	Medium term	Unfunded	High	Local Boards, AT, NZTA, Plans & Places (AC)
Advocate for the delivery of identified projects in 'Supporting Growth – Delivery Transport Networks' Plan. This will deliver improved linkages to the three centres and new housing developments in the area.	Medium term	Unfunded	High	Local Boards, Plans & Places (AC), Private developers, AT and NZTA
Investigate ways to provide free publicly accessible Wi-Fi across the three centres	Medium term	Unfunded	High	ATEED, Local Boards, Business Associations, Chorus, Youth Councils

Outcomes for Manurewa

Revitalisation

Build on the revitalisation of the Manurewa Town Centre and support projects that align with the vision and branding of the Centre

The outcome for Manurewa is to be a thriving town centre that offers a mix of retail shopping opportunities on the main street and in Southmall. Located next to a train station and in close proximity to State Highway 1, Manurewa has the potential to grow and expand as a town centre and as a place for residents to live, work and play.

Revitalisation of the main street of Great South Road, Southmall and surrounding streets will improve the quality and amenity of the area. The Local Board together with the support of the Manurewa Business Association and with other key partners have the opportunity to make Manurewa a desirable place to live, work and play.

Outcomes for Manurewa (projects)

Transformative Projects in response to community feedback	Timeframe	Funding Status	Priority	Delivery Partners
Investigate opportunities to strengthen linkages between the Manurewa Town Centre, the Nathan Homestead and the Botanic Gardens. These could include opportunities for new crossing points, safer intersections, lighting and broader marketing of the linkages to the facilities	Short term	Partially Funded	High	AT, BID, Local Board, ATEED, Panuku Development Auckland, Community Facilities (AC), Business Associations
Undertake improvements to the water quality at Weymouth Beach	Short term	Funded	High	Infrastructure and Environmental Services (AC), Local Boards, Healthy Waters (AC), Watercare, Iwi
Implement safety improvements in and around the town centre and Manurewa train station	Short term	Funded	High	AT, Local Board, Business Associations, Arts Community and Events (AC), Arts Community and Events (AC)

Transformative Projects in response to community feedback	Timeframe	Funding Status	Priority	Delivery Partners
Redevelop Te Mahia Station and create a stronger presence and connection to Great South Road and surrounding neighbourhood	Medium term	Unfunded	High	AT, NZTA, Local Board, Plans & Places (AC), Panuku Development Auckland, Arts Community and Events (AC), Healthy Waters (AC)
Improve and upgrade Manurewa War Memorial Park including the development of a multi-use facility	Medium term	Unfunded	High	Arts Community and Events (AC), Community Facilities (AC), TSI, Local Boards, Local Community and sporting organisations, Local community, Arts Community and Events (AC)
Investigate and deliver projects that arise from the Manurewa Town Centre Revitalisation Steering Group. This could include improvements to Southmall, upgrades to public spaces, and improvement of pedestrian amenities and connections from the Manurewa Library, Southmall and the Manurewa Train Station	Medium term	Unfunded	High	Local Board, Panuku Development Auckland, Business Associations, Plans & Places (AC), Arts Community and Events (AC), Local Community, AT
Investigate and implement projects that will enhance David Nathan Park and Nathan Homestead to create a sense of local identity and pride supported through arts and culture activities. This will also include investigation of options to improve Nathan Homestead and address earthquake strengthening of the building.	Medium term	Unfunded	Medium	Arts, Community and Events (AC), Parks and Recreation (AC), Local Board, Local community, Arts Community and Events (AC), TSI
Develop projects to restore Puhinui Stream and improve its ecological quality	Short term	Unfunded	Medium	Infrastructure and Environmental Services (AC), Local Board, Healthy Waters (AC),

Transformative Projects in response to community feedback	Timeframe	Funding Status	Priority	Delivery Partners
				Watercare, Local Community, Iwi
Advocate and support growth and redevelopment in and around the town centre by activating key development sites with quality residential intensification	Medium term	Unfunded	High	Local Board, Business Associations, Plans & Places (AC), Panuku Development Auckland, Local community,
Progress the delivery of a creative space in the local board area	Medium term	Unfunded	Medium	Local Board, Arts, Community and Events (AC), TSI, Local Board Youth Advisory Panel, Business Associations, organisations that support youth/youth activities, Arts Community and Events (AC)
Investigate the possibility of a heritage trail which supports the celebration and promotion of the area's heritage and history. Bilingual interpretive signage may be a key aspect of this project.	Medium term	Unfunded	Low	Local Board, Business Associations, Arts, Community and Events (AC), Plans & Places (AC), Iwi, Local community

Outcomes for Takanini

Creating a clear identity

Support the development of Takanini as an emerging Town Centre and the creation of a new community and library hub

The outcome for Takanini is to become a centre that offers a mix of retail and community services that support both existing and new residents and communities forming in the area. Over the next three to ten years, the residential population will increase significantly. With new housing developments underway and planned, the town centre will become increasingly popular and in demand for meeting local needs.

Your community said that community safety, well-being and identity are important to a growing area. A new community and library hub will provide a focal point for Takanini and its close proximity to Bruce Pulman Park will provide a valuable asset to a new community and centre as it grows.

Outcomes for Takanini (projects)

Transformative Projects in response to community feedback	Timeframe	Funding Status	Priority	Delivery Partners
Provide and deliver a new multi-use community and library hub in Takanini	Short term	Funded	High	Arts, Community and Events (AC), Community Facilities (AC), Libraries and Information (AC), Local Board, Local community
Undertake and deliver the revitalisation of the Puhinui and Papakura Streams project, the Takanini Cascades Stormwater Convergence Corridor Project and the Takanini Stormwater Diversion Project	Short term	Funded	High	Infrastructure and Environmental Services (AC), Healthy Waters (AC), Watercare, Iwi

Identify and deliver physical improvements at the Takanini Station, which may include new CCTV, canopy, help points, tactile indicators, safety fencing and balustrades, and signage	Short term	Funded	High	Auckland Transport, NZTA
Investigate the potential for a grade separated road/rail connection at Walters Road, and Taka Street as part of the Supporting Growth Project.	Medium term	Unfunded	High	Local Board, AT, NZTA
Investigate options for streetscape improvements around Takanini town centre and along Great South Road, Walters Road roundabout and pedestrian and cycle connections to the Takanini train station. This may include new pedestrian crossings, footpath upgrades, new cycle lanes, traffic safety improvements and bus shelters.	Medium term	Unfunded	High	AT, Local Board
Investigate opportunities to deliver an improved park and ride facility at the Takanini Station	Medium term	Unfunded	High	AT, NZTA, Local Board

Investigate and develop a community safety action plan for the Takanini residential area and Bruce Pulman Park. The development of this plan will result in specific actions for further implementation.	Short term	Unfunded	High	Arts, Community and Events (AC), Local Board, TSI, NZ Police, Arts Community and Events (AC), Local community
Identify and deliver improvements to existing playgrounds and local park equipment in the area, this may include but is not limited to installation of new equipment and renewal of existing equipment such as BBQs, rubbish bins and outdoor gym/play equipment in parks and playgrounds.	Medium term	Unfunded	Medium	Parks and Recreation (AC), Local Board, Local community
Investigate options for improvements to public amenities around the Takanini town centre and train station, such as new public toilets, water fountains etc.	Medium term	Unfunded	Medium	Parks and Recreation (AC), Local Board, Local community
Investigate the feasibility of an additional train station at Tironui as part of the Supporting Growth Project	Medium term	Unfunded	Medium	AT, NZTA, Local Board

Outcomes for Papakura – 1 page

Revitalisation

Support Papakura as an emerging Metropolitan Centre and reposition the centre to enable a diversified retail, commercial, and residential offering

The outcome for Papakura is for it to transition into a metropolitan centre that can provide intensified development, growth and activities. Papakura is accessible by road and high frequency public transport like the train and bus services and is located in close proximity to a large number of existing and growing future housing areas that will bring in lots of new residents and visitors to the centre.

Papakura has the capacity and potential to provide a wide range of activities including commercial, leisure, high-density residential, tourist, cultural, community and civic services for both existing and new residents of the rapidly developing surrounding growth areas.

The revitalisation of the centre will be a catalyst for new growth in the centre and will be assisted by the activation of key sites for potential redevelopment and intensification. Higher residential densities are enabled and desirable in centres. At the same time, Papakura is close to the coastal environment, has a theatre and range of sporting and community facilities that make this place a desirable place to live, work and play.

Making improvements to the centre, increasing the profile of Papakura and providing the opportunities for a range of activities to grow is essential to making Papakura a vibrant metropolitan centre.

Outcomes for Papakura (projects)

Transformative Projects in response to community feedback	Timeframe	Funding Status	Priority	Delivery Partners
Deliver and implement the Smith's Avenue Reserve masterplan through a community led approach	Short term	Funded	High	TSI, Local community, Arts Community and Events (AC)
Investigate the feasibility and deliver projects identified by the Papakura Commercial Centre Project	Medium term	Unfunded	High	Local Board, Business Associations, AT, Plans & Places (AC), ATEED, Arts, Community and

<p>Group, which include but are not limited to:</p> <ul style="list-style-type: none"> - promote and market a shared vision for the Papakura centre - safety improvements in and around the centre and train station - streetscape improvements around Papakura centre and along Great South Road, include investigating opportunities to reconsider the role of Broadway, in order to transform Papakura into an environment that appropriately balances vehicle and pedestrian movements and - Investigate and deliver projects to better integrate Central Park with the train station and centre with improved safe linkages - partner with Youth Connections to establish volunteer centre advocates / ambassadors for the Papakura centre 				<p>Events (AC), Panuku Development Auckland</p>
<p>Investigate opportunities to enhance public access to the water's edge through pedestrian and cycle connections from key locations within the Papakura town centre to highlight its close links with the Pahurehure Inlet</p>	<p>Short term</p>	<p>Unfunded</p>	<p>High</p>	<p>Local Board, AT, Parks Sports and Recreation (AC), Local community, Iwi</p>
<p>Investigate options for the use of publically owned land at the existing Park and Ride facility at Papakura train station</p>	<p>Medium term</p>	<p>Unfunded</p>	<p>High</p>	<p>AT, NZTA, Local Board</p>

Investigate measures to manage parking more effectively in and around the Papakura town centre	Medium term	Unfunded	High	AT, Local Board
Advocate and support growth and redevelopment in and around the town centre by activating key development sites with quality residential intensification	Medium term	Unfunded	High	AT, Local Board, Business Associations, Plans & Places (AC), Panuku Development Auckland, Local community,
Investigate options for delivering an innovation hub in Papakura through strengthened partnerships with existing knowledge-based institutions to improve education, skills training, and access to employment opportunities	Medium term	Unfunded	Medium	Local Board, Business Associations, ATEED, Arts Community and Events (AC)
Create a strong local arts and cultural identity and pride supported through partnerships between the arts and civic facilities in Papakura that will cater for people of all ages, cultural experiences and level of experience	Short term	Unfunded	Low	Local Board, Business Association, Arts, Community and Events (AC), Community Facilities (AC), Local community
Reveal the story of Papakura's strong Māori and European heritage and emerging cultural identities through leveraging off the civic, community and events within the centre	Short term	Unfunded	Medium	Community Facilities (AC), Local Board, Arts, Community and Events (AC), Plans and Places (AC), Local Community, Iwi

Map of projects – Manurewa – 2 pages

Map of projects – Takanini – 2 pages

Map of projects – Papakura – 2 pages

Projects delivery and Implementation

From its inception, as the first joint local board area based plan, this plan has been developed on a collaborative basis. This represents its point of difference.

In the same way that the plan has been developed collaboratively, the approach to delivery of the actions will require collaboration with a range of agencies. Delivering the identified outcomes within a 30-year timeframe also will require a collaborative approach with the community, mana whenua, developers and key delivery partners including Auckland Council, council-controlled organisations, government agencies and private landowners all playing their part.

The plan contains a suite of projects ranging from those that require large amounts of capital investment, but which will be significant / transformational, through to those that will deliver 'quick wins' in the short term.

The Manurewa and Papakura Local Boards will play a key role in advocacy for, and strategic oversight of the area plan, along with being the lead for some projects where appropriate. In other cases the lead agency for projects will be council controlled organisations such as Auckland Transport, Watercare and Auckland Tourism Events and Economic Development, while others may be enabled through the council's empowered communities approach. This is about communities being involved in making decisions over what happens in their area, and the council fostering conditions that support this so that communities are empowered and are able to plan for their own futures.

Key to this will be the work of the Manurewa Town Centre Revitalisation Steering Group and the Papakura Commercial Centre Project Group, including The Southern Initiative and the Arts Community and Events Department at the council which will drive the delivery process at the local level.

Likewise the Te Mahia Station working group will continue to investigate, promote and implement improvements to Te Mahia train station and to the pedestrian, cycle and vehicular linkages which connect it to its immediate surroundings. This work will in turn be supported at a cross council departmental level by the Spatial Priority Governance Steering Group, membership of which comprises a number of senior council leaders and department managers.

The integrated area plan is an aspirational and enabling document, and while it does not secure the funding it does provide a platform for advocating for the implementation of the projects and initiatives listed in the area plan and ensure the area is best placed to embrace the funding that is available and to leverage off the opportunities that exist in the area as it continues to grow and develop over the next 30 years and beyond.

In order to ensure the plan is kept alive it will be monitored with regular reporting to both local boards on the progress on actions to date. In time, the plan may need to be refreshed to ensure that the implementation plan remains relevant in achieving the areas plan's vision and key moves and is responsive to future change.

Looking ahead towards implementation and partnership

The local boards have much to achieve within limited resources and while the council will look for ways to find additional investment, it will prioritise what it can do. The council will be able pursue joint outcomes and share governance across the spatial priority area. This joined up thinking is essential so we can do things in a united way for greater impact, which will in turn, help transform these communities.

The 2017 Local Board Plans are strategic documents which build on past work and include ideas which the local boards have previously heard from the community. Their purpose is to set a direction for local areas that reflect community priorities and preferences for the next three years. They guide local board activity, funding and investment decisions. They also influence local board input into regional strategies and plans, including the Auckland Plan.

This integrated area plan will also inform future reviews of the Auckland Plan and provide a sound evidence base for projects to be included in the next 10 year budget [2018-2028]. The council's 10 year plan is the main budgetary tool that determines all council and Council Controlled Organisation funding across Auckland, over a ten year period.

Looking to the future, it's now about ensuring delivery. This will involve everybody, from individuals, to community groups to departments within the council, council controlled organisations such as Panuku Development Auckland, Auckland Transport and both local boards.

This plan is therefore the catalyst for progress in the wider area, fostering a shared understanding of the issues and opportunities for medium to long-term change and development.

Staying in touch

Listening to our diverse community, mana whenua, stakeholders and the wider council family is all part of the role of local boards. These conversations have helped shape the plan's content and proposed actions. Keeping in touch to see how this plan develops should be of interest to everyone in the community.

A copy of the adopted integrated area plan can be found on Auckland Council's website aucklandcouncil.govt.nz (include link).

If you want to be kept up to date about progress of the plan, please email manurewapapakuraspa@aucklandcouncil.govt.nz. We will also be updating with progress through our regular orange newsletter which you may have spotted.

Contact your local board [inset link] and sign up for regular e-bulletins for local news and/or council news related to the area

Like the Manurewa Local Board and Papakura Local Board pages on Facebook

For more information on Manurewa Local Board Plan [adopted Oct 2017 - include link]

For more information on Papakura Local Board Plan [adopted Oct 2017 – include link]

For information on the Auckland Plan, Long Term Plan, Local Board Agreement etc. see Auckland Council's website aucklandcouncil.govt.nz [include link]