

Date: Wednesday 22 November 2017
Time: 6.00pm
Meeting Room: Whau Local Board Office
Venue: 31 Totara Avenue
New Lynn

Whau Local Board

OPEN MINUTE ITEM ATTACHMENTS

ITEM	TABLE OF CONTENTS	PAGE
9.0	Public Forum	
A.	9.1 - John Stowell	3
B.	9.2 - John Geddes	5
C.	9.3 - Tony Miguel	7

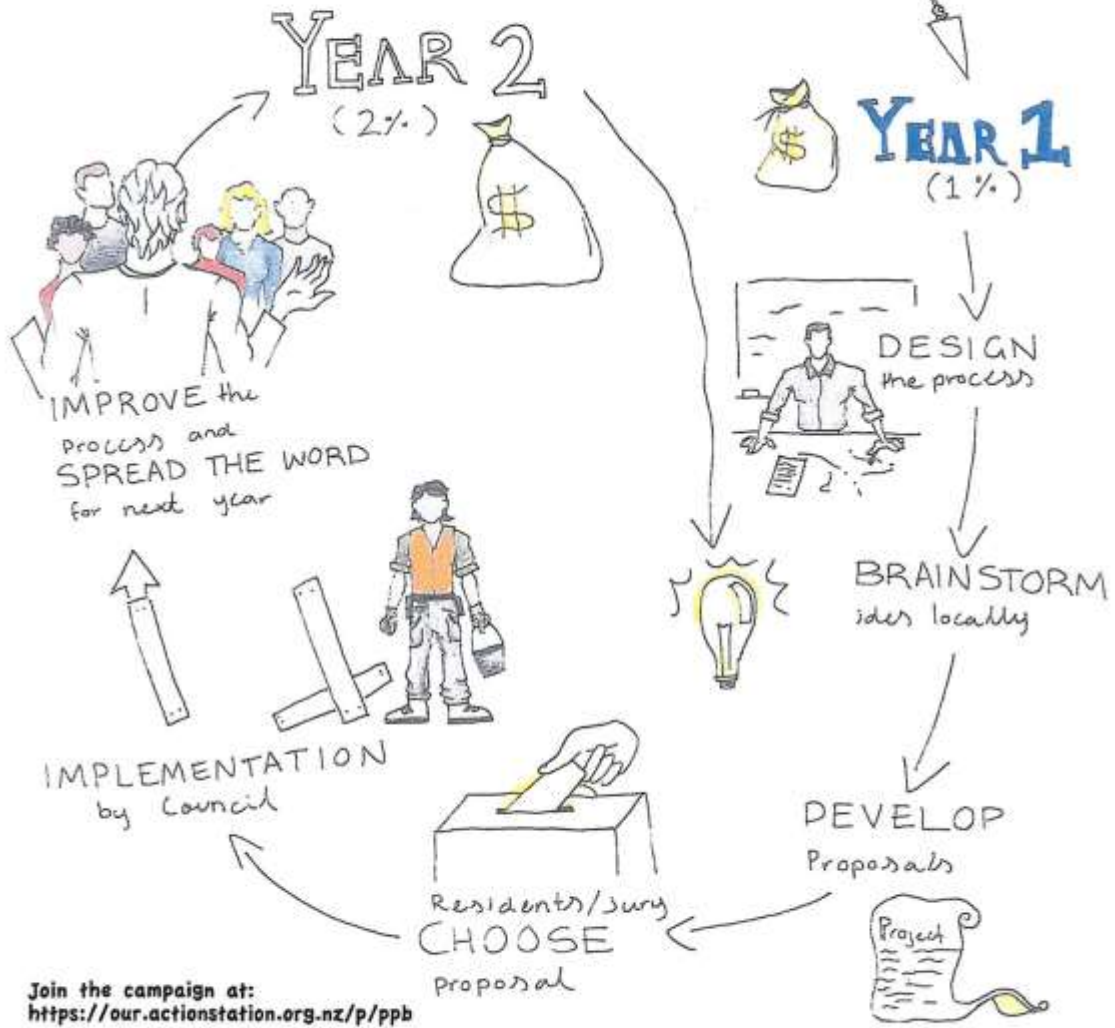
4.1

Item 9.1

Attachment A

LET'S ASK AUCKLAND COUNCIL FOR OUR BUDGET

Auckland Council
commits
annual budget



PUBLIC FORUM SUBMISSION

Subject: Participatory Budgeting – how Auckland and its Local Boards could initiate a trial.

My details:

Name: John Stowell

Organisation: Campaign for a trial of Participatory Budgeting in Auckland

<https://our.actionstation.org.nz/p/ppb>.

Blog: www.moredemocracyplease.nz.

Address: 11 Nola Road, Oratia, Auckland 0604.

Written response: It would be nice to know the Board's attitude towards the proposal.

Phone: 09 813 5683 / 022 160 3791

Email: johnst@inspire.net.nz

Main points:

Participatory budgeting (PB), besides being a bit of a mouthful, is a democratic process in which community members directly decide how to spend part of a public budget.

Why am I talking about it?

At present there is low citizen interest and participation in local politics. Only 35% of the electorate voted in the last Council elections in 2016. Citizens at large don't feel engaged in Auckland Council decisions, and the available feedback channels (such as Shape Auckland and People's Panel) do not seem to promote real discussion.

We need to find ways of engaging citizens more meaningfully in decision making. PB has been used successfully in many countries, including Australia, Canada, the US and Scotland, as a way of engaging and empowering people, and as an introduction to doing democracy differently.

What have been found to be the outcomes?

- Increased civic engagement
- More broadly representative political participation
- The emergence of new community leaders and a more politically active citizenry
- Stronger and more trusting relationships between government, organisations and citizens
- Fairer, in the sense of more democratically representative, and more effective spending.

What is being proposed?

That Auckland Council, through the Local Boards, should initiate a trial of participatory budgeting by setting aside initially a minimum of 1 percent of the council's annual capital budget to be spent as decided by citizen's juries, preferably selected by lot to maximise inclusivity.

Outcome sought: Support for the proposal, and participation, with other Local Boards and the Council, in designing and planning the process.

email: janetandrewgeddes@gmail.com

ANDREW GEDDES ARBORIST
13 Rangiwai Road
Titirangi, Auckland
Phone: 817-8904
Mobile: 027-293-1612



21 November 2017

The Chair-Person
Whau Local Board
Auckland Council
NEW LYNN

Dear Sir/Madam

Re: Exchange of 295 sq m frontage lane at Margan Reserve for the same amount of land at 5 Clinker Place

As a local, long-time resident and as a past landscape advisor to the previous Waitakere City Council, I feel that this proposal is not fully understood. The issues that should be made clear to the Board means more than just an agreement of a 'LAND SWAP'. I tried to measure the landscape quality, particularly the impact of the removal of adult *Pohutukawas* to accommodate a major roadway connecting Margan Avenue.

Previous removal of significant *Pohutukawa* trees does not go well with this additional invasion of tree removal. Before I can back this proposal I need to know exactly how much more Reserve needs to go and what plans are there to ameliorate this loss.

Meantime, I would welcome the chance to speak to the Board on Wednesday 22nd November.

With thanks in anticipation



Andrew Geddes

4.3.



Whau Coastal Walkway Environmental Trust
3/539 Mount Albert Road
Three Kings
Auckland 1042

**Deputation to Whau Local Board 22 November 2017 Whau Coastal
Walkway Environmental Trust**

Introduction

- We wish to thank the Whau Local Board and project partners for the on-going support.
- The Whau Coastal Walkway Environmental Trust was constituted in September 2014.
- The Trustees are: Iris Donoghue (Patron), Tony Miguel (Chairperson), Derek Battersby, Gilbert Brakey, Peter Chan, Sharon Davies, David Kenkel, Tim Livingstone and Greg Presland.
- Te Whau Pathway is a partnership project with the Whau and Henderson-Massey Local Boards, Auckland Transport and Council.
- Te Whau Pathway is a transformational project that will create a 12 kilometre shared path linking Green Bay, New Lynn, Kelston, Glendene and Te Atatu in various stages over the next five years, at an estimated cost of nearly \$65.6 million, delivered as a community/council partnership. Approximately 65%, by length, of the pathway is in the Whau Local Board area.
- The Trust has already raised nearly \$1.8 million since March 2015, which together with the contributions from the Whau and Henderson-Massey Local Boards, has enabled the construction of the first stage comprising 1.7 kilometres at Archibald Park, Ken Maunder Park, McLeod Park and Olympic Park.
- Works planned for 2017/18 include: Roberts Field, Queen Mary, Rizal, Tiroroa Esplanade pathways and the Archibald Park pontoon (subject to funding).

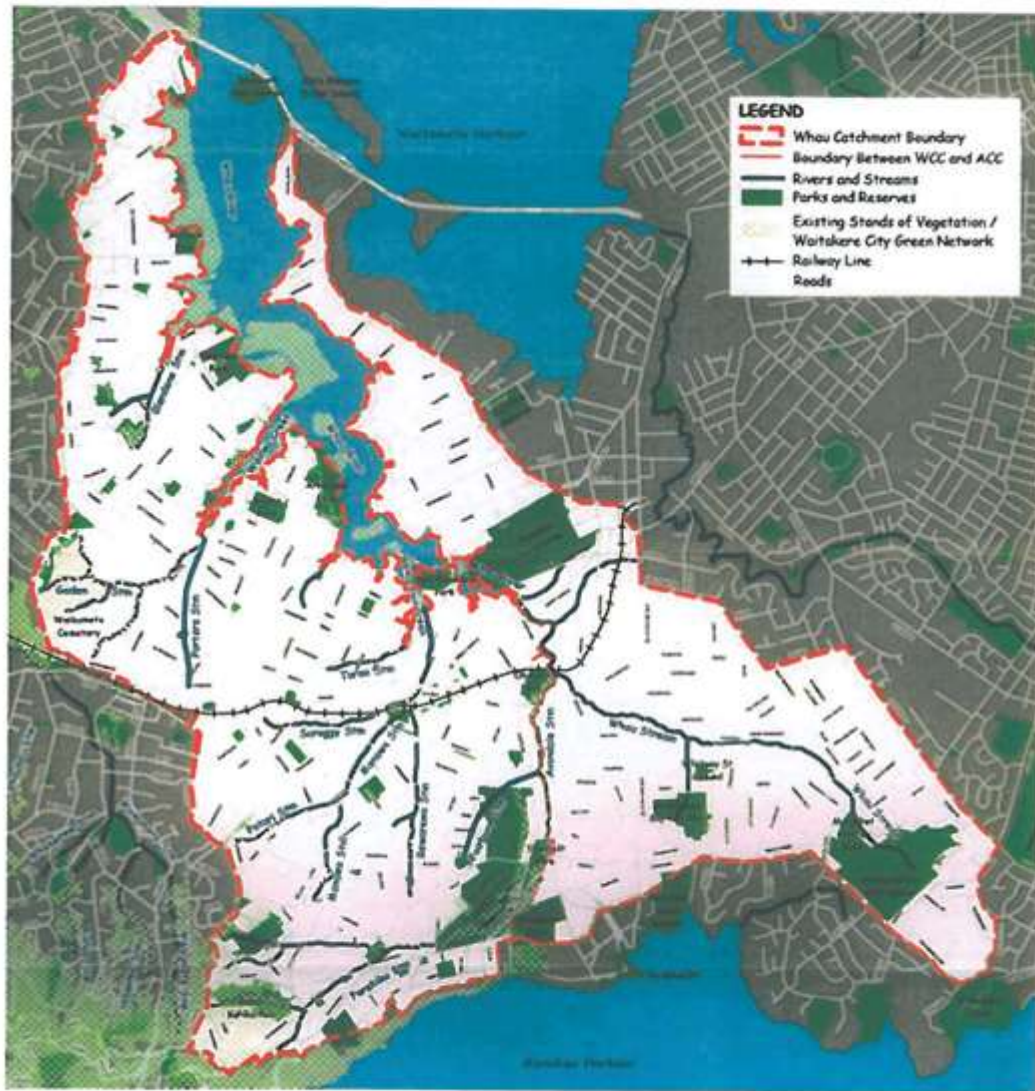
Our Request

1. *Your support for the project through the LTP process for capital and operating costs.*
 - It is essential that the project is included as a line item in the LTP, to ensure that the next stages are constructed and enable funding applications to NZTA and other agencies. We have had clear signals that other funders need Council's commitment to the project before future funding applications can be considered.
 - The current Benefit Cost ratio is 2.4. We are working with our partners to reduce costs.



2. *The participation of the Whau Local Board in the proposed Environmental Restoration Action Plan for the Whau River Catchment. We request that a Board member be nominated to commence discussions on the Action Plan and report back to the Board.*
- The Environmental Restoration Action Plan for the Whau River Catchment is plan for the integrated environmental restoration of the Whau River Catchment which includes:
 - Defining the environmental problems and restoration opportunities.
 - Prioritising the actions.
 - Jointly developing the Action Plan.
 - Coordinating the implementation and monitoring.
 - Next steps in developing the Action Plan:
 - Discuss with stakeholders if they wish to be involved, their role and possible contribution.
 - Develop the Terms of Reference, scope of the project in partnership with interested stakeholders.
 - Formalise the participation.
 - Commence gathering information on: activities and programmes already under way, and sources of environmental information.
 - Investigate sources of funding.
 - Develop a resourcing plan and budget.
 - Investigate how data can be captured and managed, preferably in a Geographical Information System (GIS) database.
 - Investigate possible Decision Support Systems or modelling tools; and cloud based access for GIS.

WHAU CENTRAL HARBOR
ENVIRONMENTAL TRUST



Whau River Catchment

