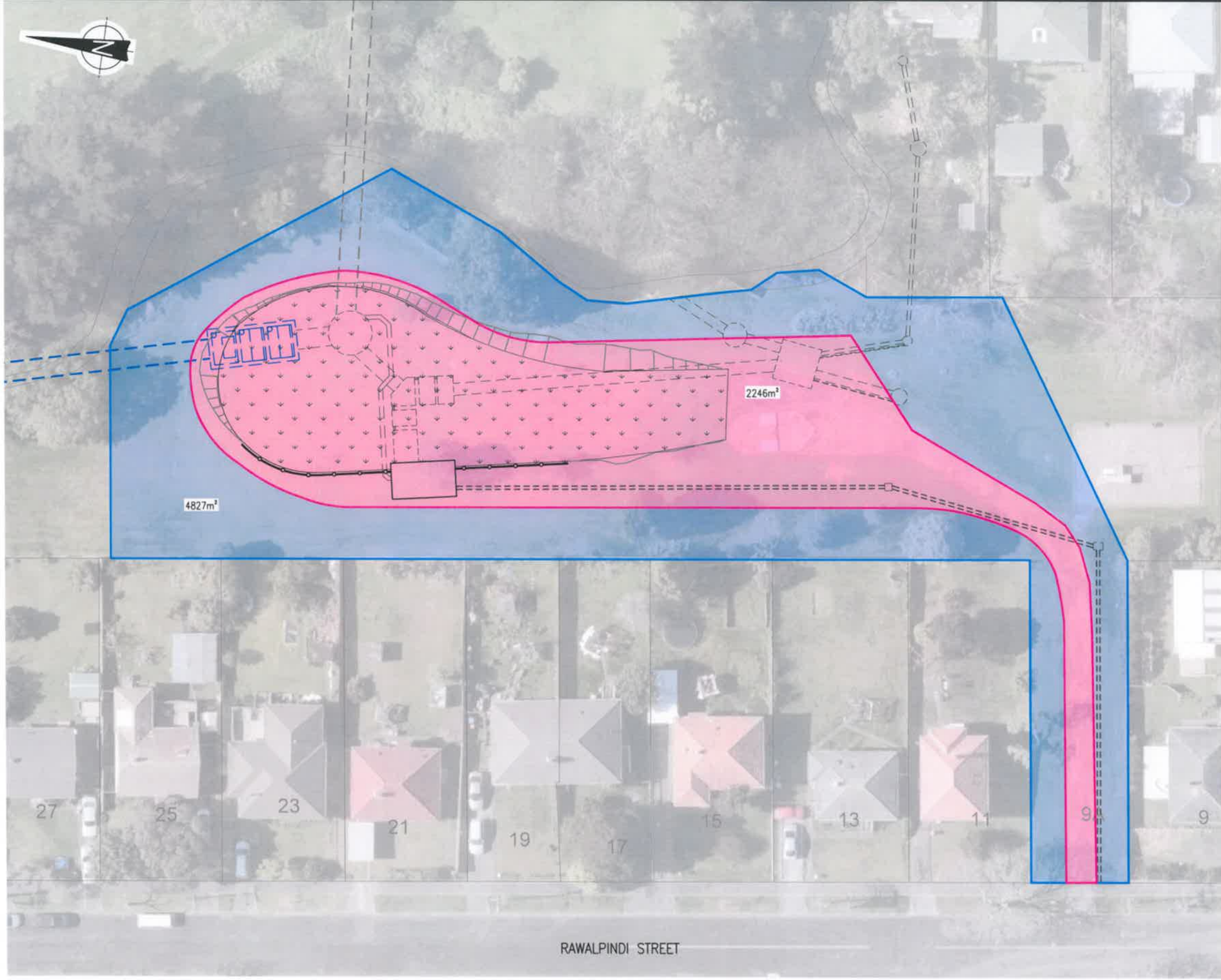




- LEGEND**
- PROPOSED EASEMENT
 - TEMPORARY DESIGNATION
 - PROPOSED LINK SEWER
 - PROPOSED INFRASTRUCTURE (BELOW GROUND)
 - PROPOSED INFRASTRUCTURE (ABOVE GROUND)
 - PROPOSED ALL WEATHER TRAFFICABLE ACCESS
 - FUTURE CSO COLLECTOR SEWER AND CHAMBER
 - PROPOSED RETAINING WALL



4827m²

2246m²

RAWALPINDI STREET

PLAN
SCALE 1:200 (A1)

SCALE 1:200 (A1) 0 4 8 12 16 20m
4 3 2 1

Plot Date: Jul 18, 2017 - 2:44pm \\water\internal\VR00\02 - Asset Development\W\N - Wastewater Networks\W\N - Project Files\5238 - CIV2 - Consents and Propriety\12.18 AC Easement - Rawalpindi Reserve.dwg

ISSUE	DATE	AMENDMENT	BY	APPD.	BY	DATE

DESIGNED	
DES. CHECKED	
DRAWN	
DWG. CHECKED	
PROJECT LEADER	
INFRASTR APP'D	

OPERATIONS	
INFRASTRUCTURE	

Watercare
COPYRIGHT - This drawing, the design concept, remain the exclusive property of Watercare Services Limited and may not be used without approval. Copyright reserved.

CENTRAL INTERCEPTOR
 RAWALPINDI RESERVE
 PROPOSED EASEMENT

CAD FILE	DATE 07/2017
ORIGINAL SCALE A1 AS SHOWN	CONTRACT No. 5747
REF. No.	ISSUE
DWG. No.	