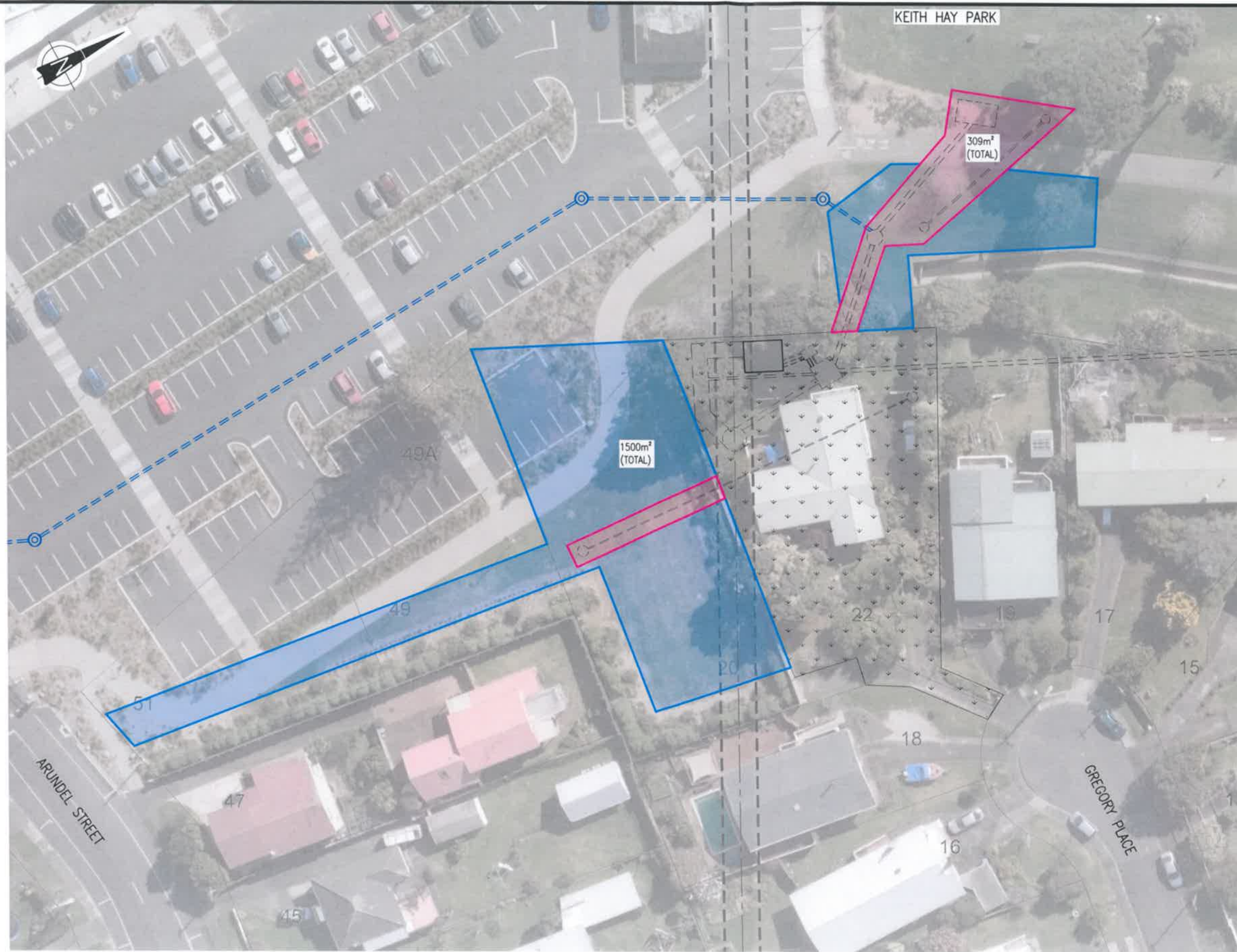


\\watercare\internal\06102 - Asset Development\WWS - Wastewater Networks\WWS - Project Files\0538 - CIV82 - Consents and Property\210 AC Easement - Keith Hay Park.dwg



LEGEND

- PROPOSED EASEMENT
- TEMPORARY DESIGNATION
- PROPOSED MAIN TUNNEL
- PROPOSED INFRASTRUCTURE (BELOW GROUND)
- PROPOSED INFRASTRUCTURE (ABOVE GROUND)
- PROPOSED ALL WEATHER TRAFFICABLE ACCESS
- FUTURE CSO COLLECTOR SEWER AND MANHOLE

PLAN
SCALE 1:250 (A1)

SCALE 1:250 (A1)
0
5
10
15
20
25m

ISSUE	DATE	AMENDMENT	BY	APPD.	BY	DATE

DESIGNED	
DES. CHECKED	
DRAWN	
DWG. CHECKED	
PROJECT LEADER	
INFRASTR APP'D	

Watercare

OPERATIONS
 INFRASTRUCTURE

COPYRIGHT - This drawing, the design concept, remain the exclusive property of Watercare Services Limited and may not be used without approval. Copyright reserved.

CENTRAL INTERCEPTOR
KEITH HAY PARK
PROPOSED EASEMENT

CAD FILE		DATE 07/2017	
ORIGINAL SCALE A1		CONTRACT No.	
AS SHOWN		5747	
REF. No.		ISSUE	
DWG. No.			