

**Date:** Wednesday 18 April 2018  
**Time:** 4.30PM  
**Meeting Room:** Local Board Chambers  
**Venue:** Papakura Service Centre  
35 Coles Crescent  
Papakura

---

## **Papakura Local Board**

# **OPEN MINUTE ITEM ATTACHMENTS**

---

### **ITEM TABLE OF CONTENTS**

### **PAGE**

**8.2 Deputation - Keri Vista Rise playground request**

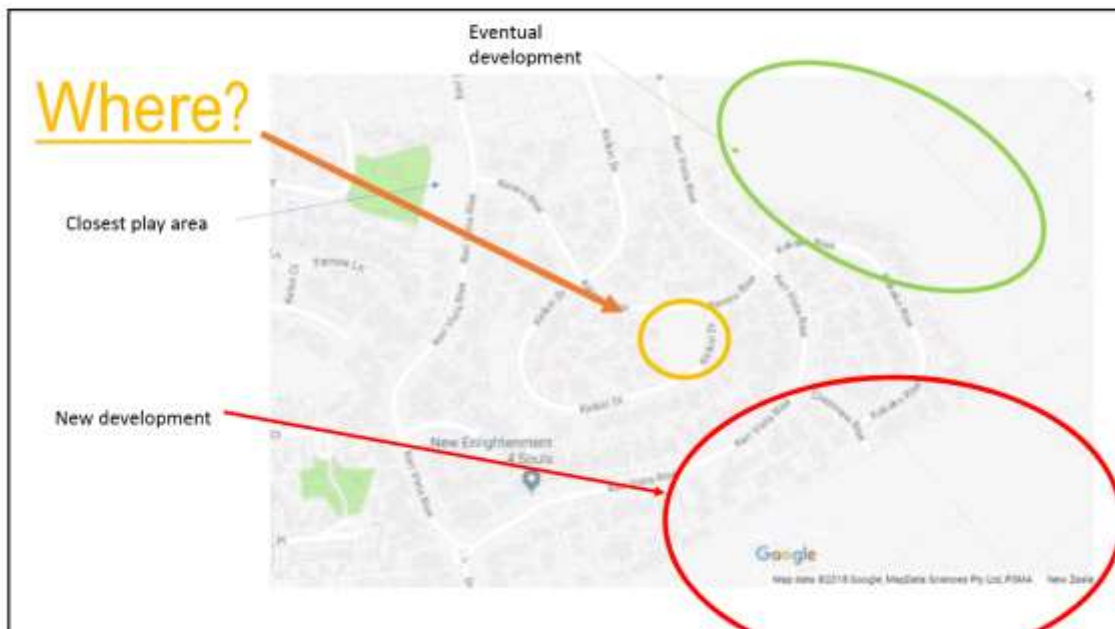
A. A playground for Keri Vista Rise PowerPoint presentation

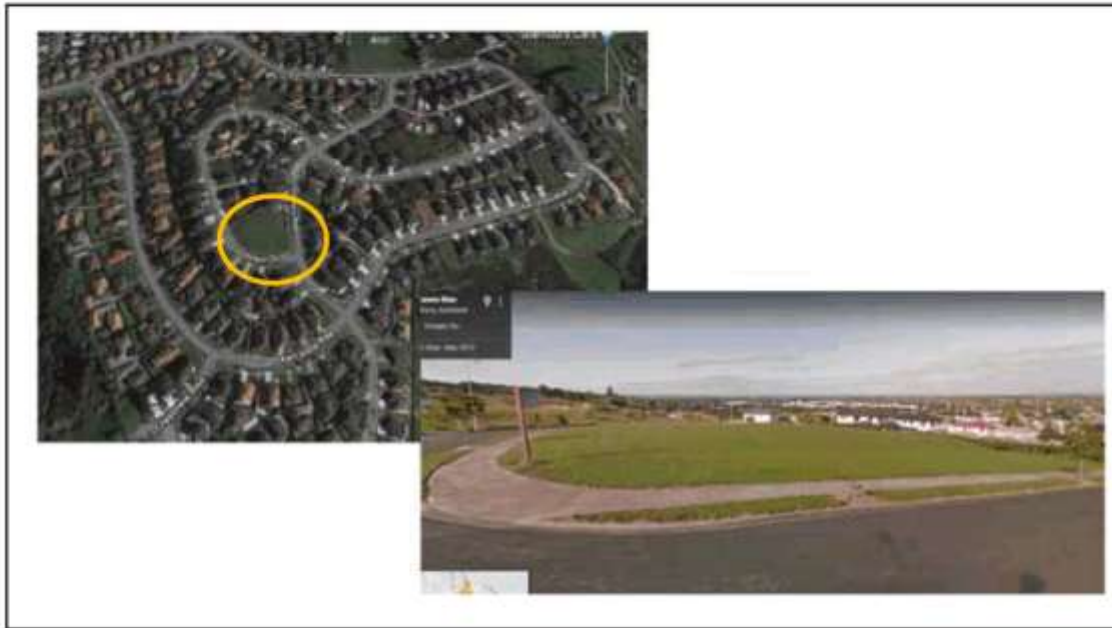
3





## A Playground for Keri Vista Hill





## Why?

- There is **huge growth** on our hill, hundreds of new homes are going in above us to an area which will apparently be called 'Harbour View Heights'.
- We have a large base of young families.
- Children playing on the streets, particularly on Keri Vista Rise hill need somewhere to go and play safely.
- The closest playground/skatepark to us services Dominion Road/Elsie Morton area. Keri Hill families do not want to go down there due to: distance, elevated crime and its reputation for difficult characters using the area.



We are a close knit community, the desire to have our kids out to play has come up on message boards often. We just need somewhere to let them do so safely.

**The benefits of play**

**Physical and mental health benefits**

Play supports cognitive development and the learning of many skills needed in adult life. These include the ability to:

- think creatively, make decisions and problem solve
- manage stress, anxiety, depression and aggression
- negotiate and build relationships
- assess personal safety and manage risks

Active forms of play, such as walking, running, jumping and climbing, support physical health through:

- the development of basic motor skills
- the exercise of muscles, the heart, lungs and other vital organs
- controlling obesity
- providing a foundation for participation in organised sport.

Play has benefits for individuals of any age, but is most beneficial to the very young. The first five years of a child's life affect their emotional and social well-being more than at any other time. Children raised in an otherwise secure environment with frequent opportunities to play are likely to perform better at school, and to become resilient and healthy adults. Public investment targeting children in these years is thought to deliver the best return (Figure 1).

For older children, unorganised play assists in the development of independence and the ability to manage risk and make good decisions. It has also been linked to decreasing the occurrence of depression.

Play into adulthood and old age supports the continued development and maintenance of the cognitive and behavioural functions first gained as a child. It is also thought to help reverse cognitive decline in seniors with dementia.

**Social and community benefits**

Community play spaces support social cohesion by enabling:

- positive interactions between neighbours, which generate a sense of safety and improve perceptions of safety
- exposure to, and tolerance of, people with different backgrounds and talents
- community participation by diverse people and vulnerable groups

*Taken from the Auckland Council 'Takaro: Investing in Play' Document.*

## Would residents use Dominion Road park?

**Comment 1:** It's all about convenience for me I was not aware that the park is used for crime I've used it myself and found it to be a place that my mokopuna are happy to play therefore I am happy to accommodate their needs but my answer would have to be honestly lol

**Comment 2:** I've lived in Papakura 17 years and for as long as I have been here that street has been tough and always gang activity and affiliates down there, there were also alot of suicides at that park 😞. I attended a few funerals for people who hung themselves at that park. Sorry for the morbid comment but it is true.

**Comment 3:** We are not too far from the Park but that hill is horrible to get up and down with young kids & nearly impossible if it's been raining. If they had a path it would be a different story but I don't go there just because it's not kid friendly to get to. It would take us longer to get to the new proposed site but I'd go there just because it's easier to access. The old park is impossible to access and even worse to get back home going up the hill.

**Post by Annika Rene:** Created a poll. March 7 at 10:04am

ONE more, as they will ask this:  
Would you use the playground down by Dominion Road/Elsie Morton Road? please tell me other reasons if there are some! 😊

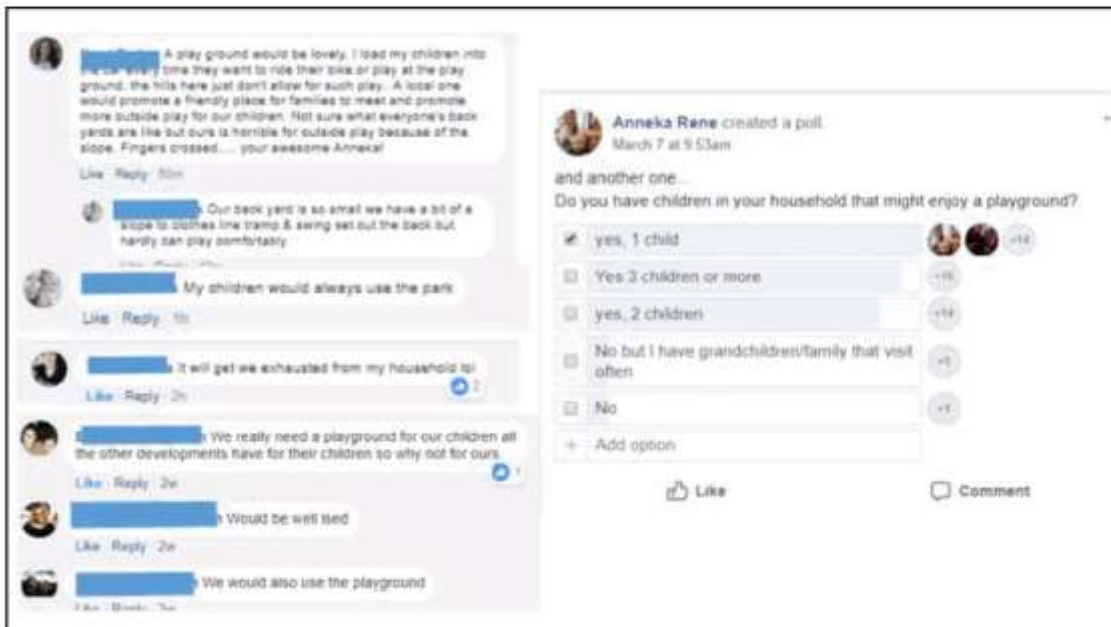
- No, as it is known for its crime
- No, it is too far
- Yes, it is fine
- No for other reason
- Don't know
- [+ Add option](#)

Like
Comment

## Who will use it?

This data is collected from a spread of 200 families in the hill currently (using our Keri Vista Residents Facebook Page

With the population looking to double up on our hill I imagine the figures will reflect a similar growth in support.





## What does the community want?

Ages of children are mostly preschool to intermediate. This particular spot is up on a hill, we would like to see the landscape used to that advantage. A lot of the ideas off the recent Council discussions were positively received by the community.

Quite a number were also keen to see this as a multi-purpose area with tables/picnic space for families to enjoy. A lot of residents also walk and exercise in the area, so multi-purpose equipt would be fantastic.

**Landscape**  
Use the local landscape through creating integrated features.

**SLOTTED & BUNDS** for climbing, jumping, rolling, balancing, sliding, sitting, sitting.

**DEPRESSIONS** for sand play, multi-use play.

**MULTIFUNCTIONAL** equipment for a variety of users and different play activities such as freestyle, sitting, balancing and over-riding.

**ALTERNATIVE EDGE** treatments to provide for a variety of users and different play activities such as freestyle, sitting, balancing and over-riding.

**PLAYERS**  
Playing for profit makes sure the play ground is for all ages residents and lighting areas have gates to keep the children in. There is not the wall issue.

**ADAPTIVE**  
Adapted with some other views on the play equipment used the gear.

**ADAPTIVE**  
Adapted with some other views on the play equipment used the gear.

**ADAPTIVE**  
Adapted with some other views on the play equipment used the gear.

**ADAPTIVE**  
Adapted with some other views on the play equipment used the gear.

## Please consider us 😊

For the Auckland Council, their Long-term Plan 2015-2025 includes \$25 million to provide new play spaces, and \$33 million to renew existing assets over the next 10 years.

We would like to be a part of this.