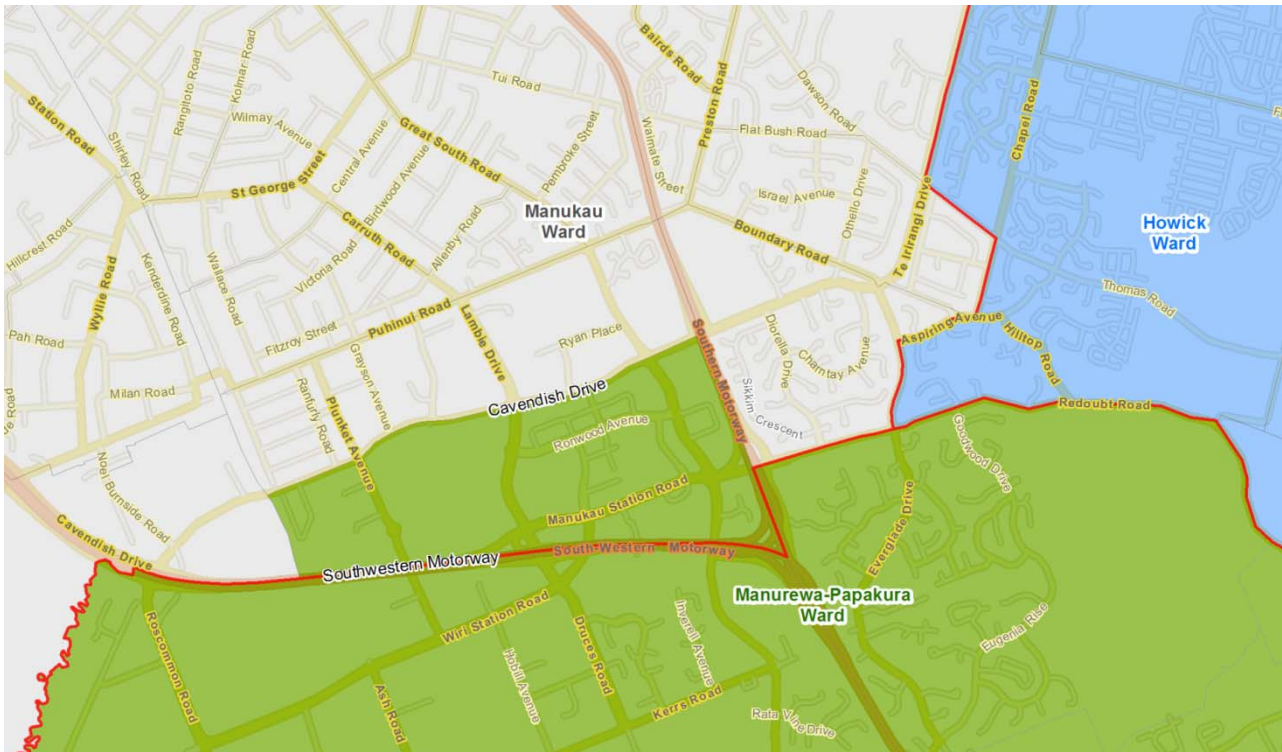


# Manurewa-Papakura ward

## Option 1:

- move northern boundary on western side of SH1 motorway up to Cavendish Drive



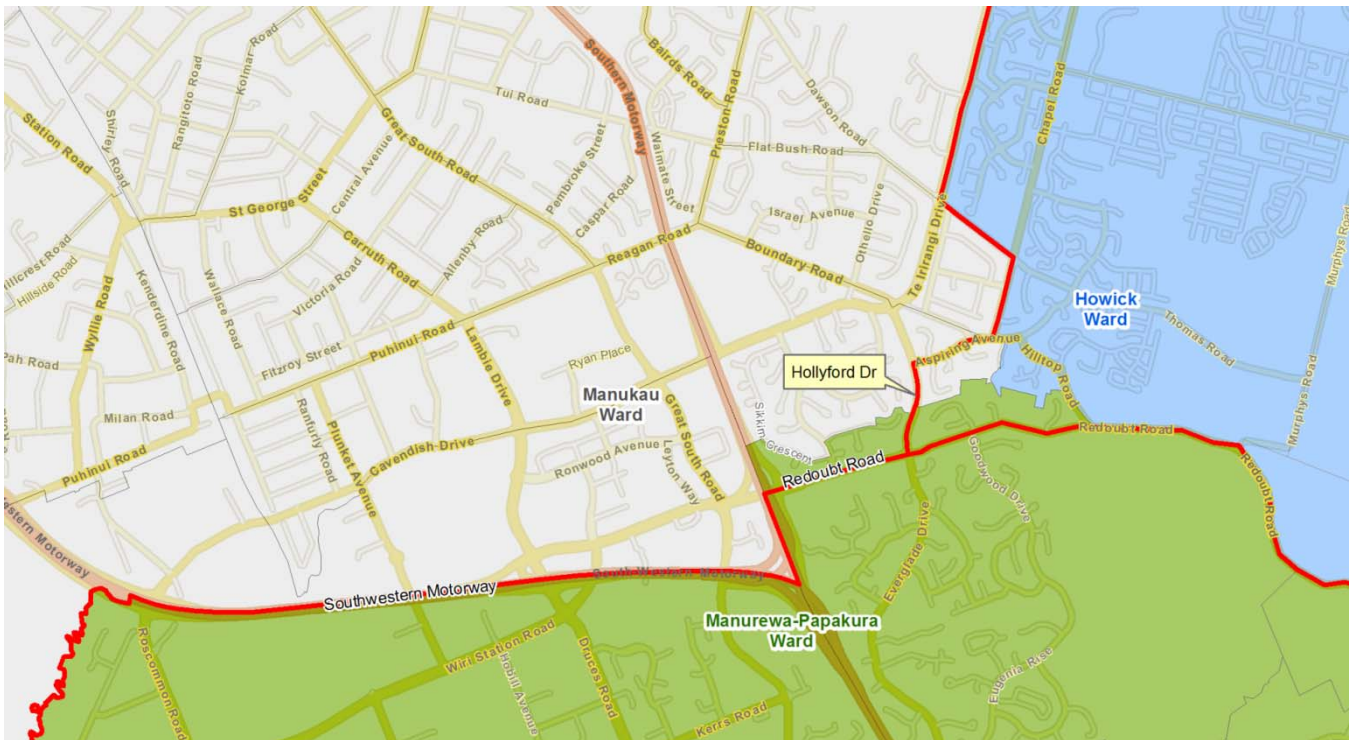
This boundary is similar to the legacy Manurewa ward boundary of Manukau City Council.

Implementing this boundary change also affects the Manukau ward.

# Manurewa-Papakura ward

## Option 2:

- move northern boundary on eastern side of SH1 motorway



Implementing this boundary change will also affect the Manukau and Howick wards.

It will smooth what is currently an odd-looking boundary between the three wards.