

**Date:** Thursday 24 May 2018  
**Time:** 5.15pm  
**Meeting Room:** Local Board Office  
**Venue:** 10 Belgium Street  
Ostend  
Waiheke

---

## **Waiheke Local Board**

# **OPEN MINUTE ITEM ATTACHMENTS**

---

<b>ITEM</b>	<b>TABLE OF CONTENTS</b>	<b>PAGE</b>
<b>9.1</b>	<b>Waiheke Community Childcare Centre grant application - Kathleen Gardam</b>	
A.	9.1 Waiheke Community Childcare Centre grant application - Kathleen Gardam	3
<b>9.9</b>	<b>Waiheke Resources Trust funding application - Hue Ross and Mike Maahs supported by Gary Wilton</b>	
A.	9.9 Waiheke Resources Trust funding application - Hue Ross and Mike Maahs supported by Gary Wilton	7
<b>19</b>	<b>Auckland Council's Quarterly Performance Report: Waiheke Local Board for quarter three, 1 January - 31 March 2018</b>	
A.	Waiheke Kapa Haka 2018	9

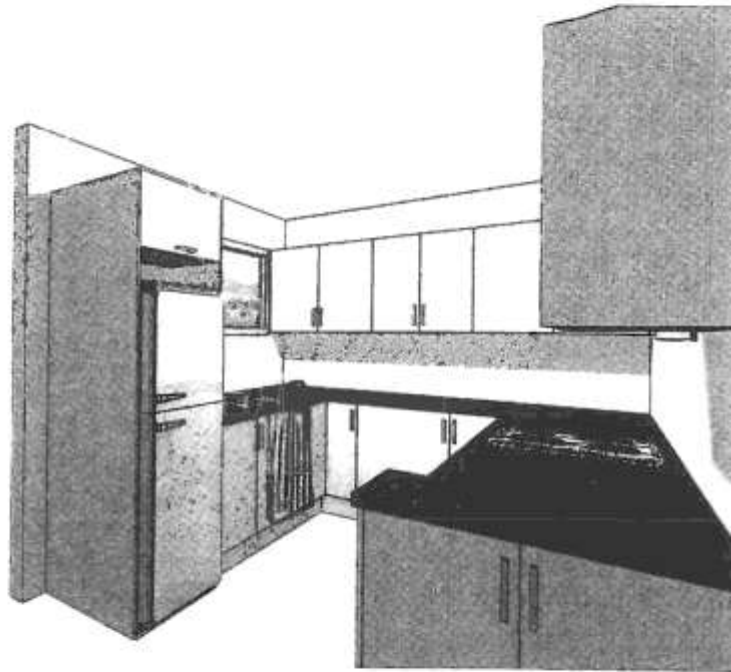




Wednesday

Item 9.1

Attachment A



Note: This drawing is an artistic interpretation of the general appearance of the design. It is not meant to be an exact rendition.

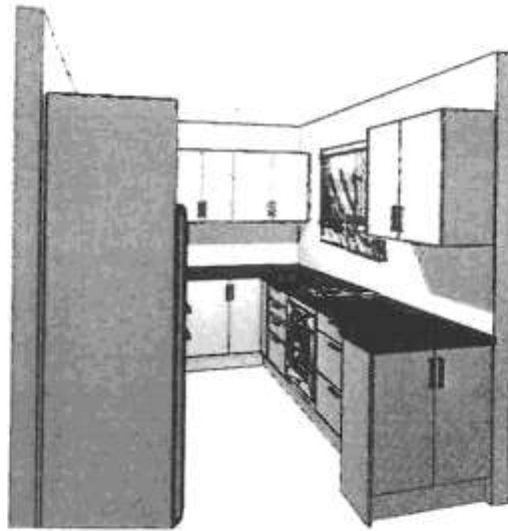


Designed: 4/4/2018  
Printed: 4/4/2018

Design:

AM

Drawings:



Note: This drawing is an artistic interpretation of the general appearance of the design. It is not meant to be an exact rendition.



Designed: 4/4/20  
Printed: 4/4/201

Design | All | Drawing





# MU1 & MU2 IN TE MATUKU BAY



MU1: Needs fencing and replanting

MU2: Already fenced, needs replanting





### Waiheke Kapa Haka

Kapa haka is an important expression of Māori cultural identity and pride of place. Kapa haka and waiata play an essential role in the tikanga of marae and schools, to welcome visitors, celebrate significant events and represent Waiheke on formal occasions.

Waiheke currently has two kapa haka groups entered in upcoming regional competitions: an intergenerational kaumatua/whanau community group and a group from Piringākau (Waiheke High School bilingual unit). The groups are seeking local board funding to increase capacity and meet the costs of resources and travel to the competitions. The groups are being co-ordinated by Te Āo Marama Hau from Waiheke High School and Jan Newton from Waiheke Adult Learning.

#### 1) Kaumatua/Whānau group - Te Whānau Whanui o Waiheke

A kaumatua /whanau grouping called "Te Whānau Whanui o Waiheke" has entered in the Tāmaki Makaurau regional competition 16 June.

The kaumatua/whanau section of the competition is intergenerational, and groups normally sing about the area they come from. Performances have a strong whakangahau (entertainment) focus.

The Waiheke group will celebrate Waiheke's people and environment and the Piritahi Marae kaupapa of "nga hau e wha" (the four winds) showing Maori, Pakeha, tauwi being together.

The group will have 24 performers on stage, aged from teens to 80s. The choreography is minimal this first year and the waiata are widely known and sung on Waiheke.

#### WAIATA SELECTION SUMMARY

- Tira: Maikara Ropata's Matariki song as the event is in the middle of Matariki
- Whakaeke: An abridged version of the high school eke. This states who we are as we take the stage.
- Moteatea: Ka Noho Au by Michelle Lee. This describes the view from the top of Putiki o Kahu and remembering those who plied the waters during historical times.
- Waiata -a-ringā: Ohorere by Pita and Claire Mahaki. This describes the journey from the mainland to the island that brings strength, knowledge and wisdom. The ferry is likened to a person being buffeted by various influences and says stay true to yourself and your anchor of Waiheke.
- Poi: Two very simple poi to illustrate this is a new group, a learning group. A start of a journey.
- Haka: to be chosen by all the men at the first practise.
- Whakawatea: Kia mau by Koro Kato pointing out it is through providing food we show hospitality.

#### Budget

Expenses requested	
Project Co-ordinator (12 hours)	\$300
Rent to Piritahi Marae - Whare kai (16 hours)	\$480
Printing costs	\$120
Travel cost to Auckland x 24 (Fullers ferry)	\$1000
Total	\$1900

## 2) Piringākau

Piringākau is the bilingual unit at Waiheke High School. Piringākau is seeking support for the Waiheke youth Kapa Haka team competing in the annual Te Ahurea Tino Rangatiratanga Regional Competition in October. The total budget for travel and accommodation is \$4250.

Piringākau are also seeking support for piupiu that will be used by the group in future events. When the Kapa Haka group attended Polyfest in March 2018, members were unable to wear piupiu because they only had 6 piupiu and the group now exceeds 24 members. In order for the youth of Waiheke to represent the community and stand proudly taking their place in Regional competitions, they need to be dressed appropriately. The group is also seeking sponsorship from local community members and businesses.

### Budget

<b>Expenses requested</b>	
Piupiu x 1	\$510
Travel cost to Auckland x 24 (Sealink ferry )	\$790
Van hire	\$800
Fuel	\$200
Registration	\$300
<b>Total</b>	<b>\$2600</b>