

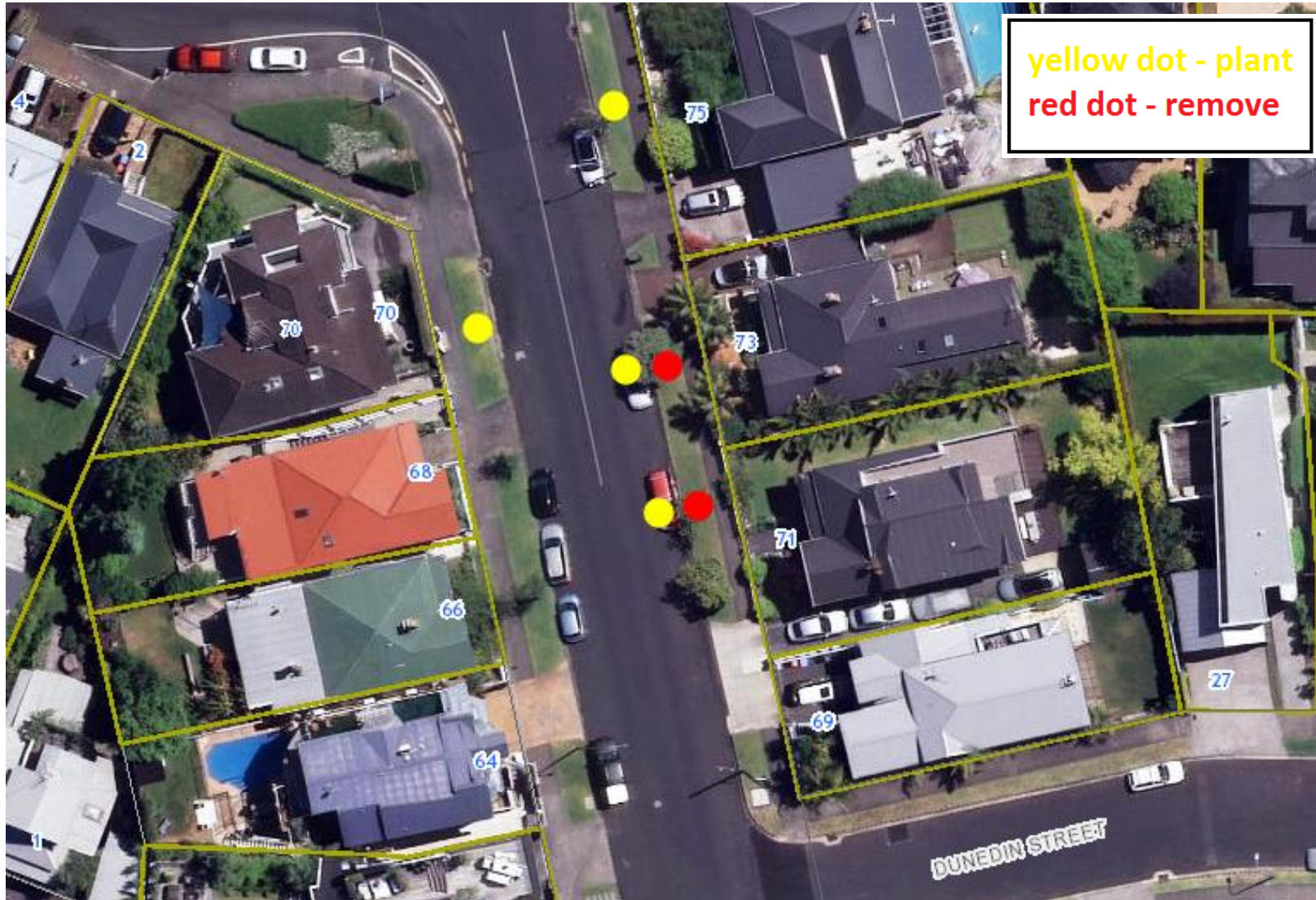
St Marys Road street tree management

1. Map – St Marys Road



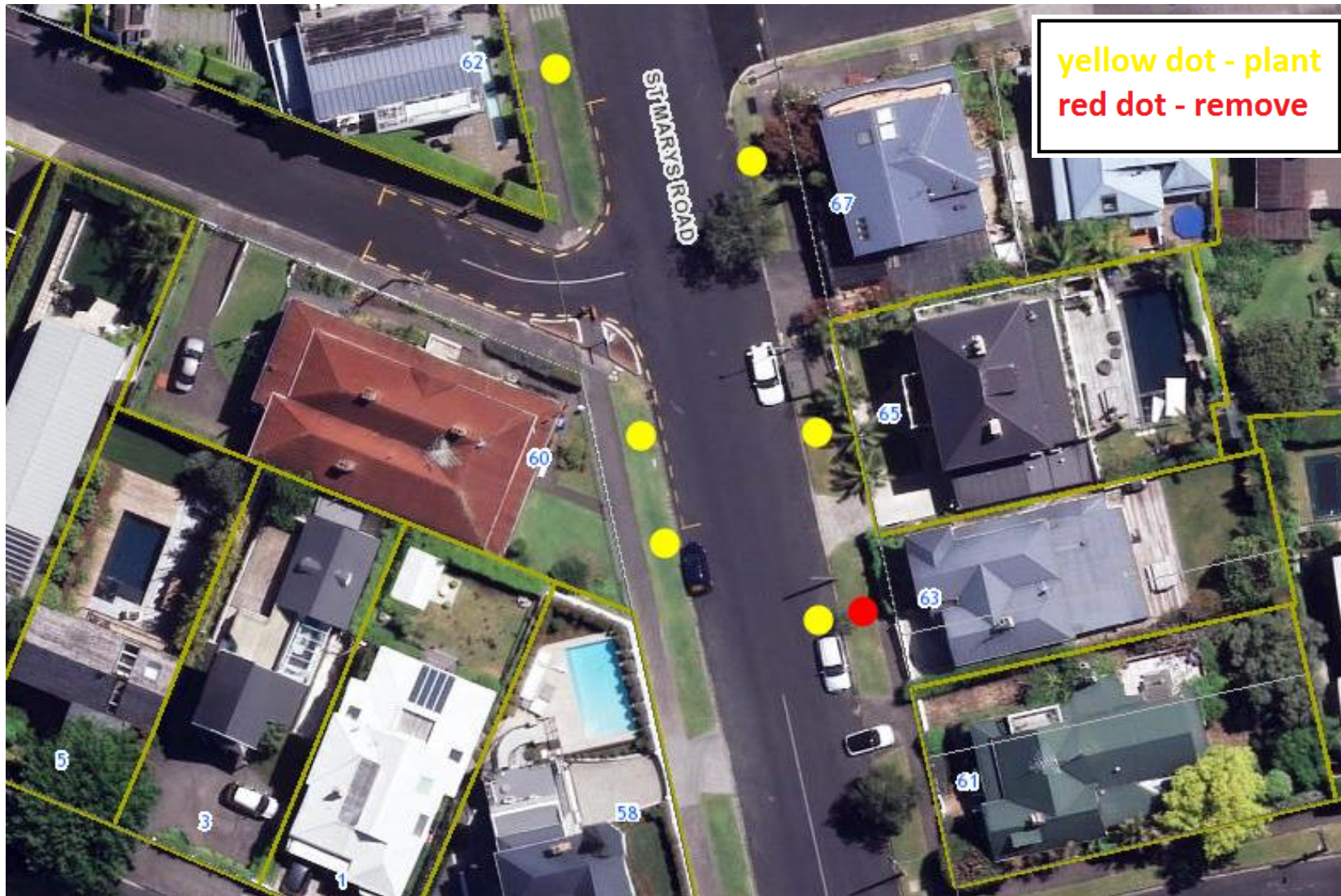
St Marys Road street tree management

2. Map 1 – London Street to Dunedin Street



St Marys Road street tree management

3. Map 2 – Dunedin Street to St Francis Sales Street



St Marys Road street tree management

4. Map 3 - St Francis Sales Street to Green Street



St Marys Road street tree management

5. Map 4 – Green Street to Dublin Street



St Marys Road street tree management

6. List of trees

Number	Street	Current Status (situation or species)	Height	Diameter (above ground)	Condition (1-good, 2-average, 3-poor)	Proposal	Planting quantity
27	St Marys Road	<i>Magnolia sp.</i>	1.50 m	0.05 m	1	Retain	0
27	St Marys Road	<i>Magnolia sp.</i>	5.00 m	0.20 m	1	Retain	0
29	St Marys Road	<i>Betula pendula</i>	5.00 m	0.30 m	3	Remove	1
35	St Marys Road	<i>Betula pendula</i>	4.00 m	0.20 m	2	Retain	0
36	St Marys Road	<i>Betula pendula</i>	6.00 m	0.20 m	1	Retain	0
36	St Marys Road	Stump	n/a	0.30 m	3	Plant	1
37	St Marys Road	<i>Griselinia littoralis</i>	4.00 m	0.30 m	1	Retain	0
37	St Marys Road	<i>Griselinia littoralis</i>	4.00 m	0.30 m	1	Retain	0
38	St Marys Road	<i>Betula pendula</i>	8.00 m	0.40 m	2	Retain	0
39	St Marys Road	Vacant berm	n/a	n/a	n/a	Plant	1
40	St Marys Road	<i>Citrus limon</i>	1.50 m	0.10 m	1	Retain	0
42	St Marys Road	<i>Betula pendula</i>	6.00 m	0.40 m	2	Retain	0
43	St Marys Road	Vacant berm	n/a	n/a	n/a	Plant	2
46	St Marys Road	<i>Betula pendula</i>	6.00 m	0.30 m	2	Retain	0
46	St Marys Road	<i>Alectryon excelsus</i>	6.00 m	0.30 m	1	Retain	0
47	St Marys Road	<i>Betula pendula</i>	6.00 m	0.30 m	1	Retain and add a tree	1
49	St Marys Road	<i>Betula pendula</i>	6.00 m	0.30 m	1	Retain and add a tree	1
49	St Marys Road	<i>Betula pendula</i>	8.00 m	0.40 m	1	Retain and add a tree	1

St Marys Road street tree management

Number	Street	Current Status (situation or species)	Height	Diameter (above ground)	Condition (1-good, 2-average, 3-poor)	Proposal	Planting quantity
50	St Marys Road	<i>Betula pendula</i>	6.00 m	0.40 m	3	Remove	1
53	St Marys Road	Vacant berm	n/a	n/a	n/a	Plant	2
54	St Marys Road	<i>Betula pendula</i>	4.00 m	0.10 m	2	Retain	0
56	St Marys Road	<i>Betula pendula</i>	2.00 m	0.10 m	2	Retain	0
57	St Marys Road	<i>Betula pendula</i>	8.00 m	0.30 m	1	Retain	0
58	St Marys Road	<i>Betula pendula</i>	2.00 m	0.10 m	2	Retain	0
59	St Marys Road	Vacant berm	n/a	n/a	n/a	Plant	1
60	St Marys Road	Vacant berm	n/a	n/a	n/a	Plant	2
61	St Marys Road	<i>Betula pendula</i>	6.00 m	0.30 m	1	Retain	0
62	St Marys Road	Vacant berm	n/a	n/a	n/a	Plant	1
63	St Marys Road	<i>Betula pendula</i>	2.00 m	0.10 m	3	Remove	1
65	St Marys Road	Vacant berm	n/a	n/a	n/a	Plant	1
66	St Marys Road	<i>Betula pendula</i>	5.00 m	0.20 m	2	Retain	0
67	St Marys Road	<i>Betula pendula</i>	8.00 m	0.50 m	1	Retain and add a tree	1
68	St Marys Road	<i>Betula pendula</i>	4.00 m	0.20 m	2	Retain	0
71	St Marys Road	<i>Alectryon excelsus</i>	4.00 m	0.20 m	1	Retain	0
71	St Marys Road	<i>Alectryon excelsus</i>	3.00 m	0.20 m	3	Remove	1
73	St Marys Road	<i>Melia azedarach</i>	4.00 m	0.30 m	3	Remove	1
75	St Marys Road	Stump	n/a	0.30 m	3	Plant	1
70A	St Marys Road	Vacant berm	n/a	n/a	n/a	Plant	1