

Date: Tuesday 21 August 2018
Time: 4.00pm
Meeting Room: Council Chamber
Venue: Henderson Civic Centre
6 Henderson Valley Road
Henderson

Henderson-Massey Local Board

OPEN MINUTE ITEM ATTACHMENTS

ITEM	TABLE OF CONTENTS	PAGE
17	LOA to install waste water infrastructure on Moire Park	
A.	Attachment 1	3
B.	Attachment 2 Moire Park Access points	5
C.	Attachment 3 Entry pits	7
D.	Attachment 4 Affected areas	9

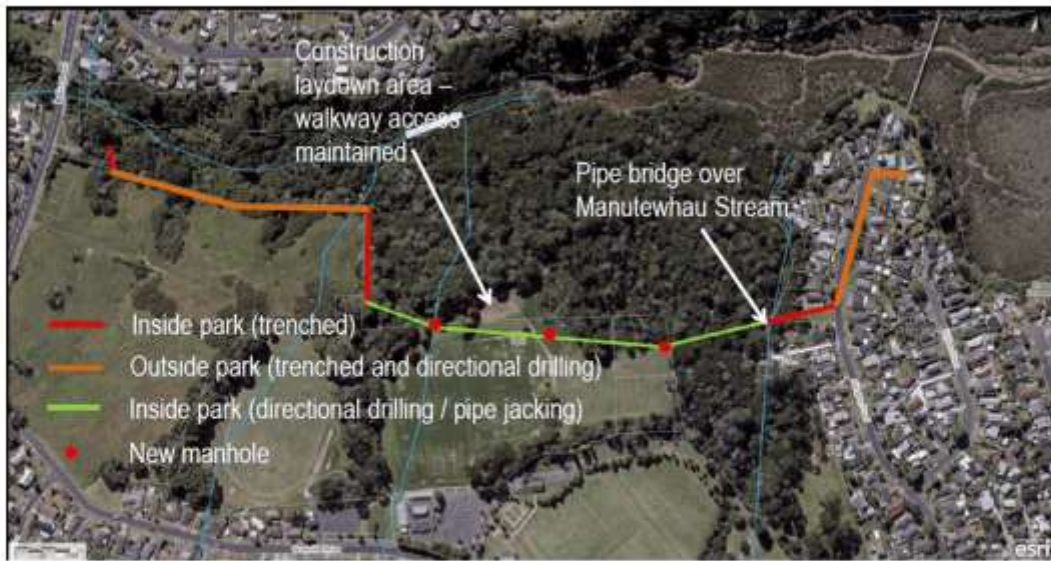




Figure 1: Alternative access routes

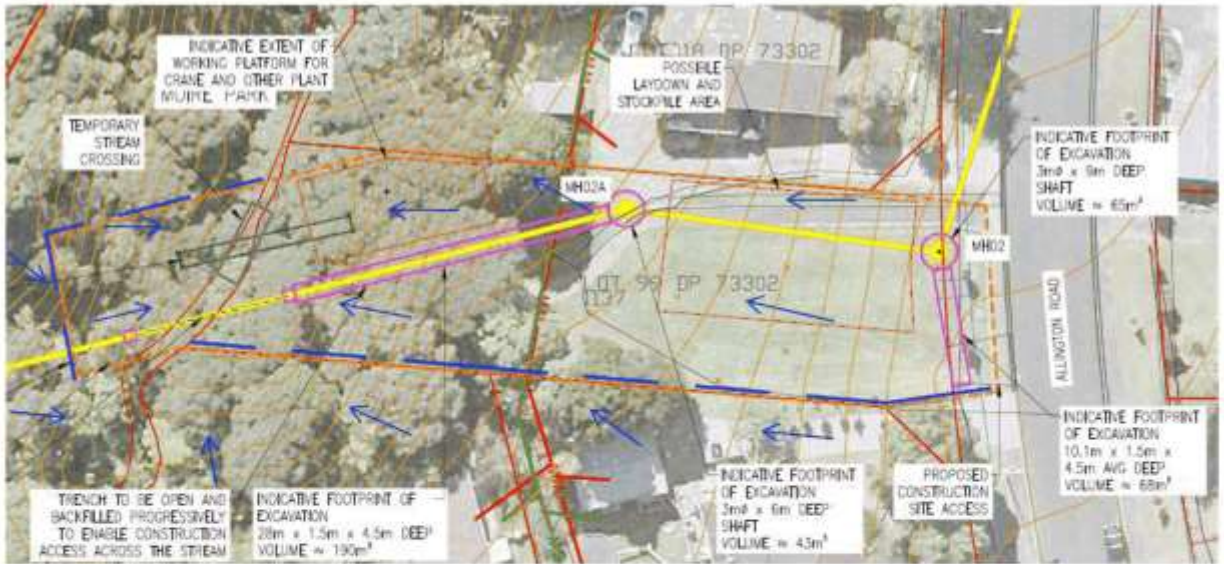


Figure 1: Pipe Alignment (yellow) and area of works (orange dashed line)

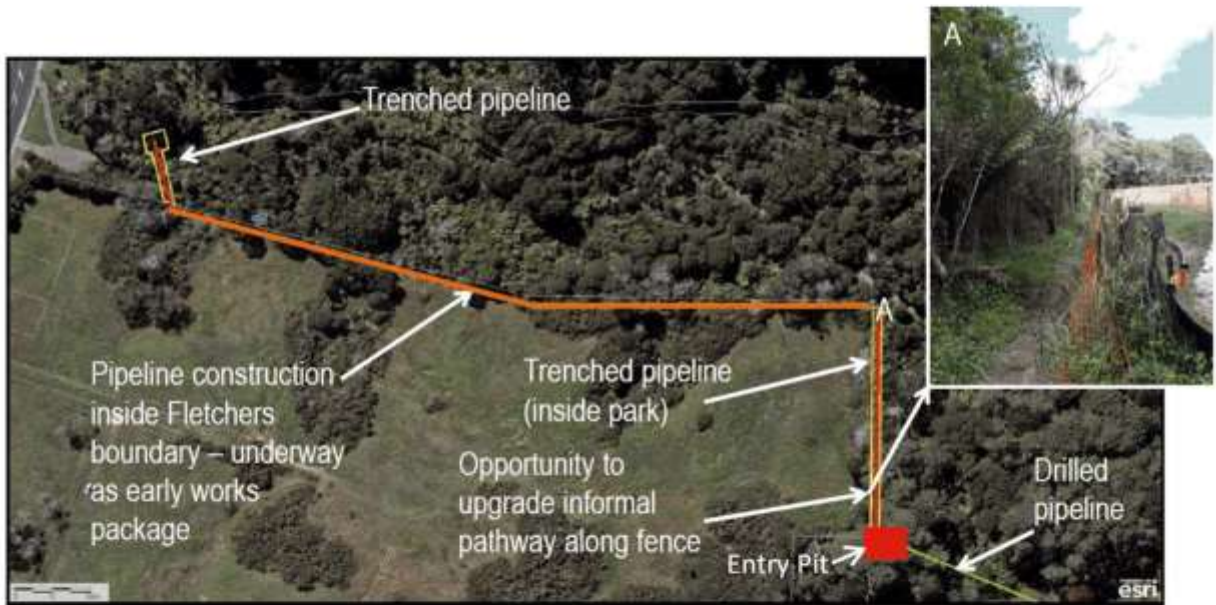


Figure 2: Western/Moire Road entrance. Two open cut sections depicted in yellow



- NOTES:**
1. CO-ORDINATES ARE IN NZTM AND LEVELS ARE TO AUCKLAND L&S 1946 DATUM.
 2. TO BE BUILT TO AUCKLAND COUNCIL STANDARDS, WITH FINAL POSITION TO BE CONFIRMED BY AUCKLAND PARKS TEAM.
 3. REFER TO GREENSCENE REPORT FOR PLANTING DETAILS.

- LEGEND**
- PATH – REPLACEMENT WALKING TRACK WITH ASSOCIATED EDGE PLANTING
 - REMEDATION PLANTING AREA
 - ENHANCEMENT PLANTING AREA

PLAN
SCALE 1:1000 (A1)

FOR INFORMATION ONLY

ISSUE	DATE	AMENDMENT	BY	APPD.	BY	DATE
1	07-18	FOR INFORMATION ONLY	JG	TH	WSL PROJ. LEAD	

Watercare
COPYRIGHT – This drawing, the design concept, remain the exclusive property of Watercare Services Limited and may not be used without approval. Copyright reserved.

LAWSONS CREEK BRANCH SEWER DUPLICATION – DSLWD
 MOIRE PARK
 MITIGATION CONCEPT PLAN

CAD FILE	2012839.013	DATE	30-07-2018
ORIGINAL SCALE	A1 AS SHOWN	CONTRACT No.	6666
REF. No.	CIVIL		
DWG. No.	2012839 .013	ISSUE	1