

Date: 7/08/2018
Time: 9.30am
Meeting Room: Ōrākei Marae
Venue: 59b Kitemoana Street
Ōrākei
Auckland

**Komiti Whakarite Mahere /
Planning Committee**

OPEN MINUTE ITEM ATTACHMENTS

ITEM	TABLE OF CONTENTS	PAGE
14	Impacts of the Unitary Plan on residential development	
A.	7 August 2018, Planning Committee: Item 14 - Impacts of the Unitary Plan on residential development, presentation	3

Impacts of the Unitary Plan on residential development

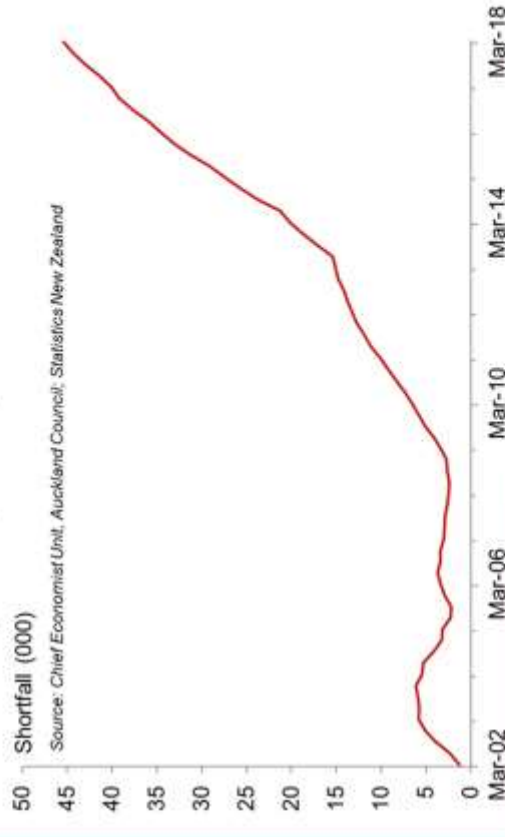
Presented by David Norman
Chief Economist, Auckland Council
7 August 2018

Visit www.aucklandcouncil.govt.nz – Chief Economist Unit



What's happening now: housing shortfall

Estimated housing shortfall, Auckland, 2002 to 2018



Source: Chief Economist Unit, Auckland Council; Statistics New Zealand

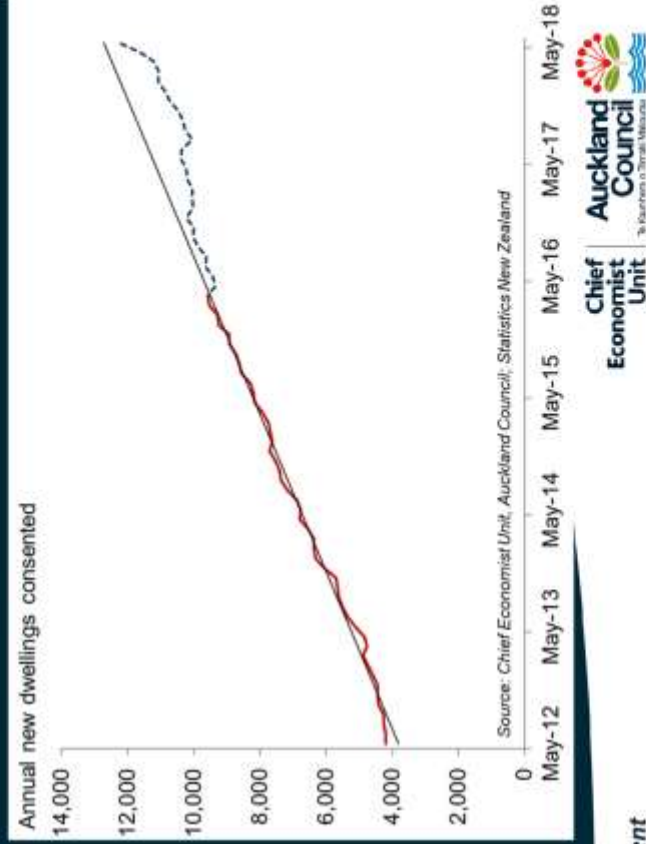


- Shortfall now at over 45,000
- MBIE: 45,000 at end of 2017
- RBNZ: 50,000 mid-2017

Impacts of the Unitary Plan on residential development

Construction: flat then growth

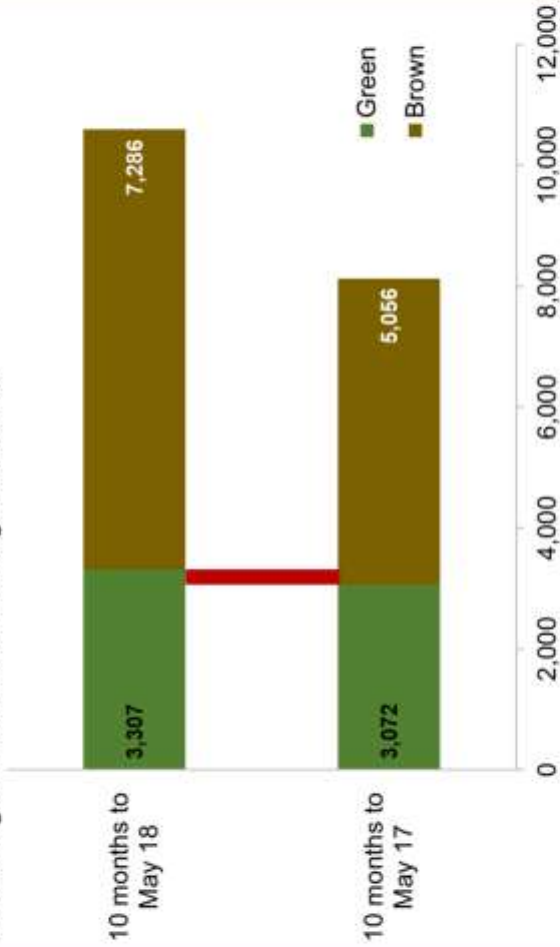
- Only 7.4% growth in 15 months to Aug-17 (5.9%p.a.)
- 2nd wind began in August 2017
- 10 months to May 2018: consents up 27%
- CCCs: 8,225 issued (+30%)



Impacts of the Unitary Plan on residential development

Where growth is: brown v green

Brown v greenfield new dwellings consented



Source: Chief Economist Unit, Auckland Council



Impacts of the Unitary Plan on residential development

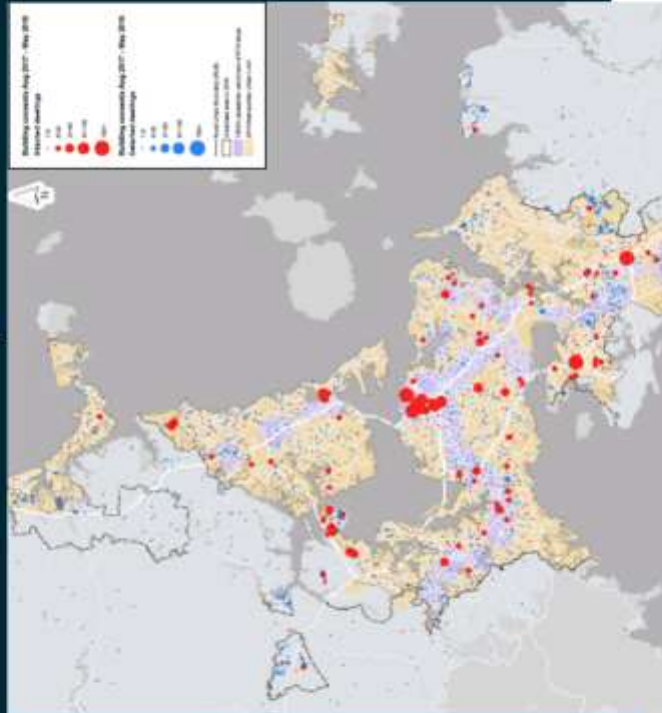
Where growth is: local boards and type

Dwellings consented by local board and type (Aug '17 - May '18)



Impacts of the Unitary Plan on residential development

Where growth is: rapid transit access

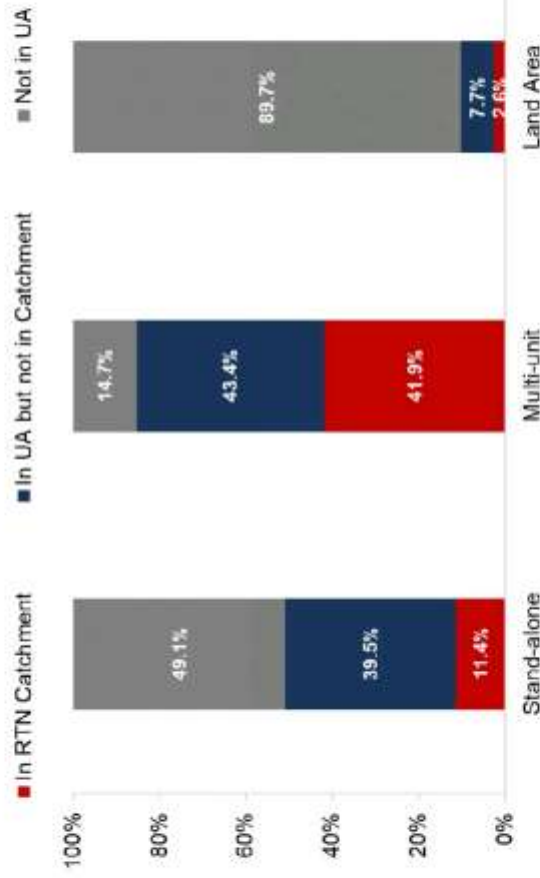


Impacts of the Unitary Plan on residential development



Where growth is: rapid transit access

Dwellings consented by type and area, 10 months to May 2018



Source: Chief Economist Unit, Auckland Council

Impacts of the Unitary Plan on residential development





Impacts of the Unitary Plan on residential development