

Proposal to split the Manukau ward

Auckland Council must review its representation arrangements for the 2019 elections. We have a governing body of one mayor and 20 councillors as well as 21 local boards.

Councillors are elected by geographical areas called 'wards'. The voters in each ward elect the councillor, or councillors, for their ward. If Auckland was not divided into wards, all councillors might come from the same area and there would be parts of Auckland that would not be represented. Wards are only for the election of councillors. Changing a ward boundary does not affect local board boundaries.

Local boards are responsible for the local activities of Auckland Council and councillors are responsible for big picture decisions for the whole of Auckland. Residents already have access to local board members on local issues, however councillors need to engage with their communities on regional matters.

We propose to split Manukau Ward into two smaller areas corresponding to the Māngere-Ōtāhuhu and Ōtara-Papatoetoe local board areas and would like to know your views on this. We believe this will provide more effective representation of those communities with each councillor having a smaller area to engage with.

Rules around wards

The legislation has rules about wards:

Rule 1: a ward must provide effective representation of communities of interest

Rule 2: a ward must provide fair representation

Rule 1 means that ward boundaries should not split communities. Wards should represent communities. It also means that a ward should not have communities within the ward that are so different it would be hard to represent them all. This rule also requires ward boundaries to align with local board boundaries if this is possible.

Rule 2 means that, in a ward, the population per councillor should not vary from the average number of people per councillor across the whole of Auckland, give or take ten per cent.

Current wards

Governing body members are currently elected from 13 wards across Auckland. Some of these wards have two councillors and some have one councillor.

Wards with 1 councillor	Wards with 2 councillors
Rodney	Albany
Waitematā	North Shore
Ōrākei	Albert-Eden-Roskill
Whau	Waitākere
Maungakiekie-Tāmaki	Howick
Franklin	Manukau
	Manurewa-Papakura

Why just the Manukau ward?

We have looked at whether any wards with two councillors could be split into smaller wards with one councillor each. It is best for the smaller wards to align with local board boundaries because these boundaries represent existing communities. There is only one ward which currently has two councillors which can be split into smaller wards along local board boundaries, and still comply with the rule about fair representation. That is the Manukau ward.

Continued overleaf

For detailed information on all these proposed changes visit aucklandcouncil.govt.nz/haveyoursay or your local library or council service centre.

Proposal to split the Manukau ward

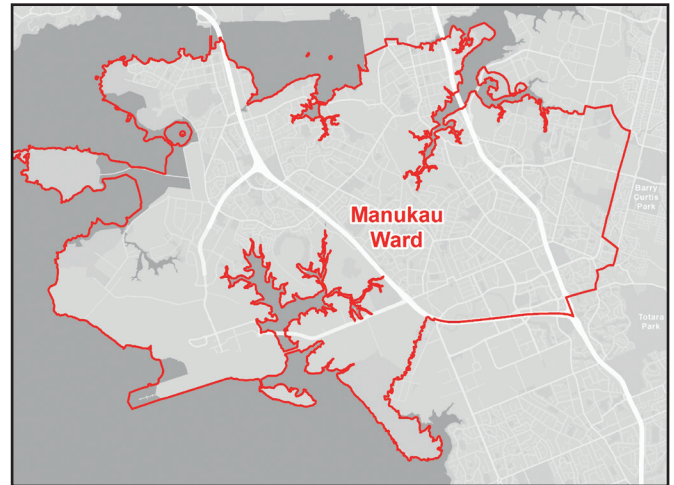
Current Manukau ward

Manukau ward

Same area as the Māngere-Ōtāhuhu and Ōtara-Papatoetoe local boards combined.

Population: 168,900

Councillors: 2



Proposed two single wards

Māngere-Ōtāhuhu ward

Same area as Māngere-Ōtāhuhu Local Board

Population: 81,100

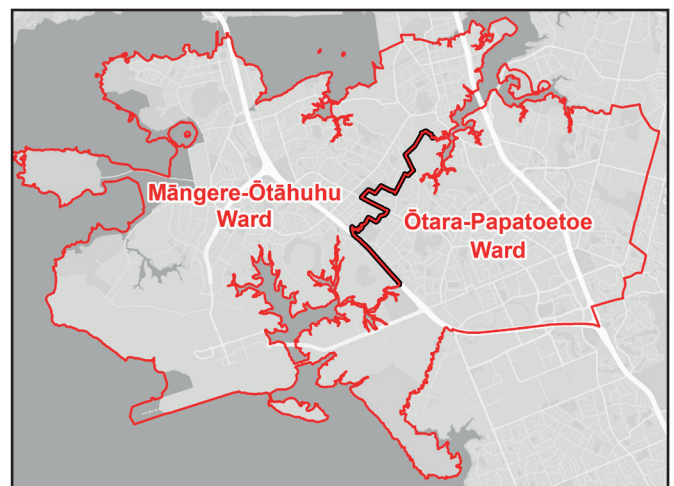
Councillors: 1

Ōtara-Papatoetoe ward

Same area as Ōtara-Papatoetoe Local Board

Population: 87,800

Councillors: 1



Questions you might like to consider:

Would two smaller wards help each councillor to engage better with his or her community on regional matters?

Or, would splitting the ward result in splitting communities which should not be split? For example, are there aspects of the Ōtara, or Papatoetoe, communities that are similar to Māngere and Ōtāhuhu, such as the communities' ethnic make-up and cultural activities?

Many people see Ōtara and Papatoetoe as being different communities. They are currently joined with Māngere and Ōtāhuhu in the Manukau Ward, represented by two councillors. Do you think it would make any difference if Papatoetoe and Ōtara are joined together in one smaller ward and represented by one councillor? Do you think that would join communities that are not similar with the result that the one councillor might find it difficult to represent them?

You can make a submission, **by 11 September 2018**:

Online: aucklandcouncil.govt.nz/have-your-say

Email: representationreview@aucklandcouncil.govt.nz

Post:

Auckland Council Representation Review

Freepost Number 238716

Private Bag 92300

Victoria Street West

Auckland 1142

For detailed information on all these proposed changes visit aucklandcouncil.govt.nz/haveyoursay or your local library or council service centre.