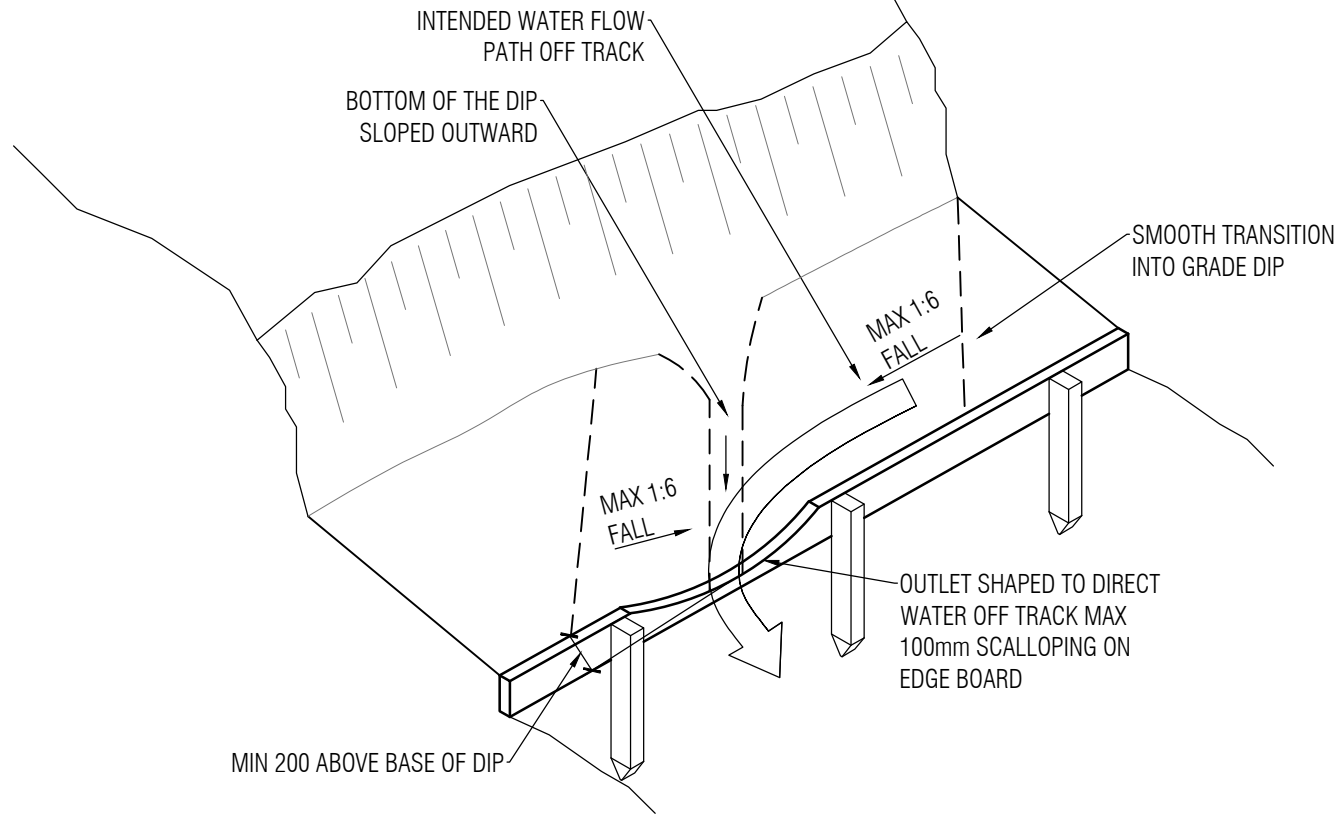


DO NOT SCALE

01

GRADE DIP DETAIL

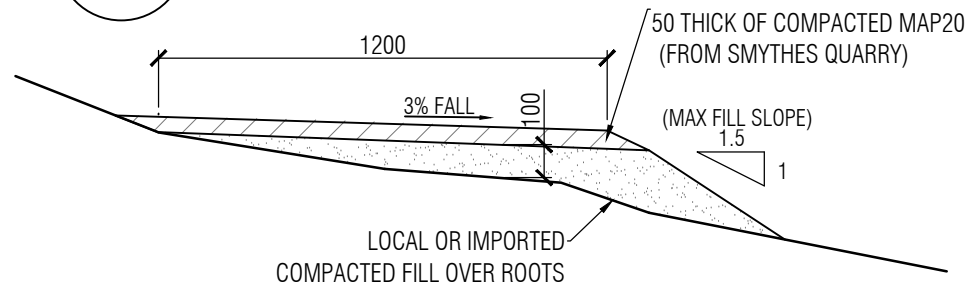
SHT - NTS (SCALLOPED EDGE BOARD)



04

TYPICAL FILL FORMATION

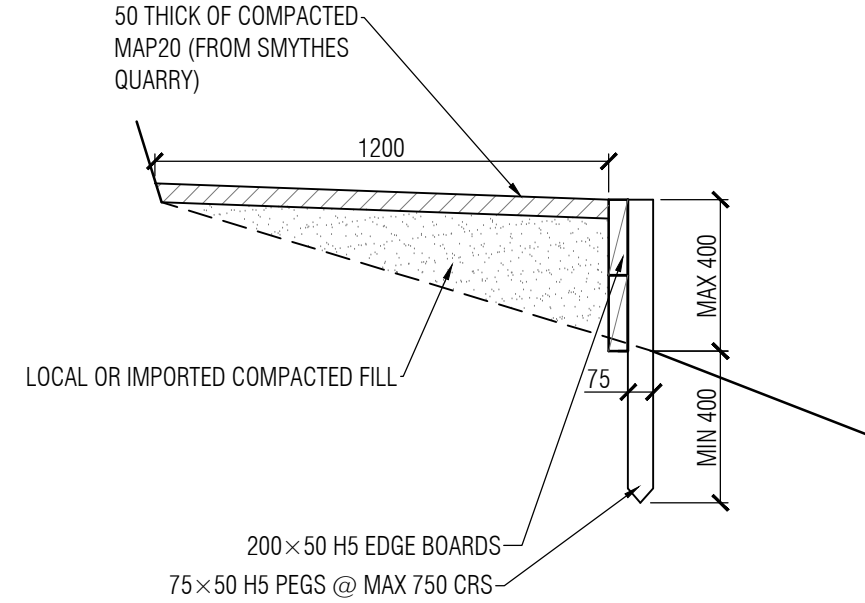
SHT - 1:20 @ A3



02

TYPICAL EDGE BOARD FORMATION

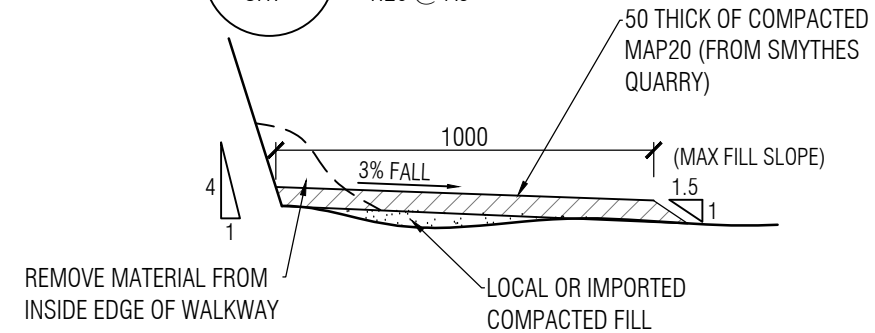
SHT - 1:20 @ A3



03

TYPICAL NARROW FORMATION

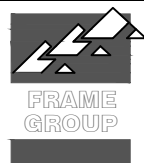
SHT - 1:20 @ A3



Rev	Date	Amendment

DO NOT SCALE

DRAWN



Frame Group Limited

PO BOX 147211, PONSONBY, AUCKLAND 1144
LEVEL 2, 16 COLLEGE HILL, AUCKLAND, NZ
PHONE: 09 638 7221
© FRAME GROUP LIMITED, 2018

PREPARED FOR



PROJECT

PUKEKIWIRIKI Pa TRACK DEVELOPMENT

TITLE

TRACK SECTION &
EDGE BOARD

SCALE AS SHOWN

DATE JULY 2018

DRAWN SLM

DESIGNED TB

FGL JOB 17/080

APPROVED

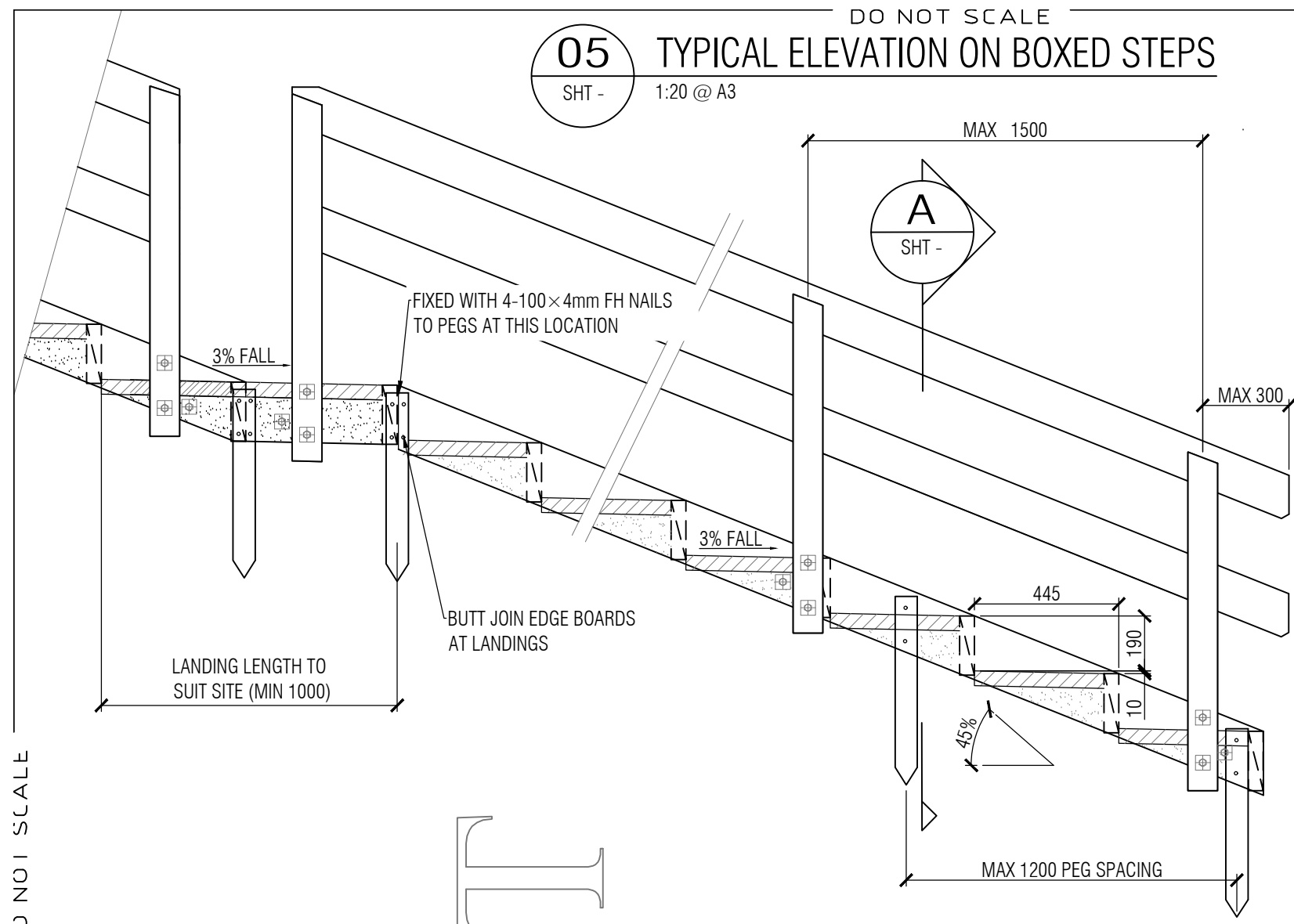
DRAWING 02

REV

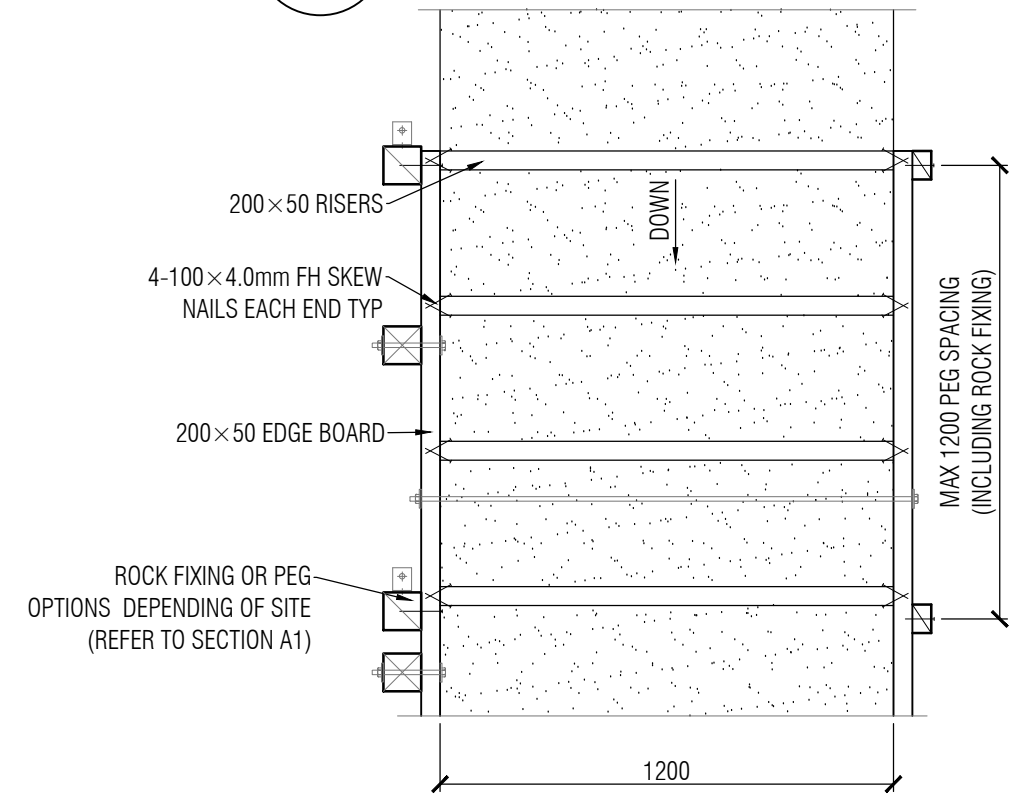
DO NOT SCALE

Rev	Date	Amendment

05 TYPICAL ELEVATION ON BOXED STEPS
SHT - 1:20 @ A3



06 PART PLAN ON BOXED STEPS
SHT - 1:20 @ A3



- NOTES:**
- TIMBER GRADE:**
- ALL TIMBER TO BE G8 GRADE.
 - TIMBER TREATMENT:**
- ROUND PILES IN CONTACT WITH GROUND TO BE H5.
- SAWN TIMBER NOT IN CONTACT WITH GROUND TO BE H3.2
- SAWN TIMBER IN CONTACT WITH GROUND TO BE H5.
- TREATMENT SHALL COMPLY WITH THE CURRENT REQUIREMENTS OF THE TIMBER PRESERVATION COUNCIL. ALL TIMBER SHALL BE BRANDED WITH THE APPROPRIATE WOODMARK, AND BE TREATED AT LEAST 2 MONTHS PRIOR TO USE.
 - NAILS:**
- GENERAL STRUCTURAL USE 100x4mm FH.
- ALL NAILS SHALL BE HOT DIPPED GALVANISED.
 - BOLTS:**
BOLTS SHALL BE M12 HOT DIPPED GALVANISED ENGINEERS BOLTS FITTED WITH 50x50x5 GALVANISED SQUARE WASHERS BOTH ENDS. ALL GALVANISED BOLTS IN CONTACT WITH TREATED TIMBER SHALL BE PROTECTED USING GP GREASE IN PRE GREASED HOLES.

DRAFT

DO NOT SCALE

Frame Group Limited
PO BOX 147211, PONSONBY, AUCKLAND 1144
LEVEL 2, 16 COLLEGE HILL, AUCKLAND, NZ
PHONE: 09 638 7221
© FRAME GROUP LIMITED, 2018

PREPARED FOR
Auckland Council
Te Kaitiaki o Tamaki Makaurau

PROJECT
PUKEKIWIIRIKI Pa TRACK DEVELOPMENT
DO NOT SCALE

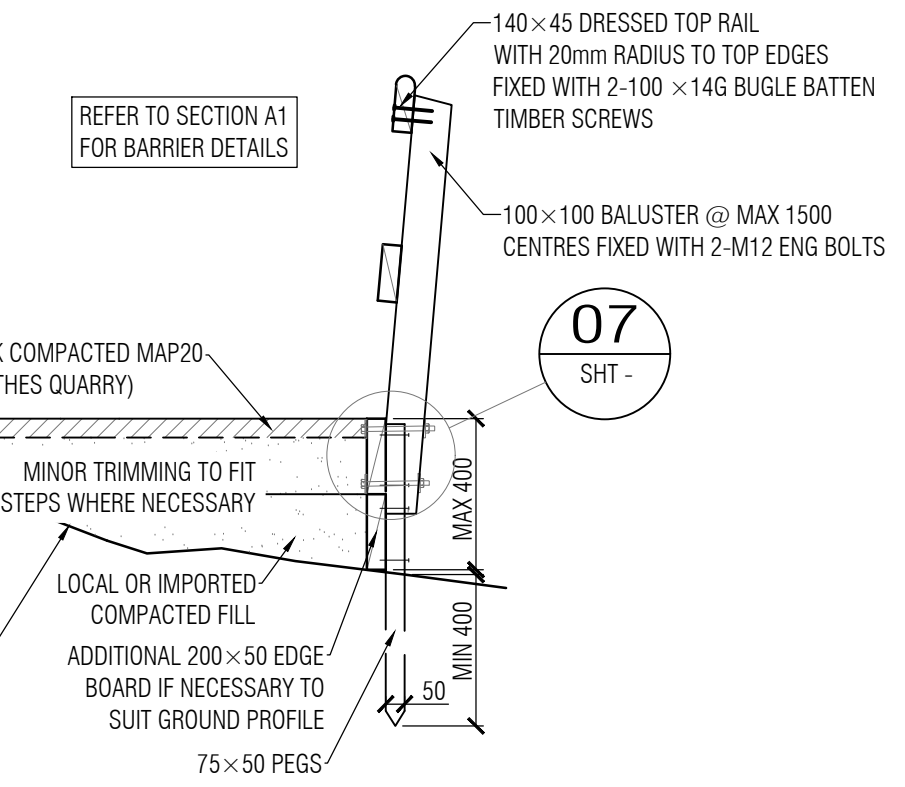
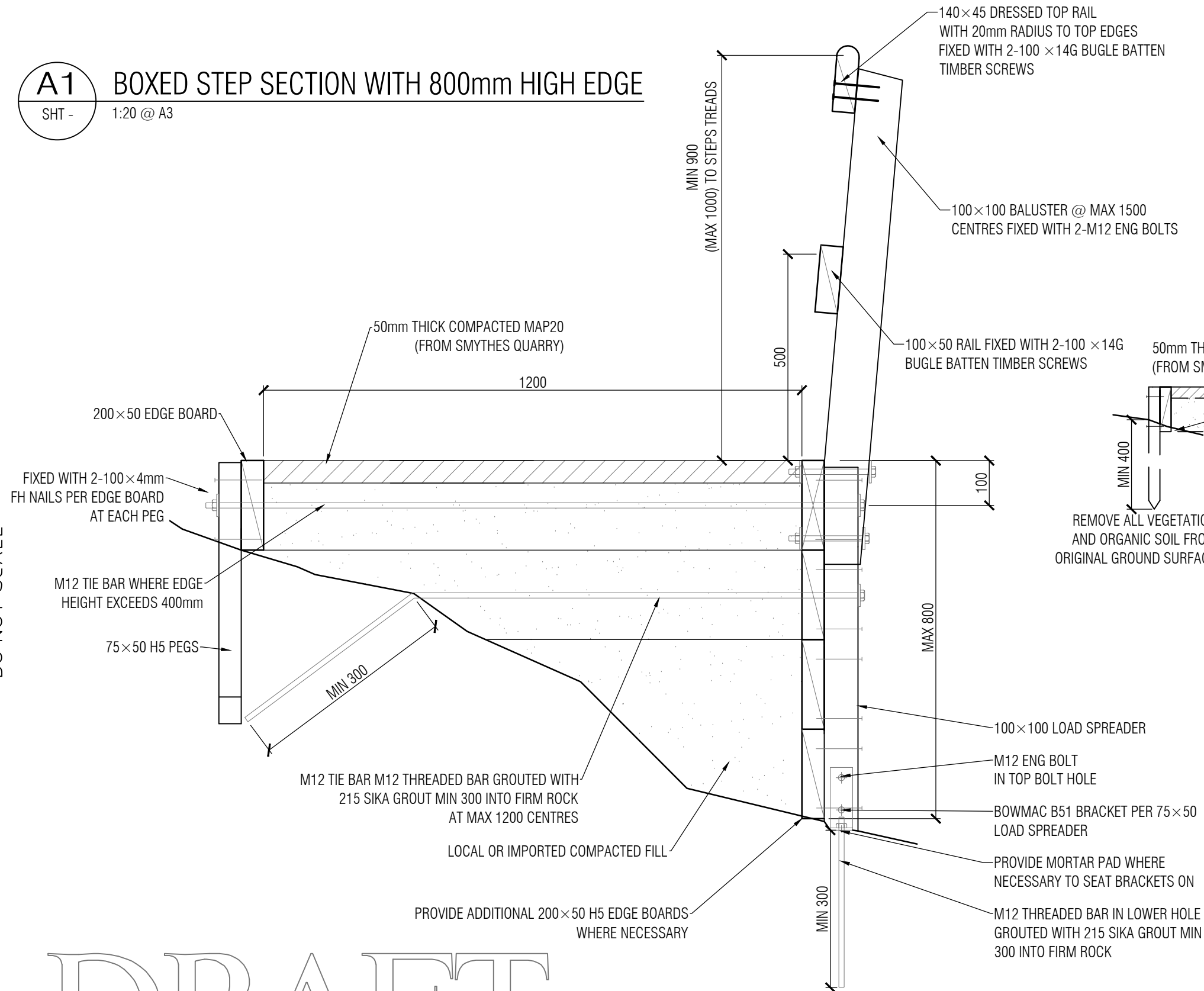
TITLE
**BOXED STEPS
PLAN AND ELEVATION**

SCALE	AS SHOWN	DATE	JULY 2018
DRAWN	SLM	DESIGNED	TB
APPROVED		FGL JOB	17/080
		DRAWING	03
		REV	

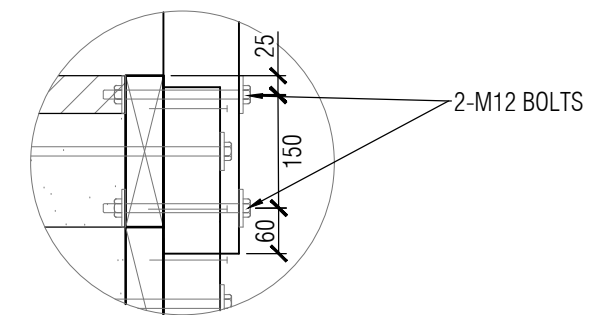
Rev	Date	Amendment

A1 BOXED STEP SECTION WITH 800mm HIGH EDGE
SHT - 1:20 @ A3

A2 TYPICAL SECTION ON BOXED STEPS
SHT - 1:20 @ A3



07 BALUSTER FIXING DETAIL
SHT - 1:10 @ A3

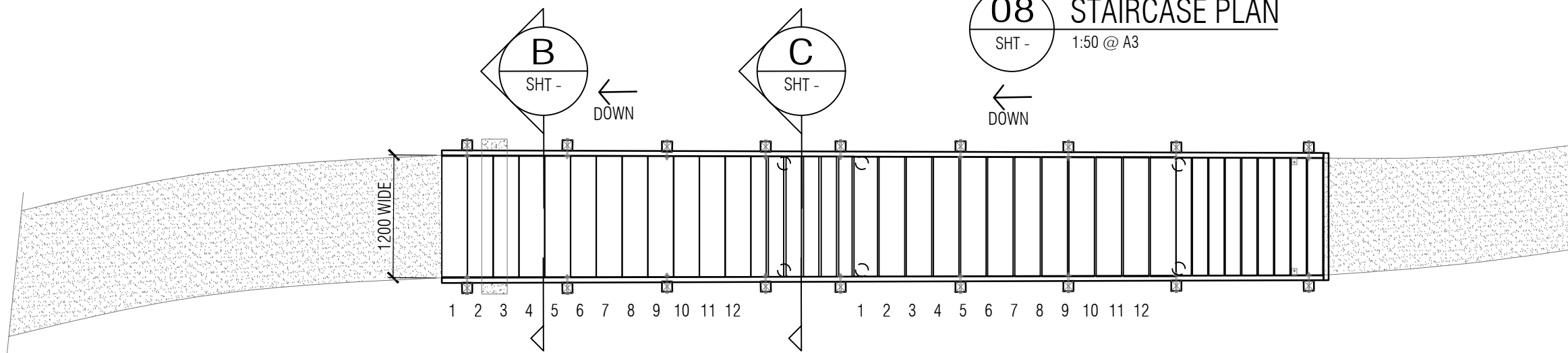


DRAFT

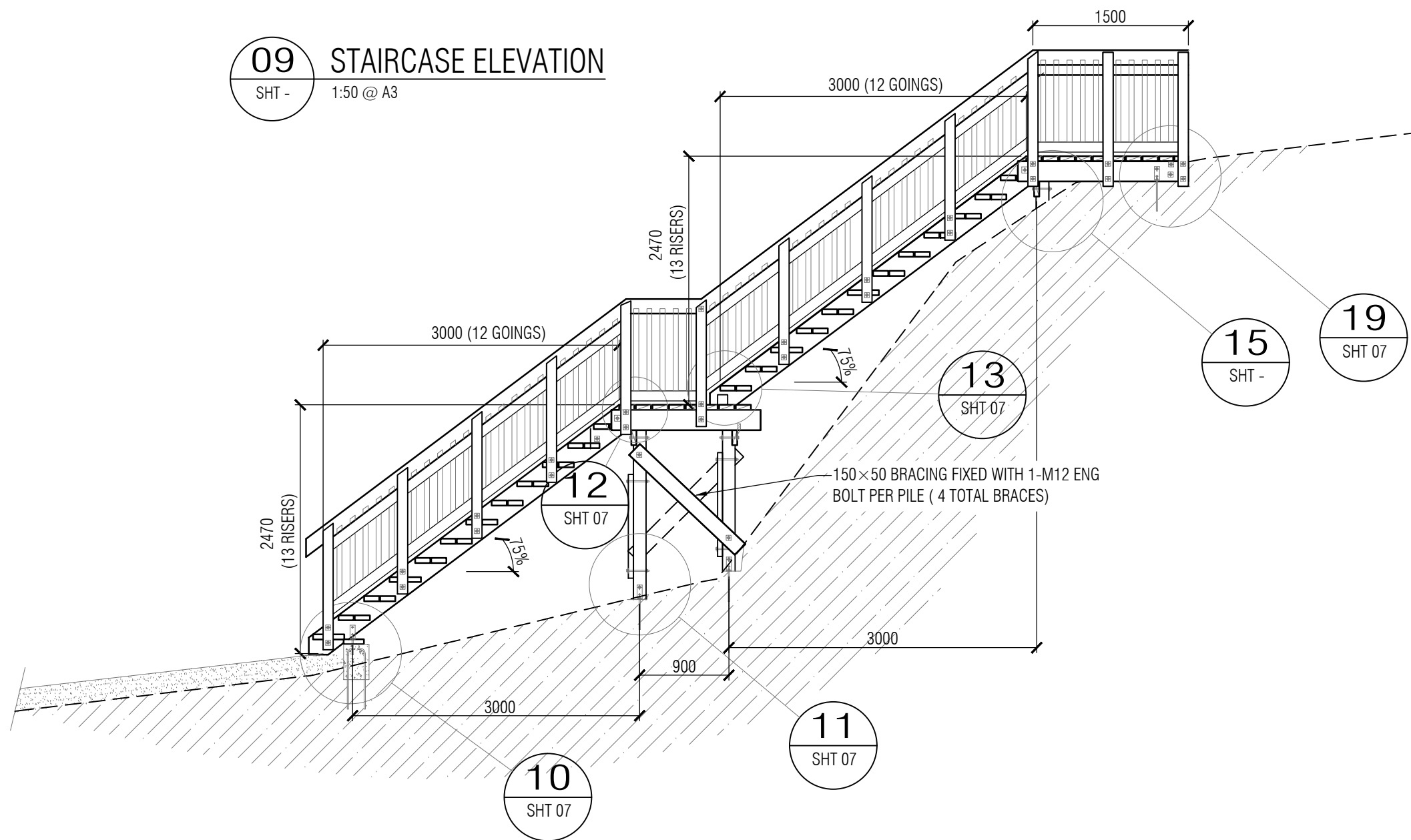
DO NOT SCALE

Rev	Date	Amendment

08 STAIRCASE PLAN
SHT - 1:50 @ A3



09 STAIRCASE ELEVATION
SHT - 1:50 @ A3



DRAWING

THIS STRUCTURE IS DESIGNED IN ACCORDANCE WITH SNZ HB 8630:2004 "TRACKS AND OUTDOOR VISITOR STRUCTURES"

DESIGN DETAILS	
SITE USER GROUP	SST
BARRIER DESIGN LOAD	0.75 kN/m
DECK DESIGN LOAD	4.0 kPa
EFFECTIVE FALL HEIGHT	<3.0m
FALL SURFACE	UNFAV

DO NOT SCALE

Frame Group Limited
PO BOX 147211, PONSONBY, AUCKLAND 1144
LEVEL 2, 16 COLLEGE HILL, AUCKLAND, NZ
PHONE: 09 638 7221
© FRAME GROUP LIMITED, 2018

PREPARED FOR
Auckland Council
Te Kaitiaki o Tāmaki Makaurau

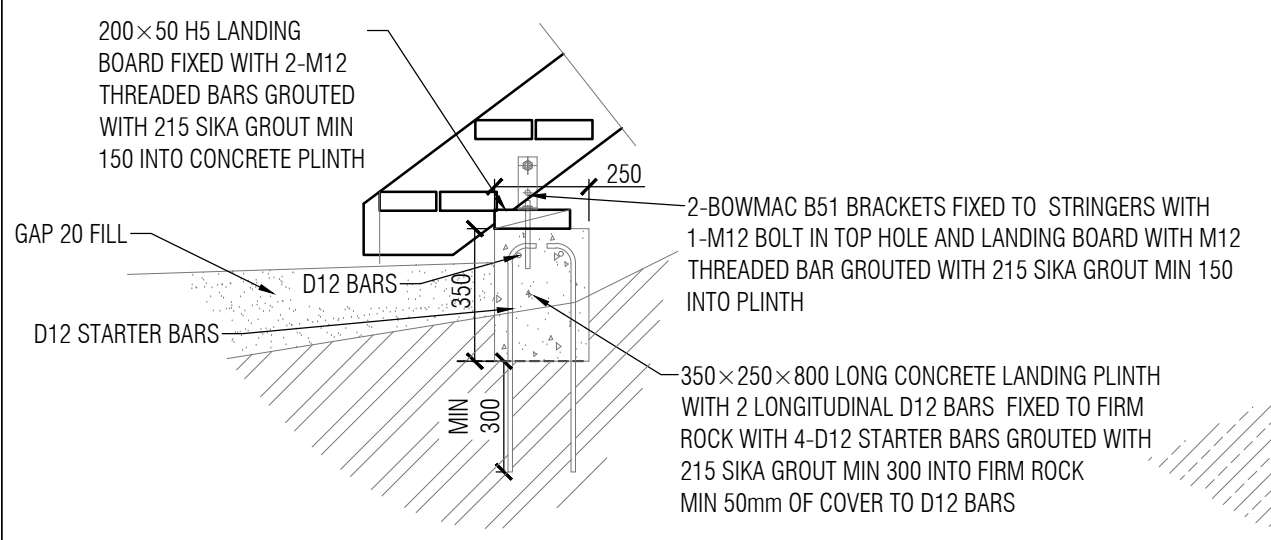
PROJECT
PUKEKIWIRIKI Pa TRACK DEVELOPMENT

TITLE
**STAIRCASE
PLAN AND ELEVATION**

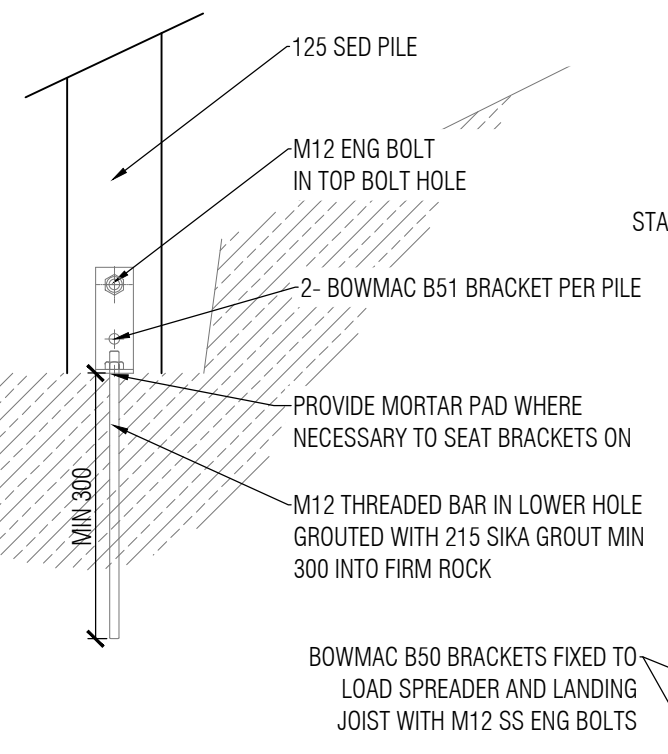
SCALE	AS SHOWN	DATE	JULY 2018
DRAWN	SLM	DESIGNED	TB
		FGL JOB	17/080
APPROVED		DRAWING	05
		REV	

Rev	Date	Amendment

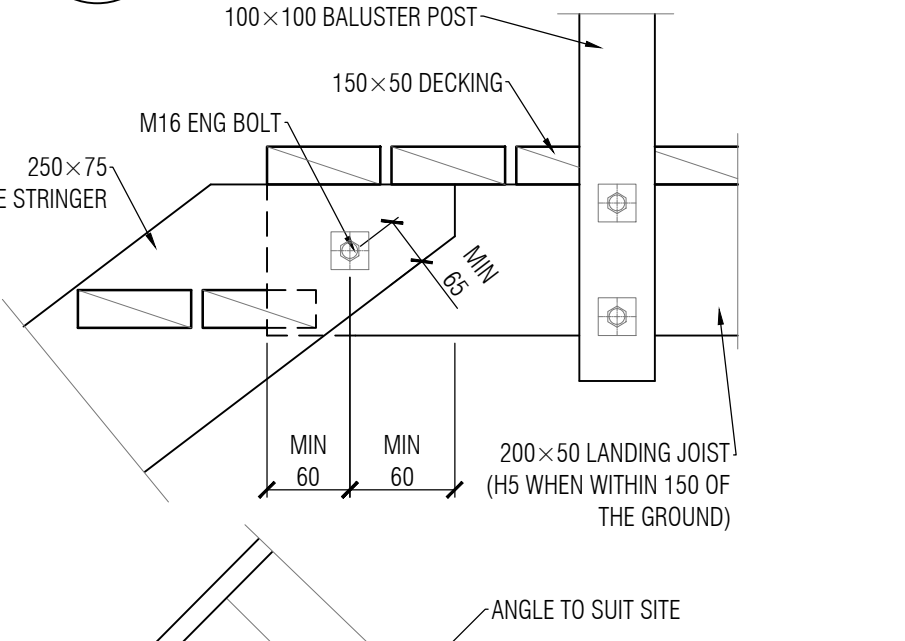
10 STAIRCASE LANDING DETAIL
SHT - 1:10 @ A3 BALUSTER AND TIE BAR OMITTED FOR CLARITY.



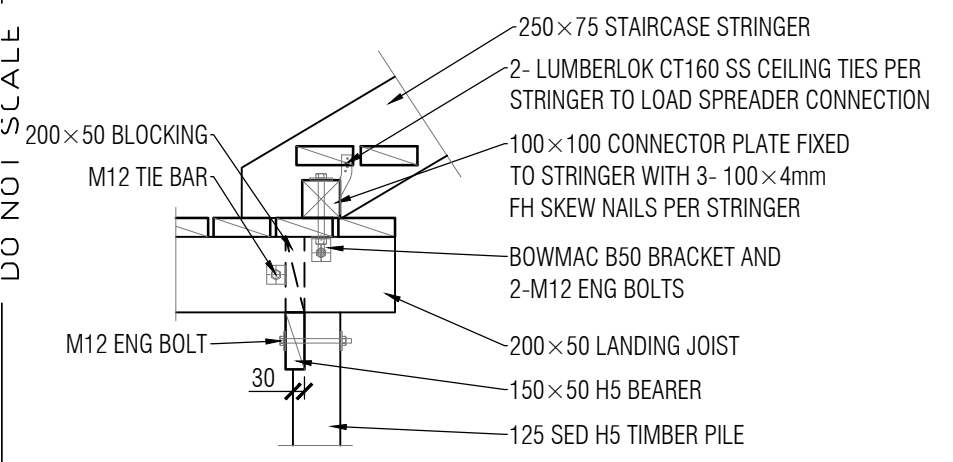
11 PILE ROCK FIXING DETAIL
SHT - 1:10 @ A3



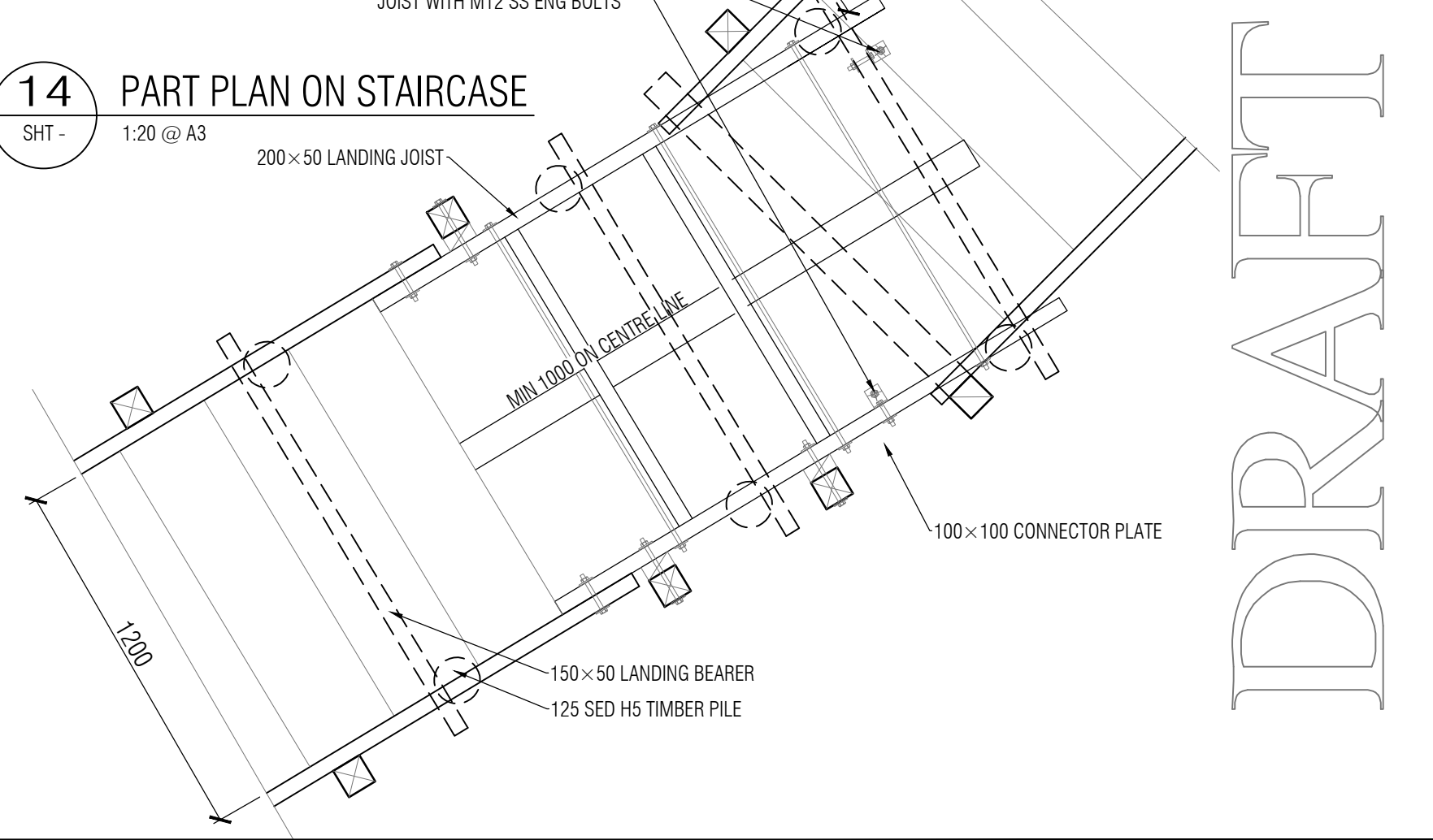
12 STRINGER TOP CONNECTION DETAIL
SHT - 1:10 @ A3



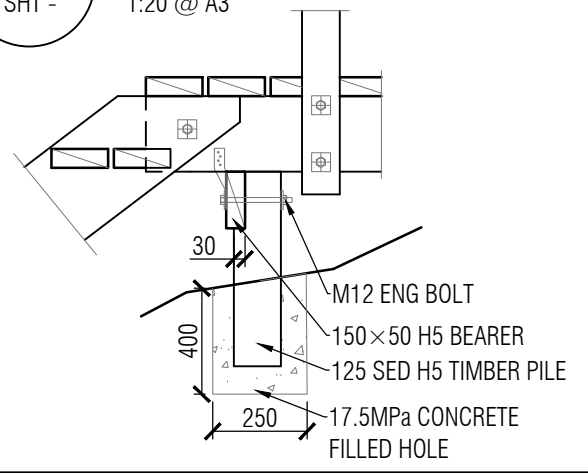
13 STRINGER BOTTOM CONNECTION DETAIL
SHT - 1:20 @ A3



14 PART PLAN ON STAIRCASE
SHT - 1:20 @ A3



15 STRINGER TOP SUPPORT DETAIL
SHT - 1:20 @ A3



DO NOT SCALE

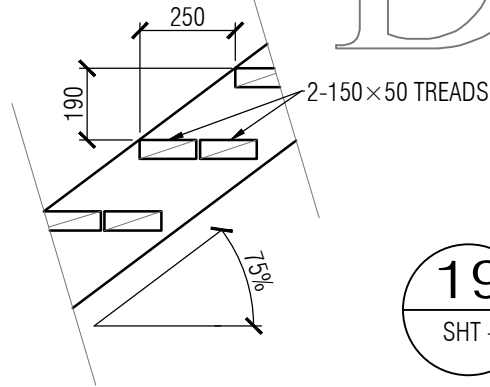
DRAFT

Rev	Date	Amendment

16 STAIRCASE TREAD DETAIL

SHT - 1:20 @ A3

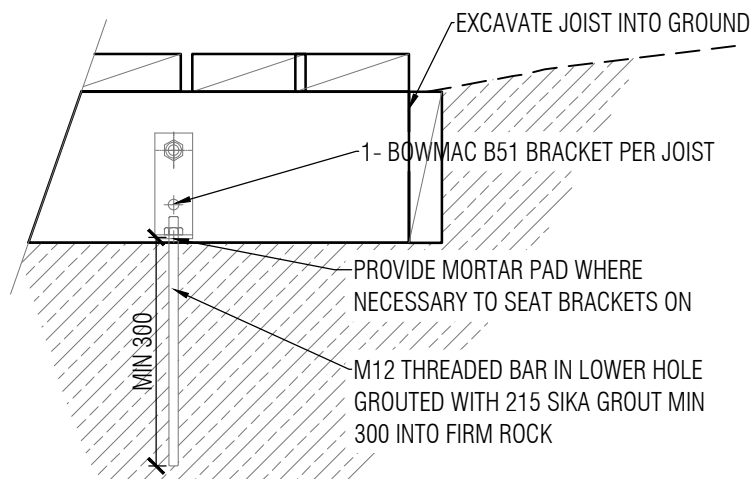
BALUSTER AND TIE BAR OMITTED FOR CLARITY.



DRAFT

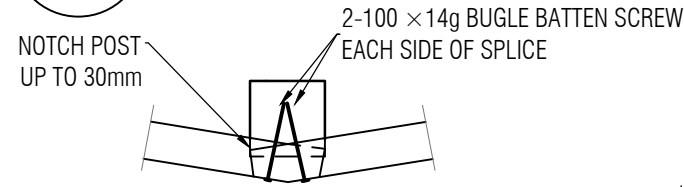
19 TOP LANDING SUPPORT DETAIL

SHT - 1:10 @ A3



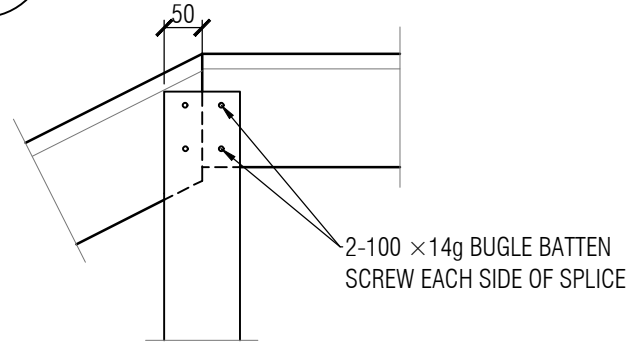
17 TOP RAIL SPLICE PLAN

SHT - 1:10 @ A3



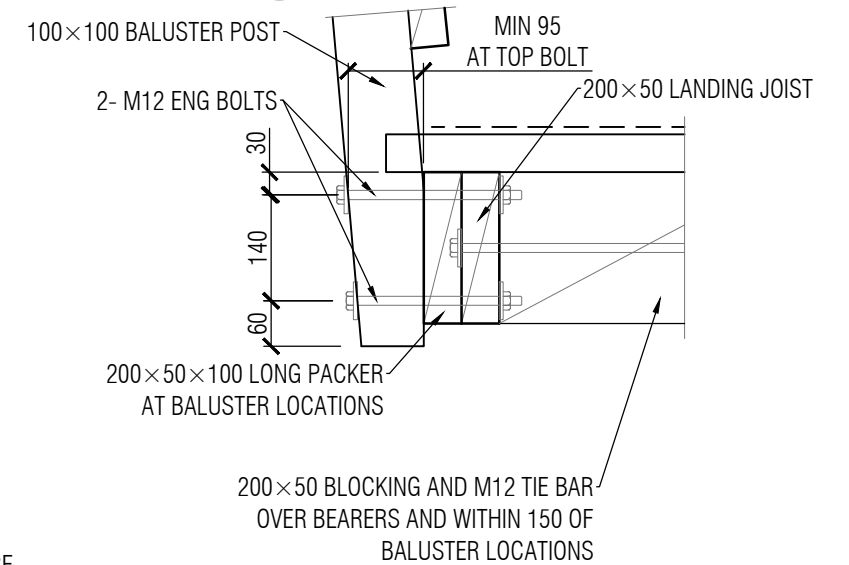
20 TOP RAIL SPLICE ELEVATION

SHT - 1:10 @ A3



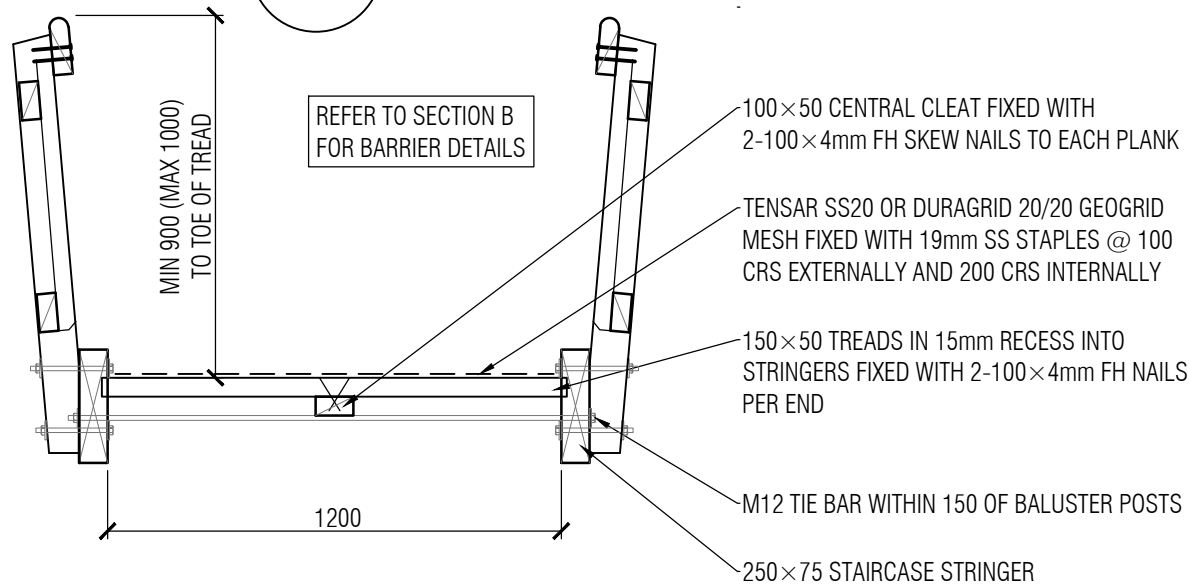
18 LANDING BARRIER CONNECTION DETAIL

SHT - 1:10 @ A3



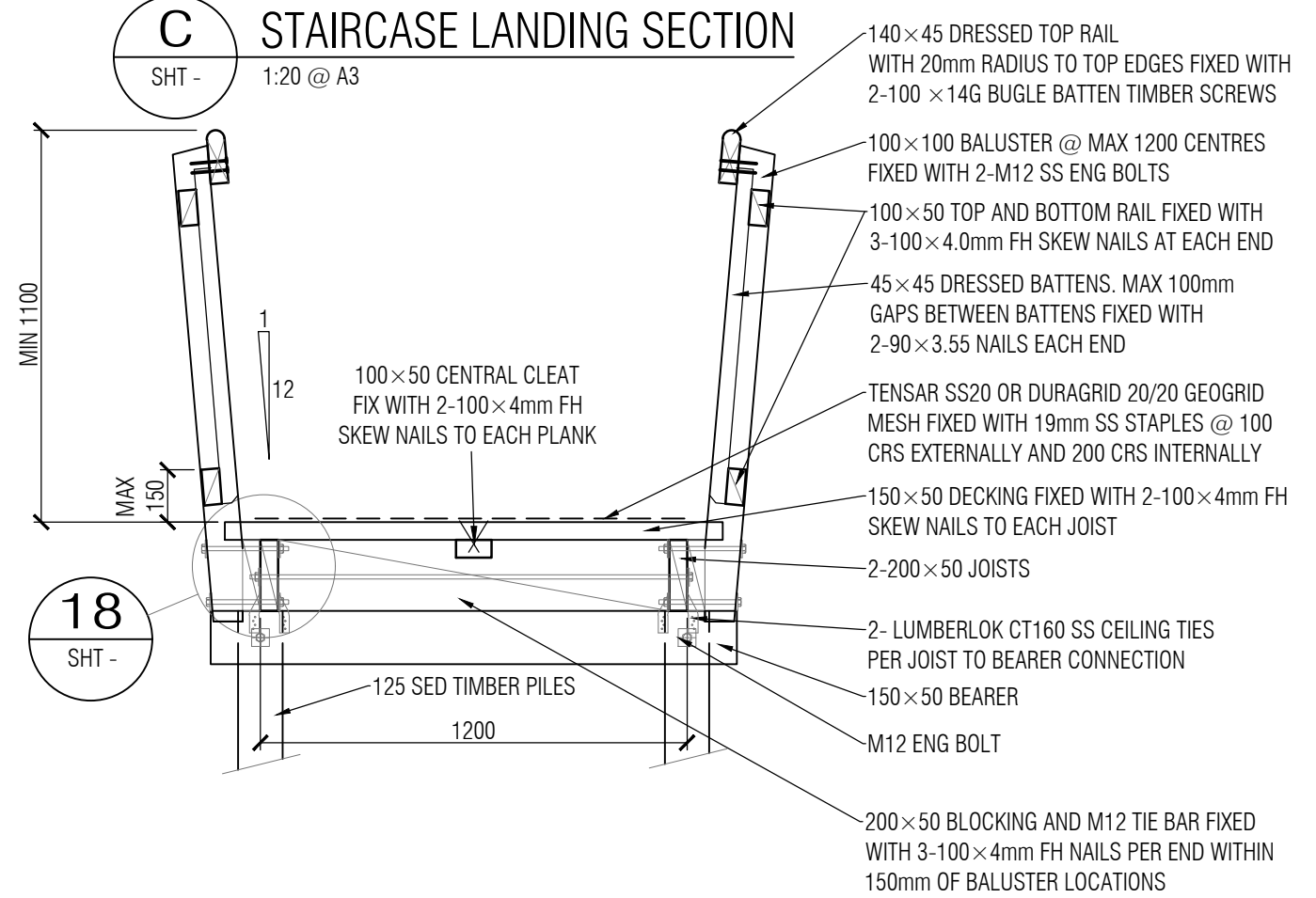
B TYPICAL STAIRCASE SECTION

SHT - 1:20 @ A3



C STAIRCASE LANDING SECTION

SHT - 1:20 @ A3



DO NOT SCALE

Frame Group Limited
 PO BOX 147211, PONSONBY, AUCKLAND 1144
 LEVEL 2, 16 COLLEGE HILL, AUCKLAND, NZ
 PHONE: 09 638 7221
 © FRAME GROUP LIMITED, 2018

PREPARED FOR
Auckland Council
 Te Kauhahara o Tamaki Makaurau

PROJECT
PUKEKIWIIRIKI Pa TRACK DEVELOPMENT

TITLE
STAIRCASE DETAILS

SCALE	AS SHOWN	DATE	JULY 2018
DRAWN	SLM	DESIGNED	TB
		FGL JOB	17/080
APPROVED		DRAWING	07
		REV	