

Demographics (optional)

We have a few optional questions which will help us understand a bit more about you.

Questions:

Please note: the following questions help us understand what groups of the community are engaging with council and all personal information will remain private.

Are you?

Female Male Gender diverse

What age group do you belong to?

Under 15 15-24 25-34 35-44
 45-54 55-64 65-74 75+

What ethnicity(s) do you identify with? (tick all that apply)

Pākehā/NZ European Māori Samoan
 Cook Islands Māori Tongan Chinese
 South East Asian Korean Indian
 Other (please specify):

Do you live in Pukekohe or Paerata?

Yes No

If not, where do you live? _____

Do you work in Pukekohe or Paerata?

Yes No

Vision

In 2017 we suggested this vision:

Pukekohe is a beautiful and flourishing satellite township, offering a mix of high quality employment, residential and recreational opportunities. Future development will ensure that Pukekohe is well-connected to the wider Auckland region, whilst celebrating the heritage and cultural values of its underlying rural character

Vision statement for consultation 2018

New growth areas will enhance Pukekohe as a focal point and place to further support the surrounding rural economy. These areas will offer a range of housing choice and employment opportunities for people at all stages of life. It will be well connected to the wider Auckland and Waikato regions, while protecting and enhancing the natural, physical and cultural values that contribute to Pukekohe's unique character and identity.

1. Do you agree with the updated 2018 vision?

Agree/Disagree

Please tell us why you think that

Land uses

2. Do you agree with the specific residential zonings suggested on the map?

Agree/Disagree

Please tell us why you think that

3. Do you agree with the potential locations for business shown on the map?

Agree/Disagree

Please tell us why you think that

4. Do you agree with the potential location for the local centre?

Agree/Disagree

Please tell us why you think that

5. What types of employment should be provided for in the business locations?

General

6. Do you have any other feedback on the Pukekohe-Paerata Draft Land Use Plan?

Need more room?

You can attach extra pages, but please include your name and contact information.



99EC-048-18

Summary and feedback form

Pukekohe-Paerata Draft Land Use Plan 2018



Have your say

Pukekohe-Paerata Draft Land Use Plan 2018

What's already happened?

In September and October 2017 Council asked for your feedback about the opportunities, issues or challenges we should consider when developing a structure plan for Pukekohe-Paerata. We also asked what you thought about a map showing some proposed mapped land uses.

You told us these matters were important:

- Transport – traffic, roading, public transport
- Infrastructure timing and staging
- Rural – Productive soils, Character and function of Pukekohe, Reverse sensitivity/interface
- Residential zoning, location, and staging
- Business land demand
- Ecology
- Open space provision
- Social infrastructure

Following your feedback we have done more work. This includes updating flood information, working with mana whenua, considering business land location and identifying potential neighbourhood and suburban park locations. We are also working with the Supporting Growth Alliance on transport options for Paerata-Pukekohe.

You can read a copy of the 2017 consultation material including background reports and a feedback summary here: aucklandcouncil.govt.nz/haveyoursay

What's happening now?

We would like some further feedback from you. We would particularly like to know what you think about our revised vision, proposed residential zonings, and employment land provision. Please see the map on the next *page and the questions on the feedback form

You can also tell us your views about transport options separately as part of the "Supporting Growth Alliance's" consultation.

supportinggrowth.govt.nz

*Note a larger map will be available at our drop-in sessions and online at aucklandcouncil.govt.nz/haveyoursay

What's happening next?

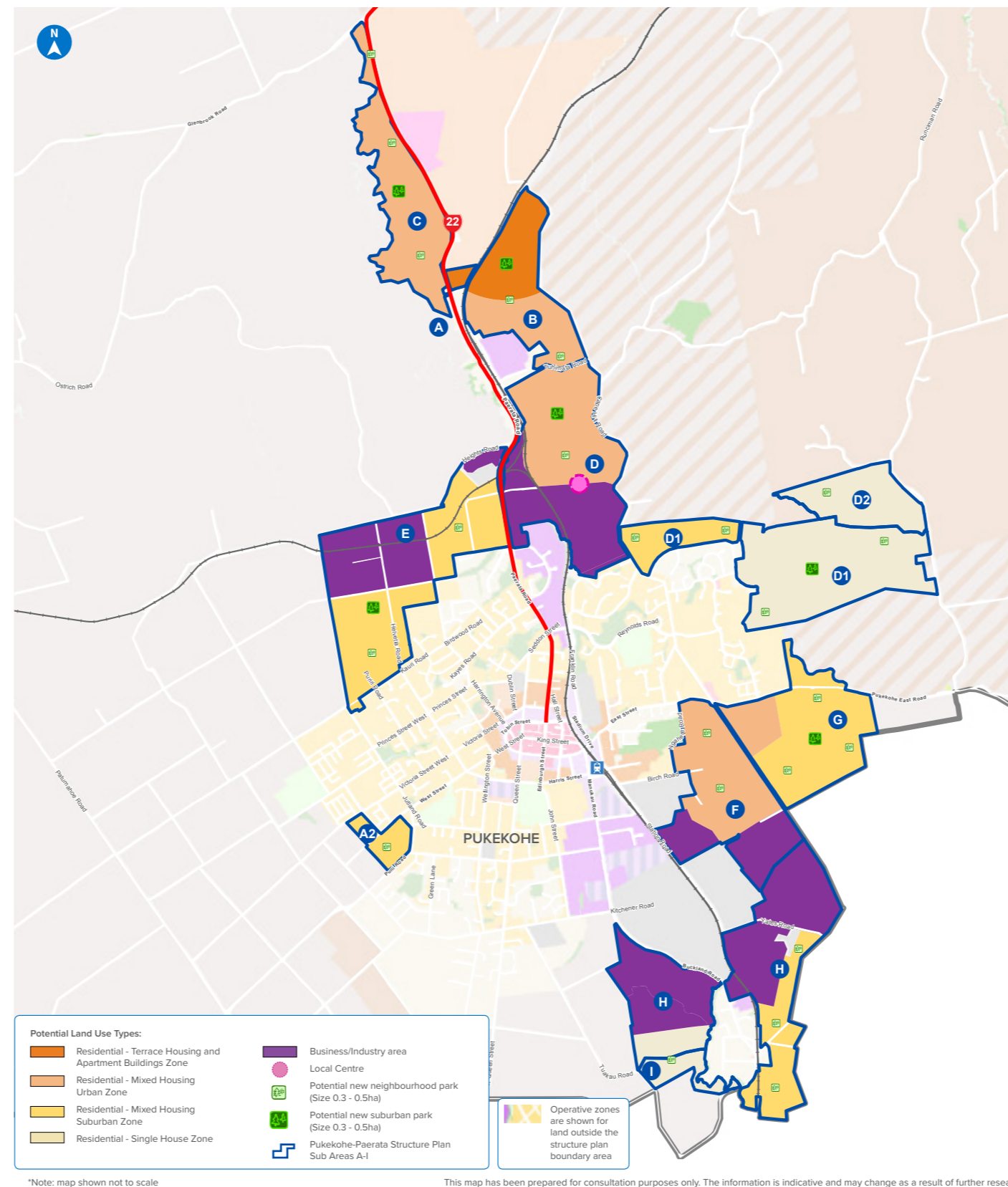
We will consider your feedback and continue working towards a draft structure plan for Pukekohe-Paerata. It is anticipated that this will be ready in 2019.

Once the draft plan is finalised, it will become the basis for Auckland Council initiated plan changes.

If you would like to give us some feedback or be on our mailing list, please fill in your details on a feedback form.



Pukekohe-Paerata Draft Land Use Plan Map



Have your say on the Pukekohe-Paerata Draft Land Use Plan 2018



Feedback opens Monday 10 September and closes Wednesday 10 October 2018

Tell us what you think about the Pukekohe-Paerata Draft Land Use Plan.

Before providing your feedback, read the summary report and supporting material available:

- online at aucklandcouncil.govt.nz/haveyoursay
- at the Pukekohe and Papakura service centres and libraries.
- phone 09 301 0101 or email southernstructureplanning@aucklandcouncil.govt.nz to be sent a copy

You can submit your feedback:

- online at www.aucklandcouncil.govt.nz/haveyoursay
- by scanning your completed form to southernstructureplanning@aucklandcouncil.govt.nz
- by dropping your completed form off at Pukekohe or Papakura service centres and libraries
- by placing your completed form in an envelope and sending to the following freepost address:

Attn: Plans and Places (Planning Central-South)

Pukekohe-Paerata Draft Land Use Plan, Freepost Authority 191615,
Auckland Council, Private Bag 92300, Auckland 1142

Your contact details

Your feedback (including your name) will be publicly available in Auckland Council reports and online, but your contact details will be kept private.

First name: _____

Last name: _____

Email address: _____

Postal address: _____

Is your feedback on behalf of an organisation or business?

Yes – I am the official spokesperson for the organisation

No – these are my own personal views

If yes, what is the name of your organisation? _____

All personal information that you provide in this feedback will be held and protected by Auckland Council in accordance with our privacy policy (available at aucklandcouncil.govt.nz/privacy and at our libraries and service centres) and with the Privacy Act 1993. Our privacy policy explains how we may use and share your personal information in relation to any interaction you have with the council, and how you can access and correct that information. We recommend you familiarise yourself with this policy