

Date: Thursday 21 February 2019
Time: 9.30am
Meeting Room: Room 1, Level 26,
Venue: 135 Albert Street
Auckland

**Ngā Hui a te Komiti Whanake Hapori me ōna
Kaupapa Āhuru /
Community Development and Safety Committee
OPEN MINUTE ITEM ATTACHMENTS**

ITEM	TABLE OF CONTENTS	PAGE
8	Safe Communities Accreditation for Auckland: Endorsement of Application	
A.	21 February 2019 Community Development and Safety Committee: Item 8 - Auckland Safe Communities Accreditation	3



Safe Communities Accreditation

- June 2016 resolution: “Auckland to become an accredited Safe Community, and write to the Safe Communities Foundation New Zealand (SCFNZ) to initiate the accreditation process” (REG/2016/33).
- Internationally recognised model (World Health Organisation recommended approach)
 - platform for collaboration to deliver evidence-based safety and injury prevention strategies at a local and regional level.



Safe Communities Accreditation

- Auckland is the largest local government authority in Australasia to seek SCA : 20 + local authorities and 50% of NZ's population is already accredited (eg Wellington & Christchurch, Melbourne also has this status).
- Application prepared by organisations with a community safety and injury prevention focus. Together formed the “Safety Collective, Tāmaki Makaurau, Auckland” (led by Council, chaired by Cr Collins).
- Application to be submitted March 2019, following approval by ECC, accreditation expected May 2019.

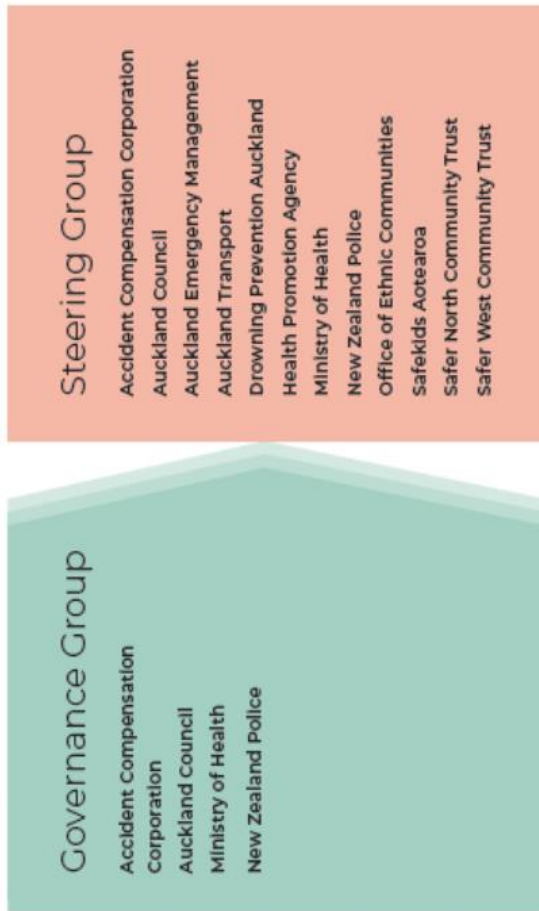


SCFNZ: “a safe community”

- is a place that is attractive to live, work and visit; a liveable community, where people can go about their daily activities in an environment that without fear, risk of harm or injury.
- increases community well-being by creating an infrastructure in local communities to increase action by building local partnerships and collaborative relationships.
- is about wellbeing, building strong, cohesive, vibrant, participatory communities.
- SCFNZ regards Auckland’s application as being ready for sign off by Council, prior to formal assessment by SCFNZ panel.



Safety Collective



The Challenge and Opportunity

Muriwai beach tragedy: Couple loved outdoor activities – daughter

The eldest child of the Muriwai couple who died while hiking at Te Anau, returned into her parents' lives the weekend...



Auckland's rampant road toll out of sync with the rest of New Zealand

Hermann Martin and Amanda Saxton • 19:06, May 20 2018



Deaths on Auckland roads are far too frequent, say international road safety experts. Auckland Transport agrees, and will put \$700 million towards lowering the city's road toll.

Drinking culture leads to emergency department - study

24 Jul, 2018 3:18pm
4 minutes to read



More restrictions on alcohol lead to lower alcohol-related injuries, the study shows. Photo / NZPA / Ross Selford

By: **Melissa Nightingale**
NZ Herald reporter based in Wellington
melissa.nightingale@herald.co.nz
@melissa_wichart



New Zealand's drinking culture has come under fire following a new study which shows a link between alcohol consumption and trips to the emergency department.

