

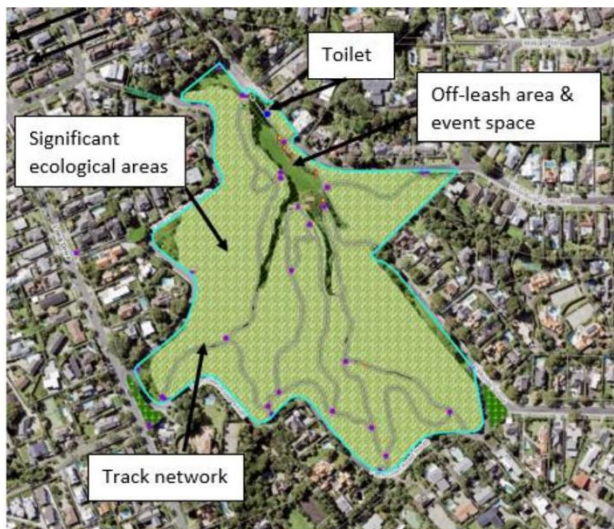
Attachment B

Recreational assessments of Category A parks in the Ōrākei Local Board area

KAURI DIEBACK - RECREATIONAL ASSESSMENT – Dingle Dell Reserve Orakei Local Board

DRAFT

**NOT COUNCIL POLICY; INTERNAL WORKING DOCUMENT
ONLY**



Site Description

Dingle Dell Reserve is located at 98 Abbotts Way, Remuera. It is a high value kauri ecosystem with possibly infected kauri trees. It is a popular reserve, zoned partly as Open Space - Conservation. It contains:

- 68,000m² of bush, which is a significant ecological area
- a local network of bush tracks
- an off-leash dog exercise area on the grass areas only
- a toilet

Key Reserve and Local Linkages

- St Johns Bush is 1700m away. It is low value kauri ecosystem with no symptomatic kauri trees
- The site is used intermittently throughout the year for music events, weddings, birthdays and picnics.

Planned developments at Dingle Dell Reserve

- None

Key Active Groups & Stakeholders

- None

Mana Whenua and heritage importance

- There is a recorded archaeological site
- The site is recorded as cultural heritage conservation area
- The Unitary Plan identifies a historic heritage and special character overlay.

Volunteer Monthly Hours

- N/A

Dingle Dell Reserve is important for local passive recreational opportunities, particularly walking. The trail network has several interlocking loops. Many of these are not directly near an identified kauri tree.

Recreational Value Score = Medium

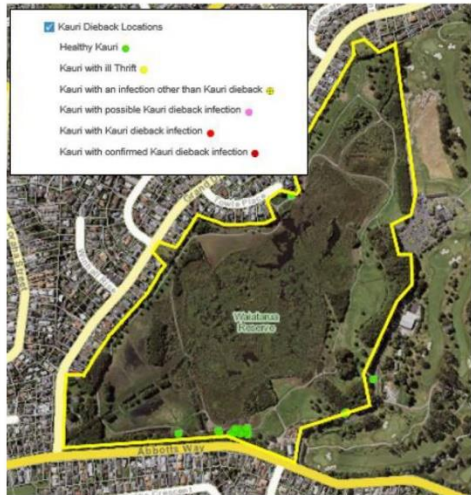
Service Outcomes:

1. Retain access to path networks throughout the reserve
2. Retain use of open space for informal recreation and small events
3. Retain use of the off-leash dog exercise area
4. Protect heritage and mana whenua values

KAURI DIEBACK - RECREATIONAL ASSESSMENT – Waiaatarua Reserve

Orakei Local Board

DRAFT
 NOT COUNCIL POLICY; INTERNAL WORKING DOCUMENT
 ONLY



Site Description

Waiaatarua Reserve is located at 98 Abbots Way, Remuera. It is a medium value kauri ecosystem with non-symptomatic kauri trees. It is a popular reserve, zoned partly as Open Space - Conservation. It contains:

- 82,300m² of bush, which is a significant ecological area
- 144,000m² of wetland
- a network of footpaths around and through the wetland
- a playground and skate half pipe
- open space for passive recreation
- an off-leash dog exercise area
- 2 active community groups

Key Reserve and Local Linkages

- Priority greenway routes 4 and 5 pass through the reserve and adjacent to the reserve along Abbots Way
- Waiaata Reserve is 2000m away, St Johns Bush is 1300m away. Both these parks have low value kauri ecosystems with no symptomatic kauri trees
- The site is used intermittently throughout the year for events for dogs, orienteering and running.

Planned developments at Waiaatarua Reserve

- A Waiaatarua Reserve enhancement plan is currently being developed. Its aims are likely to include environmental and amenity improvements
- A frisby golf course has been proposed for Waiaatarua Reserve and is being considered.

Key Active Groups & Stakeholders

- The Friends of Waiaatarua Reserve carry out pest control and ecological restoration
- The Men's Shed community group leases the old depot building.

Mana Whenua and heritage importance

- The whole reserve is a site and place of significance to mana whenua
- The wetland (swamp) is a recorded cultural heritage site
- Regionally and locally significant volcanic viewshafts of Mt Wellington and One Tree Hill cross the park.

Volunteer Monthly Hours
 500 hours over 12 months.

There are diverse passive recreational opportunities in Waiaatarua Reserve. It is particularly popular with walkers, runners and dogs-walkers. The trail network is predominantly gravel and sealed paths through areas of grass open space. Volunteer ecological restoration activities operate within the bush areas. The greenway connection is a useful off-road link in the Remuera area.

Recreational Value Score = **High**

Service Outcomes:

1. Retain access to path networks throughout the reserve
2. Retain access to the playground and skate half pipe
3. Retain use of open space for informal recreation
4. Retain use of the passive areas as an off-leash dog exercise area
5. Continue volunteer ecological restoration activities
6. Protect heritage and mana whenua values