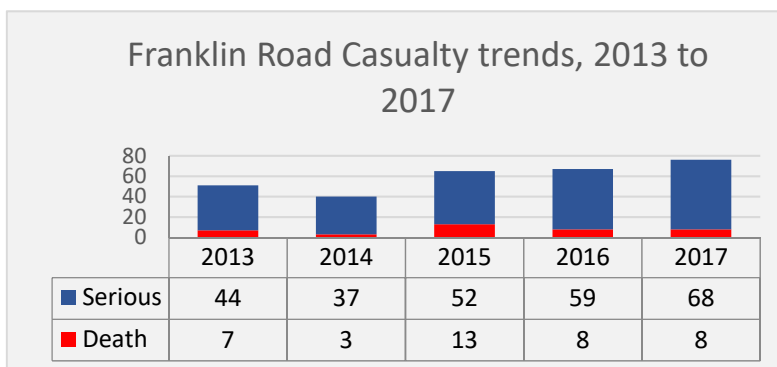


1. Auckland's DSi rates have increased between 2014 and 2017 as outlined in the table below.

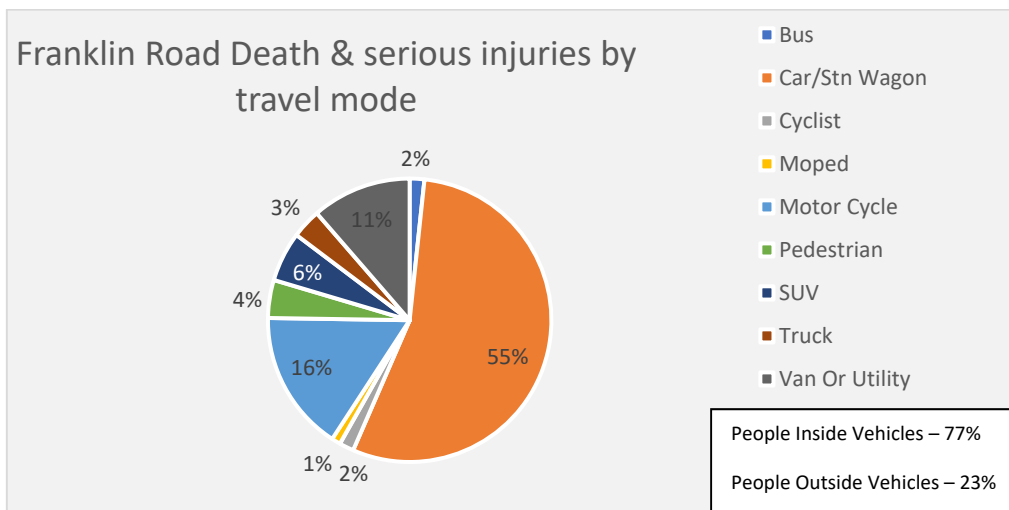
Auckland Region	2014	2015	2016	2017
Deaths	36	52	46	64
Serious injuries	447	568	618	749

2. **Franklin Local Board area:** While the Franklin Local Board area DSi made up 9% of all Auckland DSi in 2017, it has increased 49% from 51 people in 2013 to 76 people in 2017. Franklin Local Board had the second highest level of DSi among rural local boards in 2017, and the highest rate of serious road injuries per capita, out of the three rural local boards in 2016.

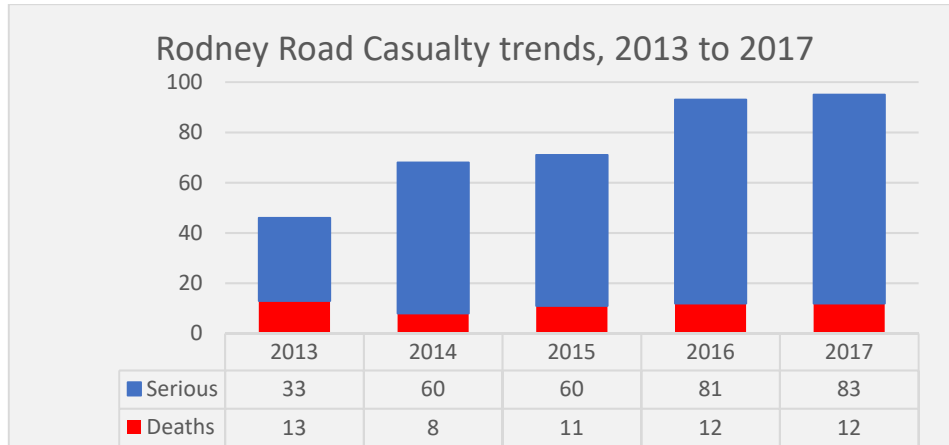
- 3.



4. Within the Franklin Local Board area, 23% of all DSi involved vulnerable road users.



5. **Rodney Local Board** road deaths and serious injuries (DSi) have increased 107% from 2013 to 2017 and made up 12% of Auckland's total DSi in 2017. Rodney Local Board had the highest level of DSi among all local boards in 2017 and the fifth highest rate of serious road injuries per capita, out of all local boards in 2016.



6. In the Rodney Local Board area 28% of all DSI involved vulnerable road users.

