

**Beach Haven and Birkdale Community Houses**

**Quarter 2 – December –March 2019 Summary**



**What activities/programmes have been started / run within this quarter?**

**New groups - Beach Haven**

- Nest parenting Courses

**New Groups - Birkdale**

- Qi Gong
- Certificate in money management – Lead by Tw Wananga o Aoteroa
- Boomarang Bags

**New Groups that BBCP supports to use the hall**

Infinite Wellness- Boot camps

**What activities/programmes/events weren't successful within this quarter? Give an explanation why.**

Nil

**Highlights for this quarter?**



**Volunteers.**

Our volunteers still continue to be the heart of the project. We offer flexible volunteering opportunities for all to enjoy.

Photo is of the 1<sup>st</sup> meeting of the year.

**Celebrating Communities**

**Beach Haven Birkdale**

A month long celebration of local connection of the community.





**01 VERRAN PRIMARY FRIDAY FIESTA**  
5:00-8:00pm // Verran Primary School, 136 Verran Rd, Birkdale  
A family-friendly evening of fun! Food stalls, games, bouncy castle, garden bar, arts n' crafts and face-painting.

**06 QI GONG**  
9:00-10:00am // Birkdale Community House Lawn, 134 Birkdale Rd, Birkdale  
Join us for a free introductory session of this gentle exercise designed to improve the flow of energy - Qi - in the body. Every Wednesday during March.

**07 PRESCHOOL PLAY**  
10:00-12:00pm // Tai Park, Rambler Cres, Beach Haven  
Bring your preschooler along and have a play with the toys.

**LOST YOUR HOJO AND WANT IT BACK?**  
6:30-8:00pm // Birkdale Community House, 134 Birkdale Rd, Birkdale  
What would you like your life to be like? If you have lost your 'mojo', let's get it back! Free Women's Workshop.

**08 SUMMERTIME MUSIC**  
5:30pm // Opaketai Gardens, Beach Haven  
Come and enjoy some music in the garden featuring Soul Sax Plus.

**KAURI PARK PRIMARY END OF SUMMERTIME FESTIVAL**  
5:00pm // Kauri Park Primary, 16 McGlashan Pl, Beach Haven  
Food, entertainment and fun activities for all the family. Come along and help us see out the end of the season in style!

**COMMUNITY DINNER**  
6:00pm // Beach Haven Community House, 130 Beach Haven Rd  
An opportunity to enjoy company and Middle Eastern food prepared by the Wise Collective. RSVP to houses@birkdalebeachhaven.org.nz

**09 PRIDE OF BEACH HAVEN MARKETS**  
8:00-10:00pm // Beach Haven Hall, 336 Rangitira Rd  
Local friendly market selling white elephant, Jewellery, crafts, art, tools, homeward goodies and live music. To book your space call Neil 09 480 8059.

**15 SUMMERTIME MUSIC**  
5:30pm // Opaketai Gardens, Beach Haven  
Come and enjoy some music featuring Marc and the Silverbeats.

**BERKDALE BEACH HAVEN COMMUNITY PHOTOGRAPHY COMPETITION**  
15th March 7:00pm-9:00pm & 16th March 10:00-2:00pm // Beach Haven Hall, 336 Rangitira Rd  
Free to enter, the competition allows everyone to share how they see the communities of Beach Haven and Birkdale and our environment. All entries must be made by 9am Sunday 10 March.

**16 SOAP MAKING FOR BEGINNERS**  
2:00-4:00pm // Kaipatiki Environment Centre, 17 Lauderdale Rd, Birkdale  
Learn how to make fresh, allergy-free and non-toxic pure soap products.

**MEMORIES OF BEACH HAVEN AND BIRKDALE**  
2:00-3:30pm // Beach Haven Hall, 336 Rangitira Rd  
The Beach Haven Gold Rush and other stories - Three long-time local residents will tell us their fascinating stories about past days in Beach Haven and Birkdale.

**UPCYCLED GARDEN SCULPTURE COMPETITION IN OPAKETAI GARDEN**  
10:00-4:00pm // Opaketai Beach Haven Garden, 364 Rangitira Rd, Beach Haven (Bad weather alternative Beach Haven Hall)  
Create a garden sculpture using recycled/upcycled materials. Competition is open to all Beach Haven and Birkdale residents. Sculpture must be safely freestanding and easily moveable by 1 to 2 people. Placement of sculptures to occur from 9:00am to 9:45am. Prize-giving at 12:00pm.

**17 COMMUNITY KIDS MARKET**  
10:00-1:00pm // Beach Haven Community House, 130 Beach Haven Rd  
Designed especially for kids to sell art, craft, creations and unwanted toys, games and clothes. Bunkers wanted, 30 minute time slots. \$5 stall holder fee. Bookings essential, visit [eventbrite.com/communitykidsmarket](http://eventbrite.com/communitykidsmarket)

**ST PATRICK'S DAY AFTERNOON TEA AND HOOLEY**  
2:00-6:00pm // Beach Haven Hall, 336 Rangitira Rd  
Everyone is welcome to come along and celebrate St Patrick's Day with food, music and good company from the community. Please rsvp to Neil on 09 480 8059.

**18 MOTHER TO MOTHER**  
6:30-9:00pm // Birkdale Community House, 134 Birkdale Rd, Birkdale  
A safe space for mothers to express themselves so they feel connected and a sense of belonging. A free introductory session.

**19 RAISING THE DOUGH**  
6:30-8:30pm // Kaipatiki Environment Centre, 17 Lauderdale Rd, Birkdale  
Learn about funding streams for not for profits, and how to create the perfect pitch.

**LOST YOUR HOJO AND WANT IT BACK?**  
6:30-8:00pm // Birkdale Community House, 134 Birkdale Rd, Birkdale  
What would you like your life to be like? If you have lost your 'mojo', let's get it back! Free Women's Workshop.

**22 NOWRUZ**  
10:30-11:30am // Birkdale Hall, 136 Birkdale Rd  
Join us for a short movie to learn about and celebrate the Iranian New Year.

**NEIGHBOURS DAY AOTEAROA**  
22-31 March  
Visit [neighboursday.org.nz](http://neighboursday.org.nz) for some great ways to connect with your community.

**23 DOT PAINTING WORKSHOP**  
10:00-1:00pm // Beach Haven Community House, 130 Beach Haven Rd  
2 day workshop over 2 Saturdays 23rd and 30th of March. An amazing opportunity to learn the creative art of Dot Painting from an accomplished local Artist. No experience required. \$60 Bookings essential, visit [www.eventbrite.com/98dotpainting](http://www.eventbrite.com/98dotpainting)

**24 BEACH HAVEN FUN RUN / WALK 2019**  
9:00-1:00pm // Lower fields at Shepherds Park  
Fantastic local fun run/walk (1km and 5km) focused on getting active together as a community and celebrating our beautiful coastal track. Food and entertainment available before and after the races. Annual local fun run/walk (1km and 5km); race starts 10:50am.

**24 WINTER GARDENING**  
10:00-12:00pm // Kaipatiki Environment Centre, 17 Lauderdale Rd, Birkdale  
Learn about soil fertility, crop rotation and edible selection for winter.

**SUMMERTIME MUSIC**  
5:30pm // Opaketai Beach Haven Garden, 364 Rangitira Rd, Beach Haven  
Come and enjoy some music in the garden featuring Soul Sax Plus.

**25 ENGLISH CONVERSATION CIRCLE**  
10:00-12:00pm // Birkdale Community House, 134 Birkdale Rd, Birkdale  
Join us for a free introductory conversation circle celebrating Neighbour's Day NZ. All levels welcome!

**26 PRESCHOOL PLAY**  
10:00am // Inwards Reserve, Solisbury Rd, Birkdale  
Bring your preschooler along and have a play with the toys.

**27 PRESCHOOL PLAY**  
10:00am // Tai Park, Rambler Cres, Beach Haven  
Bring your preschooler along and have a play with the toys.

**29 HEAD, HANDS AND HEARTS, HIGH TEA AND ENTERTAINMENT AT THE HOUSE FOR 60'S+**  
12:00pm // Beach Haven Community House, 130 Beach Haven Rd  
High tea and entertainment at the house for 60's +. A time to connect with other folk in the community. Free event please call 09 483 9942 to book your space.

**30 KIDS SOFT TOY MAKING WORKSHOP**  
10:00-2:00pm // Birkdale Community House, 134 Birkdale Rd, Birkdale  
Come along and sew a soft toy to take home with you. Spaces limited, booking essential, visit [eventbrite.com/88softtoyworkshop](http://eventbrite.com/88softtoyworkshop) for ages 8+





Birkdale Beach Haven  
**Community  
Project Inc**  
*We Belong Here | Nō konei ake tātou*

## Newcomers Meal

Friday night at Beach Haven House was made extra special with our Community Dinner, thanks to a combined effort from Birkdale Beach Haven Community Project INC, Auckland North Newcomers Network, and WISE Catering. A wonderful community event.



### "Where the Fairies Live - Kaipātiki"

There are 111 fairy doors to find across the Kaipātiki Local Board area, divided into 5 entry forms! These can be view/download on the Kaipātiki local board face book page or pick up hard copies from your local community centre.

To enter, you simply need to find the park, locate the door, record the door number on the entry form

beside the corresponding park.

All doors are located close to the pathway, so please don't trample our planted green spaces. There are no doors in any parks closed for kauri dieback prevention.

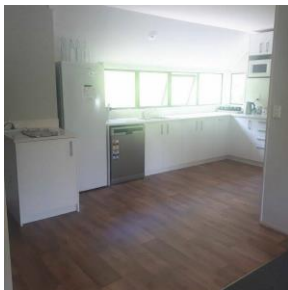
BBCP applied for the funding through local board, coordinated the project and has supported other house to succeed. Each door has been hand painted by local community members. There are 18 billboards as pictured below around the KLB area.



### Community Christmas

Community members fundraise during the year and put on a lovely Christmas lunch with music and entertainment at Beach Haven House. Over 80 people attended this event.

### New Kitchen at Beach Haven



Through Auckland Council Re Newals Beach Haven House received a new kitchen over Late Jan early Feb. The project managers were a pleasure to deal with. We are more than happy with the finished kitchen.



Above. Top right – Friday Ukulele, Top right. Te Wananga Open days at Birkdale house. Bottom Right – Valentine’s day weddings at Birkdale House and Right – The first boomerang bag made at Birkdale House.

**During this quarter, did you have any issues, concerns, complications?**



Still no heating/cooling at Birkdale house. Our team deals with complaints about this nearly every day.

**Did you have anything start, or new opportunities come up this quarter, not expected on the work plan?**

We continue to support the growth of the Auckland North Newcomers network.

**Below the line activities not funded by Council**

**Kaipatiki Business networking**

A casual chat for business owners to network and get to know each other, for community groups to meet local business owners.

Local business owners doing business locally and interacting with local community groups as a way to grow business, community and help each other in "the hood"

BBCP has been involved since the beginning of this local initiative as we believe there is a lack in links between business and community and there is space to share skills and business to utilise the houses for meetings.