

Draft Tāmaki Open Space Network Plan

CONSULTATION FEEDBACK OVERVIEW FINAL REPORT

TOTAL SUBMISSIONS RECEIVED: 461

Plan Overview

Maungakiekie-Tāmaki Local Board want to hear your thoughts on the Draft Tāmaki Open Space Network Plan.

A sustainable quality open space network for the Tāmaki area means that future development and anticipated growth in the area will be well catered for, ensuring that the community has access to a range of recreational, social, cultural and environmental experiences.

The information in this report summarises feedback received from Tuesday 11 September 2018 to Monday 22 October 2018

Executive Summary

- 36% of submitters enjoyed the green spaces and nature the most in parks across Tāmaki, whereas 28% of submitters thought that the facilities were the worst part of the parks due to lack of maintenance.
- 24% made it clear that by regularly maintaining and updating these facilities it would improve activities that take place in the parks.
- 338 submitters stated that by having maintained and monitored toilets in the parks that it would improve safety.
- 163 submitters stated that by implementing cycleways and improved pathways across the parks that it could encourage them to walk or cycle more.
- 297 submitters would like to see inclusive playgrounds for all ages and abilities in their local parks.
- Aveline Place and Maybury reserve had the highest amount of support for land exchanges with 81%.

Note - Te Huruhi Trust/Grace International made a submission and they stated that it included 300 members, no unique signatures were provided with this submission though.

Feedback Breakdown

Most submissions were received via hard copy feedback forms (82%), with (17%) coming from online forms and the rest coming from e-mail non-forms (1%). The Majority of submissions were from individuals (95%) but 21 submissions (5%) were from organisations.

We also received 341 comments from events held around Auckland. (These can be seen at the end of the report and the number of comments received per question is labelled 'Other Feedback' throughout the report).

WHO WE HEARD FROM

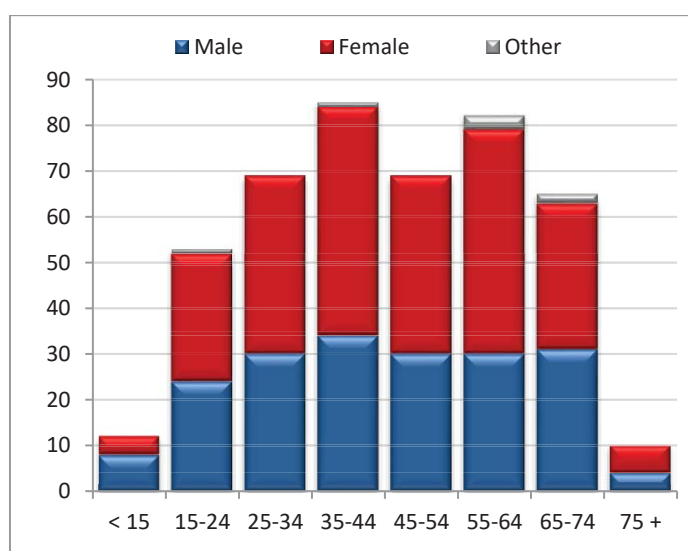
The table below indicates the total number of submissions received by the local board that submitters live in.

| LOCAL BOARD AREA | Individuals | Organisations | Total | Percentage |
|---------------------|-------------|---------------|------------|-------------|
| Maungakiekie-Tāmaki | 360 | 18 | 378 | 81% |
| Mangere-Otahuhu | 16 | 1 | 17 | 4% |
| Orakei | 11 | 1 | 12 | 3% |
| Other | 27 | 0 | 27 | 6% |
| Not supplied | 26 | 1 | 27 | 6% |
| TOTAL | 440 | 21 | 461 | 100% |

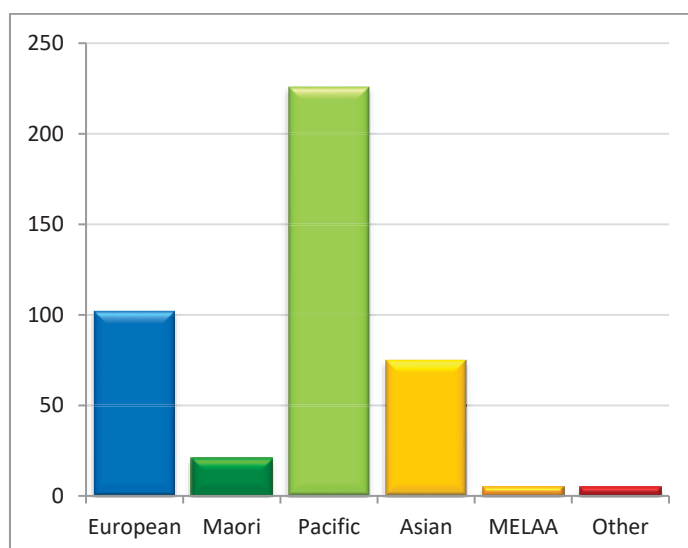
The tables below indicate the demographic information people identified with when provided, i.e. the graphs only include a breakdown of those that provided demographic information.

| AGE | Male | Female | Other* | Total | % |
|--|------|--------|--------|------------|-------------|
| < 15 | 8 | 4 | 0 | 12 | 3% |
| 15 – 24 | 24 | 28 | 1 | 53 | 12% |
| 25 – 34 | 30 | 39 | 0 | 69 | 16% |
| 35 – 44 | 34 | 50 | 1 | 85 | 19% |
| 45 – 54 | 30 | 39 | 0 | 69 | 16% |
| 55 – 64 | 30 | 49 | 3 | 82 | 18% |
| 65 – 74 | 31 | 32 | 2 | 65 | 15% |
| 75 + | 4 | 6 | 0 | 10 | 2% |
| Total submitters providing data | | | | 445 | 100% |

* Includes gender diverse and not provided



| ETHNICITY | # | % |
|--|------------|-----------|
| European | 102 | 23% |
| Māori | 21 | 5% |
| Pacific | 226 | 52% |
| Asian | 75 | 17% |
| Middle Eastern/Latin American/African | 5 | 1% |
| Other | 5 | 1% |
| New Zealander/Kiwi | 4 | 1% |
| Total submitters providing data | 435 | NA |

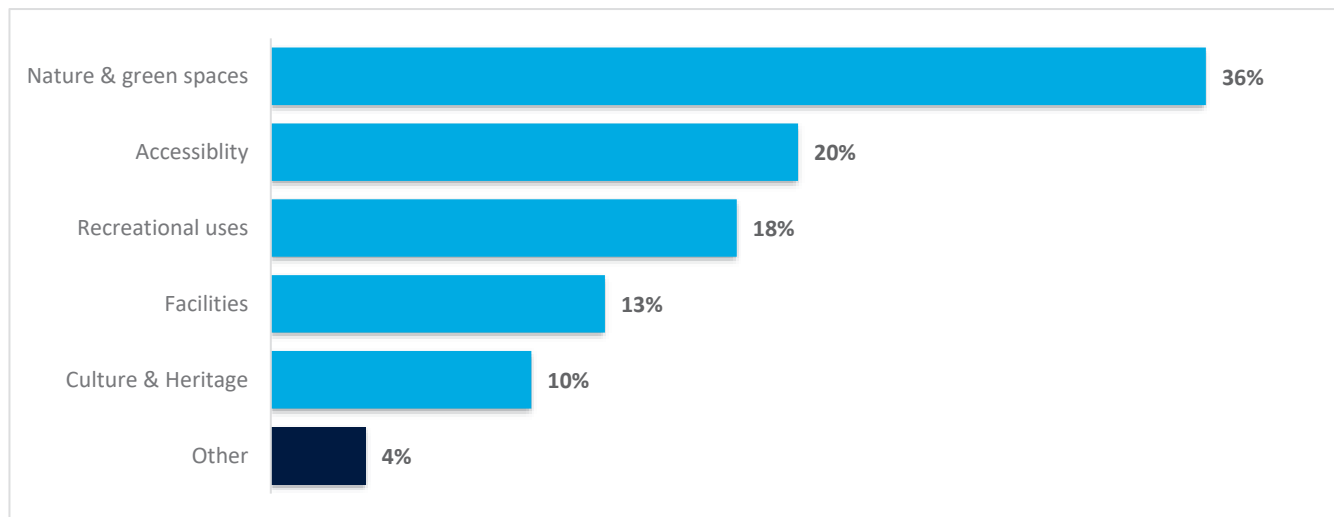


CONSULTATION FEEDBACK

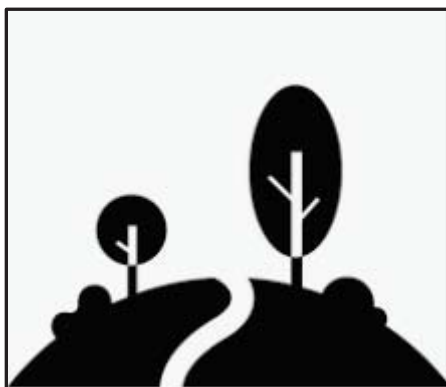
Q1. Please tell us what you like most about the existing parks in Tāmaki?

Submitters were asked what they liked most about the parks in Tāmaki.

(n= 305 respondents)



* The main theme coming out of 'Other' was open space.



43% of comments stated easy access to open/green spaces was what they liked the most about the parks

OTHER FEEDBACK

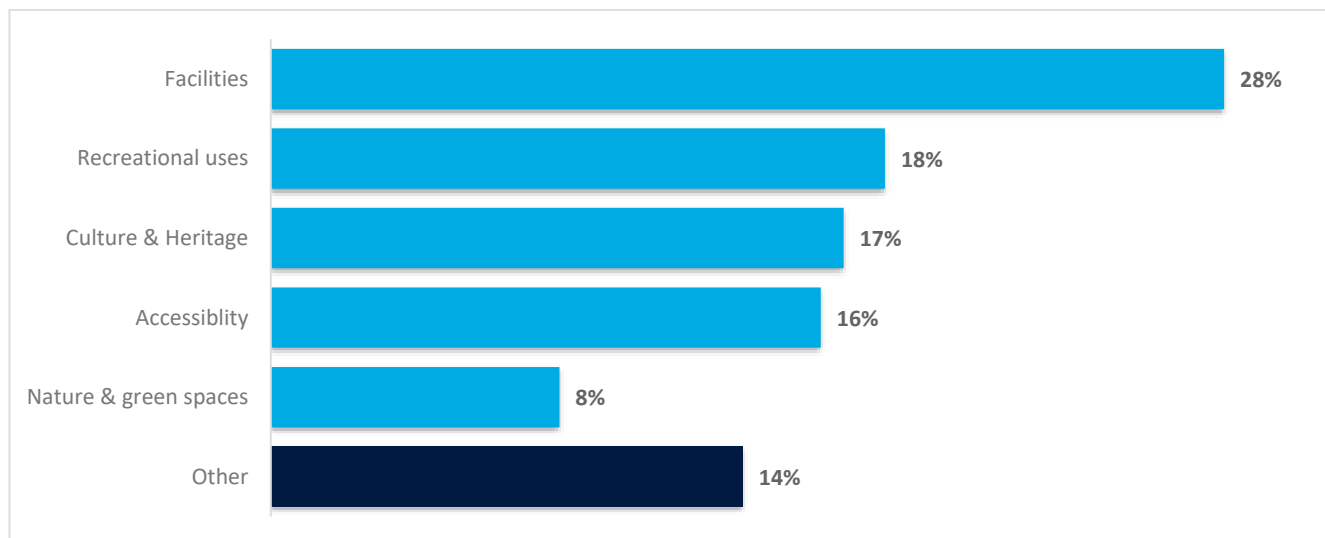
| CHANNEL | NO. OF COMMENTS |
|--------------|-----------------|
| Event | 6 |
| Total | 6 |

6 comments liked that the plant species are native and suitable for controlling run off in parks



Q2. Please tell us what you don't like most about the existing parks in Tāmaki?

Submitters were asked what they don't like most about the parks in Tāmaki.
(n= 208 respondents)



* The main theme coming out of 'Other' was safety and security.



30% of comments stated having unclean and broken facilities is what they disliked the most about the parks

OTHER FEEDBACK

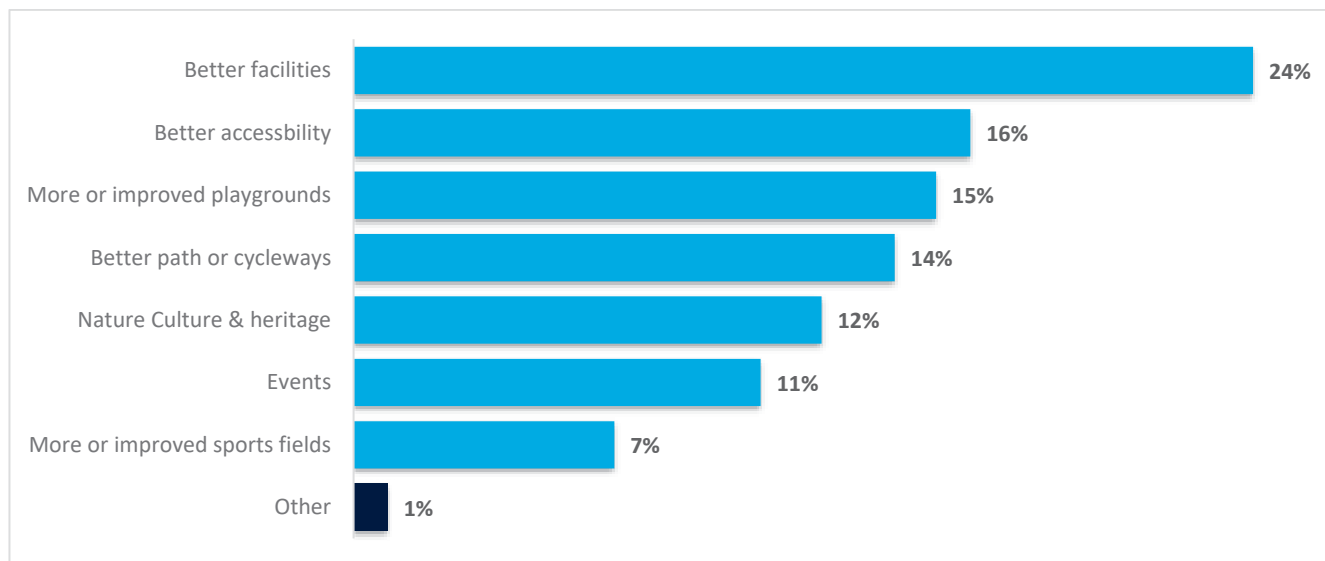
| CHANNEL | NO. OF COMMENTS |
|--------------|-----------------|
| Event | 45 |
| Total | 45 |

22 comments disliked the parking around the parks



Q3. How could we improve activities that take place in parks in the Tāmaki area?

Submitters were asked how we could improve activities that take place in the parks.
(n= 369 respondents)



* The main theme coming out of 'Other' was safety and security.



17% of comments stated that improved safety measures would improve activities that take place in parks

OTHER FEEDBACK

| CHANNEL | NO. OF COMMENTS |
|--------------|-----------------|
| Event | 1 |
| Total | 1 |

1 comment thought increasing areas of useable open spaces by installing BBQ's etc would improve activities in the parks.



Q4. How do you think parks in Tāmaki could be made safer?

Submitters were asked how we could make parks safer.
(n= 338 respondents)

338 submitters think that having clean, secure and accessible toilets would make the parks safer



| SAFETY INITIATIVES | TOTAL |
|--|-------|
| Clean, secure, easily accessible toilet facilities that are maintained and monitored | 338 |
| Good lighting so that people can see and be seen | 335 |
| Surveillance cameras for security | 295 |
| General visibility of the entire space | 257 |
| More houses overlooking the park | 138 |
| *Other | 38 |

* The main theme coming out of 'Other' was better fences.

OTHER FEEDBACK

| CHANNEL | NO. OF COMMENTS |
|--------------|-----------------|
| Event | 0 |
| Total | 0 |

Q5. What might make you consider walking or cycling to your local parks more often?

Submitters were asked what would make them consider walking or cycling to the local parks.
(n=163 respondents)

163 submitters think easier access to walking/cycle ways would make them consider walking or cycling to local parks



| WALKING OR CYCLING INITIATIVES | TOTAL |
|--|-------|
| Easier access to walking/cycle ways | 163 |
| Better lighting for safety and security | 118 |
| More access to local businesses on the way | 62 |
| Paths that connect destinations together | 55 |
| Greenery and trees on the way | 46 |
| Nothing | 4 |
| *Other | 26 |

*The main theme coming out of 'Other' was improved safety.

OTHER FEEDBACK

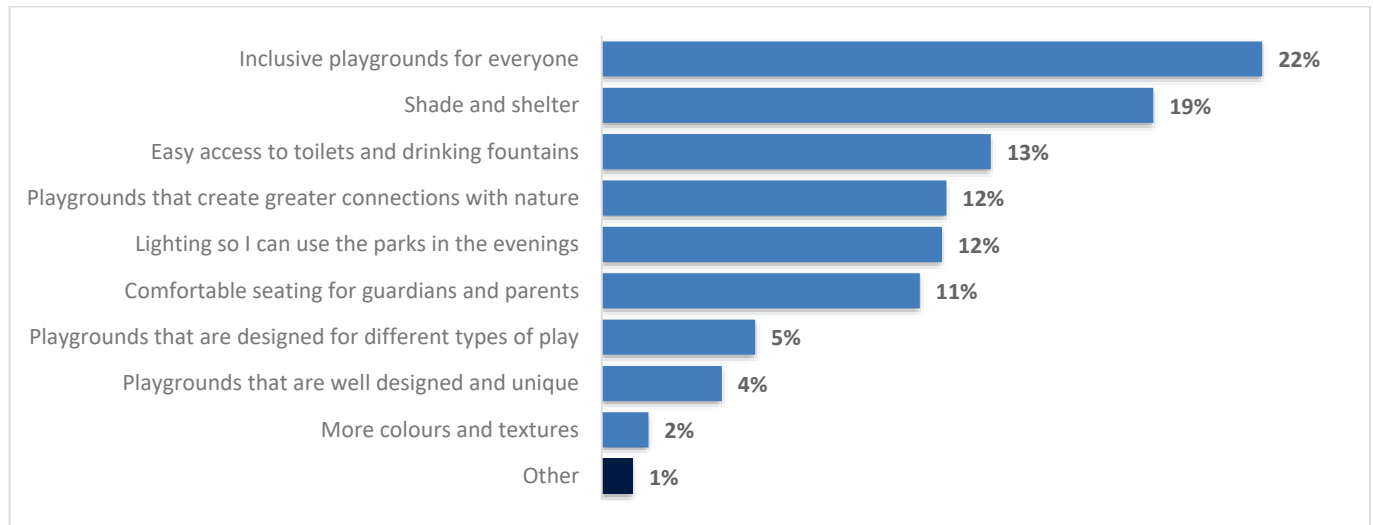
| CHANNEL | NO. OF COMMENTS |
|--------------|-----------------|
| Event | 6 |
| Total | 6 |

5 comments agreed that better accessibility to cycleways and pathways is the right way to go



Q6. What do you want to see in the new playgrounds that are proposed as part of the Tāmaki Open Space Network Plan?

Submitters were asked what they wanted to see in new playgrounds.
(n=297 respondents)



297 submitters want to see inclusive playgrounds for everyone as part of the Tāmaki Open Space Network Plan

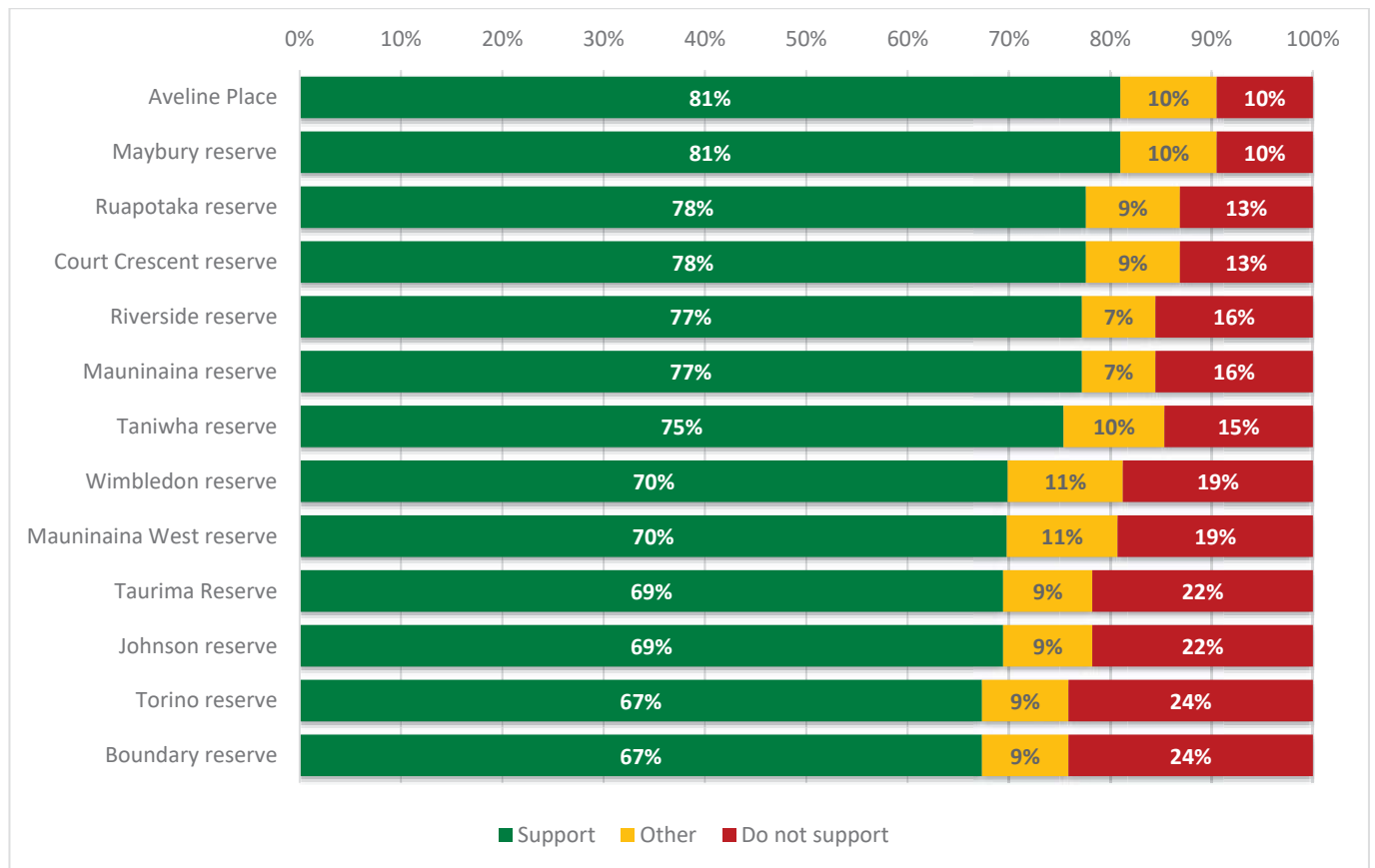


| NEW PLAYGROUND INITIATIVES | TOTAL |
|---|------------|
| Inclusive playgrounds for everyone | 297 |
| Shade and shelter | 248 |
| Easy access to toilets and drinking fountains | 175 |
| Playgrounds that create greater connections with nature | 155 |
| Lighting so I can use the parks in the evenings | 153 |
| Comfortable seating for guardians and parents | 143 |
| Playgrounds that are designed for different types of play | 69 |
| Playgrounds that are well designed and unique | 54 |
| More colours and textures | 21 |
| *Other | 14 |

*The main theme coming out of 'Other' was safety and security.

Q7a. On reviewing the draft plan and map, how do you feel about the proposed land exchanges shown in the plan for the following reserves?

Submitters were asked how they felt about the proposed land exchanges.
(n=200 respondents)



OTHER FEEDBACK

| CHANNEL | NO. OF COMMENTS |
|--------------|-----------------|
| Event | 12 |
| Total | 12 |

11 comments stated that Boundary reserve needed green spaces whilst there is heavily dense development happening in surrounding areas



Q7b. If you are not satisfied with the proposed land exchanges near you, please identify the parks names and explain why you are concerned?

Submitters were asked why they were not satisfied with the proposed land exchanges.

(n=77 respondents)

| RESERVE | MAIN THEME(S) |
|------------------------------|---|
| Aveline Place | No comments |
| Boundary reserve | Flood risk and concerns for development |
| Court Crescent reserve | Loss of land and loss of views |
| Johnson reserve | Safety concerns for new reserve |
| Mauinaina reserve | Loss of space |
| Mauinaina West reserve | Land will be too narrow |
| Maybury reserve | No benefit to the community |
| Riverside reserve | Loss of views |
| Ruapotaka reserve | No comments |
| Taniwha reserve | Location issues and too many bridges |
| Taurima reserve | Reduced park sizes and concerns for development |
| Torino reserve | Loss of a park and concerns for development |
| Wimbledon reserve | Loss of land and connectivity to wildlife |
| Other (non reserve specific) | Grow green open spaces for future not shrink them |

OTHER FEEDBACK

| CHANNEL | NO. OF COMMENTS |
|--------------|-----------------|
| Event | 137 |
| Total | 137 |

137 comments stated they did not wish to lose parks/open spaces during the land exchanges and if anything needed more open spaces



Q8. Are there any more comments you would like to share with us about this draft plan?

Submitters were asked why for any other comments about the draft plan.
(n=98 respondents)



The majority of submitter comments were aimed towards creating more and developing existing green and open spaces. The reasons vary from wanting more open space for kids to play and to improve the community's health and the need for them with the rise in population

OTHER FEEDBACK

| CHANNEL | NO. OF COMMENTS |
|--------------|-----------------|
| Event | 134 |
| Total | 134 |

55 comments stated that the consultation period was not long enough and should have been extended further in order to read all the available information



APPENDIX

| SUBMISSION NUMBER | NAME OF ORGANISATION |
|-------------------|---|
| 27 | South Auckland Income Planning Service |
| 55 | Island child charitable trust |
| 71 | Waiokairi Bay Rangers |
| 75 | Tamaki Samoa |
| 80 | Cornwall Cricket Club |
| 87 | S.P.A Church |
| 112 | Tamaki Samoa |
| 127 | Te Huruhi Trust/Grace International |
| 168 | Grace International Church |
| 171 | Remuera Samoan SDA |
| 190 | Remuera Church |
| 200 | Tamaki Estuary Environment Forum |
| 202 | Panmure Business Association |
| 205 | Tamaki Residents Network |
| 212 | Waitakere Outrigger association |
| 215 | Carey College |
| 227 | Auckland Football Federation |
| 236 | Panmure Community Action Group |
| 244 | H.Y.P.E |
| 283 | Panmure Chinese Association |
| 291 | Glen Innes Chinese Friendship Group Inc |
| 332 | Rock of Ages A06 Church |

| Event Feedback Comments | No. Of Comments |
|--|-----------------|
| Plant type species that are native/suitable for controlling run off | 6 |
| Parking - allow 4 per house as children grow up and we need parking for children and visitors | 11 |
| Parking - within units instead of using reserve land | 11 |
| Once we found out about the land exchanges real estate agents approached us about selling our properties | 11 |
| Facilities - not inviting | 11 |
| Safety | 11 |
| Flax plants in reserves - need to be removed | 1 |
| Improve open space quality - increase areas of useable open space e.g. install BBQs in parks/open spaces | 1 |
| cycleways/pathways - better accessibility is a step in the right direction | 6 |
| Boundary Reserve: - need green areas while there is such heavily dense developments happening in Pt England; the aesthetics of the building will not fit with the unitary plan scope of the surrounding area | 11 |
| Dunkirk and Riverside reserves - need more parking for sports games | 1 |
| Concerned about diminishing of open spaces - large tracts of land with no open space; we should be aiming for an INCREASE in open spaces | 13 |
| Don't touch our parks! | 1 |
| No loss of land in Panmure | 11 |
| Boundary Reserve: - blocking out sunlight if build up apartments, look and feel will look out of place in comparison to rest of Point England | 11 |
| Boundary Reserve: - we are a young family who moved to the area to enjoy the green areas and open spaces. Our little ones play there - PLEASE DON'T take it away. | 11 |
| Maintain reserves | 11 |
| Density - need more open space to counter/corporate | 11 |
| Boundary Reserve - don't swap this land - facility | 11 |
| Don't exchange land in GI for Panmure | 11 |
| Court Crescent - cricket, no parity in the exchange, needs maintenance - do not exchange | 11 |
| Need to develop Torino and Court Crescent reserves not give it away | 1 |
| Panmure cannot afford to lose any land in this area | 33 |
| Drainage reserves are necessary - planned, cannot afford to lose these to buildings. | 1 |
| Improve connectivity - build a facility or centre that caters for multicultural groups (e.g. Burmese, Pacific, etc) to enable them to fully participate, celebrate and contribute to the community. Network of communities learning about NZ life. | 1 |
| TRC - after good solid land | 11 |
| Public notices for consultation - too short - not enough to let community know | 11 |
| No canvassing has been done | 11 |
| Land to be exchanged is prime real estate land - commercial gain for TRC | 11 |
| Please extend the closing date - we have not had sufficient time to process and digest this change - thank you | 11 |
| Apartments create crime/look untidy/scruffy over time - do we need them? | 11 |
| Apartments ruins the atmosphere of an area - make housing 2 storey only! | 11 |
| If houses are built on reserves make sure there's still enough green spaces and if possible only 2 storeys/not block existing houses. | 6 |
| Parking - build parking within the units so that frees up land that would otherwise be used for parking | 6 |
| Extend cut off date by 2 weeks | 33 |
| Wai-o-taiki Reserve - why is it not a priority? This area is rich in birdlife (55 species of bird in the area); wardens/volunteers look after it for council and want to see this prioritised | 1 |
| Intensification will put a lot of pressure on facilities - need more open spaces to cater for predicted growth | 13 |
| Will Pt England stay as it is or will we lose it? If it stays what will you do about it. | 1 |
| Are there plans to include seating and shaded areas in parks? | 1 |

| Event Feedback Comments | No. Of Comments |
|---|-----------------|
| In the re-design of parks are there plans to include things that reflect multicultural communities in Tamaki? | 1 |
| Does the local board have a conservation plan for birds in Tohunga Torea Reserve and Panmure Basin? | 1 |
| What land was gifted by citizens to council? | 11 |
| Why are real estate agents door knocking our property to purchase for development? | 11 |