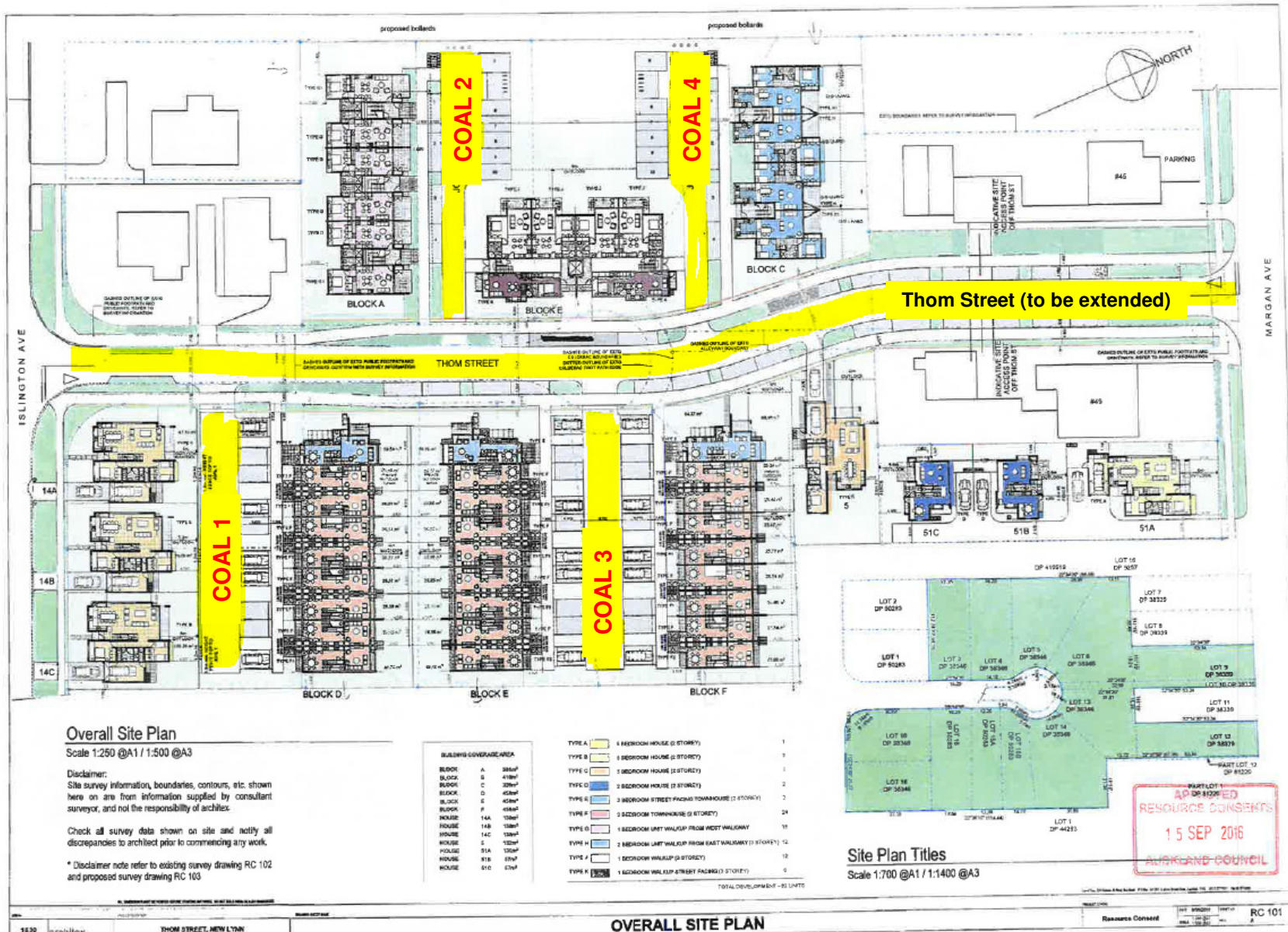


Attachment A: Site Plan for Thom Street, New Lynn



Overall Site Plan
Scale 1:250 @A1 / 1:500 @A3

Disclaimer:
Site survey information, boundaries, contours, etc. shown here on are from information supplied by consultant surveyor, and not the responsibility of architect.

Check all survey data shown on site and notify all discrepancies to architect prior to commencing any work.

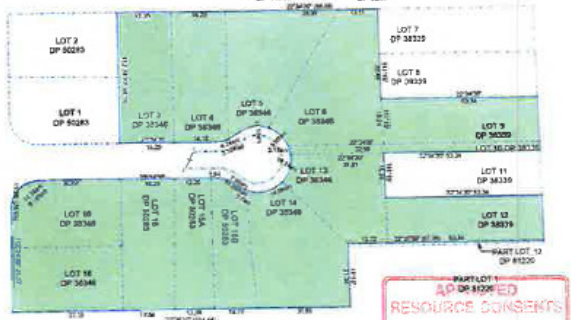
* Disclaimer note refer to existing survey drawing RC 102 and proposed survey drawing RC 103

BUILDING COVERAGE AREA

BLOCK A	386sq
BLOCK B	419sq
BLOCK C	329sq
BLOCK D	458sq
BLOCK E	458sq
BLOCK F	458sq
HOUSE 14A	138sq
HOUSE 14B	138sq
HOUSE 14C	138sq
HOUSE 5	125sq
HOUSE 51A	125sq
HOUSE 51B	125sq
HOUSE 51C	125sq

TYPE A	4 BEDROOM HOUSE (2 STOREY)	1
TYPE B	3 BEDROOM HOUSE (2 STOREY)	3
TYPE C	3 BEDROOM HOUSE (2 STOREY)	1
TYPE D	2 BEDROOM HOUSE (2 STOREY)	2
TYPE E	2 BEDROOM STREET FACED TOWNHOUSE (2 STOREY)	2
TYPE F	2 BEDROOM TOWNHOUSE (2 STOREY)	24
TYPE G	1 BEDROOM UNIT WALKUP FROM WEST WALKWAY	18
TYPE H	1 BEDROOM UNIT WALKUP FROM EAST WALKWAY (2 STOREY)	12
TYPE I	1 BEDROOM WALKUP (2 STOREY)	12
TYPE J	1 BEDROOM WALKUP STREET FACED (2 STOREY)	6

TOTAL DEVELOPMENT - 93 UNITS



Site Plan Titles
Scale 1:700 @A1 / 1:1400 @A3

AP DP 81006
RESOURCE CONSENTS
15 SEP 2016
AUCKLAND COUNCIL

OVERALL SITE PLAN