

Tim Higham

From: Gulf Journal <contributions=gulfjournal.org.nz@mail153.suw12.mcsv.net> on behalf of Gulf Journal <contributions@gulfjournal.org.nz>
Sent: Thursday, 8 December 2016 12:18 p.m.
To: Tim Higham
Subject: Gulf Journal December 2016

GULF JOURNAL
KŌRERO O TE MOĀNA

DECEMBER 2016

[view this email in your browser](#)



Mayor John Tregidga,
Chair, Hauraki Gulf Forum

It is great to see the proposed Hauraki Gulf marine spatial plan launched after more than three years' work by the Sea Change Tai Timu Tai Pari Stakeholder Working Group.

Listening to members of the working group, it is clear how much commitment, careful enquiry and respectful engagement they have brought to their task.

The proposed plan identifies five pathways aimed at creating long-term health and wellbeing for the marine park:

- Transitions to create high value wild caught and farmed fisheries which recognise the Gulf and its produce as a taonga.
- Creation of marine reserves and protected areas and scaled up investment in restoration initiatives.
- The setting of load limits for sediment and nutrients, and investment of sediment traps and stabilisation.
- A mechanism for mana whenua and communities to work together to define local-scale coastal management.
- Ambitious engagement with the 'hearts and

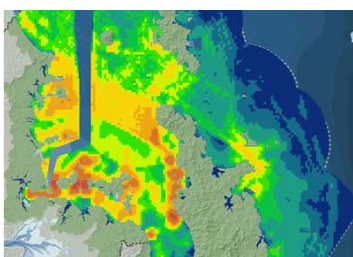
minds' of all Gulf users.

This is the integration and ambition we have been seeking and I'm pleased see the plan being welcomed by the [Ministers of Conservation, Primary Industries and Environment](#)

This issue of the Gulf Journal looks at the big moves in the plan and compiles news from around the marine park.

Best wishes for the holiday season.

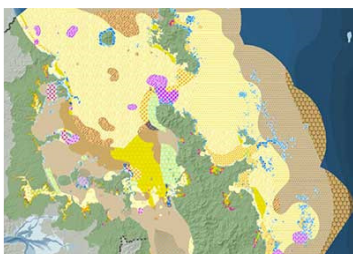
John



Transition to high value wild caught and farmed fisheries

Phased withdrawal of bulk harvesting and new aquaculture areas.

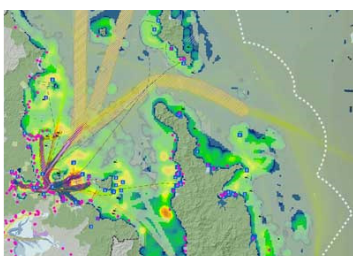
[READ FEATURE](#)



Restoring lost ecosystem function

New protected areas and scaled up restoration.

[READ FEATURE](#)



Responding to local need and pressures

Novel mechanism to provide for mana whenua and communities.

[READ FEATURE](#)