

Attachment B: Submission detail

Submission detail

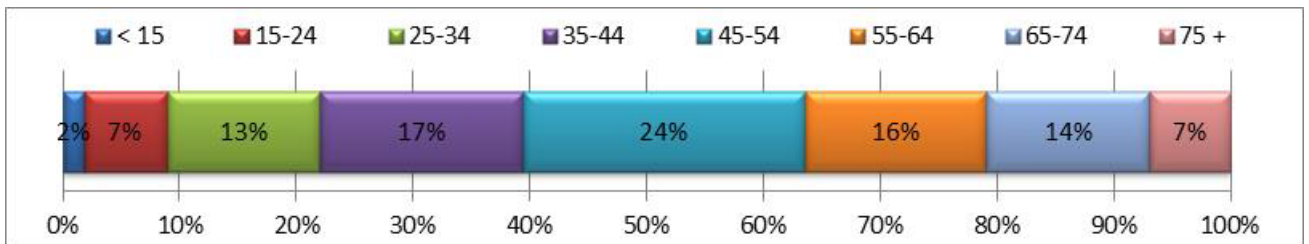
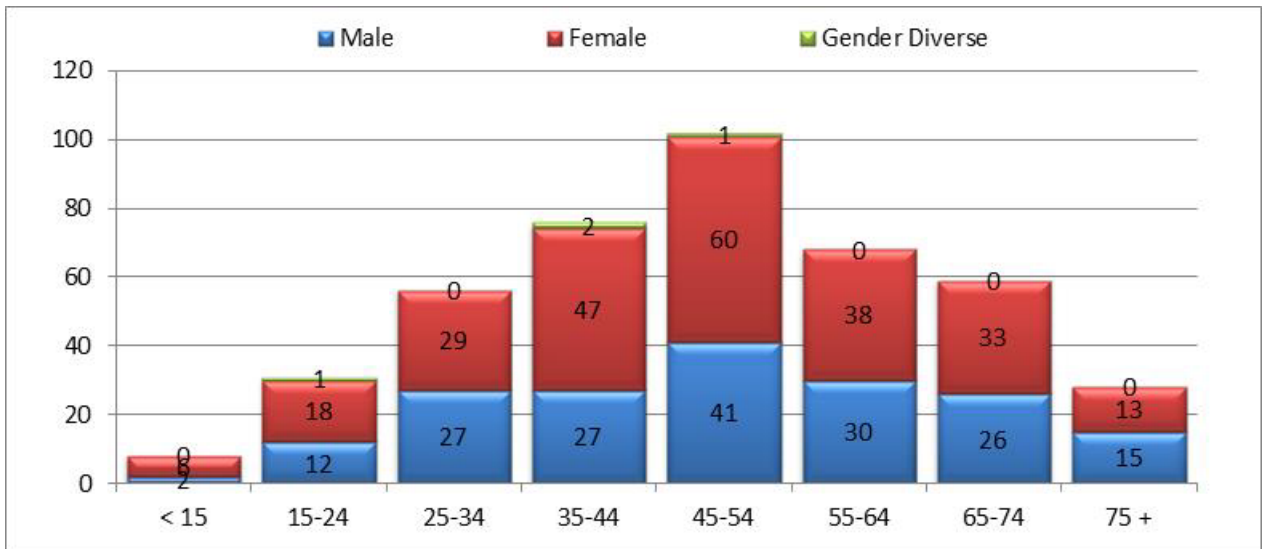
Submission type	No.	%
A. Online form	154	32%
B. People's Panel form	172	36%
I. AUSA Link form	15	3%
C. Post Our Auckland form	28	6%
D. Post form	71	15%
E. Post non form	1	0%
F. Email Our Auckland form	12	2%
G. Email form	16	3%
H. Email non form	13	3%
Total	482	100%

Submitter group	No.	%
An individual	470	98%
Multi individual	0	0%
Organisation	12	2%
Iwi/Maori group	0	0%
Total	482	100%

Demographic profile of submissions

Gender	No.	%	Age	No.	%
Male	181	42%	< 15	8	2%
Female	247	57%	15-24	31	7%
Gender diverse	4	1%	25-34	57	13%
			35-44	76	17%
	432		45-54	105	24%
			55-64	68	16%
			65-74	61	14%
			75 +	30	7%
				436	

Ethnicity	#	%
European	333	78%
NZ European	307	72%
Other European	26	6%
Maori	31	7%
Pacific	7	2%
Samoan	3	1%
Tongan	3	1%
Other Pacific	1	0%
Asian	77	18%
Chinese	50	12%
Indian	13	3%
Other Asian	14	3%
African/Middle Eastern/Latin	5	1%
Other	6	1%
New Zealander/Kiwi	4	1%
Other	2	0%
Total people providing ethnicity	427	107%



*Submitters were able to select more than one ethnicity, and therefore the percentage totals more than 100%.

Submissions which included comments, for each question

In your opinion, have we got our priorities right for this local board area in 2017/2018?			
	Yes	No	Partial
Submission number	248, 505, 1790, 2029, 2101, 2121, 2235, 2249, 2364, 2455, 2480, 2509, 2809, 3253, 4035, 4090, 4975, 5190, 5592	486, 750, 935, 943, 1463, 1497, 1707, 2012, 2265, 3114, 3176, 3275, 3642, 3645, 3875, 4073, 5145, 5185, 5954	43, 82, 271, 339, 386, 436, 579, 585, 873, 1200, 1276, 1567, 1569, 1574, 1664, 1676, 1735, 1775, 1865, 2047, 2080, 2095, 2135, 2271, 2306, 2457, 2631, 2859, 2943, 3053, 3125, 3163, 3180, 3239, 3277, 3294, 3297, 3390, 3398, 3416, 3603, 3613, 3707, 3869, 3870, 3902, 3914, 4042, 4058, 4079, 4081, 4084, 4085, 4107, 4961, 5180, 5348, 5393, 5412

Advocate to the Governing Body for funding to develop a high-quality nine hole course to progress the implementation of the Chamberlain Park Master Plan				
	Yes	No	Not sure	
Submission number	669, 847, 930, 1370, 1435, 1610, 1676, 1735, 1775, 1790, 1865, 2012, 2029, 2135, 2167, 2235, 2364, 2467, 2631, 2690, 2809, 3688, 3738, 3892, 4090, 4912, 4938, 4961, 5174, 5190, 5412, 5549	<p>Keep current golf course</p> 248, 486, 854, 943, 1419, 1513, 1567, 1703, 1918, 2021, 2080, 2265, 2797, 2859, 2957, 2989, 3053, 3092, 3144, 3155, 3176, 3297, 3435, 3603, 3613, 3642, 3698, 3719, 3750, 4252, 4254, 4549, 4910, 4976, 5185, 5386, 5393, 5400, 5439, 5440, 5442, 5443, 5444, 5445, 5592, 5713, 6001	<p>Do not provide for golf in the future</p> 135, 216, 259, 873, 876, 1135, 1508, 1596, 1774, 1891, 2271, 2432, 2446, 2457, 2488, 2509, 2512, 2534, 2795, 3005, 3163, 3253, 4042, 4129, 5476	<p>Other</p> 82, 271, 339, 1200, 1366, 1427, 1469, 1569, 2374, 2867, 2884, 3135, 3275, 3390, 3875, 3886, 4073, 4085

Expansion of the Uptown Business Association			
	Support	Do not support	Not sure
Submission number	259, 669, 805, 943, 2029, 2271, 2457, 2480, 3053, 3398, 4035, 4097,	82, 486, 871, 1716, 1735, 1775, 1941, 2095, 2154, 2249, 2859, 3275, 3875	339, 1419, 1427, 1435, 1454, 1508, 1742, 1989, 2012, 2080, 2101, 2135, 2235, 2374, 2796, 3114, 3253, 3294, 3297, 3390, 3427,

5412

3517, 4042, 5549

Advocate to the Governing Body for light rail as a preferred mass transit solution for central Auckland

	Yes	No	Not sure
Submission number	82, 106, 145, 160, 216, 259, 339, 340, 505, 873, 937, 943, 993, 1375, 1427, 1610, 1676, 1735, 1742, 1790, 1865, 1939, 2021, 2022, 2029, 2080, 2135, 2235, 2265, 2271, 2364, 2374, 2431, 2455, 2498, 2631, 2690, 2809, 2859, 2989, 3135, 3155, 3163, 3253, 3277, 3297, 3390, 3398, 3603, 3794, 3886, 3892, 4035, 4071, 4090, 4938, 5190, 5348, 5412, 5476	99, 361, 413, 445, 464, 486, 669, 755, 1342, 1363, 1366, 1508, 1513, 1548, 1703, 1775, 1891, 2074, 2101, 2154, 2509, 2795, 2867, 2957, 3053, 3077, 3111, 3114, 3125, 3176, 3180, 3275, 3517, 3875, 4073, 5185, 5393	271, 633, 1419, 1454, 1716, 1954, 2012, 2249, 2412, 2457, 2506, 3239, 3416, 3914, 4078, 4139, 5549, 5592

Issue 1: Rates increases

	Balance about right	Do more with higher rates	Do less with lower rates
Submission number	585, 2107, 3613, 3661, 4252, 4976	43, 76, 106, 135, 158, 160, 177, 216, 235, 306, 323, 361, 446, 520, 599, 616, 646, 656, 695, 750, 865, 873, 876, 877, 908, 930, 968, 993, 997, 1073, 1155, 1159, 1186, 1366, 1370, 1435, 1497, 1567, 1569, 1601, 1603, 1626, 1688, 1735, 1774, 1865, 1891, 1918, 1954, 2021, 2047, 2080, 2283, 2306, 2322, 2469, 2627, 2631, 2716, 2736, 2751, 2809, 2834, 2972, 2990, 3005, 3163, 3239, 3253, 3398, 3416, 3528, 3603, 3624, 3645, 3678, 3808, 3892, 3914, 3957, 4058, 4087, 4090, 4139, 4181, 4554, 4583, 4715, 4758, 4912, 4938, 4961, 4975, 4976, 4994, 5136, 5174, 5412, 5472, 5476, 5521, 5530	99, 445, 464, 486, 528, 585, 669, 691, 871, 935, 943, 993, 1427, 1508, 1548, 1574, 1628, 1707, 1939, 1953, 2003, 2022, 2095, 2101, 2171, 2261, 2265, 2335, 2373, 2437, 2457, 2459, 2744, 2795, 2859, 2989, 3053, 3125, 3144, 3176, 3191, 3517, 3642, 3707, 3719, 3738, 3875, 4042, 4085, 4129, 4474, 4552, 4802, 4910, 5145, 5542, 5723, 5847, 5954, 5959

Issue 2: Rating stability

	Agree	Disagree	Not sure
Submission number	82, 106, 130, 135, 340, 386, 505, 669, 993, 1159, 1186, 1375, 1426, 1454, 1513, 1707, 1742, 1775, 1791, 1891, 2003, 2012, 2021, 2074, 2101, 2124, 2135,	28, 235, 248, 339, 486, 641, 691, 755, 876, 943, 1070, 1117, 1220, 1366, 1419, 1427, 1503, 1569, 1601, 1628, 1688, 1703, 1790, 1829, 1890, 2107,	76, 259, 361, 413, 528, 599, 1357, 1416, 1567, 1735, 2112,

2154, 2374, 2446, 2480, 2716, 2744, 3111, 3253, 3297, 3342, 3390, 3398, 3423, 3476, 3517, 3526, 3613, 3642, 3645, 3688, 3886, 3892, 4085, 4129, 4139, 4252, 4975, 5136, 5414, 5463, 5472, 5959, 5990	2249, 2271, 2457, 2498, 2512, 2690, 2867, 2990, 3053, 3077, 3163, 3176, 3191, 3275, 3605, 3707, 3808, 4035, 4087, 4474, 4552, 4555, 4715, 4910, 4961, 4976, 5348, 5835, 5953	2283, 2455, 3277, 3397, 4758, 4912, 5847
--	---	---

Issue 3: Paying for tourism promotion			
	Agree	Disagree	Not sure
Submission number	82, 130, 323, 340, 386, 505, 599, 641, 656, 669, 695, 755, 877, 930, 943, 993, 1159, 1357, 1370, 1406, 1419, 1425, 1454, 1508, 1569, 1601, 1628, 1707, 1716, 1735, 1742, 2012, 2021, 2101, 2112, 2135, 2154, 2271, 2306, 2333, 2374, 2431, 2446, 2455, 2457, 2512, 2736, 2744, 2834, 2859, 2989, 3125, 3148, 3163, 3294, 3342, 3526, 3603, 3613, 3642, 3688, 3819, 3875, 3892, 3957, 4085, 4252, 4474, 4552, 4910, 4912, 4975, 5136, 5190, 5549, 5959	99, 106, 413, 445, 486, 616, 805, 935, 1070, 1220, 1276, 1319, 1342, 1363, 1366, 1463, 1567, 1574, 1774, 1791, 1829, 1941, 1953, 2047, 2080, 2107, 2171, 2235, 2257, 2283, 2386, 2439, 2441, 2459, 2534, 2678, 2796, 2864, 3053, 3155, 3159, 3176, 3180, 3191, 3253, 3275, 3398, 3505, 3707, 3738, 3750, 3798, 4073, 5185, 5315, 5476, 5847, 5920, 5952, 5953	135, 306, 464, 547, 1416, 1503, 1570, 2095, 2121, 2129, 2317, 2498, 3239, 3297, 3416, 3476, 3517, 3645, 3678, 4758, 5174, 5414

Issue 4: Paying for housing infrastructure			
	Agree	Disagree	Not sure
Submission number	82, 99, 130, 160, 216, 547, 669, 750, 755, 805, 865, 993, 1073, 1435, 1454, 1560, 1569, 1703, 1742, 1775, 1891, 2012, 2021, 2074, 2101, 2154, 2235, 2631, 2716, 2736, 3163, 3275, 3297, 3390, 3517, 3613, 3645, 3678, 3707, 3794, 3819, 3892, 3914, 3957, 4085, 4129, 4139, 4910, 4938, 5136, 5190, 5348, 5592, 5952	135, 413, 486, 876, 997, 1276, 1366, 1419, 1427, 1463, 1574, 1735, 1791, 1890, 2439, 3176, 3191, 3253, 3342, 3526, 4961, 5185	43, 340, 599, 1159, 1357, 1508, 1567, 1829, 2029, 2121, 2135, 2249, 2265, 2441, 2446, 2529, 3053, 3077, 3125, 3239, 3398, 3427, 3476, 3738, 4073, 5458, 5549

Issue 5: Paying council staff a living wage			
	Agree	Disagree	Not sure
Submission number	106, 130, 158, 177, 216, 235, 259, 323, 340, 656, 695, 876, 935, 943, 993, 1073, 1159, 1186, 1357, 1375, 1425, 1454, 1569, 1703, 1716, 1735, 1742, 1791,	57, 82, 99, 464, 486, 505, 585, 641, 669, 805, 1276, 1427, 1463, 1508, 1567, 1707, 1829, 1941,	616, 2029, 2322, 3144, 3427, 3517, 3957, 4689,

1954, 2003, 2074, 2101, 2135, 2364, 2374, 2455, 2512, 2716, 2736, 2809, 2834, 3111, 3163, 3176, 3239, 3253, 3297, 3476, 3505, 3528, 3581, 3603, 3613, 3645, 3678, 3819, 3886, 3892, 3914, 4090, 4139, 4181, 4554, 4912, 4961, 4986, 5190, 5472, 5476, 5592, 5723, 5953	2107, 2154, 2257, 2265, 4758, 5136, 2271, 2333, 2439, 2441, 5414 2795, 2796, 2867, 2989, 3053, 3275, 3342, 3526, 3605, 3707, 3808, 3875, 4073, 4129, 4474, 4802, 4910, 5185
---	---

Reducing homelessness	
Submission number	216, 464, 669, 755 ,865, 1159, 1406, 1419, 1427, 1664, 1716, 1735, 1891, 2283, 2506, 2736, 2744, 2809, 2834, 3342, 3613, 3661, 3902, 4107, 4552, 5174, 5472

Key transport projects	
Submission number	106, 135, 145, 160, 585, 876, 876, 930, 1186, 1220, 1435, 1716, 1742, 1775, 1865, 1891, 2135, 2235, 2249, 2249, 2631, 2631, 3125, 3180, 3427, 3566, 4058, 4090, 4544, 4758, 4961, 5393, 5713

Regional governance and support	
Submission number	82, 92, 259, 445, 505, 669, 943, 993, 1569, 1735, 2095, 2412, 2763, 3176, 4073, 4139, 4474, 4912, 5315

Submissions from outside the Albert-Eden Local Board Area but on Albert-Eden Local Board priorities and advocacy items

Submissions from outside Albert-Eden Local Board but on Albert-Eden Local Board priorities and advocacy items			
Topic area		Number of submissions	Submission number (for those which included comments)
Priorities	Yes	25	717, 1677, 2491
	No	28	1146, 1951, 2098, 3146, 3441, 3611, 3644, 3653, 4229, 4471
	Partial	34	55, 511, 662, 747, 3010, 3090, 5179, 5208
	Other	4	819, 3831, 4796
Light rail	Yes	53	511, 717, 819, 1677, 2234, 2491, 2886, 2983, 3146, 3244, 3295, 3441, 4039, 5413
	No	8	662, 970, 2098, 2872
	Not sure	4	456, 3060
Uptown BID expansion	Yes	33	717, 2098, 2491
	No	6	453
	Not sure	25	466, 511, 819, 3090, 3441

	Other	1	373
Chamberlain Park Master Plan	Yes	22	384, 1677, 2897, 4039
	No	55	107, 365, 373, 511, 662, 717, 819, 992, 1719, 1951, 2098, 2234, 2487, 2983, 3032, 3058, 3060, 3146, 3244, 3295, 3611, 3644, 4548, 4768, 4769, 4773, 4780, 4782, 4796, 4937, 5012, 5015, 5413, 6007
	Not sure	10	2491, 3441
	Other	2	3828, 3841