

Date: Thursday, 11 March 2021
Time: 10.01am
Meeting Room: Reception Lounge
Venue: Auckland Town Hall
301-305 Queen Street
Auckland

**Kōmiti Whakarite Pārae, Mahi Toi, Hapori,
Kaupapa /
Parks, Arts, Community and Events Committee
OPEN MINUTE ITEM ATTACHMENTS**

ITEM TABLE OF CONTENTS

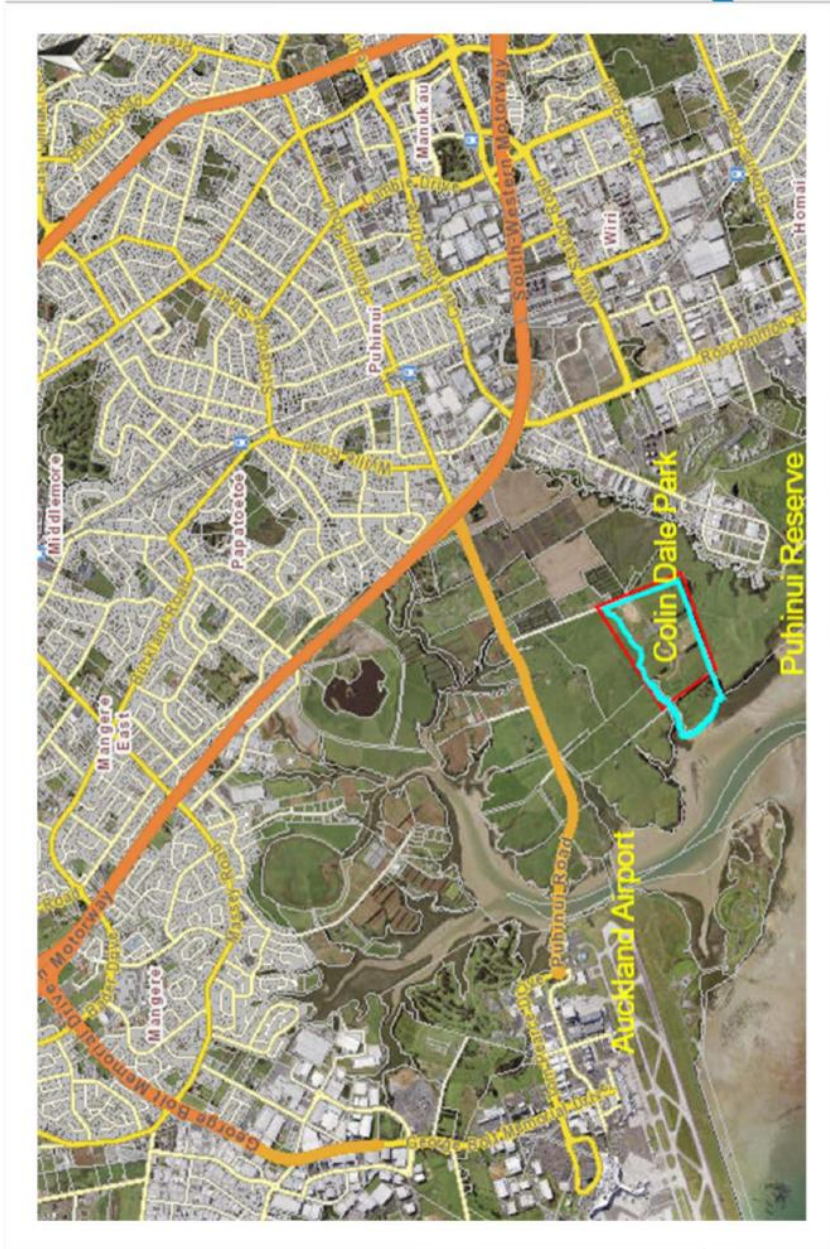
PAGE

10	Agreement to lease with The Colin Dale Kartsport Development Charitable Trust at Colin Dale Park, 87R Prices Road, Manukau	
A.	11 March 2021, Parks Arts Community and Events Committee: Item 10 Agreement to lease with The Colin Dale Kartsport Development Charitable Trust at Colin Dale Park, 87R Prices Road, Manukau	3

Parks, Arts, Community and Arts Committee
Colin Dale Park, Manukau
Jenny Young, Community Lease Specialist

11 March 2021





Chronology

- **2003** land purchased as site for a wheeled and motor sports park
- **2006-2013** concept plans developed for wheeled and motor sports use
- **March 2013** resource consent granted for motorsport activity
- **May 2014** public notification of intention to grant leases on the park (four community and two commercial leases)
- **November 2015** agreements to lease granted to the four community groups and two commercial operators:



2015



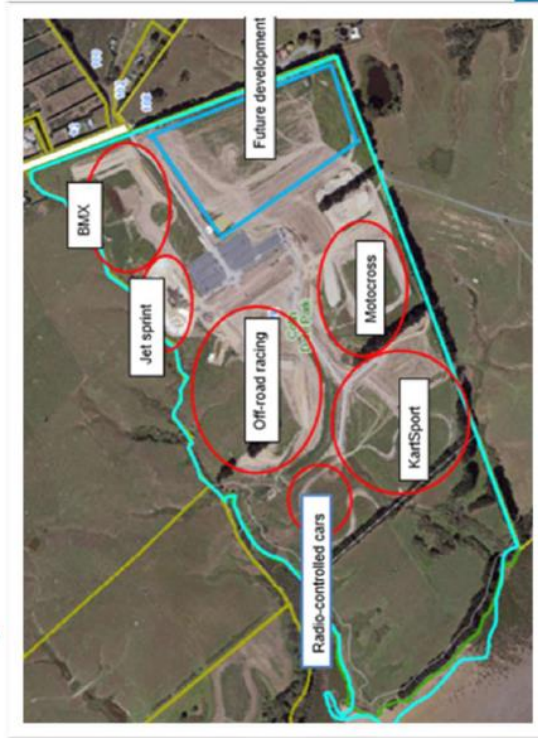
Chronology

- **2016** three of the four community sport groups signed the agreements to lease, KartSport Manukau Incorporated were the only group not to sign
- **March 2017** KartSport Manukau Inc. dissolved and removed from the Companies Office register
- **November 2017** The Colin Dale Park KartSport Development Trust formed
- **2017 - 2019** community agreement holders (including kartsport) consider reconfiguration of sites to support future development options



Proposed

2015



Chronology

- **March 2020** application for lease received from The Colin Dale Park KartSport Development Trust. Ōtara-Papatoetoe Local Board reiterate their wish to have the park designated as a regional asset.
- **December 2020** Ōtara-Papatoetoe Local Board resolved to request a review of the governance of the wheeled and motor sport portion of Colin Dale Park, with the view to it becoming a regional asset

Questions

