

Date: 23 Feb 2023
Time: 1.30pm or at the conclusion of the Governing Body
whichever is later
Meeting Room: Reception Lounge
Venue: Auckland Town Hall
301-305 Queen Street
Auckland

**Komiti mō te Ārai Mate Whawhati Tata me Te Raru
Ohorere / Civil Defence and Emergency
Management Committee**

OPEN MINUTE ITEM ATTACHMENTS

ITEM	TABLE OF CONTENTS	PAGE
7	Recovery Manager appointment process and interim process - January Floods and Cyclone Gabrielle	
	A. 23 March 2023, Civil Defence and Emergency Management Committee: Item 7, Recovery Manager appointment process and interim process - January Floods and Cyclone Gabrielle, Presentation	3

Auckland Flooding & Cyclone Events

CDEM Group Committee
Auckland Anniversary Weather Event
Cyclone Gabrielle

February 2023

Auckland Emergency Management
Tōrangia Māta Orahiko o Tāmaki Makaurau

1

Auckland Severe Weather Events

State of Emergency: National Declared

Numbers at a Glance
1400 hrs Wed 22 Feb 2023

Following the unprecedented rain experienced across the Auckland region on the 27th of January, Cyclone Gabrielle brought more record-breaking weather across the Upper North Island on February 13th and 14th.

Flooding, landslips and utility failures have caused the evacuations of multiple neighbourhoods and hundreds of individual homes across the region.

While the weather has eased, access and contact remains difficult to parts of the region.

Key Messages

REGIONAL PARKS CLOSED
Five regional parks are closed for safety reasons: Waitāhuru Regional Park, Muriwai Regional Park, Ahi Creek Regional Park, Ōhauwāhau Regional Park, and the western side of the Hunua Ranges, including Hunua Falls.

AUCKLAND BEACHES
There is currently a risk of contaminated water, debris and unsafe conditions at some of our Auckland beaches. Beaches may not be patrolled by surf lifesavers due to the current conditions. Access to beaches may be restricted or closed (Regional Parks). Check safe swim for further information.

CIVIL DEFENCE CENTERS OPEN
Check the Auckland Emergency Management website for the latest list of CDCs, shelters and community support hubs.

HELPS AVAILABLE
Ministry of Business, Employment and Innovation (MBIE) has activated its Temporary Accommodation Service. People can register with Temporary Accommodation Service (TAS) on 0800 754 163. For the national support contact Work and Income on 0900 400 100.

ROAD CLOSURES
There are a number of road closures in place and some impacts on public transport. Please take care when driving in more remote areas around the region. Please visit the AT website for the latest information.

Check the Auckland Emergency Management website www.aem.org.nz for more information on disposal of flood damaged household items, sandbags, building assessments, insurance and support.

Resources

- <https://www.police.govt.nz/use-105>
- www.aem.org.nz
- AEM support line 0800 22 22 00
- <https://www.flood.govt.nz/prepare>
- <https://nzta.govt.nz/roadrepairs>
- <https://www.aucklandcouncil.govt.nz/>

568* Calls yesterday to Auckland Council regarding event
* Call centre open 24hrs
▼ 557 from 20/02/2023

60 needs assessment requests received last 24hrs
▲ 11 from previous day

66 people accommodated last night in centres
▲ 5 from previous day

900* properties without power
* excludes customers at the west coast beaches
▼ 1100 from previous day

37 roads closed
▼ 3 from previous day

2561 tonnes flood debris disposed last 24hrs
▲ 41 from previous day

January 27th Flood Rapid Building Assessments

357 red placards issued

1943 yellow placards issued

3179 white placards issued

Cyclone Gabrielle Rapid Building Assessments

216 red placards issued

276 yellow placards issued

900 white placards issued

Numbers are as accurate as possible at 1400 hrs and are subject to change.

2

Auckland Anniversary Weekend Flood Response

- Rapid Building Assessment
- From Saturday 28 January, rapid building assessments commenced of properties affected by flooding and land instability



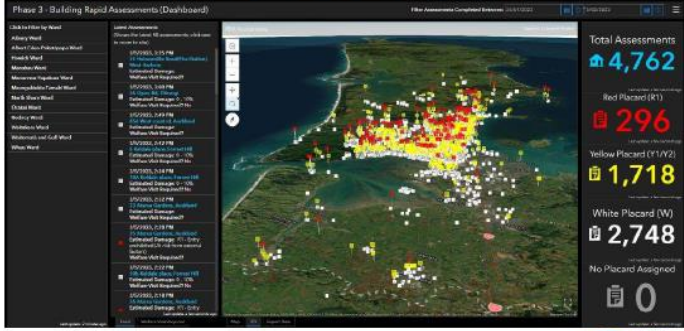







3

Rapid Building Assessment Dashboard

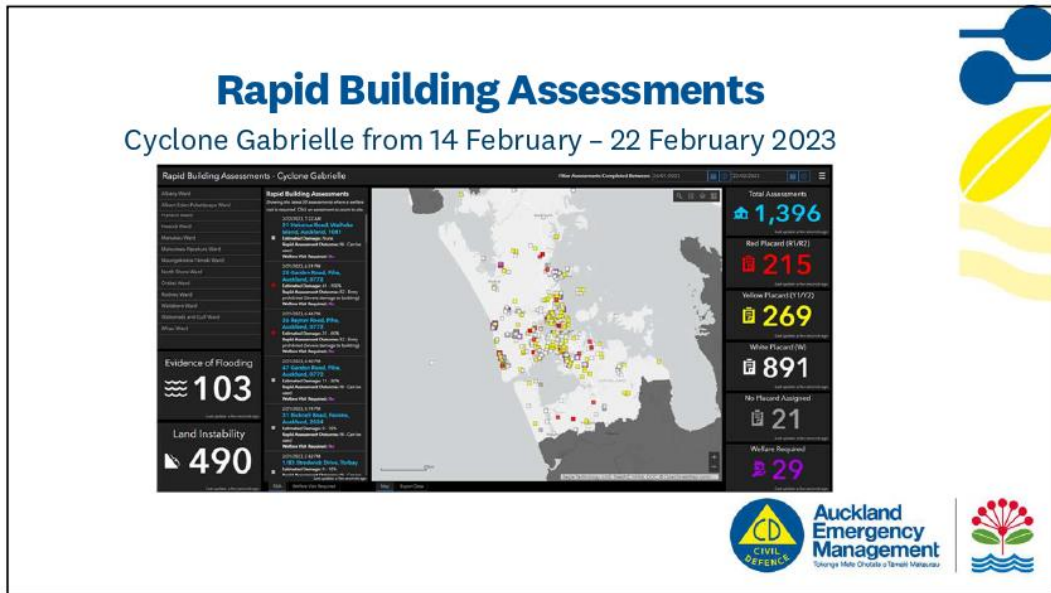
28 January - 5 February 2023.



Assessment Status	Count
Total Assessments	4,762
Red Placard (R1)	296
Yellow Placard (Y1/Y2)	1,718
White Placard (W)	2,748
No Placard Assigned	0

4






5

Observations and Analysis

The proportion of yellow-stickered properties to total properties assessed was much larger during Anniversary weekend's severe rain and flooding (36%) than for Cyclone Gabrielle (19%).

The proportion of red-stickered properties during the flooding event was lower (6%) than for Cyclone Gabrielle (15%), -

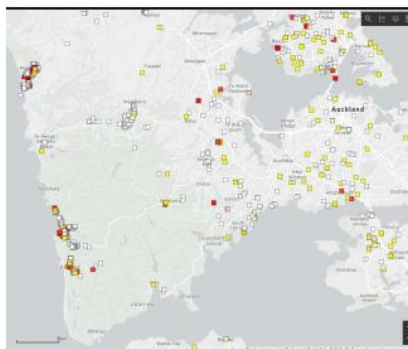




6

West and Central Auckland

Rapid Building Assessments in isolated west coast beach communities:

- Muriwai
- Te Henga
- Piha
- Karekare

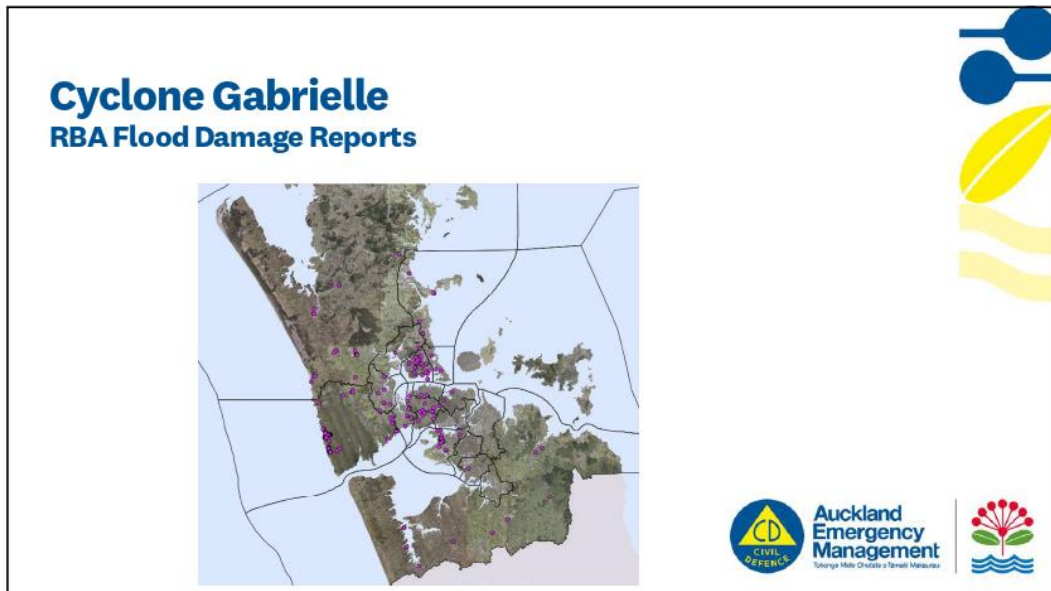
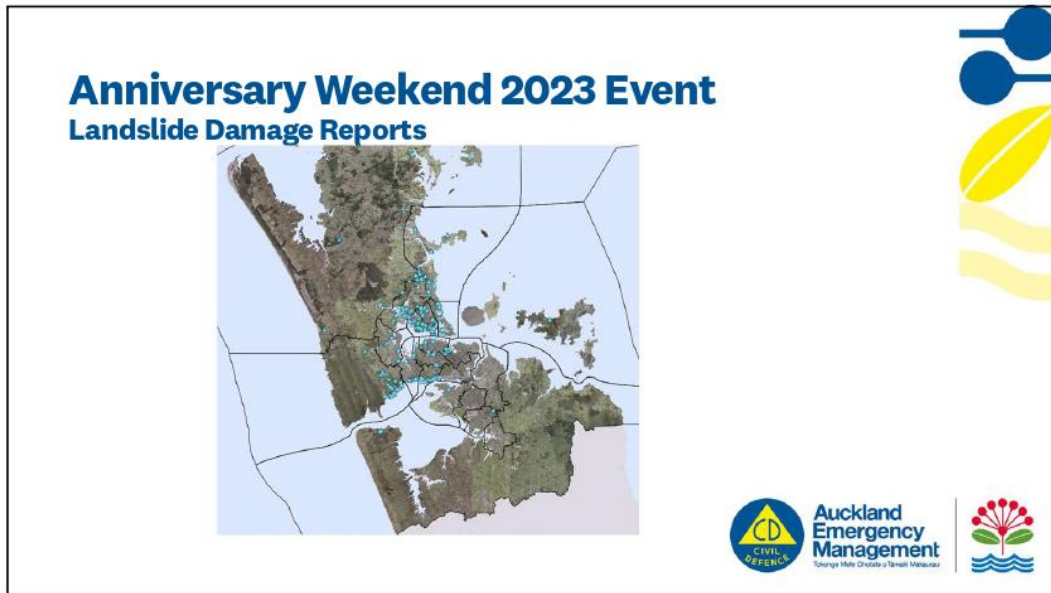


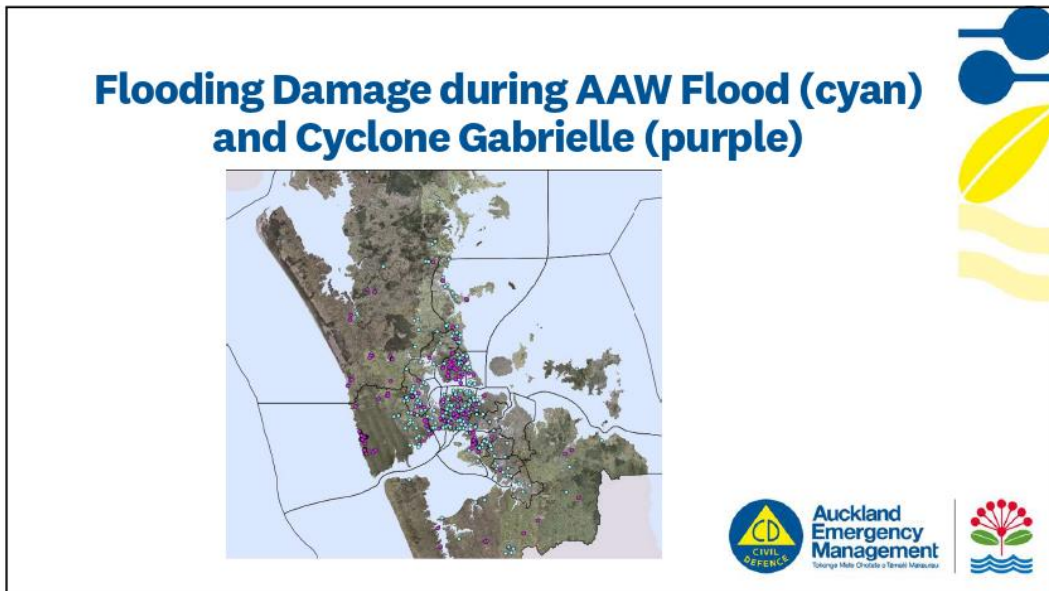
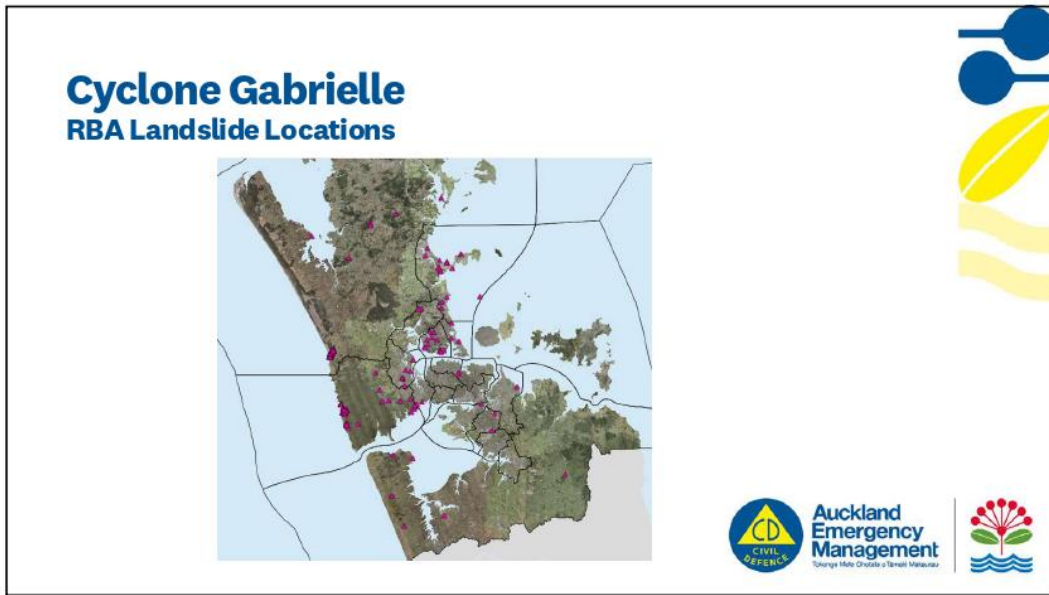
7

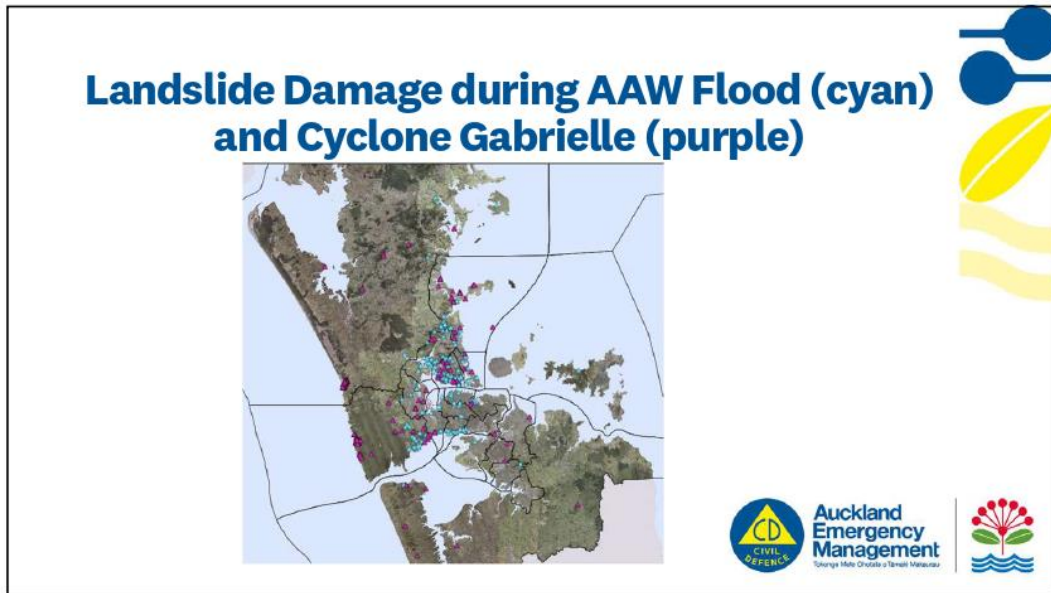
Anniversary Weekend 2023 Event Flood Damage Reports



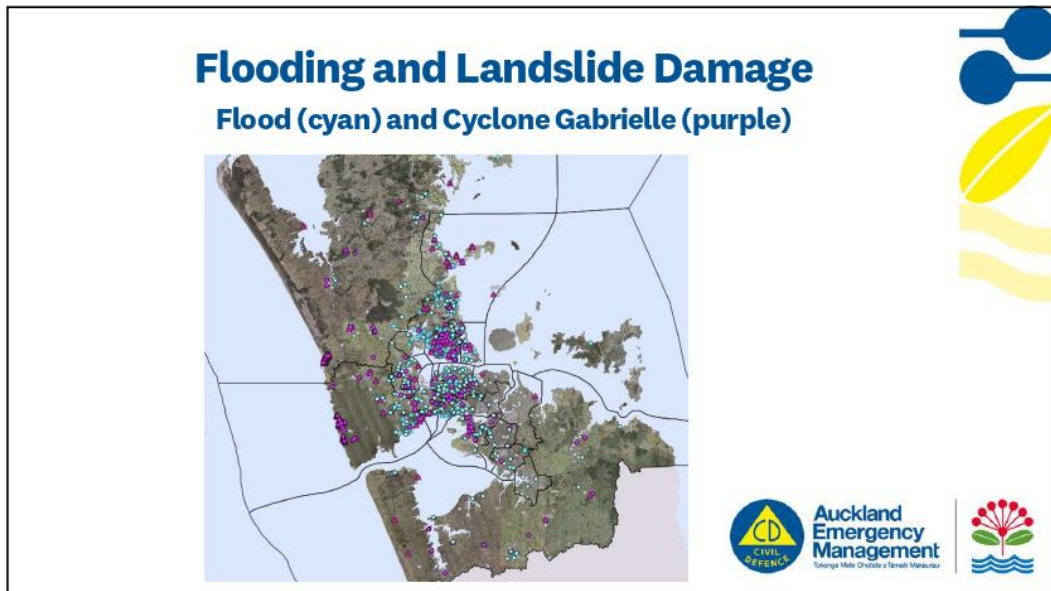
8







13



14