

I hereby give notice that an ordinary meeting of the Governing Body will be held on:

Date: Thursday, 27 April 2023
Time: 10.00am
Meeting Room: Reception Lounge
Venue: Auckland Town Hall
301-305 Queen Street
Auckland

Tira Hautū / Governing Body OPEN ADDENDUM AGENDA

MEMBERSHIP

Mayor
Deputy Mayor
Councillors

Wayne Brown	
Cr Desley Simpson, JP	
Cr Andrew Baker	Cr Mike Lee
Cr Josephine Bartley	Cr Kerrin Leoni
Cr Angela Dalton	Cr Daniel Newman, JP
Cr Chris Darby	Cr Greg Sayers
Cr Julie Fairey	Cr Sharon Stewart, QSM
Cr Alf Filipaina, MNZM	Cr Ken Turner
Cr Christine Fletcher, QSO	Cr Wayne Walker
Cr Lotu Fuli	Cr John Watson
Cr Shane Henderson	Cr Maurice Williamson
Cr Richard Hills	

(Quorum 11 members)

Sandra O'Toole
Kaiarataki Kapa Tohutohu Mana Whakahaere /
Team Leader Governance Advisors

26 April 2023

Contact Telephone: (09) 890 8152
Email: sandra.otoole@aucklandcouncil.govt.nz
Website: www.aucklandcouncil.govt.nz

ITEM	TABLE OF CONTENTS	PAGE
8	Recovery Coordination Office Update	5
11	Budget Update Report April 2023	15
PUBLIC EXCLUDED		
	Procedural motion to exclude the public	17
C3	CONFIDENTIAL: Auckland Council Chief Executive recruitment	17

Recovery Coordination Office Update

File No.: CP2023/04542

Te take mō te pūrongo Purpose of the report

1. To update the Governing Body on the recovery programme from the January Floods and Cyclone Gabrielle.

Whakarāpopototanga matua Executive summary

2. Earlier this year Auckland experienced two significant emergency events, initially declared as a local State of Emergency and subsequently within the area for which a National State of Emergency was declared. A National Period of Transition Notice is currently in place for the Auckland region.
3. This report is the first update on progress rather than specific matters. A more comprehensive overview of the forward programme and associated reporting measures will be provided to the Governing Body at the 23 May meeting. .
4. Interim objectives have been developed to guide and coordinate recovery activities in the short term, which will be refined and confirmed through the development of the Tāmaki Makaurau Recovery Plan these are:
 - Impacted communities are reconnected and resilient, enabling regeneration
 - Mana whenua and Māori are active partners and participants in the recovery programme for Tāmaki Makaurau
 - Repaired and reinstated housing, infrastructure, facilities, and services are more resilient, and our natural environment is regenerated
 - Sustainable economic activity is re-established enabling equity and economic prosperity.
5. Recovery is a collaborative endeavour. Recovery efforts are being integrated through four whenu, or workstreams, which correspond to the objectives:
 - i) Community and Social Wellbeing
 - ii) Māori Partnership and Participation
 - iii) Natural and Built Environment
 - iv) Economy.
6. The Recovery Coordination Office (Office) has been established to lead coordination within and across the workstreams. Under the leadership of the Group Recovery Manager and Deputy Group Recovery Manager the Office is lean, relying on the activities of participating agencies and resources of the Auckland Council group.
7. Progress highlighted in this report includes progress and information on:
 - Healthy Waters' risk-based programme, 'Making Space for Water'
 - Auckland Transport and Watercare projects updates
 - geotechnical investigations
 - Regulatory management of the issued Rapid Building Assessments
 - recovery planning and the recovery coordination office

Ngā tūtohunga Recommendation

That the Governing Body:

- a) whiwhi / receive the update on the recovery programme from the January Floods and Cyclone Gabrielle.
- b) tuhi ā-taipitopito / note that the May 2023 Recovery Office update will provide interim recovery objectives and a performance dashboard for the four workstreams, until the final Recovery Plan has been approved.

Horopaki Context

8. The Auckland region experienced two emergency events in quick succession with the record-breaking rainfall event on 27 January 2023 and Cyclone Gabrielle in the second week of February 2023. Almost the entire region of Auckland was impacted through widespread flooding, landslips, high winds, trees down, extensive power outages, localised flooding and further slips. People were evacuated from flooded homes, west coast communities isolated, infrastructure damaged and loss of life.
9. A local State of Emergency was declared on 27 January 2023 and extended, first to 10 February, and then to 17 February 2023. Cyclone Gabrielle had significant impacts across six regions of New Zealand including Auckland, resulting in a National Emergency being declared for the third time in New Zealand history.
10. The scale of these emergencies and their impacts require coordinated recovery efforts to address their consequences in the immediate, medium and long-term.
11. The Auckland Council Civil Defence Emergency Management Committee (CDEM Committee) held two extraordinary meetings to consider recovery matters on 9 February and 23 February 2023. The Governing Body received an update report on 23 March 2023.
12. A National Notice of Transition Period signaling the transition of the response to recovery was issued on 3 March 2023 and included the Auckland region. Valid for 90 days, the National Notice may be extended, or a local Notice of Transition Period may be issued by the Group Recovery Manager or Deputy Group Recovery Manager for Tāmaki Makaurau. Notices of Transition make certain powers available to manage, coordinate or direct recovery activities in the public interest, where necessary or desirable to ensure a timely and effective recovery. The powers are like those available to a Controller under a Declaration of Emergency in a response.
13. The mayor has written to the Chief Executive outlining a number of initiatives to develop more resilient infrastructure, land use planning and building regulations. These initiatives include build back [infrastructure] better; address land use planning and building regulations; and initiate a number of stormwater actions to improve effectiveness of stormwater assets and overland flow paths. The matters raised will be addressed across the recovery initiatives and have been referred also to the Chief Planning Office and Regulatory Services. As noted in the attached letter the Cyclone Recovery Taskforce has also received a copy of the letter. (Attachment 1)

Tātaritanga me ngā tohutohu Analysis and advice

Progress Update

14. The report also provides information on the coordination of recovery efforts through the Recovery Coordination Office. More importantly, the report highlights a sample of progress across recovery activities.

Recovery in Tāmaki Makaurau

15. The recovery to the combined events is of a scale not previously implemented in Auckland. Affecting most of the Auckland region, the recovery needs to address impacts and consequences across the region from the north to the south, including rural, urban, residential and business areas.
16. Establishing and maintaining the recovery will be a significant commitment, necessitate the reprioritisation of expenditure and generate a significant workload for some parts of Auckland Council group operations in addition to business as usual. It will require the coordination of resources across the council group and oversight from the Governing Body.
17. To support and guide the coordination of recovery effort in the initial stages, interim objectives have been developed. The objectives of the recovery will be refined and confirmed through the development of the Tāmaki Makaurau Recovery Plan:
 - i) Impacted communities are reconnected and resilient enabling regeneration.
 - ii) Mana whenua and Māori are active partners and participants in the recovery of Tāmaki Makaurau.
 - iii) Repaired and reinstated housing, infrastructure, facilities, and services are more resilient, and our natural environment is regenerated.
 - iv) Sustainable economic activity is re-established, enabling equity and economic prosperity.
18. Collective recovery efforts are dedicated to these objectives through the inclusion of participating organisations in the relevant whenu, or workstreams. The four whenu have been tailored to meet the needs of Tāmaki Makaurau and are like the concept of recovery environments.



Figure 1. Tāmaki Makaurau recovery whenu

Community and Social Wellbeing

19. This whenu includes temporary accommodation, aspects of housing, displacement of whānau from their homes and other concerns and circumstances that impact wellbeing. Key partners include Auckland Council, the Temporary Accommodation Service and Ministry of Social Development.

20. The future programme will include place-based community initiatives and facilitating community engagement in recovery planning and delivery.

Māori Partnership and Participation

21. This whenu recognises the need for effective engagement with Māori and for Māori to be engaged as Treaty of Waitangi partners. Iwi and Māori have interests across each of the other whenu such as marae, businesses, housing, tamariki and the natural environment. Establishing connections and relationships with iwi and marae is a priority.

Natural and Built Environment

22. This whenu includes impacts on water supply, wastewater, stormwater and transport infrastructure, geotechnical and ground stability, placarded buildings, building and planning regulations. The work programme for this whenu will both inform and support the development of policy positions that may be required as a part of decision making on solutions to both the impacts of the events of early this year, and for subsequent events.
23. Key partners include Auckland Council, Auckland Transport, Watercare Services, Healthy Waters, Toka Tu Ake/EQC, Insurance Council of New Zealand, insurance companies, Ministry of Business Innovation and Employment and the New Zealand Infrastructure Commission / Te Waihanga.
24. The Auckland Recovery Office's is coordinating a workshop with asset owners, the Infrastructure Commission / Te Waihanga and the Construction Sector Accord to establish a comprehensive understanding of the infrastructure programme for existing programmes and recovery construction spend over the next three years. The intent is to integrate the programme of works to ensure the efficient procurement and project delivery.

'Making Space for Water' - Healthy Waters

25. Healthy Waters is rapidly advancing development of a flood recovery programme, known as 'Making Space for Water', specifically:
- the volumes of water and its velocity and higher than previously recorded
 - areas that flooded in late January were predominantly in known flood plains
 - flood prone areas or overland flow paths and confirmed with modelling
26. Managing risk is central to stormwater management. The Making Space for Water programme is risk-based and includes a range of interventions:
- locality based blue-green network projects, including daylighting and floodplain management opportunities
 - targeted interventions for high-risk properties
 - enhanced response for rural settlements
 - stream rehabilitation, including community led programmes for private streams
 - management of overland flow paths
 - increased network maintenance
 - upgraded infrastructure, such as culverts and stormwater detention in parks
 - building community resilience
 - continued development of flood intelligence capabilities, in order to improve storm and emergency response

27. The reactive part of the work programme has been identified through requests for service, drone surveys and site assessment. Work is underway on over 100 reactive projects involving work on natural assets (for example streams) and built assets (for example catchpits and culverts). Further work is being identified and these projects will continue as needed as detailed work programmes are finalised.
28. Making Space for Water is a significant programme of work. The Recovery Office plans to workshop its scope, benefits and implications with the Governing Body, and the proposed programme will be presented to the Governing Body for consideration.

Auckland Transport

29. Auckland Transport (AT) is responding to community needs. To keep communities informed:
 - the AT website is updated with the latest information on open roads and road closures on an ongoing basis
 - coordinated communications to across the region, including to elected members, local community groups and partners are being coordinated on an ongoing basis
30. To respond to communities needs for roading repairs around 40 key projects are being tracked and managed across eight areas. Due to over slips, under slips and geotech issues, many projects require restrictions on access or road controls. Some projects are more complex involving multiple slips and or multiple utilities. Projects progress through Scoping, Investigation, Planning, Design and Construction, as shown in Table 1.

Table 1. Auckland Transport recovery projects

Area of Auckland Region	# Projects / Status
West	12 under investigation 2 in scoping phase
North rural	22 under investigation 4 scoping 2 design
North urban	1 scoping 2 design
South rural	16 investigation 2 scoping
South urban	1 completed 3 investigation
Central	1 investigation 1 scoping
Great Barrier	5 investigation
Waiheke	5 investigation 1 scoping
Scour protection works	multiple sites detailed repair options in preparation packages of work to be project managed when ready

Geotechnical investigations

31. Work is continuing to assess geotechnical hazards. Council staff are working with a panel of geotechnical suppliers established to:
- review the process for removal or downgrading of placards where the risk has reduced or remedial measures have been undertaken
 - to quantify the risk in the hardest hit west coast communities to aid future decision making.

Rapid Building Assessment

32. Continued responsive administration of the placards attached to damaged buildings has processed many requests for reassessment following completion of remedial work. The current number of placards is set out in Table 2 (as at 17 April 2023) with the arrow indicating the change since recorded status (as at 22 March 2023).

Table 2. Number of placards – April 2023

Placards	March 22	April 18
Red	681	334 (↓347)
Yellow	2357	1905 (↓425)
White	4326	4100 (↓226)

Economic Growth

33. This whenu includes impacts on business, in both urban and rural settings. Central government has provided grant funding by the Ministry of Business Innovation and Employment and Ministry of Primary Industries with the intent of ensuring businesses can be fully operational quickly, production shortfalls are addressed and businesses can be more resilient.
34. Key partners include Auckland Council, the Ministry of Business Innovation and Employment, Auckland Chamber of Commerce, Employers and Manufacturers, Ministry of Primary Industries, Rural Support Trust, Northern Adverse Events Team and the Waikato Primary Industries Adverse Event Cluster.

Recovery Planning

35. An Interim Recovery Plan has been prepared to guide the operations of the Office in the initial period. Content on the interim recovery objectives, recovery whenu and structure of the Office have been drawn from that Plan.
36. The focus is now on the Tāmaki Makaurau Recovery Plan (TMRP) with the development of a detailed work programme, encompassing the process for its development, community engagement, deliverables, timeframes and alignment with processes for the Annual Budget and Long-term Plan. The TMRP is envisaged as being two tiered; with a region wide-section and sections that are more place-based, aligned to individual or clusters of local board areas. Indicative content is set out in Table 3.

Table 3. Tāmaki Makaurau Recovery Plan indicative content

Region-wide section	Local section
<ul style="list-style-type: none"> • Vision and objectives • Policy context • Introducing the recovery whenu • Recovery Coordination Office 	<ul style="list-style-type: none"> • Place-based context (impacts, consequences, Local Board Plans etc) • Place-based plans / place-based recovery activities

Region-wide section	Local section
<ul style="list-style-type: none"> • Governance • Funding • General information – Rapid Building Assessment processes, links etc • Indicators and metrics • Exit 	<ul style="list-style-type: none"> • Indicators and metrics

37. Inevitably there will be recovery activities that overlap to some degree with the policy work (scope of work) agreed to by the Planning, Environment and Parks Committee (PEPCC/2023/25) and policy development by central government. The TRMP is also related to the work of the Cyclone Recovery Taskforce, whose role is to bridge local recovery and advise central government. The Taskforce is to provide advice on what is required for recovery and how to improve resilience to climate change and severe weather in future, as well as priorities and sequencing in each region.
38. The TMRP will include reference to parallel policy processes as relevant. It noted that there remains an inherent tension between the time required of policy development and timely recovery efforts. The Severe Weather Emergency Recovery Legislation Bill being progressed may assist in navigating these issues.

Recovery Coordination Office

39. The Recovery Coordination Office (Office) has been established, based on portfolio management principles and disciplines to provide integration across recovery, business as usual and change. The Office is lean and supported by a matrix structure, leveraging the business of participating organisations to deliver recovery efforts.
40. The Office reports into the Deputy Recovery Manager and is made up of staff from across the recovery whānau. The structure of the Office, with four functions, each with subfunctions, is set out below:

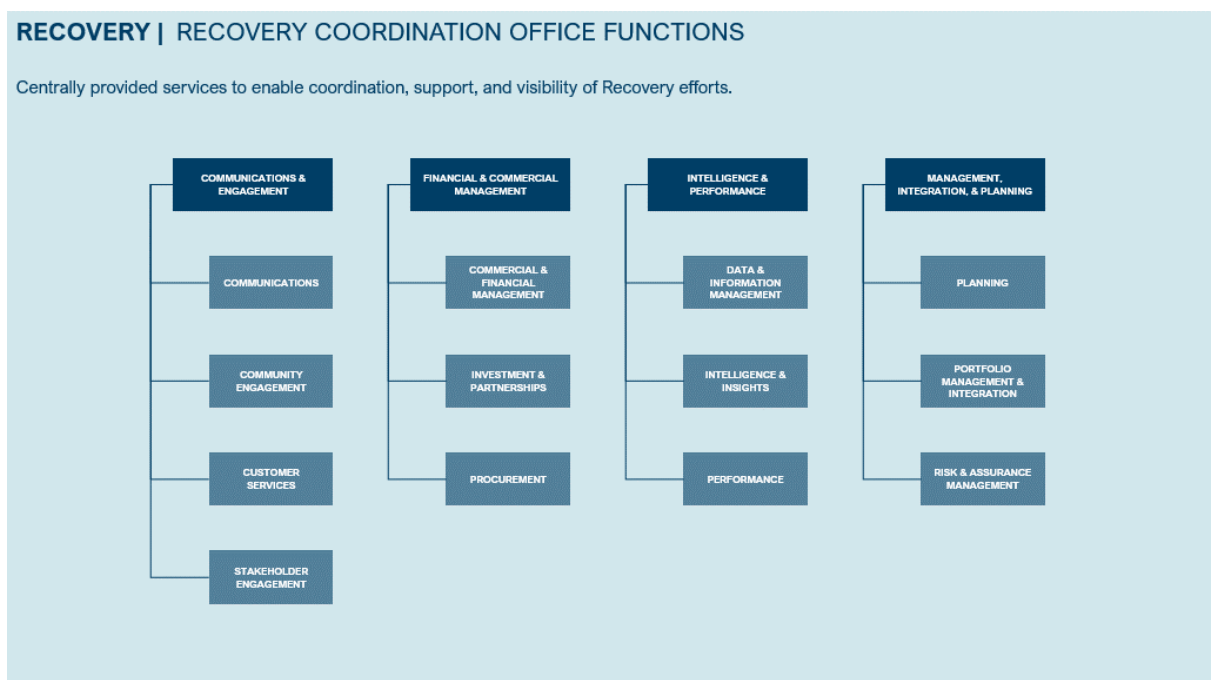


Figure 2. Recovery Coordination Office functions.

Tauākī whakaaweawe āhuarangi Climate impact statement

41. The update on the recovery from the January Floods and Cyclone Gabrielle does not impact on greenhouse gas emissions or approaches to reduce emissions, though may identify opportunities to provide additional benefit in the context of climate change.
42. A core goal of Te Tāruke-ā-Tāwhiri: Auckland's Climate Plan is to adapt to the impacts of climate change by ensuring we plan for the changes we face under our current emissions pathway. The Recovery Coordination Office's activities will contribute to delivery of actions within Te Tāruke-ā-Tāwhiri, in particular, Action C1. "Work together to strengthen the resilience of our communities, people and places" which includes the sub-actions:
 - Establish a prioritised programme of support for communities and individuals who are most impacted.
 - Engage and educate communities and industries to be aware of current and future climate risks and consequences of hazards.
 - Identify how mana whenua, communities and their places can be more resilient.
43. The Recovery Coordination Office's work with the team from the Chief Planning Office on the "Report back on the scope of work: flooding impacts, implications and improvements" (PEPCC/2023/25) referred to above is noted in this regard

Ngā whakaaweawe me ngā tirohanga a te rōpū Kaunihera Council group impacts and views

44. In recognition of the council group's constrained financial position, the recovery is based on portfolio management approaches and delivered under a distributed model. Coordination will be undertaken by a lean Recovery Coordination Office, with dedicated workforce provided, and recovery efforts undertaken, by business units across the Auckland Council group.
45. Auckland Transport and Watercare Services Limited have participated in discussions informing the design of the Recovery Coordination Office, the whenu, workstreams and participation in the Office. Working together will increase as the Office is established and commences coordinated delivery of the work programme. Extension of these arrangements to other members of the Council Group will arise out the work programme.

Ngā whakaaweawe ā-rohe me ngā tirohanga a te poari ā-rohe Local impacts and local board views

46. The impacts of the January Floods and Cyclone Gabrielle were experienced across the Auckland region and are of significant interest to local communities and their local boards. The recovery will involve significant local board involvement and engagement.

Tauākī whakaaweawe Māori Māori impact statement

47. Mana whenua and mataawaka living in Auckland were impacted by the January Floods and Cyclone Gabrielle as individuals and whānau and through impacts on marae and sites of cultural significance. Many marae acted as community hubs providing support to those impacted by the weather event.
48. The recovery is an opportunity to partner with iwi, mataawaka, marae and Māori businesses. Areas for consideration could include the use of marae and Māori-led organisations in delivering recovery activities to their communities, responding to impacts on the natural environment, including native species and ecosystems, and changes to land use and stormwater systems to enhance the mauri of waterways in Tāmaki Makaurau.

Ngā ritenga ā-pūtea Financial implications

49. There are no financial implications arising directly from this report as it provides an update to the Governing Body for their information. Future funding implications are being worked through along with potential funding sources, including from central government. Year one funding is anticipated to be covered by reprioritised existing budgets

Ngā raru tūpono me ngā whakamaurutanga Risks and mitigations

50. The office is designed on programme management principles and disciplines including risk management. The Office's Management, Integration and Planning function specifically includes the Risk and Assurance Management subfunction. Work programming is subject to risk assessments and risk management controls and systems and appropriate assurance and monitoring of the overall portfolio will be undertaken.

Ngā koringa ā-muri Next steps

51. The Governing Body will receive the next update at its 23 May 2023 meeting.

Ngā tāpirihanga Attachments

There are no attachments for this report.

Ngā kaihaina Signatories

Authors	Wayne Brown - Principal Recovery Advisor Mace Ward - General Manager Parks, Sports and Recreation
Authorisers	Phil Wilson – Group Recovery Manager (Acting) Jim Stabback - Tumu Whakarae / Chief Executive

Budget Update Report April 2023

File No.: CP2023/04778

THIS ITEM HAS BEEN WITHDRAWN

Item 11

Exclusion of the Public: Local Government Official Information and Meetings Act 1987

That the **Governing Body**

a) exclude the public from the following part(s) of the proceedings of this meeting.

The general subject of each matter to be considered while the public is excluded, the reason for passing this resolution in relation to each matter, and the specific grounds under section 48(1) of the Local Government Official Information and Meetings Act 1987 for the passing of this resolution follows.

This resolution is made in reliance on section 48(1)(a) of the Local Government Official Information and Meetings Act 1987 and the particular interest or interests protected by section 6 or section 7 of that Act which would be prejudiced by the holding of the whole or relevant part of the proceedings of the meeting in public, as follows:

C3 **CONFIDENTIAL: Auckland Council Chief Executive recruitment**

Reason for passing this resolution in relation to each matter	Particular interest(s) protected (where applicable)	Ground(s) under section 48(1) for the passing of this resolution
The public conduct of the part of the meeting would be likely to result in the disclosure of information for which good reason for withholding exists under section 7.	<p>s7(2)(a) - The withholding of the information is necessary to protect the privacy of natural persons, including that of a deceased person.</p> <p>s7(2)(i) - The withholding of the information is necessary to enable the local authority to carry on, without prejudice or disadvantage, negotiations (including commercial and industrial negotiations).</p> <p>In particular, this report contains information that relates to the setting of a recruitment process for the chief executive, and the committee may discuss matters relating to the person specification or potential candidates.</p>	<p>s48(1)(a)</p> <p>The public conduct of the part of the meeting would be likely to result in the disclosure of information for which good reason for withholding exists under section 7.</p>