

**Date:** 05 Mar 2024  
**Time:** 10.00am  
**Meeting Room:** Room 1, Level 26  
**Venue:** 135 Albert Street  
Auckland

---

## Regulatory and Community Safety Committee

### OPEN MINUTE ITEM ATTACHMENTS

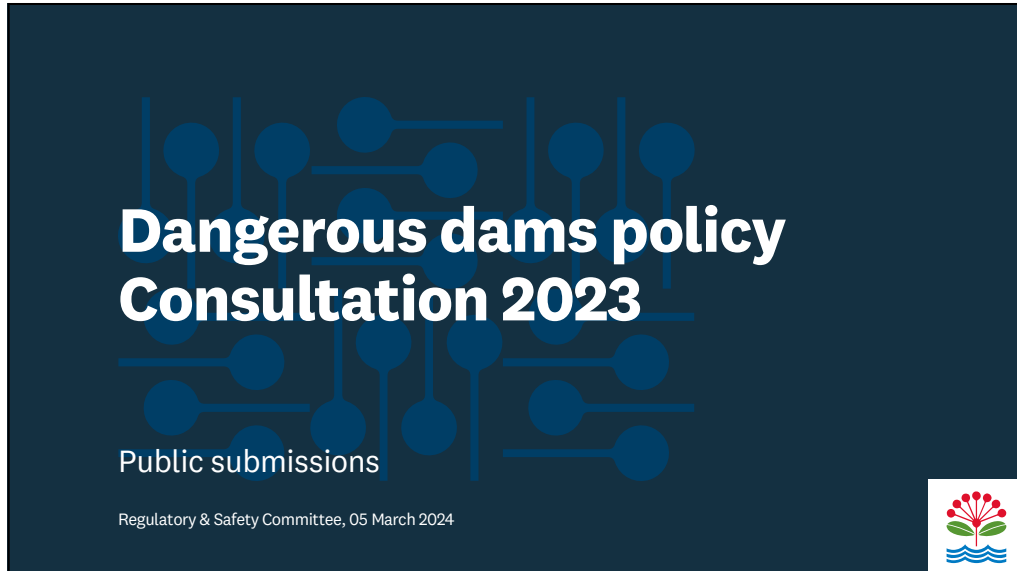
---

ITEM	TABLE OF CONTENTS	PAGE
<b>8</b>	<b>Decision on submissions and consultation report on proposed dangerous dams policy</b>	
A.	5 March 2024, Regulatory and Community Safety Committee, Item 8: Decision on submissions and consultation report on proposed dangerous dams policy - presentation	3
B.	5 March 2024, Regulatory and Community Safety Committee, Item 8: Decision on submissions and consultation report on proposed dangerous dams policy - Local Board feedback	9
C.	5 March 2024, Regulatory and Community Safety Committee, Item 8: Decision on submissions and consultation report on proposed dangerous dams policy - Rural Submission	17



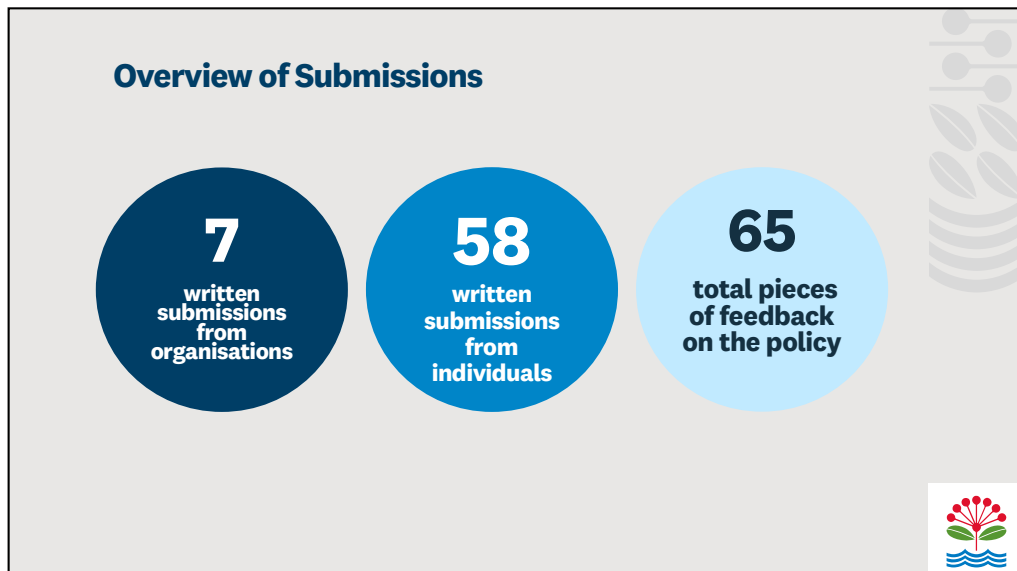
04/03/2024

Item 8



1

Attachment A




2

1

### Q1- Overall opinion of our dangerous dams policy


Feedback options	Individual response	Organisation response
Support	47	4
Do not support	6	0
Other	0	0
I don't know	5	0



3

### Overall support comments on the policy

- Support for a strong focus on balancing the benefits with dam safety and cost to comply.
- A proactive dam safety management regime means reduced environmental impact caused by dam related damage on cultural sites, fisheries, lands, and waterways.
- Concerns were raised about unsafe dams and additional costs on farmers because of the new dam safety requirements.
- Agreement with the policy with an emphasis on potential risk to life, property, and environment.



4































