

I hereby give notice that an extraordinary meeting of the Aotea / Great Barrier Local Board will be held on:

**Date:** Tuesday, 11 June 2024  
**Time:** 10:00 am  
**Meeting Room:** Aotea / Great Barrier Local Board office  
**Venue:** 81 Hector Sanderson Road  
Claris  
Aotea Great Barrier Island

---

## **Aotea / Great Barrier Local Board OPEN AGENDA**

---

### **MEMBERSHIP**

<b>Chairperson</b>	Izzy Fordham
<b>Deputy Chairperson</b>	Chris Ollivier
<b>Members</b>	Laura Caine
	Patrick O'Shea
	Neil Sanderson

(Quorum 3 members)

**Guia Nonoy**  
**Democracy Advisor**

**5 June 2024**

Contact Telephone: (09) 301 0101  
Email: [guia.nonoy@aucklandcouncil.govt.nz](mailto:guia.nonoy@aucklandcouncil.govt.nz)  
Website: [www.aucklandcouncil.govt.nz](http://www.aucklandcouncil.govt.nz)



<b>ITEM</b>	<b>TABLE OF CONTENTS</b>	<b>PAGE</b>
1	Nau mai   Welcome	5
2	Ngā Tamōtanga   Apologies	5
3	Te Whakapuaki i te Whai Pānga   Declaration of Interest	5
4	Adoption of the Aotea / Great Barrier Local Board Agreement 2024/2025	7



**1 Nau mai | Welcome**

Chairperson I Fordham will open the meeting and welcome everyone in attendance.

**2 Ngā Tamōtanga | Apologies**

At the close of the agenda no apologies had been received.

**3 Te Whakapuaki i te Whai Pānga | Declaration of Interest**

Members are reminded of the need to be vigilant to stand aside from decision making when a conflict arises between their role as a member and any private or other external interest they might have.



## Adoption of the Aotea / Great Barrier Local Board Agreement 2024/2025

File No.: CP2024/06971

Item 10

### **Te take mō te pūrongo** **Purpose of the report**

1. To adopt the local content for the Long-term Plan 2024-2034 which includes the Aotea / Great Barrier Local Board Agreement 2024/2025, the message from the chair, and approved local board advocacy.
2. To adopt a local fees and charges schedule for 2024/2025.

### **Whakarāpopototanga matua** **Executive summary**

3. The Local Government (Auckland Council) Act 2009 states that for each financial year, Auckland Council must have a local board agreement (as agreed between the Governing Body and the local board) for each local board area.
4. From 28 February to 28 March 2024, council consulted on the proposed Long-term Plan 2024-2034. Local boards considered the feedback received and then provided feedback to the Budget Committee at a workshop on 8 May 2024 on regional issues, community feedback, and key local board initiatives and advocacy areas.
5. The Aotea / Great Barrier Local Board formally resolved its feedback on the Long-term Plan 2024-2034 at its business meeting on 30 April 2024 (resolution number GBI/2024/46). That feedback was reported to the Budget Committee meeting on 16 May 2024 to be considered as part of the decision-making on the final Long-term Plan.
6. For the council to finalise the Long-term Plan 2024-2034, local boards need to approve the local content for the Long-term Plan 2024-2034. This includes a local board agreement, a message from the chair, and the approved local board advocacy, as well as a local fees and charges schedule for 2024/2025.
7. On 27 June 2024, the Governing Body will meet to adopt Auckland Council's Long-term Plan 2024-2034 including 21 local board agreements.

### **Ngā tūtohunga** **Recommendation/s**

That the Aotea / Great Barrier Local Board:

- a) whai / adopt the local content for the Long-term Plan 2024-2034, which includes the Aotea / Great Barrier Local Board Agreement 2024/2025, the message from the chair, and approved local board advocacy (Attachment A).
- b) whai / adopt a local fees and charges schedule for 2024/2025 (Attachment B).
- c) tautapa / delegate authority to the Chair to make any final minor changes to the local content for the Long-term Plan 2024-2034 (the Aotea / Great Barrier Local Board Agreement 2024/2025, message from the chair, and approved local board advocacy).
- d) tuhi ā-taipitopito /note that the Aotea / Great Barrier Local Board Agreement 2024/2025, will included in the Long-term Plan 2024-2034 to be adopted by the Governing Body when it meets on 27 June 2024.

## Horopaki Context

8. The Local Government (Auckland Council) Act 2009 states that for each financial year, Auckland Council must have a local board agreement, as agreed between the Governing Body and the local board, for each local board area.
9. The Aotea / Great Barrier local board agreement is informed by the Aotea / Great Barrier Local Board Plan 2023. Local board plans are developed every three years and outline the priorities and preferences of the communities within the local board area in respect of the level and nature of local activities to be provided by the Auckland Council in the local board area.
10. Throughout the development of the Long-term Plan 2024-2034, local board chairs (or delegated local board representatives) have had the opportunity to attend Budget Committee workshops on key topics and provide local board views on regional issues being considered as part of the Long-term Plan 2024-2034.
11. One event was held locally in the Aotea / Great Barrier Local Board area to engage with the community and seek feedback on both regional and local proposals.
12. A report analysing the feedback on local board priorities, as well as feedback from those living in the local board area related to the regional issues, was included on the 30 April 2024 business meeting agenda.
13. Local boards considered community feedback, and then provided feedback to the Budget Committee at a workshop on 8 May 2024 on regional issues, community feedback and key local board initiatives and advocacy areas.
14. The Aotea / Great Barrier Local Board formally resolved its feedback on the Long-term Plan 2024-2034 at its business meeting on 30 April 2024 (resolution number GBI/2024/46). That feedback was reported to the Budget Committee meeting on 16 May 2024 to be considered as part of the decision-making on the final Long-term Plan.
15. The Aotea / Great Barrier Local Board also approved advocacy initiatives for the Long-term Plan 2024-2034 at the 30 April 2024 business meeting (resolution number GBI/2024/46)

## Tātaritanga me ngā tohutohu Analysis and advice

### Aotea / Great Barrier Local Board Agreement

#### Key features of the local board agreement

16. The local content for the Long-term Plan 2024-2034 (Attachment A), includes the Local Board Agreement 2024/2025, the message from the chair, and approved local board advocacy
17. Table one below provides an outline of the sections in the local board agreement:



Section	Description
<b>Planned operating and capital spend in 2024/2025</b>	The planned capital spend to renew and develop assets and operating spend to maintain and operate assets as well as deliver local activities.
<b>Priorities by activity area</b>	Funding priorities, levels of service, and performance measures for local activities which contribute to key community outcomes.  These are set out under each local activity area: <ul style="list-style-type: none"> <li>• Local Community Services</li> <li>• Local Planning and Development</li> <li>• Local Environmental Management</li> <li>• Local Governance.</li> </ul>
<b>Funding Impact Statement</b>	This funding impact statement has been prepared to meet the requirements of Section 21(5) of the Local Government (Auckland Council) Act 2009. It covers the year from 1 July 2024 to 30 June 2025 and outlines the council's sources of funding for local activities in this local board area and the plan to apply them.

#### Consideration of submissions and feedback

18. The Aotea / Great Barrier Local Board has considered the submissions and feedback received as part of consultation on the Long-term Plan 2024-2034.
19. A full analysis of the submissions and feedback on the Long-term Plan 2024 – 2034 for Aotea / Great Barrier Local Board can be found here:  
[https://infocouncil.aucklandcouncil.govt.nz/Open/2024/04/20240430\\_GBI\\_AGN\\_12175\\_AT\\_EXTRA.PDF](https://infocouncil.aucklandcouncil.govt.nz/Open/2024/04/20240430_GBI_AGN_12175_AT_EXTRA.PDF)

#### Service levels and performance measures

20. As part of the Long-term Plan 2024-2034, the service performance measures framework has been reviewed against council's legislative requirement to have performance measures (and targets) that enable the public to assess the level of service for major aspects of local activities.
21. New performance measures and targets, different to prior years, are proposed for inclusion in the Local Board Agreement 2024/2025. These new measures better reflect local levels of service, but also local boards' increased decision making and their role in setting service levels for local activities.

#### **Local Fees and Charges**

22. The Governing Body has agreed to the setting of baseline fees and charges for Active Communities and venue hire spaces, and therefore these fees have been reflected in the schedule of fees to be adopted by the local board.

#### Pool and leisure centres

23. The review of fees and charges for Active Communities services have been split into two phases due to its size and complexity. The first phase of the fees, bookable spaces for hire

at 19 of the 25 council managed sites, were reviewed and adopted as part of the Annual Budget 2023/2024.

24. As part of the consultation on the Long-term Plan 2024-2034, the council consulted on the second phase of the review of fees and charges for Active Communities services, which focused on the appropriate level of cost recovery for all the services provided from pool and leisure centres including memberships, swim schools and entrance fees. The assessment of cost recovery was balanced with enabling the council to provide a service that can be accessed by all parts of the community across the network.
25. The second phase includes both council-managed pool and leisure facilities and memberships and aquatic entrance fees for facilities managed under contract. There are 45 Active Communities sites across the Auckland region, 25 of these are managed directly by Auckland Council.
26. The proposed changes introduce an Auckland wide membership option to allow customers to access all 45 pool and leisure council-managed and contracted sites. It is also proposed to align legacy and discontinued memberships to current membership options over three years.
27. The proposed changes will establish baseline fees for like services across Active Communities activities. This will mean that the impact on each facility will vary. Changes are proposed to the following baseline fees:
  - entrance to all council managed and contracted pools and leisure facilities along with an increased discount rate for qualifying customers.
  - swimming lessons to better align to market rates, along with a new discount rate for those who qualify.
  - OSCAR before and after school care and holiday programme fees to maximise government subsidies and ensure costs are recovered.
  - term programme fees to simplify the fees framework.
28. After reviewing local board feedback, changes have been made to the proposed supervising adult and spectator fees. The proposed fee for these services which was consulted on as part of the consultation document was set to increase however, this fee is now proposed to be retained at previous levels. However, the proposed decrease to the supervising adult fee at Tepid Baths and West Wave Pool and Leisure Centre fee is proposed to proceed as the fees at these facilities were generally much higher than at other sites.
29. Learn to swim fees have also been reviewed following consultation. As the current fees at Manurewa Pool and Leisure Centre (Manurewa Local Board), Moana-Nui-a-Kiwa Pool and Leisure Centre (Mangere-Otahuhu Local Board ) and babies fees at Tepid Baths (Waitemata Local Board) and Stanmore Bay (Hibiscus and Bays Local Board) are lower than those for the rest of the network, these fees are now proposed to be moved to a mid-point in financial year 2024/2025 to transition them to full alignment with the network in financial year 2025/2026.

#### Venue hire and bookable spaces

30. Venue hire and bookable spaces incorporates council managed community halls, community centres, art centres and bookable library spaces.
31. The review of this portfolio has been split into two phases. The consultation on the Long-term Plan 2024-2034 included proposals following phase one of the review of baseline fees

across similar venues to ensure they are charged appropriately across the portfolio. Fees for 252 bookable spaces at 110 venues are included in this review.

32. The existing pricing frameworks currently in place for bookable spaces contains variations and inconsistencies inherited from legacy councils. The basis for phase one of the review is the Hire Fee Framework which considers the size, condition and quality of each bookable space, the levels of staffing, the amenities available, and current patterns of utilisation of the spaces. Phase one of this review addresses variations within local board and adjacent areas to bring pricing of comparable venues closer together.
33. Fees for around half of the venues reviewed in phase one are not proposed to change as they have been set at an appropriate level when compared to spaces nearby or with similar types of spaces or capacity. While some fees are proposed to increase, a number of fees are proposed to decrease.
34. Phase two, planned for 2025/2026, will assess the appropriate level of cost recovery balancing value to the ratepayer and accessibility for customers and communities.
35. The current discounts framework is not proposed to change, and these will be applied to eligible community groups and regular hirers.

#### Other fees and charges

36. All other local fees and charges are proposed to increase by an inflationary adjustment of 4.7 per cent.

### **Tauākī whakaaweawe āhuarangi Climate impact statement**

37. The decisions recommended in this report are procedural in nature and will not have any climate impacts themselves.
38. Some of the proposed projects in the local board agreement may have climate impacts. The climate impacts of any projects the council chooses to progress with will be assessed as part of the relevant reporting requirements.
39. Some of the proposed projects in the local board agreement will be specifically designed to mitigate climate impacts, build resilience to climate impacts, and restore the natural environment.

### **Ngā whakaaweawe me ngā tirohanga a te rōpū Kaunihera Council group impacts and views**

40. Local boards worked with council departments to develop their local board work programmes for 2024/2025 that will be adopted at June business meetings. The draft local board work programmes help inform the local board agreements.

### **Ngā whakaaweawe ā-rohe me ngā tirohanga a te poari ā-rohe Local impacts and local board views**

41. This report seeks local board adoption of its content for the Long-term Plan 2024-2034 and other associated material, including the Local Board Agreement 2024/2025.

## Tauākī whakaaweawe Māori Māori impact statement

42. Many local board decisions are of importance to and impact on Māori. Local board agreements are important tools that enable and can demonstrate the council's responsiveness to Māori.
43. Local board plans, which were developed in 2023 through engagement with the community including Māori, form the basis of local priorities. There is a need to continue to build relationships between local boards and iwi, and where relevant, the wider Māori community.
44. Of those who submitted feedback on the Long-term Plan consultation, seven per cent identified as Māori. There were submissions from 23 Māori entities, many of which provided specific feedback on local priorities and advocacy. Of the 23 Māori entities, 12 presented feedback at a Town Hall Have Your Say event specifically for mana whenua and mātāwaka entities. These submissions were provided to the local board for consideration at local board workshops during the development of their local board agreement.
45. Ongoing conversations will assist local boards and Māori to understand each other's priorities and issues. This in turn can influence and encourage Māori participation in the council's decision-making processes.

## Ngā ritenga ā-pūtea Financial implications

46. The local board agreement includes the allocation of locally driven initiatives (LDI) funding and asset based services (ABS) funding to projects and services for the 2024/2025 financial year.
47. LDI funding is discretionary funding allocated to local boards based on the Local Board Funding Policy, which local boards can spend on priorities for their communities. Local boards can also utilise LDI funding to increase local levels of service if they wish to do so.
48. Funding for ABS is allocated by the Governing Body to local boards based on current levels of service to run and maintain local assets and services including parks, pools and recreation facilities, community facilities, and libraries.
49. As part of the Long-term Plan 2024-2034 decisions the Governing Body adopted to amend the Local Board Funding Policy to take effect from 1 July 2025. As part of this change there will no longer be a differentiation between ABS and LDI funding after 2024/2025 and funding will be allocated to bring 18 local boards to within 5 per cent of funding equity within four years.
50. A local fees and charges schedule for 2024/2025 is adopted alongside the Local Board Agreement 2024/2025. The fees and charges have been formulated based on region-wide baseline service levels and revenue targets. Where fees and charges are amended by a local board that results in lower revenue for the council, the shortfall will need to be made up by either allocating LDI funds or reducing expenditure on other services to balance overall budgets.

## Ngā raru tūpono me ngā whakamaurutanga Risks and mitigations

51. Decisions on the local content of the Long-term Plan 2024-2034, including the Local Board Agreement 2024/2025 and a local fees and charges schedule for 2024/2025, are required by 13 June 2024 to ensure the Governing Body can adopt the final Long-term Plan 2024-2034 including each local board agreement, at its 27 June 2024 meeting.

## Ngā koringa ā-muri

### Next steps

52. The Governing Body will meet on 27 June 2024 to adopt the Long-term Plan 2024-2034, including the 21 local board agreements in volume 3.
53. It is possible that minor changes may need to be made to the attachments before the Long-term Plan 2024-2034 is adopted, such as correction of any errors identified and minor wording changes. Staff therefore recommend that the local board delegates authority to the Chair to make any final changes if necessary.
54. Local board agreements set the priorities and budget envelopes for each financial year. Work programmes then detail the activities that will be delivered within those budget envelopes. Work programmes will be agreed between local boards and operational departments at business meetings in June 2024.

## Ngā tāpirihanga

### Attachments

No.	Title	Page
<a href="#">A</a>	Local content to support the Annual Budget 2024/2025: <ul style="list-style-type: none"><li>o Local Board Agreement 2024/2025</li><li>o Message from the Chair</li><li>o Local board advocacy</li></ul>	15
<a href="#">B</a>	Local fees and charges schedule 2024/2025	25

## Ngā kaihaina

### Signatories

Author	Jacqui Fyers - Senior Local Board Advisor
Authoriser	Glenn Boyd - Local Area Manager



Te Poari ā-Rohe o Aotea

## **Aotea / Great Barrier Local Board**

He kōrero mai i te Heamana

### **Message from the Chair**

Times feel pretty tough at the moment with high living costs and the stripping back of central government support as they cut their cloth to meet their budgets. And we are still recovering from the aftermath of the pandemic and the storms.

Despite all that our Aotea community are delivering some incredible community-led projects like the establishment of an early learning childhood centre, local composting workshops, regular food markets, wetland planting in Okupu, Asian paddle crab and cockle monitoring in the north. Those are just a few of the projects on the go.

AoteaOra Trust held an event acknowledging the hard work of local groups and volunteers. We would also like to pass on our thanks for all that you do.

Recently Auckland Council consulted on the proposed Long-term Plan 2024-2034 which covered a range of topics including the setting of rates and outlined the local board's proposed priorities for financial year 2024/2025.

There was clear support for the local board to continue funding local groups to deliver locally led community services, environmental programmes, and marine protection projects.

Therefore, for financial year 2024/2025 we will continue to provide grants to local groups to deliver community services and environmental projects, and for council to deliver core operational services.

We will also continue our advocacy for the protection of our coastal waters with local Ahu Moana projects and the response to exotic Caulerpa.

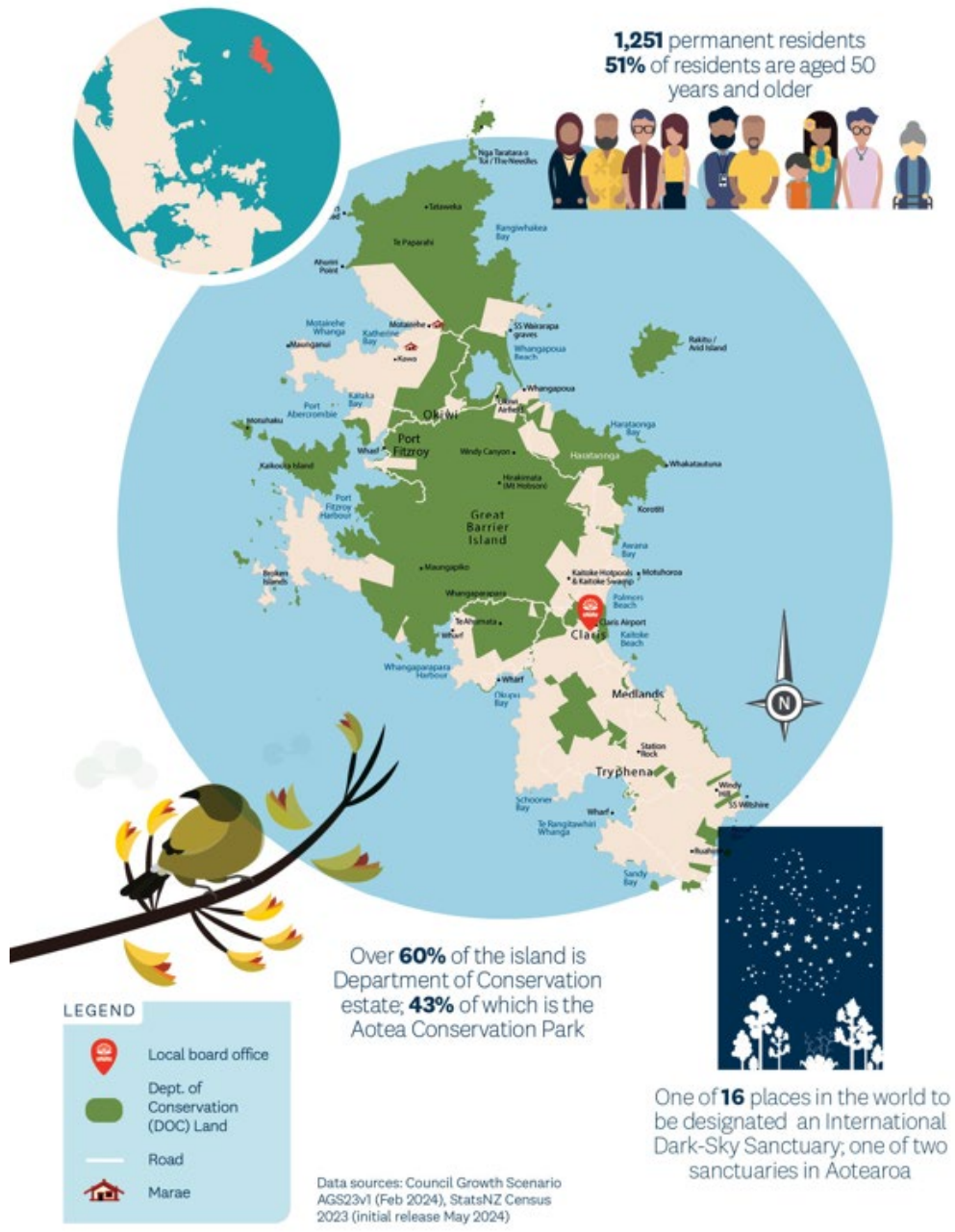
Take care,



Izzy Fordham

Chairperson Aotea / Great Barrier Local Board

**Aotea / Great Barrier Local Board area**





## Aotea / Great Barrier Local Board Plan 2023

The Aotea / Great Barrier Local Board Plan 2023 sets out the aspirations the local board has for the area. The outcomes in the Aotea / Great Barrier Local Board Plan are:

Ō Tātou Tāngata

### Our People

We see a future where mana whenua aspirations are realised and relationships are respected; where our community is resilient and cared for; a place where our community groups are empowered, sustainable and independent; where our local businesses and social enterprises retain employment; an island that is a great place to live and visit.

Ō Tātou Wāhi

### Our Places

We see a future where our wharves and airfields meet our needs; where our connectivity is fast and reliable; a place where our roads are sealed, well maintained, and shared safely; where our accessways and tracks link up to our village spaces; an island that has affordable and sustainable housing for everyone.

Tō Tātou Taiao

### Our Environment

We see a future where our community deals with pests collaboratively; where our food and water supply are safe and secure; a place that protects and celebrates its night sky; where we showcase zero waste and low carbon practices; an island where our streams run clean and free, and marine waters are protected and full of life.

The local board agreement outlined in this document reflects how we plan to support these outcomes through agreed activities in the 2024/2025 financial year. In addition, each local board carries out responsibilities delegated by the Governing Body in accordance with the delegated power, and with the general priorities and preferences in the local board plan.

## Working with Māori

Delivering on Auckland Council's commitment to Māori at a local level is a priority for local boards. The council is committed to meeting its responsibilities under Te Tiriti o Waitangi / the Treaty of Waitangi and its broader statutory obligations to Māori.

To meet this commitment, the Aotea / Great Barrier Local Board Plan seeks to deliver outcomes for Māori. Initiatives that deliver Māori outcomes are those which support Māori identity and culture, advance Māori well-being and support Māori to participate in local decision-making as identified in the "Kia Ora Tāmaki Makaurau" framework. Examples of this include:

- Identifying opportunities to work together to build strong relationships with Mana Whenua and share information with Māori.
- Collaborating with iwi on projects of significance such as Tū Mai Tāonga, Ahu Moana, exotic Caulerpa response, and visitor information.
- Taking opportunities to create a Māori identity in our parks and facilities through actions such as naming or renaming and sharing stories about the area's heritage through interpretative signage and the installation of pou whenua.

## Aotea / Great Barrier Local Board Agreement 2024/2025

### Planned operating and capital spend in 2024/2025

Key areas of spend	Community Services	Environmental Services	Planning Services	Governance	Total
Planned Operating Spend 2024/2025	\$1.7 million	\$141,000	\$0	\$707,000	\$2.5 million
Planned Capital Spend 2024/2025	\$400,000	-	-	-	\$400,000

### Priorities by activity area

Auckland Council's 2024/2025 funding priorities for local activities which contribute to key community outcomes in the Aotea / Great Barrier Local Board area are set out below under each local activity.

#### Local Community Services

We support strong, diverse, and vibrant communities through libraries and literacy, arts and culture, parks, sport and recreation, and events delivered by a mix of council services, community group partnerships and volunteers.

Our annual budget to deliver these activities includes operating costs of \$1.7 million and capital investment of \$400,000

The key initiatives we have planned for 2024/2025 include:

- funding community groups to deliver elderly, youth, business, housing and resilience services
- funding a food resilience co-ordinator and community garden manager
- funding Ngāti Rehua Ngātiwai ki Aotea Trust to deliver the Visitor Information Centre
- continuing our regular maintenance of parks and assets including improvements for playgrounds
- supporting implementation of aspects of the new Destination Management Plan.

The local community services and key initiatives outlined above contribute towards achieving the following outcome/s in the Aotea / Great Barrier Local Board Plan:

- Our People
- Our Environment
- Our Places

#### Levels of Service

We measure our performance against the following measures for each local priority. The level of service statement is in bold below.

Performance measure	Actual 2022/2023	Annual Plan Target 2023/2024	Long-term Plan Target 2024/2025
<b>Enable a range of choices to access community services and recreation opportunities</b>			
Number of visits to library facilities <sup>1</sup>	10,172	13,000	10,900
Percentage of time physical library services are accessible to the community	New measure	New measure	100%
Percentage of local community facility asset components that are not in poor or very poor condition	New measure	New measure	88%

<b>Provide opportunities for communities to lead and deliver their own initiatives</b>			
Number of partner organisations supported to sustain their governance capacity and capability	New measure	New measure	12
Number of partner organisations and groups funded to deliver placemaking activities	New measure	New measure	15
<b>Provide urban green spaces (local parks, paths and Ngahere) and access to the coast</b>			
Percentage of local parks, facilities and spaces meeting maintenance quality standards.	New measure	New measure	90%
Percentage of local open space asset components that are not in poor or very poor condition	New measure	New measure	97%

<sup>1</sup> The Great Barrier Service Centre and Library are one multi use facility. There are no intended service level changes to the library, the baseline for the target has been reviewed to reflect post-pandemic realities and changing customers' preferences and demand.

### Local Environmental Management

We support healthy ecosystems and sustainability through local board-funded initiatives such as planting, pest control, stream and water quality enhancements, healthy homes, and waste minimisation projects.

Our annual operating budget to deliver these activities is \$141,000.

The key initiatives we have planned for 2024/2025 include:

- funding community-led environmental groups including Oruawharo Medlands Ecovision, Ecology Vision and the Okiwi ecology programme
- funding Aotea zero waste leadership projects and a construction and demolition waste advisor.

The local environmental management activity and key initiatives outlined above contribute towards achieving the following outcome/s in the Aotea / Great Barrier Local Board Plan:

- Our People
- Our Environment
- Our Places

### Levels of Service

We measure our performance against the following measures for each local priority. The level of service statement is in bold below.

<b>Performance measure</b>	<b>Actual 2022/2023</b>	<b>Annual Plan Target 2023/2024</b>	<b>Long-term Plan Target 2024/2025</b>
<b>Protect, improve and minimise risks to the natural environments and cultural heritage</b>			
Number of community events around natural environment enhancement	New measure	New measure	21
Number of community groups supported to undertake waste initiatives	New measure	New measure	5

### Local Governance

Activities in this group support the local board to engage with and represent their communities and make decisions on local activities. This support includes providing strategic advice, leadership of the preparation of local board plans, support in developing local board agreements, community engagement including relationships with mana whenua and Māori communities, and democracy and administrative support.

Our annual operating budget to deliver these activities is \$707,000.

Levels of Service

We measure our performance against the following measures for each local priority. The level of service statement is in bold below.

<b>Performance measure</b>	<b>Actual 2022/2023</b>	<b>Annual Plan Target 2023/2024</b>	<b>Long-term Plan Target 2024/2025</b>
<b>Respond to the needs and aspirations of mana whenua and Māori communities</b>			
Number of local activities that deliver moderate to high outcomes for Māori as outlined in 'Kia Ora Tamaki Makaurau' (Council's Māori outcomes framework).	New measure	New measure	Set baseline

## Funding Impact Statement

This prospective funding impact statement has been prepared to meet the requirements of Section 21(5) of the Local Government (Auckland Council) Act 2009. It covers the year from 1 July 2024 to 30 June 2025 and outlines the council's sources of funding for local activities in this local board area and our plan to apply them.

\$000	Annual Plan 2023/2024	Long-term Plan 2024/2025
<b>Financial year ending 30 June</b>		
<b>Sources of operating funding:</b>		
General rates, UAGCs, rates penalties	2,818	3,002
Targeted rates	0	0
Subsidies and grants for operating purposes	0	0
Fees and charges	0	0
Local authorities fuel tax, fines, infringement fees and other receipts	2	2
<b>Total operating funding</b>	<b>2,820</b>	<b>3,003</b>
<b>Applications of operating funding:</b>		
Payment to staff and suppliers	2,360	2,399
Finance costs	101	288
Internal charges and overheads applied	359	316
Other operating funding applications	0	0
<b>Total applications of operating funding</b>	<b>2,820</b>	<b>3,003</b>
<b>Surplus (deficit) of operating funding</b>	<b>(1)</b>	<b>1</b>
<b>Sources of capital funding:</b>		
Subsidies and grants for capital expenditure	0	0
Development and financial contributions	0	0
Increase (decrease) in debt	291	399
Gross proceeds from sale of assets	0	0
Lump sum contributions	0	0
Other dedicated capital funding	0	0
<b>Total sources of capital funding</b>	<b>291</b>	<b>399</b>
<b>Application of capital funding:</b>		
Capital expenditure:		
- to meet additional demand	54	3
- to improve the level of service	26	234
- to replace existing assets	210	164
Increase (decrease) in reserves	0	0
Increase (decrease) in investments	0	0
<b>Total applications of capital funding</b>	<b>290</b>	<b>400</b>
<b>Surplus (deficit) of capital funding</b>	<b>1</b>	<b>(1)</b>
<b>Funding balance</b>	<b>0</b>	<b>0</b>

## Appendix A: Advocacy initiatives






A key role of the local board is to advocate for initiatives that the local board may not have decision-making responsibility or funding for but recognise the value it will add to the local community.

The key initiatives that the local board advocated for as part of the long-term plan were:

Initiative	Description
<b>Exotic Caulerpa and marine biosecurity</b>	<p>Exotic Caulerpa is wreaking havoc in our Hauraki Gulf Marine Park. We require assistance to reduce the spread and impact.</p> <p>We are seeking:</p> <ul style="list-style-type: none"> <li>continued funding for surveillance and monitoring of exotic Caulerpa within the Gulf</li> <li>continued funding to combat the spread, removal and disposal of exotic Caulerpa</li> <li>continued advocacy to central government for increased MPI/Biosecurity NZ funding</li> <li>installation of council-owned short stay moorings</li> <li>investigations into the installation of an island-based hull cleaning facility.</li> </ul>
<b>Tū Mai Tāonga</b>	<p>Tū Mai Tāonga is a mana whenua-led conservation project to remove feral cats and rats from Aotea / Great Barrier Island. Employs up to 30 whanau and local people. The project has funding from Jobs for Nature, Predator Free 2050 and Auckland Council.</p> <p>We are seeking:</p> <ul style="list-style-type: none"> <li>continued funding to support the mana whenua-led restoration project Tū Mai Tāonga.</li> </ul>
<b>Landfill closure</b>	<p>The island's only landfill in Claris has been closed. Waste is either being recycled through the local resource recovery store or shipped off island. The remediation of the site including location of the island's wastewater treatment plant is not secured in the budgets.</p> <p>We are seeking:</p> <ul style="list-style-type: none"> <li>funding for the remediation of the landfill site</li> <li>funding for the new location of the transfer station and septage fields</li> <li>continued funding for community-led recycling, reusing and composting projects.</li> </ul>
<b>Visitor levy solution</b>	<p>In 2012, Stewart Island/Rakiura established a visitor levy to help better provide services, facilities, amenities for island visitors, or mitigate environmental effects. We have been looking into opportunities for Aotea.</p> <p>We are seeking:</p> <ul style="list-style-type: none"> <li>support for our investigations into a voluntary visitor levy.</li> </ul>

## Appendix B: How to contact your Local Board

Local boards have been established to enable local representation and decision-making on behalf of local communities. You are encouraged to contact your elected members to have your say on matters that are important to your community.

 <p><b>Izzy Fordham</b> Chairperson m.021 286 7555 <a href="mailto:izzy.fordham@aucklandcouncil.govt.nz">izzy.fordham@aucklandcouncil.govt.nz</a></p>	 <p><b>Patrick O'Shea</b> m.021 352 128 <a href="mailto:patrick.oshea@aucklandcouncil.govt.nz">patrick.oshea@aucklandcouncil.govt.nz</a></p>
 <p><b>Neil Sanderson</b> m. 027 334 1113 <a href="mailto:neil.sanderson@aucklandcouncil.govt.nz">neil.sanderson@aucklandcouncil.govt.nz</a></p>	 <p><b>Chris Ollivier</b> Deputy Chairperson m.027 225 4302 <a href="mailto:chris.ollivier@aucklandcouncil.govt.nz">chris.ollivier@aucklandcouncil.govt.nz</a></p>
 <p><b>Laura Caine</b> m. 027 224 8576 <a href="mailto:laura.caine@aucklandcouncil.govt.nz">laura.caine@aucklandcouncil.govt.nz</a></p>	

The board can be contacted on:

[AoteaGreatBarrierLocalBoard@aucklandcouncil.govt.nz](mailto:AoteaGreatBarrierLocalBoard@aucklandcouncil.govt.nz)

For general enquiries, assistance and information, phone 09 301 0101 any time or visit [www.aucklandcouncil.govt.nz](http://www.aucklandcouncil.govt.nz)

Local board meetings, agendas and minutes are available on the Auckland Council website: [www.aucklandcouncil.govt.nz](http://www.aucklandcouncil.govt.nz) > About council > Meetings and agendas





