

Date: Tuesday 4 February 2025
Time: 10:15 am
Meeting Room: Local Board Office
Venue: Online via Microsoft Teams

Maungakiekie-Tāmaki Local Board Workshop

OPEN NOTES ITEM ATTACHMENTS

ITEM	TABLE OF CONTENTS	PAGE
3	Local Board Workshop	
A.	Item 3: Attachment A Panmure Sign Project presentation.	3
B.	Item 4: Wayfynders presentation	21
C.	Item 5: Fergusson Domain Concept plan presentation	37
D.	Item 5A: Draft Fergusson Domain Concept plan	45
E.	Item 6: Maungakiekie-Tāmaki play plan 2024 presentation	47
F.	Item 6A: Maungakiekie-Tāmaki play plan memo	53
G.	Item 6B: Maungakiekie-Tāmaki Play Plan 2024 V2	57

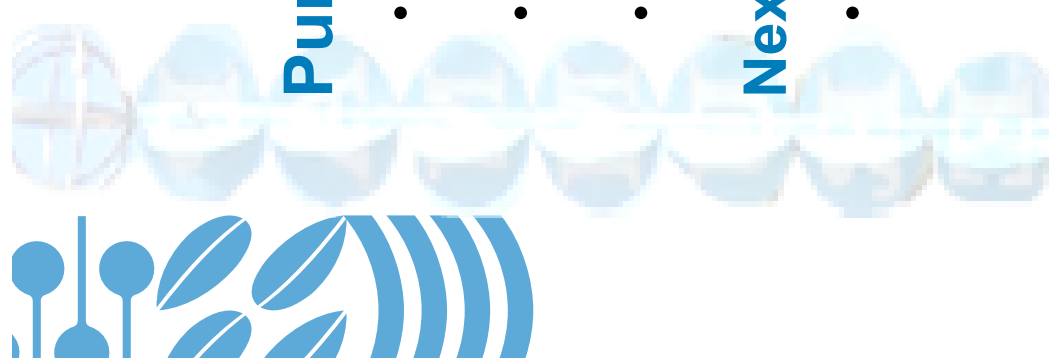
Feasibility of options for the Panmure Sign: Community engagement update

5 February 2025

Tony Hart – Independent Consultant, Mako Mako
Marcel Morgen – Manager Area Operations, Parks and Community Facilities



Maungakiekie-Tāmaki
Local Board
Auckland Council



Purpose:

- To update the board on the AK Have Your Say process and present the community's voice.
- To show updated location and options analysis based on community feedback.
- Seek local board direction on location and options.

Next Steps:

- Move to business meeting report for 25 March 2025.

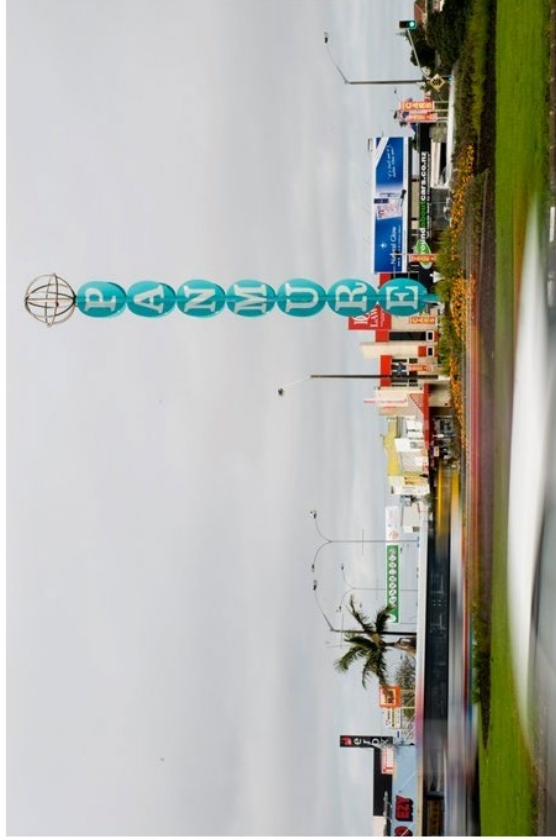


AK Have Your Say Process

- **Timeline:** 11 November - 6 December 2024
- **Submissions Received:** 193
- **Key Questions:**
 - How would you like the \$250,000 budget to benefit the Panmure community?
 - Due to the structural integrity of the original sign, it can't be reinstated. Do you have any ideas on what we should do with the original Panmure Sign?

Have your say on the Panmure sign

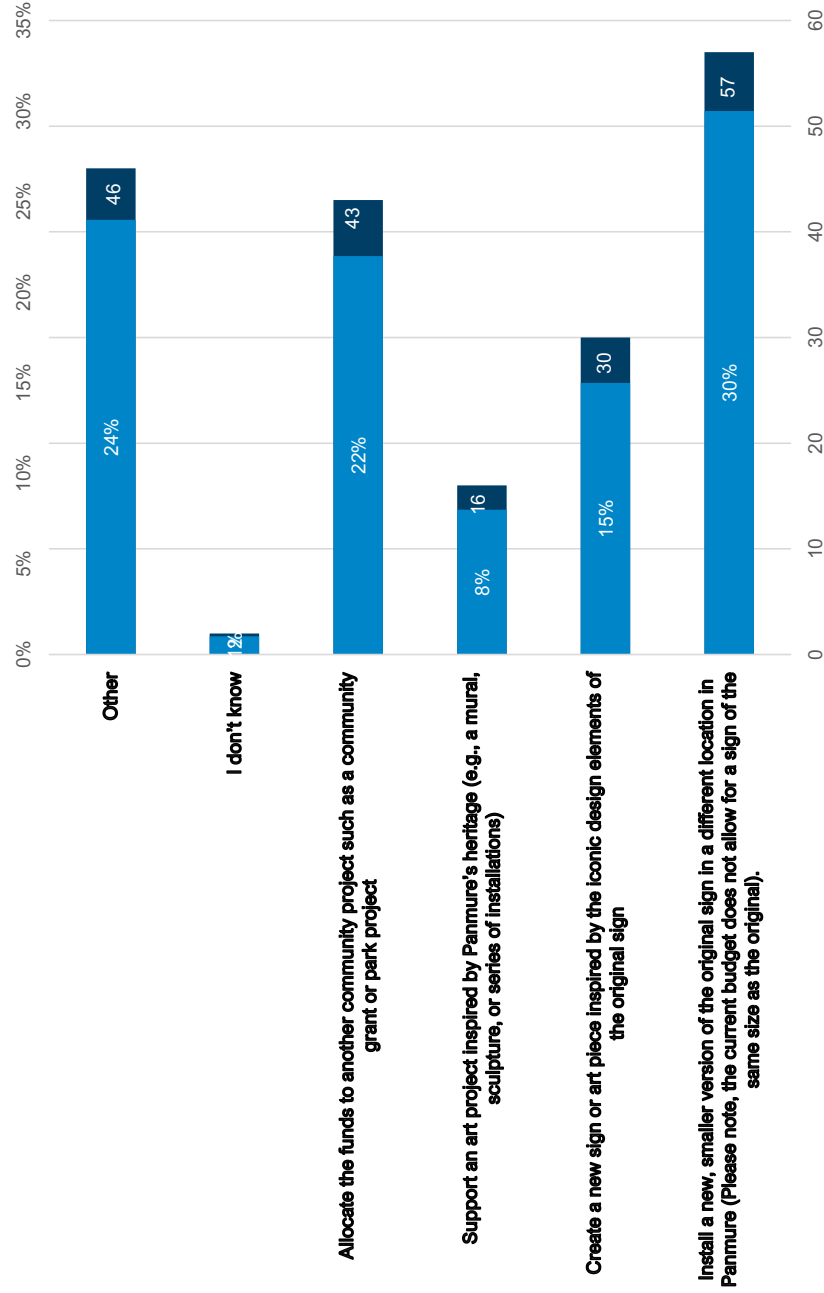
Last Updated : 11 Nov 2024 COMMUNITY MAUNGAKIEKIE-TĀMAKI WARD





Community Feedback - Budget Allocation

Question 1. How would you like the \$250,000 budget to benefit the Panmure community? (194 responses)





How would you like the \$250,000 budget to benefit the Panmure community?

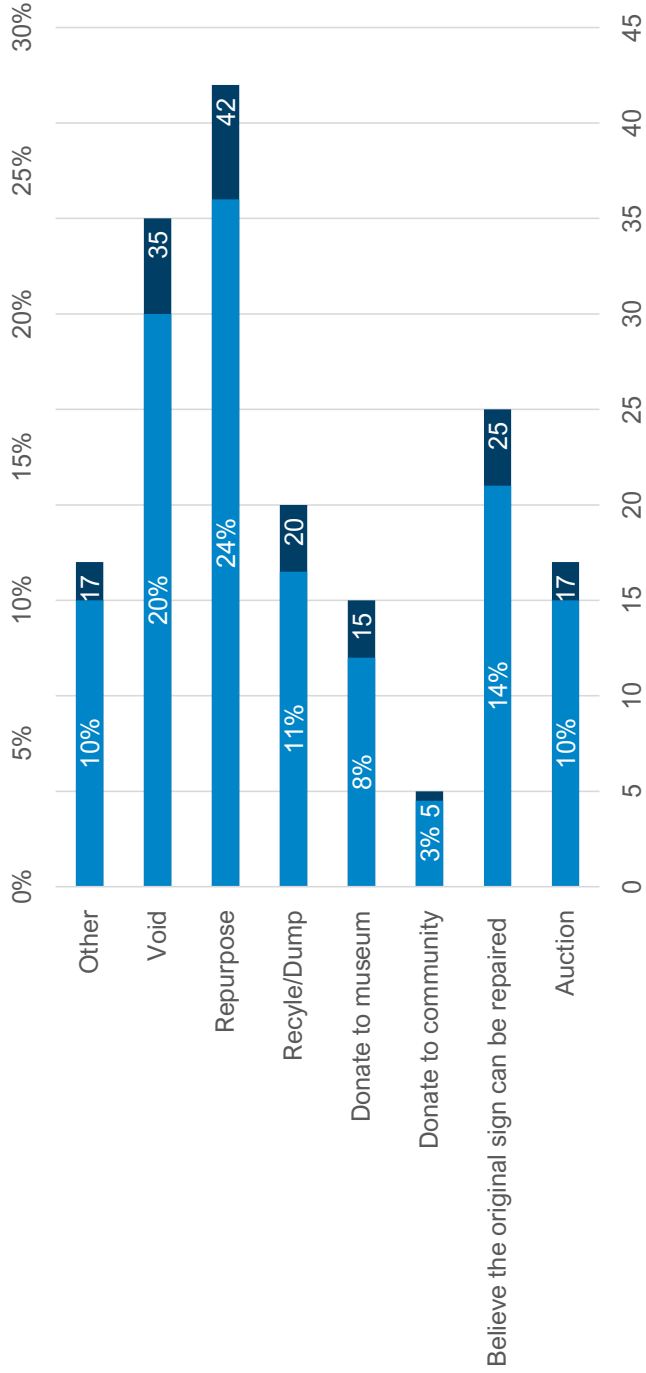
- a. Install a new, smaller version of the original sign in a different location in Panmure: 30% (57)
 - Received the most submissions
 - Clear mandate that the community would like to see a smaller version in a different location.
 - Various locations suggested
- b. Other: 24% (46)
 - Submissions focused on historical issues through the AMETI process.
 - Wanted the original sign in the original or previously discussed locations.
 - Accusations of a flawed AK Have Your Say survey and process.
 - Didn't engage with the question asked
- c. Allocate the funds to another community project such as a community grant or park project: 22% (43)
 - Strong feeling in the community that the money would be better spent elsewhere
 - Comments included:
 - “return money to Council”
 - “host more community events”
 - “better traffic signage and road marking”
 - “Spend money on making a safer community”
- d. Support an art project inspired by Panmure's heritage (e.g., a mural, sculpture, or series of installations): 8% (16)
 - Community like the idea of creating something new which reflected the sign.
 - As a standalone question, submissions received only 8%.
 - However, this increases significantly when combined with Question 3.





Community Feedback - Repurposing the Original Sign

Question 3. Due to the structural integrity of the original sign, it can't be reinstated.
Do you have any ideas on what we should do with the original Panmure Sign?





Due to the structural integrity of the original sign, it can't be reinstated. Do you have any ideas on what we should do with the original Panmure Sign? (1/2)

- “Repurpose” Received the most submissions with 24% (42)
- 176 Submissions in total with some new themes learnt through the submissions
- Lots of similar ideas of how to incorporate into a new art piece
 - *“Incorporating it into an art piece somewhere around the new town square at the end of Pilkington road :)”*
 - *“Keep a single letter, pop it on display somewhere and dispose of the rest.”*
 - Make it a garden sculpture in a new park or existing park.
 - *“Maybe the individual letters could be repurposed as sort of markers of important or significant places around the area. Follow the letters for a tour around Panmure.”*
 - *“Take off the individual letters (if possible) and realign them horizontally on top of a prominent building or viewpoint.”*
 - *“Split the circles up and put them above the completed Jubilee Bridge so it can be read horizontally. That way it can be seen from both entrances to the estuary and isn't structurally dubious.”*

‘Void’: Received 20% of submissions (35):

- These responses were deemed as void as submission weren't related to the question being asked
- Submissions were focused on historical sentiment related to the removal of the original sign and suggested locations that were outside of the designation.





Due to the structural integrity of the original sign, it can't be reinstated. Do you have any ideas on what we should do with the original Panmure Sign? (2/2)

Believe the sign can be repaired' 14% (25):

- Strong belief that the original sign can be repaired, but the board are unwilling to do so.
- Request another assessment undertaken

Recycle or dump 11% (20)

Auction 10% (17)

- Submissions suggest either auction the whole sign or
- Individual pieces in order to raise money for charity or other project

Donate to a museum 8% (15)

- MOTAT was the most specifically suggested

Donate to community 3% (5) Submissions included:

- *“Put out expressions of interest for the community, with members of the community on the panel.”*
- *“\$250,000.00 + a group of volunteers dedicated to bringing this back? Where there is a will there is a way! Leshgo!”*





Location Option 1:
525 Ellerslie
Panmure Highway

Pros:

- Replicates the original sign in a similar location.
- Fulfills feedback around wanting a "Gateway to Panmure."
- Could restore some trust in the relationship with the community as it is close to an earlier proposed location

Cons:

- Requires landowner approval from Auckland Transport.
- Will need to remain below 8m or will require an encroachment license.





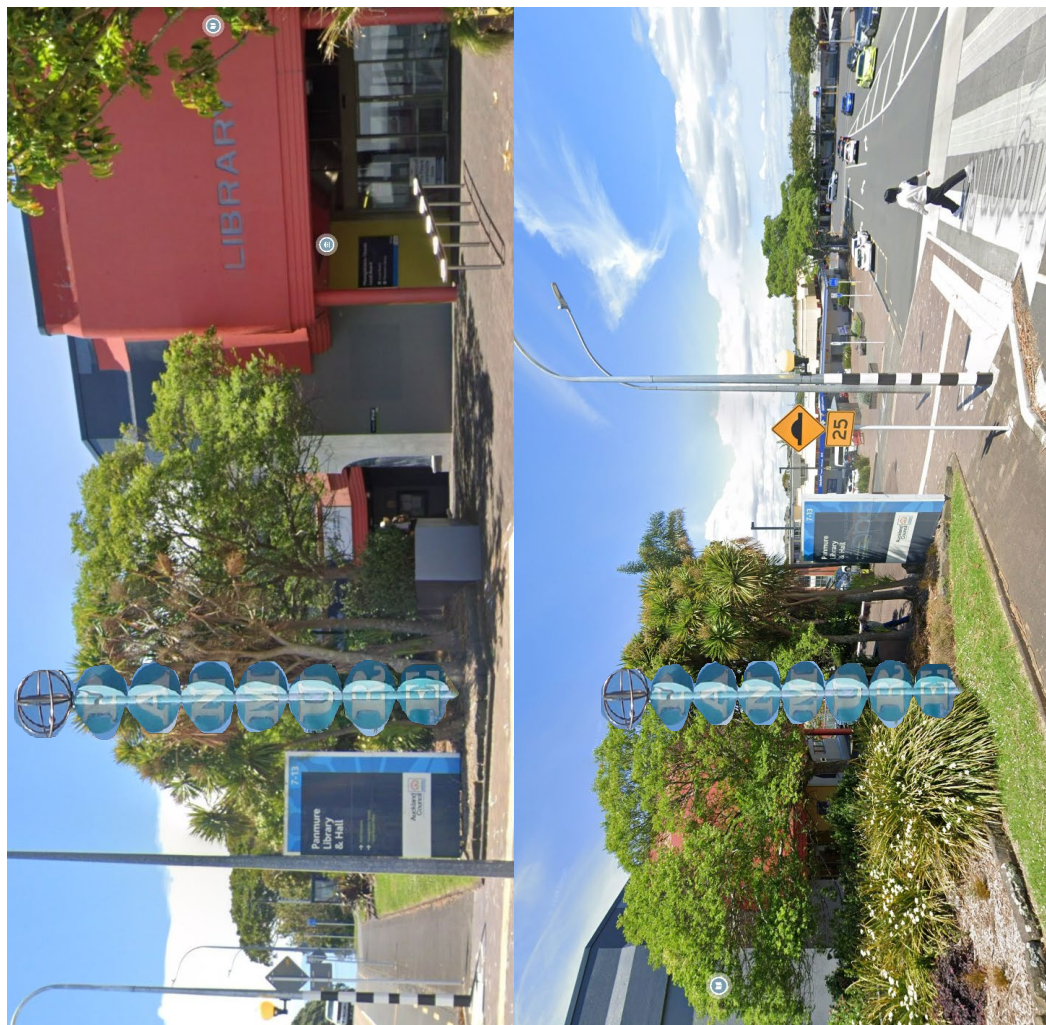
**Location Option 2:
17 Pilkington Road**

Pros:

- Replica sign near to the library and Local Board office.
- May give the area some vibrancy near a community hub and Clifton Court.
- Local Board has landowner authority.

Cons:

- Smaller sign - 6m max allowance but would fit well in the location.
- Not as visible.





**Location Option 3:
Kings Road-
Queens Road
Junction**

Pros:

- Visible location

Cons:

- Limited footprint.
- Potential sightline issues that have not been investigated.
- Not as prominently visible for many as Option 1.
- Requires landowner approval from Auckland Transport.
- Will need to remain below 8m or will require an encroachment license.





**Location Option 4:
Queens Road to
Korma Lane
Upgrade**

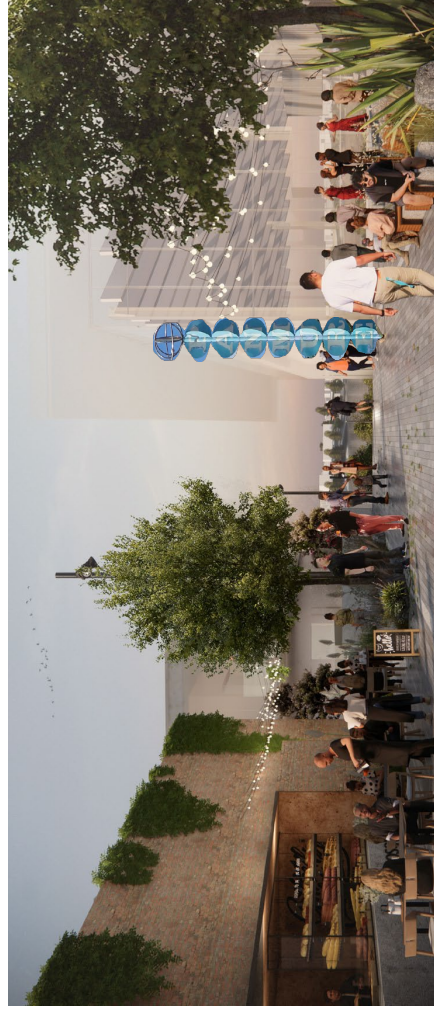


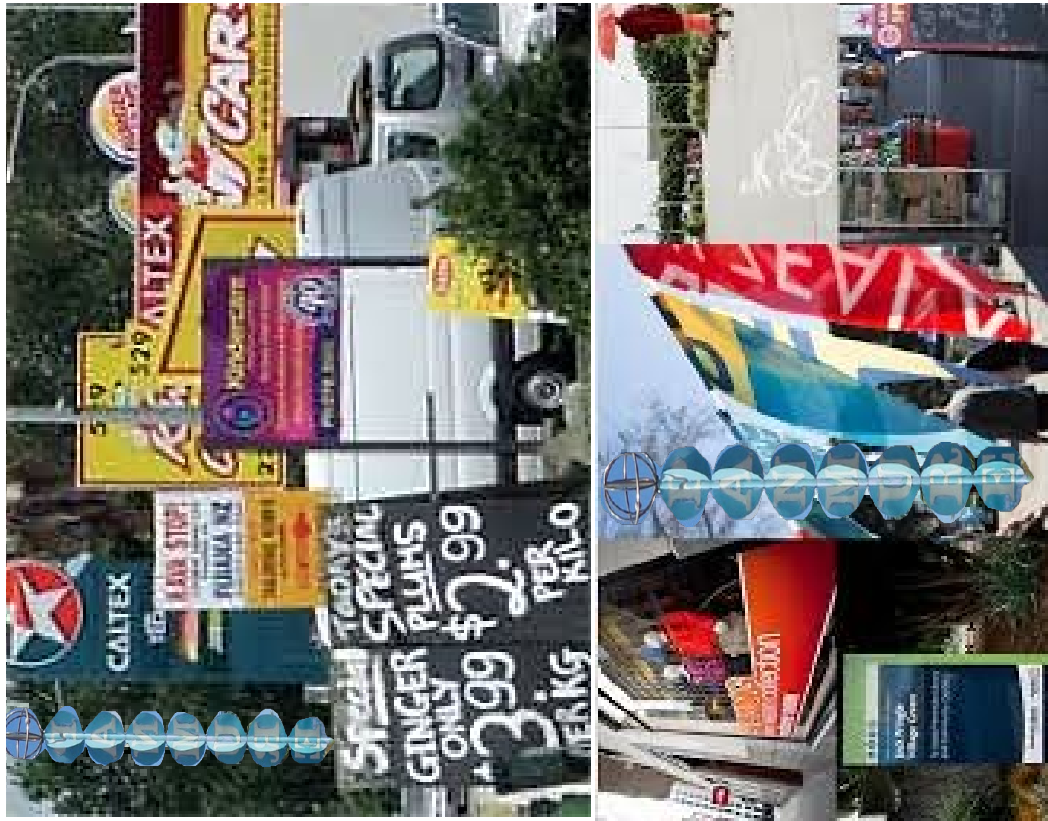
Pros:

- Potential to be incorporated into the town centre design.

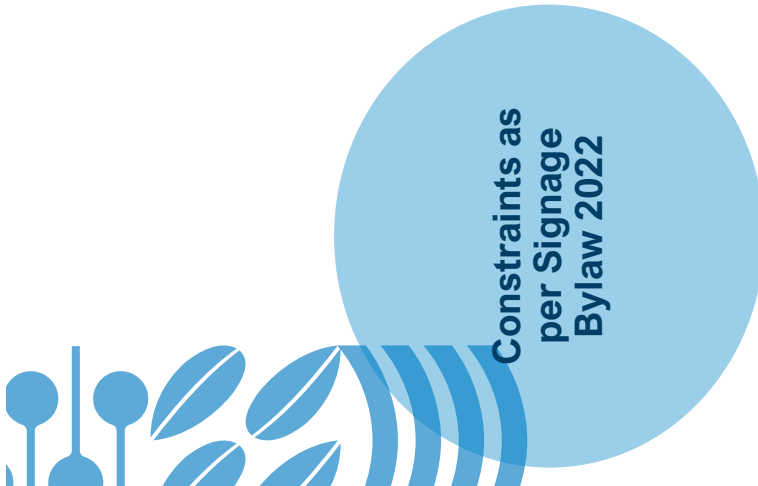
Cons:

- Installation would take 3-5 years.
- Not recommended due to the risk of not fitting the new town centre design brief or consultation feedback.
- Smaller sign - 6m max allowance,

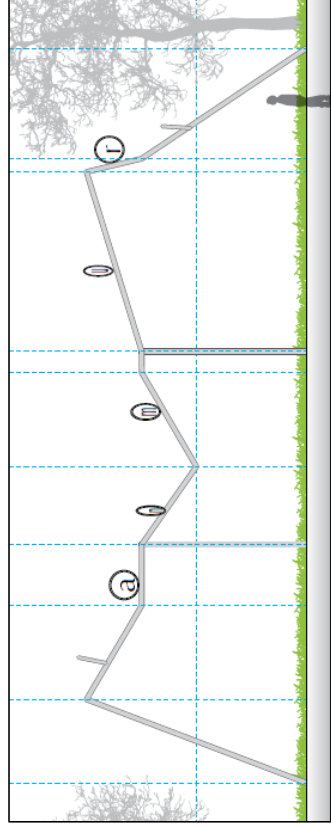
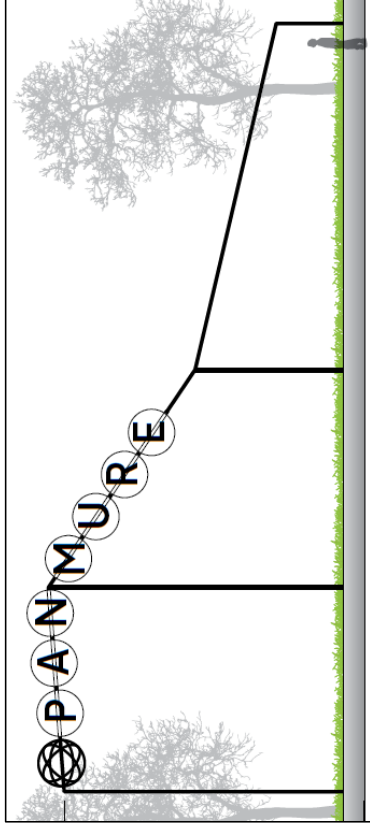
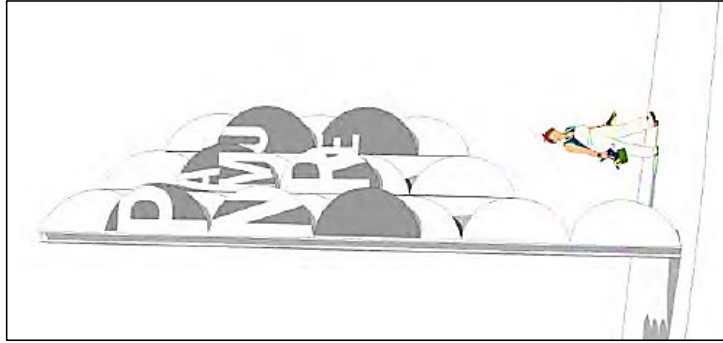




- **Area:** 4m² max
- **Width:** 2m max
- **AC Height:** 6m max
- **AT Height:** 8m max

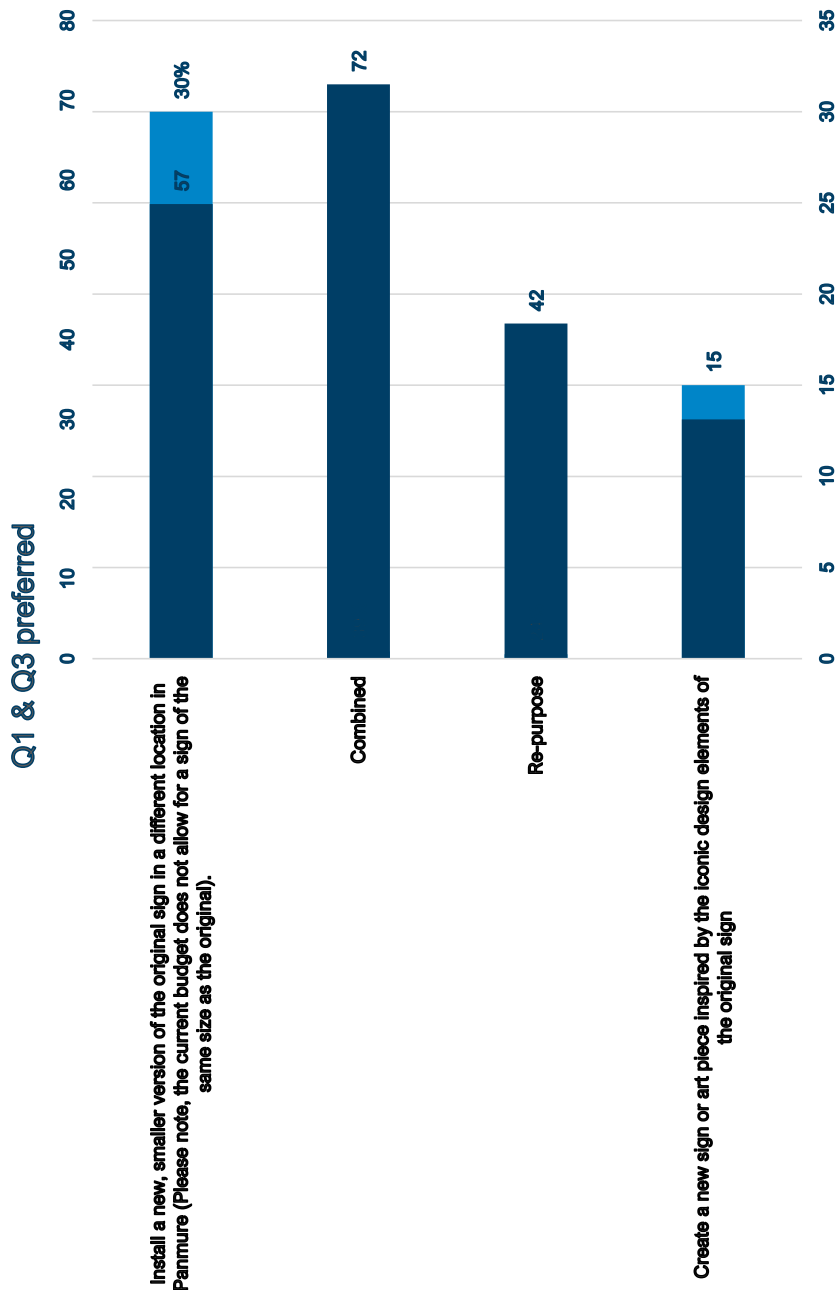


Concepts of original sign incorporated into a art piece



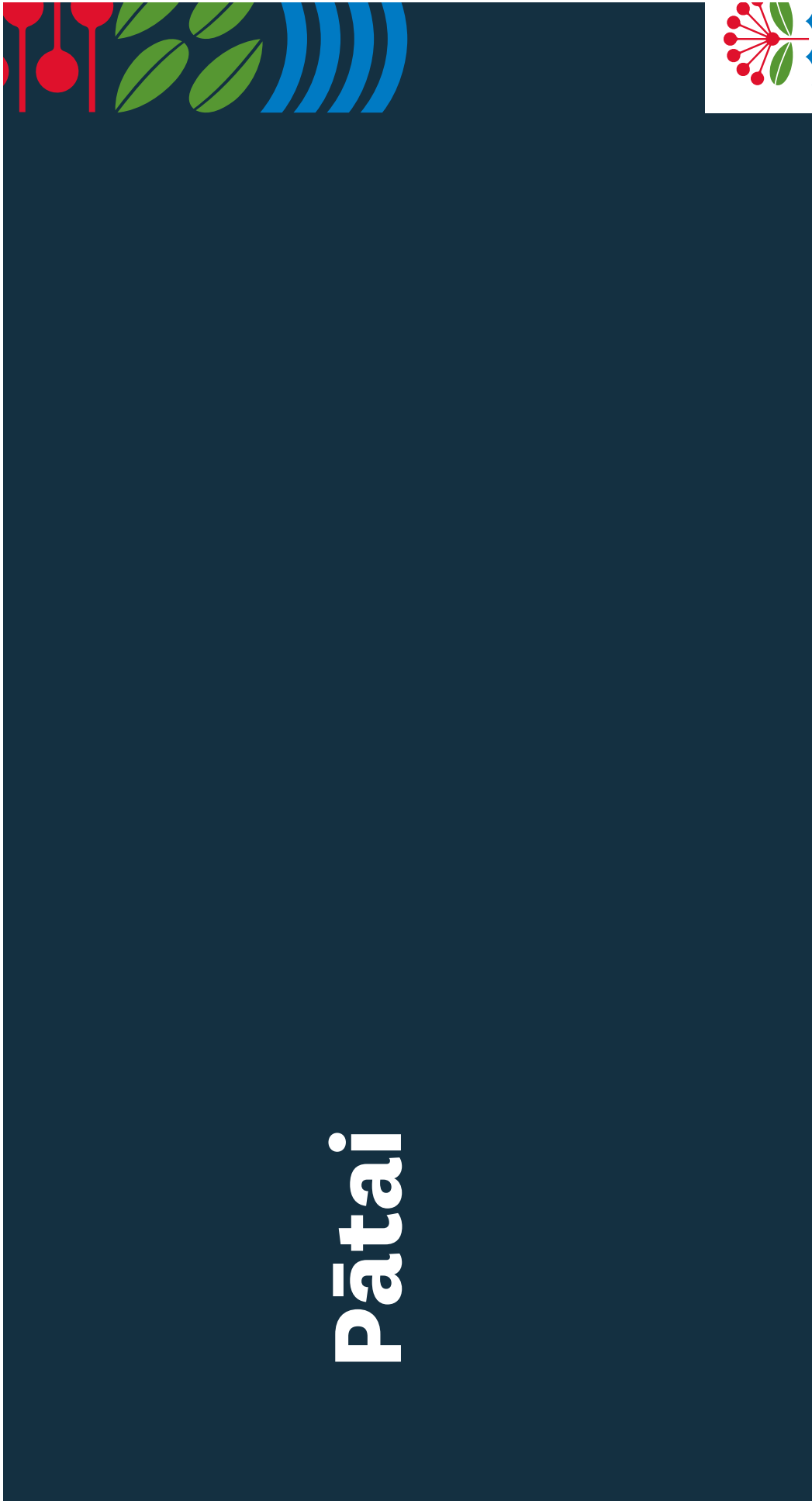


Key themes from the community feedback



Item 5

Attachment A



Next steps

Today -
March

- Confirm direction from board members on preferred location and option.
- Prepare business meeting report for 25 March

April -
June

- Upon receiving the resolution, close out feedback through AK Have Your Say.
- Update project activity description to match the resolution in the 2025/2026 local board work programme (adoption in June 2025).

July 2025
onwards

- Begin procurement process aligned with the local board decision and the Community Directorate local board work programme 2025/2026.
- The project team will continue to engage with the community and stakeholders throughout the implementation process.



Item 5

Attachment A



Thank you
Ngā mihi



Maungakiekie-Tāmaki
Local Board
 Auckland Council

The Youth4Sure Story
Tuesday 2nd February 2025

FunDay

WAYFYNDERS

For Youth.
By Youth.



www.wayfynders.nz



www.projectrise.nz



