

**Date:** Wednesday 5 February 2025  
**Time:** 10:00am  
**Meeting Room:** Kumeū Meeting Room, 296 Main Road, Kumeū

---

## Rodney Local Board Workshop

# OPEN MINUTE ITEM ATTACHMENTS

---

ITEM	TABLE OF CONTENTS	PAGE
A.	PCF monthly update	3
B.	Muriwai memorial project	35
C.	Warkworth Library - building structural renewals	39
D.	Draft play plan memo	43
E.	Rodney Play Plan 2024 (draft)	47
F.	Draft play plan presentation	113
G.	Northwest Country presentation	119
H.	One Mahurangi Presentation	135
I.	Hibiscus Coast Wastewater Servicing Challenges Presentation	147
J.	Hibiscus Coast wastewater capacity constraints	159

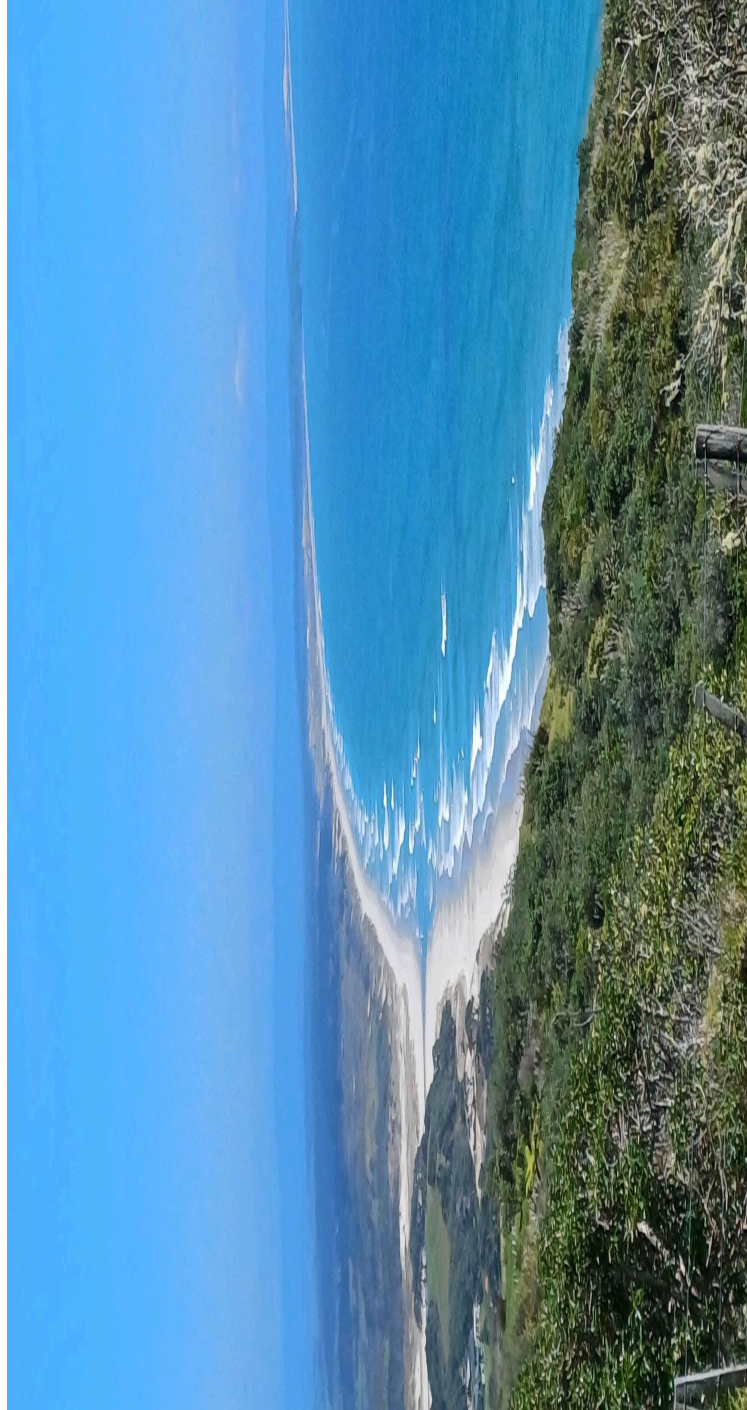




RODNEY

Local Board Report – November 2024

GREAT PLACE  
AUCKLANDERS LOVE  
PARKS & COMMUNITY FACILITIES



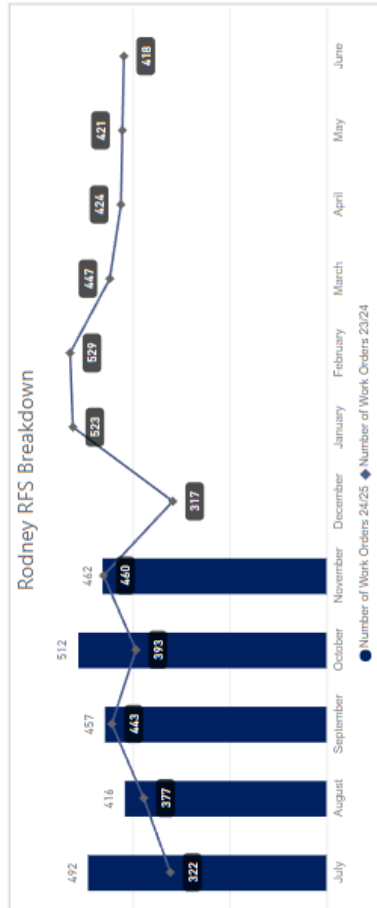
Attachment A

Item 5

**PERFORMANCE REPORTING**  
**Audit Results and Request for Service**  
**GREAT PLACE AUCKLANDERS LOVE**  
**PARKS & COMMUNITY FACILITIES**

**Request for Service Received**

raised for FY24/25 YTD **2339**



includes RFS that have resulted in a Work Order for action.

breakdown of Top 5 Request for Service for November

Service Name	Number of Work Orders 24/25
Structure Maintenance and Repairs	74
Plumbing Maintenance Service	69
Carpentry Maintenance Service	49
Electrical Maintenance Service	34
Furniture and Fixtures Maint and Repairs	32
Maintenance - General	32

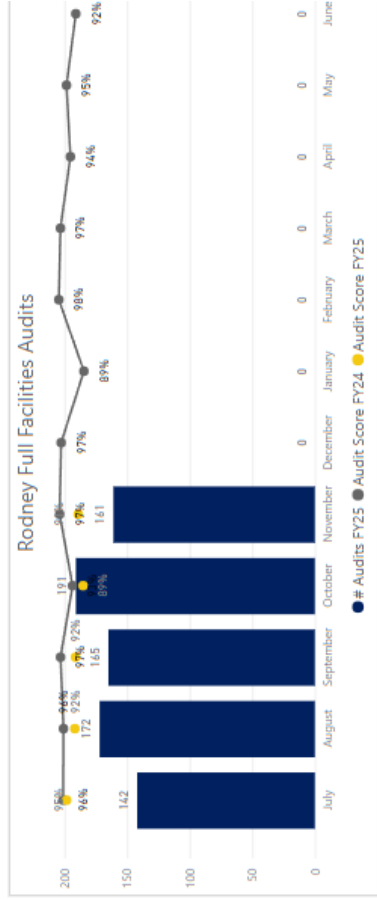
Breakdown of Top 5 Request for Service FY24/25 YTD

Service Name	Number of Work Orders 24/25
Structure Maintenance and Repairs	340
Plumbing Maintenance Service	323
Carpentry Maintenance Service	216
Electrical Maintenance Service	188
Furniture and Fixtures Maint and Repairs	159

**COMMENTARY**

The number of requests for service has reduced from last month and is similar to the same period last year. The majority of requests for service relate to building work. We currently have Green by Nature in formal performance management for building work with improvement plans received and actions to implement this service around underway.

**Audit Results**



The highlights and lowlights of audits undertaken FY24/25 YTD are:

Highlights YTD	Lowlights YTD
Building Maintenance	Gardens & Plants
Litter	Hard Surfaces & Paths
Sportsfields	Tracks (incl. Structures)
Streetscapes Clean	
Water Feature	

**COMMENTARY**

The performance result for the month has increased into the mid 90% range. While the result is pleasing to see Council is still working with Green by Nature to action improvement plans to address specific areas of concern.



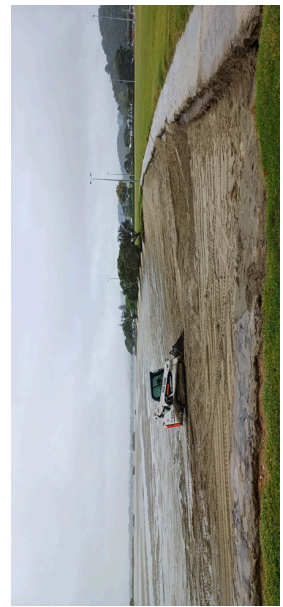
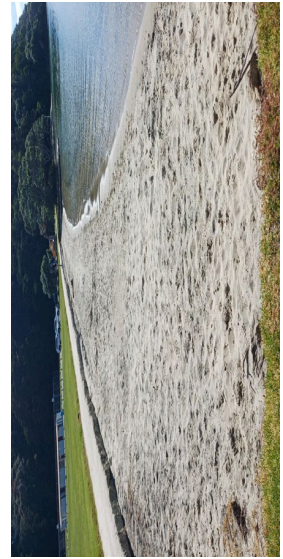
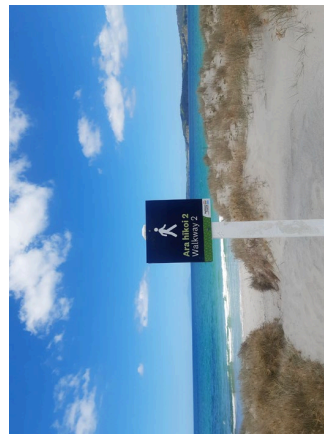
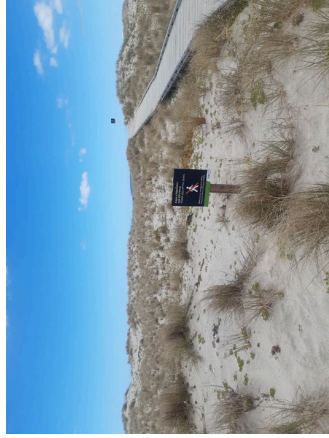
# MAINTENANCE DELIVERY OF DATA

## Corrective, preventive, risk-based and condition-based maintenance

GREAT PLACE  
AUCKLANDERS LOVE  
PARKS & COMMUNITY FACILITIES

### General Maintenance

- Rural roadside litter.** Litter bag count for the month is
- Rural roadside mowing.** Rural roadside spraying contractor has sourced additional resource and has assured us that all will be in control by months end.
- Gardens. Cleaning.** Some improvement required otherwise no significant issues.
- Reserve litter.** On target.
- Omaha beach.** New signs have been installed along walkway 2 and sand drift fences installed where major scarps have appeared.
- Whangateau Domain beach.** Sand has been topped up at the beach.



Attachment A

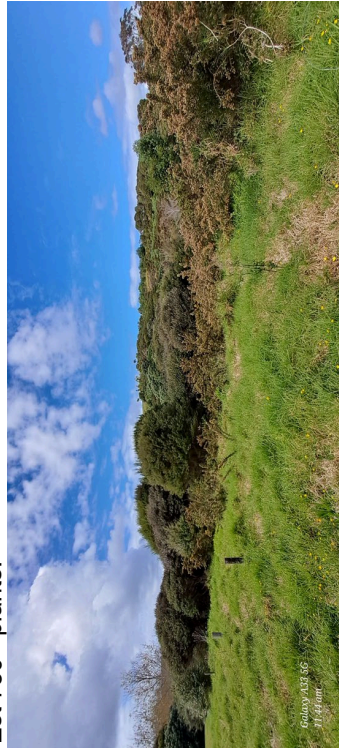
Item 5

COMMUNITY TEAM MANAGER OF DATE  
GREAT PLACE  
AUCKLANDERS LOVE  
PARKS & COMMUNITY FACILITIES

2025 Community Planting Planning is Underway

much of November has been spent scoping sites with community groups and volunteers for potential restoration planting. The process involves regular communication with several internal and external stakeholders, nurseries, contractors, mana whenua and council departments.

Below: Omaha Quarry Reserve, gorse & kikuyu infested site  
Est 750+ plants.



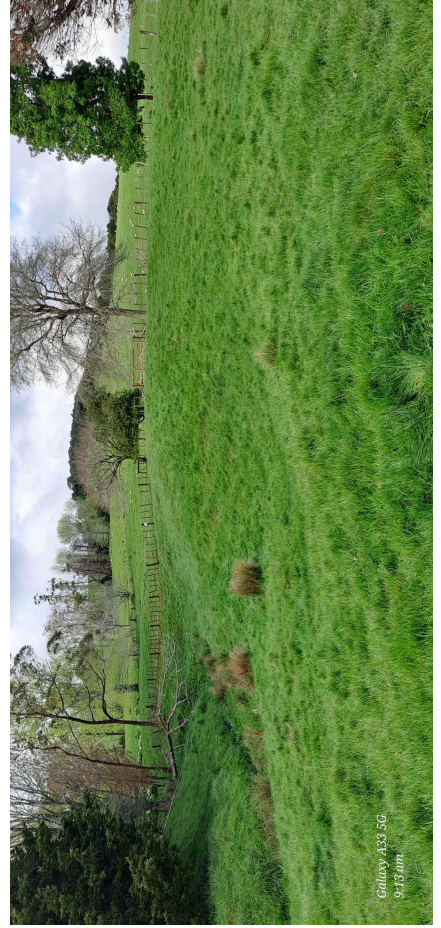
Below: To compliment the new footbridge in South Wellsford volunteers are keen to plant this reserve, with Kiwirail support: Est 200 plants.



Below: Friends of Green Road wish to continue restoration at the Sunnyside Road end of the Reserve. Est 2000 plants.



Below: Hoteo North Domain planting with Healthy Waters support and the Hall and Ag Society. Est 1790 plants.





## ANDBUILDING OF DATE The cultivation of trees and shrubs

GREAT PLACE  
AUCKLANDERS LOVE  
PARKS & COMMUNITY FACILITIES

### Scheduled and Notable Work

#### Street pruning

- Point Wells
- Warkworth

#### Park pruning

- Sandspit
- Riverhead
- Snells Beach

#### Planting

- Complete

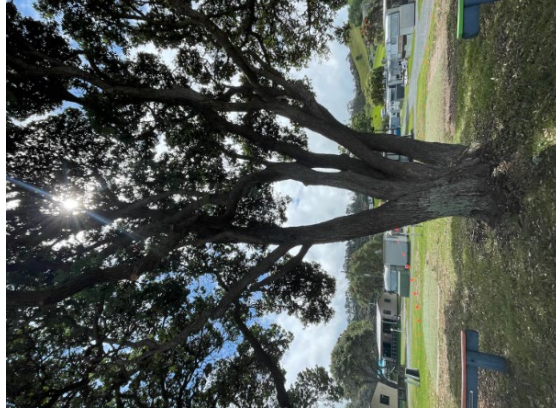
#### Noteworthy work

- Nothing of note

### Scheduled work at Martins Bay Campground

Recently Martins Bay Campground has been receiving some work and has not quite finished yet. This location has a great beach front and many nice well established pohutukawas.

Many locations this month have received attention with a lot more parks work taking priority. Most locations now have firm ground.





## ECOLOGICAL UPDATE

### Plants, animals and their environment

GREAT PLACE  
AUCKLANDERS LOVE  
PARKS & COMMUNITY FACILITIES

#### Rodney-based Supplier, Scrub Ecology, starts work

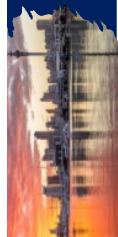
High value ecological areas in the Local Parks network are now being managed by Rodney and Jane Straka from Wainui-based company, Scrub Ecology.

Scrub was founded in 2004 and the nursery and yard are based on the family farm. The company's extensive portfolio of eco-sourced planting projects means they are able to maintain a field-fit crew with a diverse range of skills.

The nature of the company's contracts also means ecological restoration work on local parks can be compressed into the summer months. This period of the year is the prime ecological maintenance period as weather is more reliable for control work and lower rates of herbicides can be used.







## ECOLOGICAL UPDATE Plants, animals and their environment

GREAT PLACE  
AUCKLANDERS LOVE  
PARKS & COMMUNITY FACILITIES

### Horseshoe Bay Reserve

Climbing asparagus was prolific in this reserve and was the main focus of control efforts.

Stinger was also common.

Other target species noted (and controlled) included noth plant, acmena, tree privet, banana passionfruit and woolly nightshade.

The density of pest plants in this reserve meant some additional hours were scheduled, although some areas were still not able to be covered. Steep / cliff areas were also not covered.

Tracklogs (shown in blue, map to right) show where each team member worked.



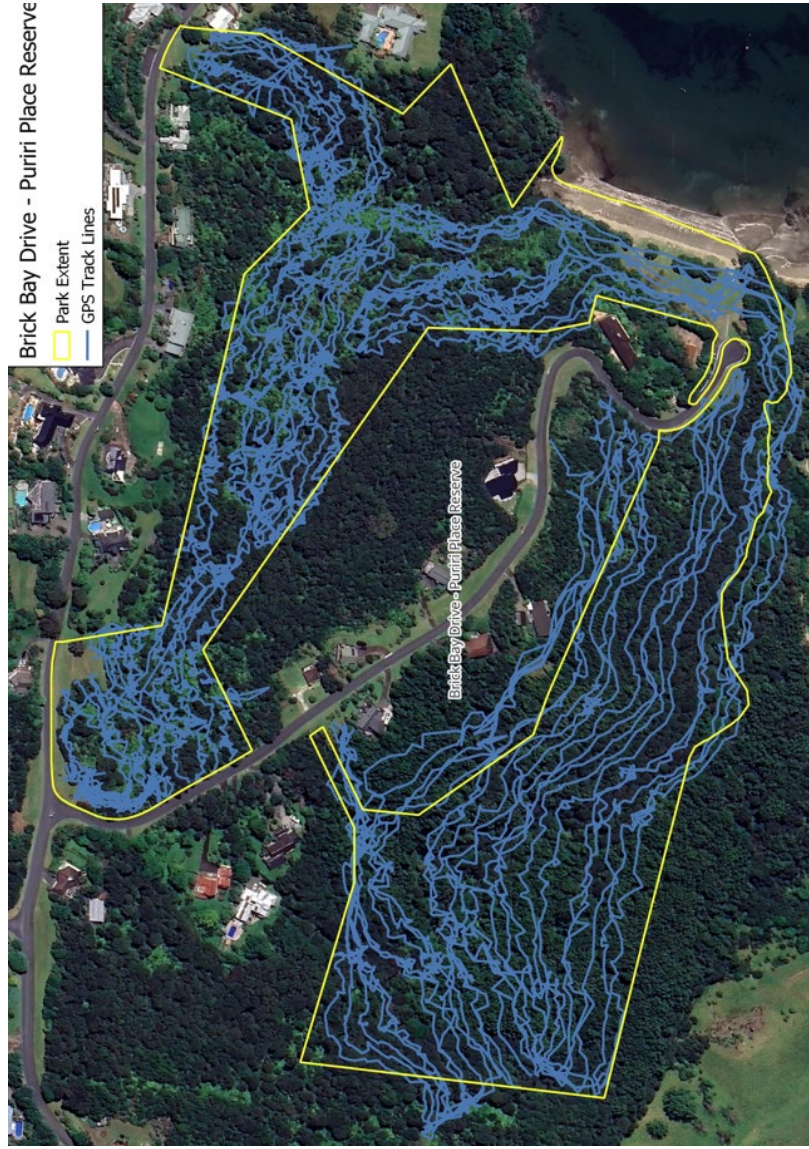


# ECOLOGICAL DATA

Plants, animals and their environment

GREAT PLACE  
AUCKLANDERS LOVE  
PARKS & COMMUNITY FACILITIES

## Brick Bay Drive & Pūriri Place Reserves



Climbing asparagus and ginger were also  
lense in some areas of these reserves.  
Voolly nightshade was also controlled.



## ECOLOGICAL UPDATE

Plants, animals and their environment

GREAT PLACE  
AUCKLANDERS LOVE  
PARKS & COMMUNITY FACILITIES

### Wasp & bee call outs

**Wasp and bee swarm call outs have increased** with warmer weather.

This very large bee swarm was noted in Glen Eden last week.

Wasp nests are controlled.

Unfortunately, we are not able to control wasps unless the nest can be located. (Vespex regrettably does not work as well in Auckland as it does in South Island beech forests. This may be due to the increased diversity of species, and therefore food options, in more northern regions.)

Bee swarms / nests are relocated where possible thanks to local apiarists.





# NOTIFICATIONS

## Community leasing and land-owner approvals

GREAT PLAGE  
AUCKLANDERS LOVE  
PARKS & COMMUNITY FACILITIES

### Community Leasing

Community lease movements

No update this month

### Land Advisory

Land-owner applications received are assessed by Land Use Advisory and reviewed by Community Facilities staff. The board will be contacted for feedback in due course.

One (1) application was <u>received and allocated</u> to staff for review during November 2024:
<ul style="list-style-type: none"> <li>A neighboring resident has applied for permission to access Point Wells Esplanade Reserve, in order to remove an unconsented seawall.</li> </ul>
One (1) application for landowner approval was <u>approved</u> by staff during November 2024:
<ul style="list-style-type: none"> <li>The Matakana Community Group received permission to establish a pump track at Matakana Diamond Jubilee Park.</li> </ul>





















































































































































































































































































































































