

**Date:** Wednesday 5 February 2025  
**Time:** 10:30 am  
**Meeting Room:** Whau Local Board Office  
**Venue:** 31 Totara Avenue  
New Lynn

---

## Whau Local Board Open Workshop

### NOTES ATTACHMENTS

---

<b>ITEM</b>	<b>TABLE OF CONTENTS</b>	<b>PAGE</b>
<b>5</b>	<b>Local Board Workshop</b>	
A.	Auckland Transport Bulletin February 2025	3
B.	Design Layout - South Lynn Road - Side Island Option with SLOW	43
C.	Presentation - Rosebank Rd Bus Lane (SVL)	45
D.	Presentation - Crown Lynn update	55
E.	Presentation - Lawson Park Toilet provision	69
F.	Presentation - Activation Programme 2025-2026	79
G.	Activation Schedule - Manurewa Local Board 24-25	95
H.	Memo - Out and About Activation Programme	101
I.	Presentation - Arts Programme 2025-2026	105



# WEST HUB BULLETIN – WHAU LOCAL BOARD

## February 2025



### Introducing the Bulletin

The Bulletin is a monthly update to keep you informed about what happened in your area last month and about plans in the future.

### Local Impacts, Issues, Projects, and Local Board Views

It includes information about current projects being undertaken in the area, a list of projects that are being consulted about and other interesting information about the area.

#### Requested outcomes:

It is requested that the Whau Local Board take note of this update.

### Local Board Issues Being Investigated

The Local board have requested the following issues be investigated. These are still under investigation:

SMEs will talk to these items in my update workshop this month:

- South Lynn mitigations were implemented by way of amending the ramp and toe of the speed table, however, there has been further follow up on the matter by residents. Project Manager will give an update on this and possibly share some drawings. *Item to take 10-15 minutes.*
- Rosebank Road special vehicle lanes project update and next steps. SMEs to talk to this item. *Item to take 10-15 minutes. 2/4 3/4*

All other items (*potential discussion in remaining time*):

- West Lynn Rd re-seal completed. We did things differently this time, using finer three-quarter chip as opposed to the two-quarter chip being used previously. This is expected to hold up better going forward given the gradient at this location.
- Totara Ave lighting, brighter luminaries are not expected to have the desired effect, streetlight team to potentially approach Local Board mid-late 2025 around a potential lighting re-design, some funding contribution may be needed to progress this.
- Totara Ave pavement reinstatement by Vector not like-for-like. A non-conformance notice was issued to Omexom (Vector's power contractor). They have requested we provide guidance on the exact composition on the pavement so they can get it right, we have supplied this information, and the remediation is expected imminently.
- Manawa Wetland storm damage. A comprehensive survey was undertaken on the way forward. Implementation of repair work is likely to be implemented under the AT structure renewal budget. Timelines to be provided to Local Board once available.

- Rizal reserve roading is Auckland Council owned roading. Working with parking design on potentially resolving the kerb-cut or adding some BYLs are resolving them under TCC so infringements can be issued. Noted boards request to potentially door-knock but may be better to address properly in case residents move on or it is guests, park users or such end up also doing it.
- Glen Avon primary school side-street (Miranda St) left turn into zebra crossing. Traffic engineer have investigated and supplied a non-action response which I will pass onto the Local Board.
- Stock St paper road. Site visit was completed. AT to re-issue notice to neighbouring properties to remove their items. Next steps TBC on outcome, potential update by next bulletin. Boards thinking around the site has been shared with relevant teams to get a better understanding of what is needed and why.
- Blockhouse Bay bench seats. 4x new seats on order, expected to take 6 weeks counting from mid-January. Remaining seats to be cleaned, restrained and some cases bases to be resprayed with anti-rust and paint. Blue pedestrian fencing near intersection also to be repainted.
- Iqra School – wheel stops have been installed on parking bays to address some of the parking issues highlighted. Before and after pictures below:

Before:



After:



## Status of current LBTCF raised deflection projects

- **Rosebank Road Signalized Crossing** outside school –  
It has been suggested that there is no need for traffic modelling despite previous indication that we would. I have asked for explanation to pass on to the Local Board. ATOC (Auckland Traffic Operations Centre) who made this call, are preparing this explanation.
- **St Georges Road Safety Improvements** near Jireh School –  
No change since last report. Concept design is completed, 75mm high raised zebra crossing is proposed. AT plan to consult School for their early inputs. SLT (Senior Leadership Team) review underway with external public consultation likely to start in February 2025.
- **Godley Road reactive Safety Work** – Install Road markings – SLOW and Diamond. Install new tactiles for Approx 15k. Completed.

Warning Tactile Pavers:



SLOW markings on red resin:



## Road Maintenance in Your Local Board Area

Below is list of maintenance works that will be carried out in your local board area. Please note that the start dates of these works can change due to weather conditions or other unforeseen circumstances.

Road maintenance	Elm Street (full road closure, 1 Elm Street to Rosebank Road)	Avondale	Night shift only	29/01/2025	31/01/2025	Between 8pm and 5am
Road maintenance	Rosebank Road (full road closure, Blockhouse Bay Road to Riversdale Road)	Avondale	Night shift only	27/01/2025	29/01/2025	Between 8pm and 5am
Road maintenance	Roberton Road (full road closure, 11 Roberton Road to Rosebank Road)	Avondale	Night shift only	27/01/2025	29/01/2025	Between 8pm and 5am
Road maintenance	Layard Street (full road closure, 1 Layard Street to Rosebank Road)	Avondale	Night shift only	27/01/2025	29/01/2025	Between 8pm and 5am
Road maintenance	Riversdale Road (full road closure, 2 Riversdale Road to Rosebank Road)	Avondale	Night shift only	2/02/2025	4/02/2025	Between 8pm and 5am
Road maintenance	Aspen Street (full road closure, 1 Aspen Street to Rosebank Road)	Avondale	Night shift only	2/02/2025	4/02/2025	Between 8pm and 5am
Road maintenance	Victor Street (full road closure, 65 Victor Street to Rosebank Road)	Avondale	Night shift only	2/02/2025	4/02/2025	Between 8pm and 5am
Road maintenance	Canal Road (full road closure, 1 Canal Road to Rosebank Road)	Avondale	Night shift only	2/02/2025	4/02/2025	Between 8pm and 5am
Repairs to structure	Huia Road (full road closure, Woodland Park Road to Atkinson Road)	New Lynn	Continuous works	6/01/2025	11/02/2025	24-hour closure
Construction vehicle access	Mcnaughton Way (full road closure, carpark entry/exit to carpark entry/exit)	New Lynn	Day shift only	31/01/2025	31/01/2025	Between 7am and 6pm
Music In The Parks - Blockhouse Bay	Endeavour Street (full road closure, Gilfilian Street to end of Endeavour Street)	Blockhouse Bay	Full road closure	31/01/2025	31/01/2025	Between 2pm and 9:30pm



## Auckland Transport’s Traffic Control Committee (TCC) report

Decisions of the TCC during the last month affecting the Whau Local Board area are listed below:

Board	Location	Suburb	Description	Resolution ID	Nature of Restriction	Committee Decision
Whau	Maioiro Street / New Windsor Road / Richardson Road / Rosamund Avenue / Roseville Street / Cordelia Place	New Windsor	Permanent Traffic and Parking changes	18921	Dynamic Lane / Bus Lane / Traffic Signal Control / Road Hump / P30 Parking / Traffic Island / Flush Median / Shoulder Marking / No Passing / Bus Stop / Bus Shelter / Shared Path / Footpath / Traffic Signal Control / No Right Turn / Pedestrian Crossing / Give-Way To Cyclists And Pedestrians / No Stopping At All Times / Stop Control / Give-Way Control / Removal Of Flush Median / Removal Of Bus Shelter / Removal Of Traffic Island / Lanes / No Stopping Off The Roadway / “No Right Turn” Warning Sign	Carried
Whau	Endeavour Street	Blockhouse Bay	Temporary Traffic and Parking changes (Event) Music in the Park - 31/1/25	SE002162	Temporary Traffic And Parking Restriction Changes	Carried

## ROAD SAFETY INCIDENTS IN THE WHAU LOCAL BOARD AREA

The below table give the local board member information about the road safety incidents that have occurred recently for your information.

**DSI list supplied via email as not to be shared to public.**

## Workshops held with the Whau Local Board

Auckland Transport have held the following workshops with the Local Board recently:

- Auckland Transport Update Report

Upcoming:

- Local Board Capital Fund increase and potential projects - Wed 12<sup>th</sup> Feb 2025
- Great North and New North Corridor Plans - TBC

## Local Board Consultation for Proposed Improvements

Consultation documents for the following proposals have been provided to the Whau Local Board for its feedback and are summarised below for information purposes only.

After consultation, Auckland Transport considers the feedback received and determines whether to proceed further with the proposal as consulted on or proceed with an amended proposal if changes are considered necessary:

No projects under public consultation at time of this report.

## Consultation – Current Status – as of October 2024

Address	Proposal	Current Status
48A, 50 and 55A Rosebank Road	Improve bus stop infrastructure	Completed design phase. Construction has not started. Pending Rosebank SVL project.
73 Bollard Avenue	New bus shelter	Completed design phase. Construction has not started. Updates sought again.
80 Bollard Avenue	Upgrade Bus stop	Completed design phase. Construction has not started. Updates sought again.
Great North Road & Hepburn Road	Intersection upgrade	I've physically observed this project be constructed. Following up what happened around this one as don't recall any comms.
Maioro Dynamic Lanes	Dynamic Special Vehicle Lanes	Update sent out in Jan 2025 that some of the construction works will begin from Feb 2025.
Rosebank crossing	New crossing near school	See LBTCF section earlier in the bulletin.



Hepburn Rd crossing	New location of crossing / other improvements	Jan-Feb 2025 construction per 11 Nov 2024 comms to Local Board.
Phelps PI and Hepburn Rd roundabout / crossings	Roundabout and uncontrolled crossing in WHLB, raised table crossing in HMLB.	Internal analysis on next steps.
Kinross bus layover	Potential new layover and bus stops / potential extended routes along Kinross	Consult was open to to Dec 2024. Result TBC.

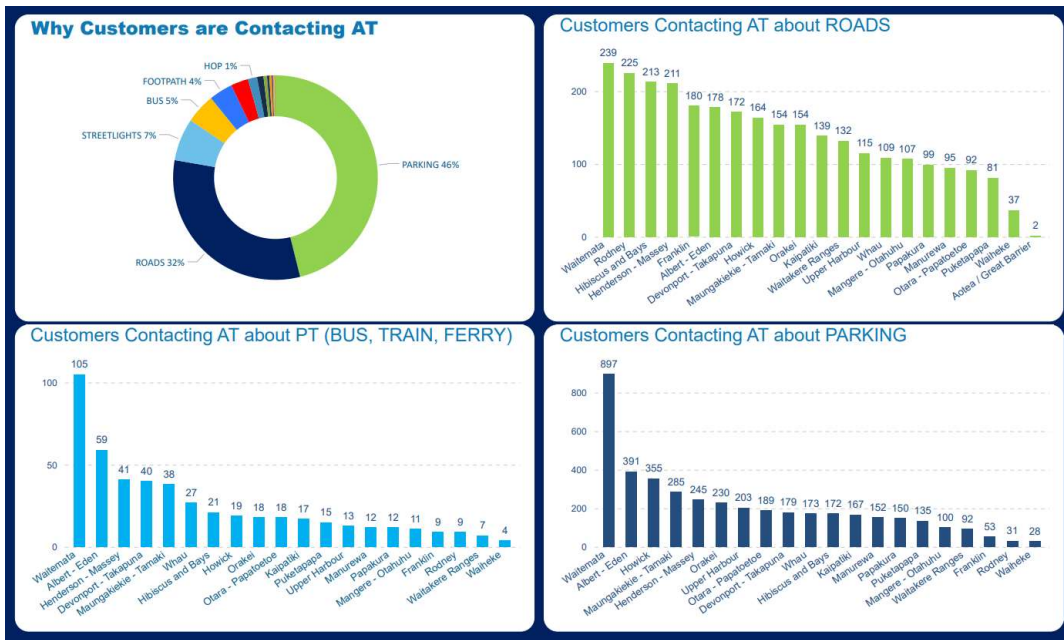
As requested by the Chairperson to have a list of all consultation that comes to the Local board their status. This list will be a moving list where projects will drop off once completed.

## Why Aucklanders contact Auckland Transport

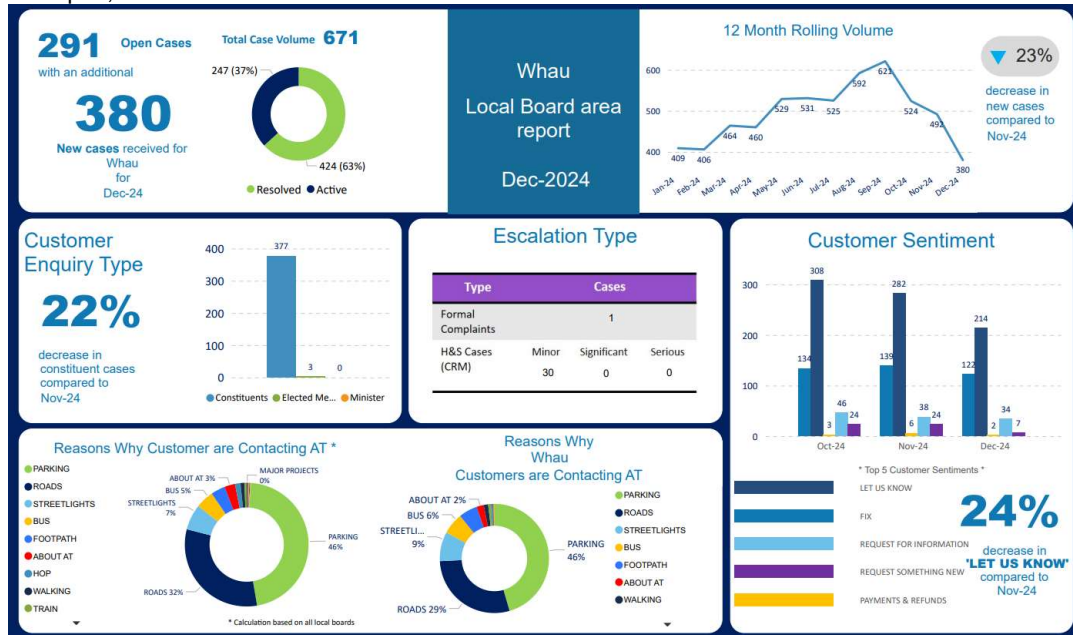
Below is a summary of the reasons why people are contacting Auckland Transport’s customer service teams across all of Auckland. The data is summarised by issue and by how major issues like parking effect all of Auckland’s local boards.

### Local customer activity

- This section tells you what people are contacting Auckland Transport about this month in this area. It is to help decision-makers see trends and to inform their planning.



In December 2024, 380 Whau residents (excluding 291 existing cases) contacted Auckland Transport, and their concerns are summarised below:



January 2025 statistics should be available in the next report.

## Regional Updates – AT Board Digest

The Auckland Transport (AT) Board held its December meeting on Wednesday 18 December:

### Statements from Members of the Public

**64 bus route and impact on residents of Walter Road** – Isabell Moller, Natasha Toswill presented to the Board.

**Meola/Garnet Road roundabout and Mercury Lane petition** – Gael Baldock and Muy Chhour presented to the Board.

**Cycling community’s concern on lack of investment in cycleways** – Bike Auckland’s Karen Hormann presented to the Board.

### Chief Executive Update & Standing Items

**Chief Executive Open Business Report** The Board heard from Chief Executive Dean Kimpton who highlighted the significant increase in local board satisfaction, tracking at 71% surveyed as either satisfied or highly satisfied. The result is an increase of 30% from the last survey, well above the target of 56%.

Mr Kimpton also noted:

- The successful roll-out of contactless payments, with an uptake of 460,000 trips using contactless payments to date.
- AT's pothole promise delivering 785 potholes fixed with 95% of these completed within response time targets.
- Strong employee engagement as highlighted through a recent survey.
- The body camera trials underway for staff and the ongoing installation of bus driver safety screens.

**[Health, Safety and Wellbeing & Transport Safety Update](#)** The Board heard from Director, People and Performance, Karen Duffy, who highlighted that incidents of violence, threats and aggression against staff are continuing to increase.

The Board heard from Group Manager Transport Safety Teresa Burnett who highlighted that deaths and serious injuries continue to decline. The New Zealand Police is delivering to its targets for breath testing and speed enforcement.

**[City Rail Link and Rail Update](#)** The Board heard from Director, Infrastructure and Place, Murray Burt, who highlighted:

- There is progress on the three rail stations being delivered by KiwiRail – Drury, Pukekohe and Middlemore.
- There have been some delays to the Link Alliance programme of work in preparation for the City Rail Link; with the first test train now postponed to early in the new year.

#### **Items for approval**

**[Draft Room to Move in the City Centre Plan](#)** The Board approved the proposal for public engagement on Room to Move in the City Centre Plan, emphasising the importance of Eke Panuku's involvement in the process.

**[Board Committees Update – Finance and Assurance Committee](#)** The Board approved the reclassification of AT's Debt Management Policy from Tier 1 to Tier 2.

## **Regional Updates – Media coverage of regional or Whau significance:**

**Fare Changes:** We shared across our social channels that starting Sunday 2 February 2025, [changes will be made to public transport fares](#), fare zones, and discounts. This will be followed by a wider marketing campaign launching next week.

**1 Million Trips/Contactless Payments:** On Monday at precisely 3.56pm, an unsuspecting passenger made history when they hopped off a route 27H bus by Grafton Bridge - marking the [millionth journey](#) made using contactless payments in Auckland since new ways to pay were introduced in November last year. We published the news widely across our channels alongside the media release.

**Henderson Station Upgrades:** We shared a big [update from KiwiRail](#) on the work they've undertaken at Henderson Station over the Christmas and new year rail network closure. Once completed trains will run every 8 minutes at peak times and the journey from Henderson to the new Te Waihorotiu Station will take just 35 minutes, saving about 24 minutes.

**Summer Road Reno:** Auckland's Summer Road Reno is underway, with plans to resurface 410km of roads in Tāmaki Makaurau by the end of June 2025. This week's focus is on improving the safety and quality of the road at Riverhead Bridge along Coatesville-Riverhead Highway. [We interviewed the team to get an update on how work is progressing.](#)

**Rail disruption:** We were asked about delays and cancellations to some rail services early this morning. This was caused by an overhead power issue which was resolved quickly by KiwiRail. We co-ordinated with KiwiRail and each provided a response.

- [Auckland commuters face more train cancellations after month-long network closure | RNZ News](#)

**Stuck level crossing:** We responded to a query about a bus which got stuck at a level crossing. Query also went to KiwiRail, who is responsible for level crossings. - [West Auckland rail replacement bus stuck at level crossing during rush hour, despite train freeze - NZ Herald](#)

**Rail shutdown:** This story featured yesterday featuring KiwiRail about progress on the current rail works: [Auckland rail woes: 'Long periods of closure will not be required in the future' | RNZ News](#)

**Rude location marker in the AT Journey Planner:** Media got in touch asking about a lewd location marker that was appearing in the Journey Planner.

- We examined the issue and confirmed that the inappropriate label had been mischievously added to our third party map provider's database as part of a juvenile prank.
- We are following up on the issue with the map data supplier, Mapbox, seeking assurances about their processes for preventing abuse from user supplied content.
- You can read the Stuff story here: [Rude phrase appears on Auckland Transport's journey planner website | Stuff](#)

**AT customer service:** The customer service team got an awesome shoutout by the NZ Herald over the break – [The 20 best things about Auckland life in 2024 – Steve Braunias - NZ Herald](#)

**Coverage over the Christmas / New Years break:**

- [Auckland's Rosedale bus station delayed till 2027 | RNZ News](#)
- [The one that got away](#)
- [Spot the sign: Driver anger over tens of thousands of Queen St tickets](#)
- [NewstalkZB Bulletins](#)
- [Why are Auckland trains shut down over the next month?](#)
- [Auckland's road and public transport shutdowns over summer - all you need to know - NZ Herald](#)
- [Man arrested after bus driver assaulted on North Shore | RNZ News](#)
- [Auckland Transport bus driver assaulted by passenger on North Shore - NZ Herald](#)

**Road Safety:** Auckland Transport was awarded a [Prince Michael International Road Safety Award](#) in London for outstanding achievements in road safety. We thanked all our partners and communities who enabled us to deliver our work. We celebrated this huge achievement on LinkedIn.

**AT/NZ Police:** This year the NZ Police have carried out over a [million breath tests in Auckland](#) so far!

**Fareshare:** We shared that AA Insurance NZ has signed up for [a six-month trial of the Fareshare programme](#), subsidising employee public transport by 50% to support their team to travel into the office and help reduce emissions. The team hosted activation sessions at AA Insurance's Auckland office where they helped employees sign up for the subsidy and the Travelwise team got to chat with them about how they move and share tips and journey planning advice.

**Pothole Promise:** We let Aucklanders know that we're keeping our promise to fill [95% of potholes](#) on our busiest main roads by filling 785 potholes in just 5 weeks! We're encouraging people to keep reporting them, so we can keep their city moving.

## Campaigns of regional or Whau significance

### BNZ Auckland Lantern Festival + Happy Year of the Snake

<p><b>Purpose</b> <i>Summarise reason for the campaign.</i></p>	<p>Celebrating the Year of the Snake, the BNZ Auckland Lantern Festival will be held at Manukau Sports Bowl over 4 days from Thursday 13 to Sunday 16 February 2025. The event is expected to attract over 150,000 attendees throughout the four days.</p> <p>The <a href="#">event is free</a> however tickets are required and attendees can use their event ticket to hop on a free and frequent shuttle bus that runs between Manukau Train Station, Westfield Manukau and Manukau Sports Bowl.</p>
<p><b>What's happening?</b> <i>Description of campaign + background</i></p>	<p>A marketing campaign is being run to let Aucklanders know what public transport options are available to them and to encourage attendees to take public transport and the free shuttle bus to Manukau Sports Bowl for the BNZ Auckland Lantern Festival. Through our radio and social channels they will be directed to AT's <a href="#">event page</a> to find out more.</p> <p>As part of our big brand moment, AT will be launching a fully wrapped bus on Route 70, celebrating the Year of the Snake and wishing Aucklanders, particularly the Chinese community 新年快乐 (xin nian kuai le – Happy New Year in Chinese).</p> <p>The number '8' is considered highly auspicious, symbolising luck and prosperity. To embrace this theme, we will be installing a floor decal at bus stop 8888 on Williamson Ave, declaring it Auckland's luckiest bus stop.</p> <p>Chinese Herald will be doing a story telling piece working with some Chinese Speaking staff members at the Howick and Eastern depot to explore more on the bus wrap and their culture.</p>
<p><b>Key messages</b> <i>What are our key messages?</i></p>	<ul style="list-style-type: none"> <li>• There's a brighter way to get to lantern festival this year. Train or bus to Manukau Station. Then take a free shuttle – running between the station, Westfield and the festival.</li> <li>• Happy Lantern Festival!</li> <li>• For all your travel options head to <a href="http://AT.govt.nz/events">AT.govt.nz/events</a></li> <li>• Happy Year of the Snake</li> <li>• 新年快乐 (xin nian kuai le – Happy New Year in Chinese)</li> </ul>
<p><b>Target Audiences</b> <i>Who do we primarily want to reach?</i></p>	<ul style="list-style-type: none"> <li>• Aucklanders heading to BNZ Auckland Lantern Festival</li> <li>• Aucklanders with young kids</li> <li>• Asian communities that celebrate Lunar New Year</li> </ul>
<p><b>When is it in market?</b> <i>Dates when the campaign is live in market</i></p>	<ul style="list-style-type: none"> <li>• Happy Year of the Snake: 29 January – 23 February</li> <li>• BNZ Auckland Lantern Festival: 3 February – 16 February</li> </ul>
<p><b>Media Channels</b> <i>Creative channels the campaign will be shown through</i></p>	<p>Advertising:</p> <ul style="list-style-type: none"> <li>• Meta (Facebook &amp; Instagram)</li> <li>• Radio 15" sec</li> <li>• AI (Newmarket Atrium, Britomart Towers, Urban Network, QBE Queen St, Fanshawe Blades)</li> <li>• Full double decker bus wrap on route 70</li> <li>• Floor decal at Auckland's luckiest bus stop 8888 (Williamson Ave)</li> </ul>
<p><b>Creative</b> <i>Incl. images.</i></p>	<p>BNZ Auckland Lantern Festival creatives: <b>Meta (Facebook + Instagram)</b></p>



**Radio 15"**

There's a brighter way to get to the Lantern Festival this year. Train or bus to Manukau Station, then hop on a free shuttle bus to Manukau Sports Bowl. Just show your Festival ticket. Happy Lantern Festival!

To find out more, search: 'Auckland Transport: events'.

**Radio 15" Chinese script**

TBA

**Happy Year of the Snake creatives:**

Double decker wrapped bus

Item 5

Attachment A





Item 5

Attachment A

**Future Rail Tāmaki Makaurau (VES) promotion**

<p><b>Purpose</b> <i>Summarise reason for the campaign.</i></p>	<p>There is a lot of work in progress to prepare Auckland's rail network for operation of the City Rail Link in 2026. Future Rail Tāmaki Makaurau is a special interactive website that provides a wealth of information on CRL and the other projects affecting the rail network. In February 2025 we will start a promotion to encourage people to go to the website, to find out how CRL will transform the way Aucklanders move around the city.</p>
<p><b>What's happening?</b> <i>Description of campaign + background</i></p>	<p>Campaign to promote visits to Future Rail Tāmaki Makaurau interactive website. The campaign uses images from the Rail Story campaign to build excitement and anticipation towards the launch of the City Rail Link. A QR code links directly to the website <a href="https://futurerailauckland.govt.nz">https://futurerailauckland.govt.nz</a></p>
<p><b>Key messages</b> <i>What are our key messages?</i></p>	<p>The City Rail Link will:</p> <ul style="list-style-type: none"> <li>• Bring the South and City closer</li> <li>• Provide better connections</li> <li>• Provide more trains more often from 2026</li> <li>• Provide new World-class underground stations</li> <li>• Make getting around the city faster and easier.</li> </ul>
<p><b>Target Audiences</b> <i>Who do we primarily want to reach?</i></p>	<p>All Aucklanders, particularly those who currently don't appreciate the benefits of the City Rail Link.</p>
<p><b>When is it in market?</b> <i>Dates when the campaign is live in market</i></p>	<p>From 3<sup>rd</sup> February</p>
<p><b>Media Channels</b> <i>Creative channels the campaign will be shown through</i></p>	<ul style="list-style-type: none"> <li>• Posters on railway stations</li> <li>• Decals on trains</li> <li>• Social Media (Meta newsfeeds and stories)</li> <li>• Urban Network digital screens at stations</li> </ul>
<p><b>Creative</b> <i>Incl. images.</i></p>	<p>See over page</p>

Posters on railway stations – A2 size:

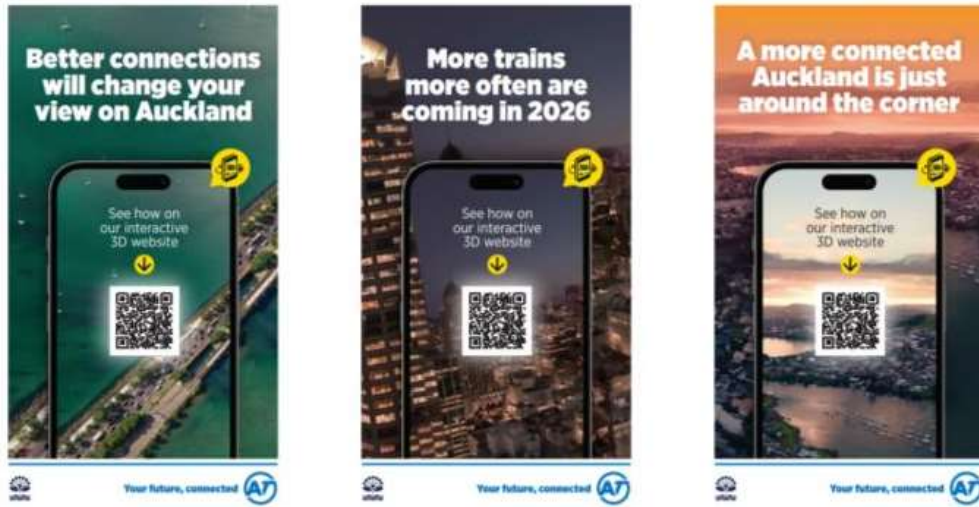


Item 5

Attachment A



Urban Network digital screens:



Social Media – Meta newsfeeds and stories:

Text: City Rail Link will better connect Aucklanders as they live, work and play. See what's going on to transform our rail system.

