

Date: 11 Feb 2025
Time: 3:00 pm
Meeting Room: Room 1, Level 26,
Venue: Te Wharau o Tāmaki - Auckland House,
135 Albert Street, Auckland

Te Komiti Hapori / Community Committee

OPEN MINUTE ITEM ATTACHMENTS



ITEM	TABLE OF CONTENTS	PAGE
7	Operational Homelessness Response Update	
A.	11 February 2025, Community Committee, Item 7 - Operational Homelessness Response Update, presentation	3
8	Allocation of targeted funding through the Sport and Recreation Facilities Investment Fund for financial year 2025/2026	
A.	11 February 2025, Community Committee, Item 8 - Allocation of targeted funding through the Sport and Recreation Facilities Investment Fund for financial year 2025/2026, presentation	11



Auckland Council regional homelessness update

Community Committee - 11 February 2025

Dickie Humphries – Head of Community Impact, Community Wellbeing
Ron Suyker – Regional Partnerships Lead (Homelessness), Community Wellbeing



Purpose

To provide the Community Committee with a bi-annual update on the regional homelessness work programme delivered by the Community Impact Unit.

Auckland homelessness - context

- **Homelessness:** “living situations where people are without shelter, in temporary accommodation, or living in uninhabitable housing and have no other options to acquire safe and secure housing” .
- Over 112,000 homeless people nationally (2023 census)
- Funding for homelessness activities in the Long-term Plan 2024-2024.

Homelessness sector	The council
Delivers front line responses	Works with community housing providers and stakeholders to facilitate regional pilots, trials and evaluations



Auckland Council's role in homelessness response

Auckland Council uses a sector partnering and relationship approach to enable a cross-council and cross-sectoral response to homelessness to:

- promote and support effective collaboration within the homelessness sector
- enable effective sector led initiatives to prevent and address homelessness
- provide funding support where gaps occur that could have an impact on addressing the needs of the homeless
- provide support through strategic grants and support for pilot initiatives and trials
- promote innovation and continuous improvement in practice through research, evaluation, and monitoring
- raise awareness, build empathy, and encourage local responses to local issues
- be an enabling council seeking to advance the cross-council homelessness action plan
- develop resources for council staff to support their engagement with people experiencing homelessness.



Current activity snapshot

17 active funding agreements

Active funding agreements being monitored and supported by the council

5 proposed initiatives being evaluated

Proposals currently being evaluated alongside sector partners

Manaaki Tangata – wellbeing space

Centrally located wellbeing space offering amenities and space to share kai, kōrero and connect to services

Kāhui Tū Kaha – boarding houses and lodges

Targeted funding initiative to prevent recurring homelessness arising from boarding houses and lodges



Opportunities



- Establish real time baseline of homelessness data
- Implement shared data system
- Track stocks and flows



- Establish reduction targets for the region
- Scope interventions to meet those target
- Track progress towards targets



- Data sharing protocols to inform service coordination across the region
- Alignment of resource deployment across the region



- Evaluate the social value of the investments
- Feed insights back into data cycle for service and investment improvement





Item 7



Attachment A



Sport and Recreation Facilities Investment Fund, targeted process, financial year 2025/2026

Community Committee – 11 February 2025

Nick Harris – Team Leader Sport and Recreation, Community Wellbeing



Purpose

To allocate funding through the Sport and Recreation Facilities Investment Fund's targeted process for financial year 2025/2026.

Introduction

- The Sport and Recreation Facilities Investment Fund (SRFIF) was established to support the development of sport and recreation facilities in the Auckland region.
- In November 2024, the *Sport and Recreation Facilities Investment Fund Framework FY2026 – FY2028* (the Framework) was adopted, introducing a targeted funding process that will run alongside the existing contestable process.
- There is \$23,869,965 available in the current funding round (targeted process and contestable process).







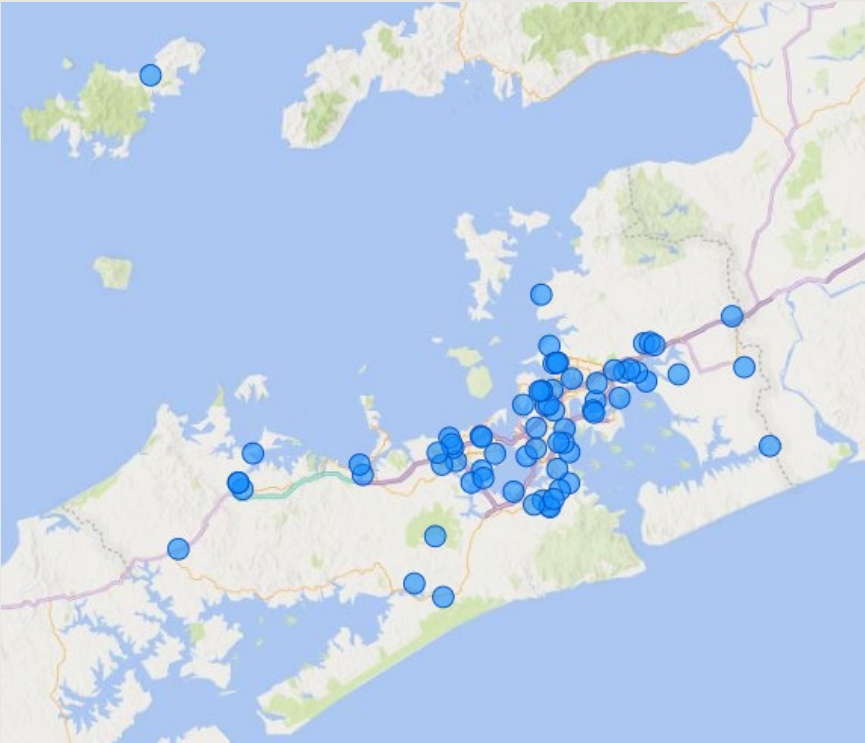
Entry pathways

- As outlined in the Framework, there are Entry Pathways for identifying projects to be included in the targeted process:
 - Entry Pathway 1: Previous SRFIF projects.
 - Entry Pathway 2: Projects identified by council that have not previously applied to the SRFIF and are engaged in partnerships of significance.
 - Entry Pathway 3: Proactively developed community partnership projects.
- Due to tight timeframes of the Framework being adopted and the funding allocation, only Entry Pathway 1 projects were able to be considered in this round.
- Work is ongoing with staff working to identify and develop projects for Entry Pathways 2 and 3. The draft approach for this work will be presented to a Community Committee workshop in April 2025.





Previous allocations



Since 2019, SRFIF has allocated:



- Over \$57,000,000 in grants
- 20 different local boards
- 79 individual projects



Choosing targeted projects

- Six candidates were invited to submit based on:
 - their alignment to SRFIF's priority criteria
 - their progress through the project lifecycle
 - current SRFIF funding available relative to the next necessary steps.





Assessment

- All projects were assessed by Sport and Recreation staff and an Independent Review Panel based on:
 - Justification to target
 - Capability/achievability
 - Project status
 - Funding status

Assessment

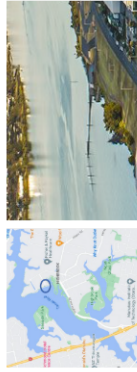
Project summaries are provided as attachments to the report

Highbrook Regional Watersports Centre Trust Highbrook Watersports Centre Clubhouse building

Summary

For construction of a watersports facility, up to \$2,200,000 or 60 per cent of total project costs, whichever is less.

Previous SRFF allocation	\$3,450,000
Recommended SRFF, targeted allocation	\$2,200,000
Total SRFF investment	\$5,650,000
Total project cost	\$9,400,000
Total SRFF contribution %	60%



Project information

Design and construction of a two-level clubhouse to provide a watersports venue for youth in the southern sub-region on the Tamaki River. The foundation stage ("table-top") was majority funded by Auckland Council in August 2024 (\$3.1M), and construction will start in Q1 2025.

The next stage will involve construction of the clubhouse building – commencing, if funding allows, immediately following completion of the table-top in Q3 2025. The cost of the clubhouse build will be circa \$6.7M. The trust is seeking approximately 90% funding from SRFF.

Sub-regional facility serving South Auckland catchment which will increase watersport capacity in the network and provide storage, training facilities and clubhouse for Rowing, Waka-Ama and Canoe sports.

Impact – participation

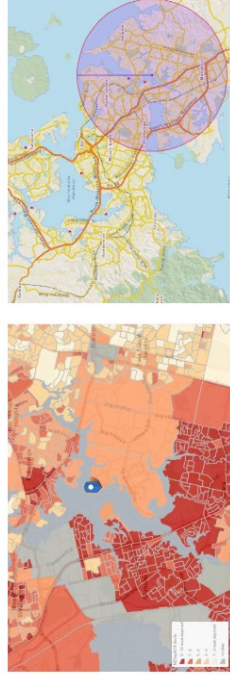
The creation of a new facility is expected to increase participation with both school-age rangatahi, adult, and masters athletes. Anecdotally existing clubs based on the Tamaki River are at capacity, having to curtail recruitment initiatives and turn away new members. Estimated of over 22,500 usages of rowing, waka-ama, and canoeing/kayaking.

Highbrook Regional Watersports Centre Trust Highbrook Watersports Centre Clubhouse building

Impact – catchment

Highbrook Regional Watersports Centre is located within the boundaries of the Howick local board and bordering Otara-Papatoetoe, Mangere-Otahuhu and Māungakiekie-Tāmaki local boards. Total catchment includes low, medium and high deprivation communities. Significant service to high deprivation communities of greatest need.

The accessible location of the facility and its ability to cater for a variety of watersports will provide opportunities for a wide catchment of participants from a variety of socio-economic communities.



Deprivation of facility location (NZDep2018)

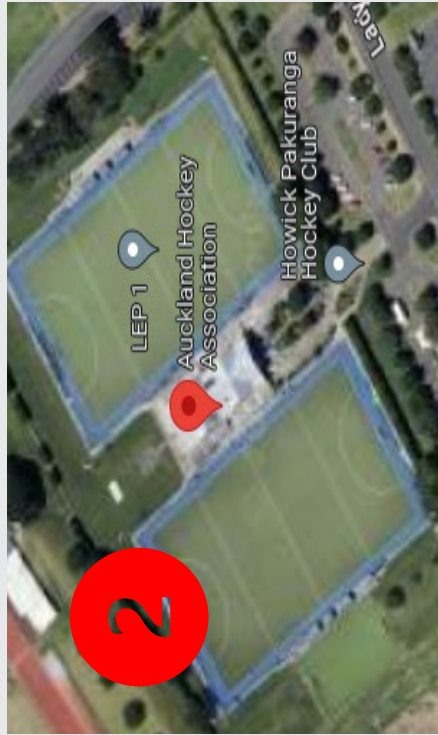
Area	Howick	Mangere	Māungakiekie-Tāmaki	Manurewa	Motatapu	Ōtara-Papatoetoe	Ōtahuhu	Waiuku	Waiwaka	Waiwharangi	Waiwhero	Waiwhero	Waiwhero
% of population in table-top 8	87%	72%	52%	50%	41%	35%	25%	18%	15%	11%	7%	4%	4%
Total population in LB	35	78,452	85,122	55,675	97,538	118,422	78,324	79,305	57,055	82,595	74,035	98,822	68,295
Population in table-top 8	31	56,527	44,367	28,326	32,091	27,326	31,527	20,366	23,891	19,118	20,366	12,824	7,722
% of population in table-top 8	86%	72%	52%	50%	41%	35%	25%	18%	15%	11%	7%	4%	4%
Total population in table-top 8	31	56,527	44,367	28,326	32,091	27,326	31,527	20,366	23,891	19,118	20,366	12,824	7,722
% of population in table-top 8	86%	72%	52%	50%	41%	35%	25%	18%	15%	11%	7%	4%	4%
Total population in table-top 8	31	56,527	44,367	28,326	32,091	27,326	31,527	20,366	23,891	19,118	20,366	12,824	7,722

Local Board of facility Local Board in catchment

Projects

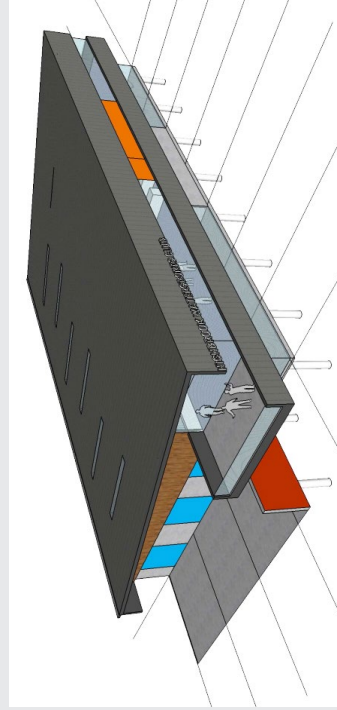
Auckland Hockey Association Incorporated *Lloyd Elsmore Park Turf #2 - renewal of turfs and lights*

To complete renewal of turfs and floodlights, funding up to **\$215,000**.



Highbrook Regional Watersports Centre Trust *Highbrook Watersports Centre Clubhouse building*

For construction of a watersports facility: an additional **\$2,200,000** to achieve a total contribution of up to \$5,300,000 or 60 per cent of total project costs, whichever is less.

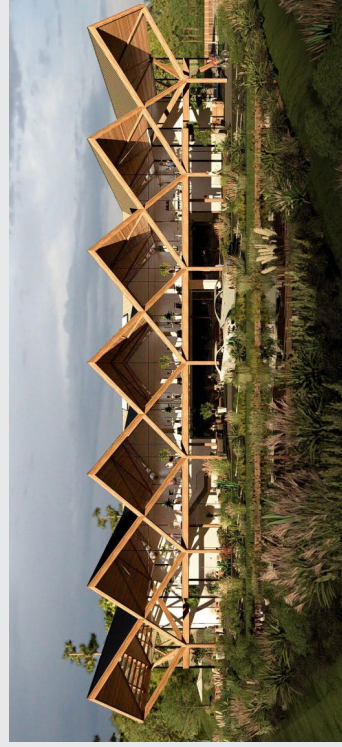




Projects

Ngāti Whātua Ōrākei Whai Maia Limited *Ngāti Whātua Ōrākei Sport and Recreation and Hauora Centre*

- A. Funding up to **\$600,000** or 33 per cent of design and consent costs, whichever is less.
- B. Conditional upon the parties (Council and Whai Maia Charitable Trust 1) agreeing to design of the facility, funding up to **\$5,000,000** towards construction of a second indoor court.



Pakuranga United Rugby Club Incorporated *Howick Pakuranga Community Sports Centre Facility Expansion*

For construction of additional indoor courts: an additional **\$5,571,061** to achieve a total contribution of up to \$8,245,000 or 60 per cent of total project costs, whichever is less.





Projects

Waka Pacific Trust *Wero Climb*

For lighting of the climbing frame and the provision of shade for participants, funding **up to \$250,000**.



West Auckland Riding for the Disabled Association Incorporated *Covered Riding Facility*


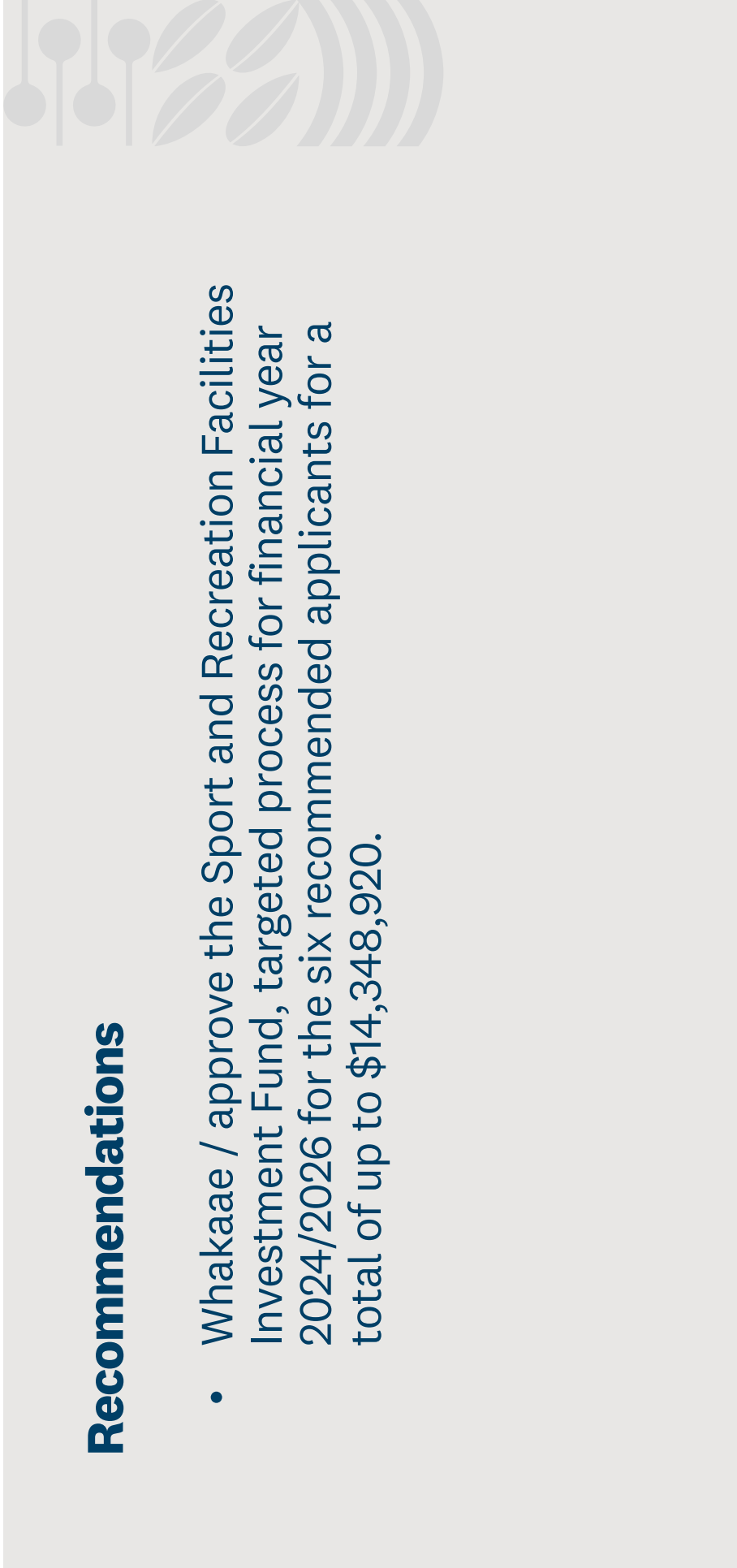
For the cost of access and landscaping works required to be compliant with Resource Consent, Building Consent, and safety requirements, funding **up to \$512,859**





Summary

Organisation and Project	Recommended funding up to	SRFIF % of total project cost
Auckland Hockey Association Incorporated <i>Lloyd Elsmore Park Hockey Stadium</i>	\$215,000	78
Highbrook Regional Watersport Centre Trust <i>Highbrook Watersports Centre Clubhouse building</i>	\$2,200,000	60
Ngāti Whātua Ōrākei Whai Maia Limited acting on behalf of Whai Maia Charitable Trust 1 <i>Ngāti Whātua Ōrākei Sports, Recreation and Hauora Centre</i>	\$600,000	33
Pakuranga United Rugby Club Incorporated <i>Howick Pakuranga Community Sports Centre Facility Expansion</i>	\$5,000,000	N/A
Waka Pacific Trust <i>Wero Climb</i>	\$5,571,061	60
West Auckland Riding for the Disabled Association Incorporated <i>Covered Riding Facility</i>	\$250,000	16
West Auckland Riding for the Disabled Association Incorporated <i>Covered Riding Facility</i>	\$512,859	43
Total:	\$14,348,920	



Recommendations

- Whakaae / approve the Sport and Recreation Facilities Investment Fund, targeted process for financial year 2024/2026 for the six recommended applicants for a total of up to \$14,348,920.



Next steps

- The remaining budget of \$9,521,045 will be used in the Sport and Recreation Facilities Investment Fund's contestable process for financial year 2025/2026.
- Contestable process opens 18 February with final funding decision scheduled for 29 July 2025.
- The draft approach for identifying and developing projects for Entry Pathways 2 and 3 will be presented to the Community Committee in an April 2025 workshop.



Item 8

Attachment A