

Date: Tuesday 11 February 2025
Time: 10:00 am
Meeting Room: Ground Floor
Venue: Hawiti Building
6 - 8 Munroe Lane
Albany

Hibiscus and Bays Local Board Workshop

OPEN ATTACHMENTS

ATTACHMENTS UNDER SEPARATE COVER



ITEM	TABLE OF CONTENTS	PAGE
3	Local board workshop	
A.	Streamview Way, Long Park youth park	3
B.	Long Bay youth park consultation summary report	53
C.	Graffiti prevention contract	119
D.	Allocation of external funds, East Coast Bays subdivision	133
E.	Browns Bay Town Centre safety improvements	159
F.	Shoreline Adaptation Plans: Snells to Ōrewa Weiti Estuary to Devonport Peninsula Hauraki Gulf Islands (Tiritiri Matangi)	171



Streamview Way - Long Bay Youth Park

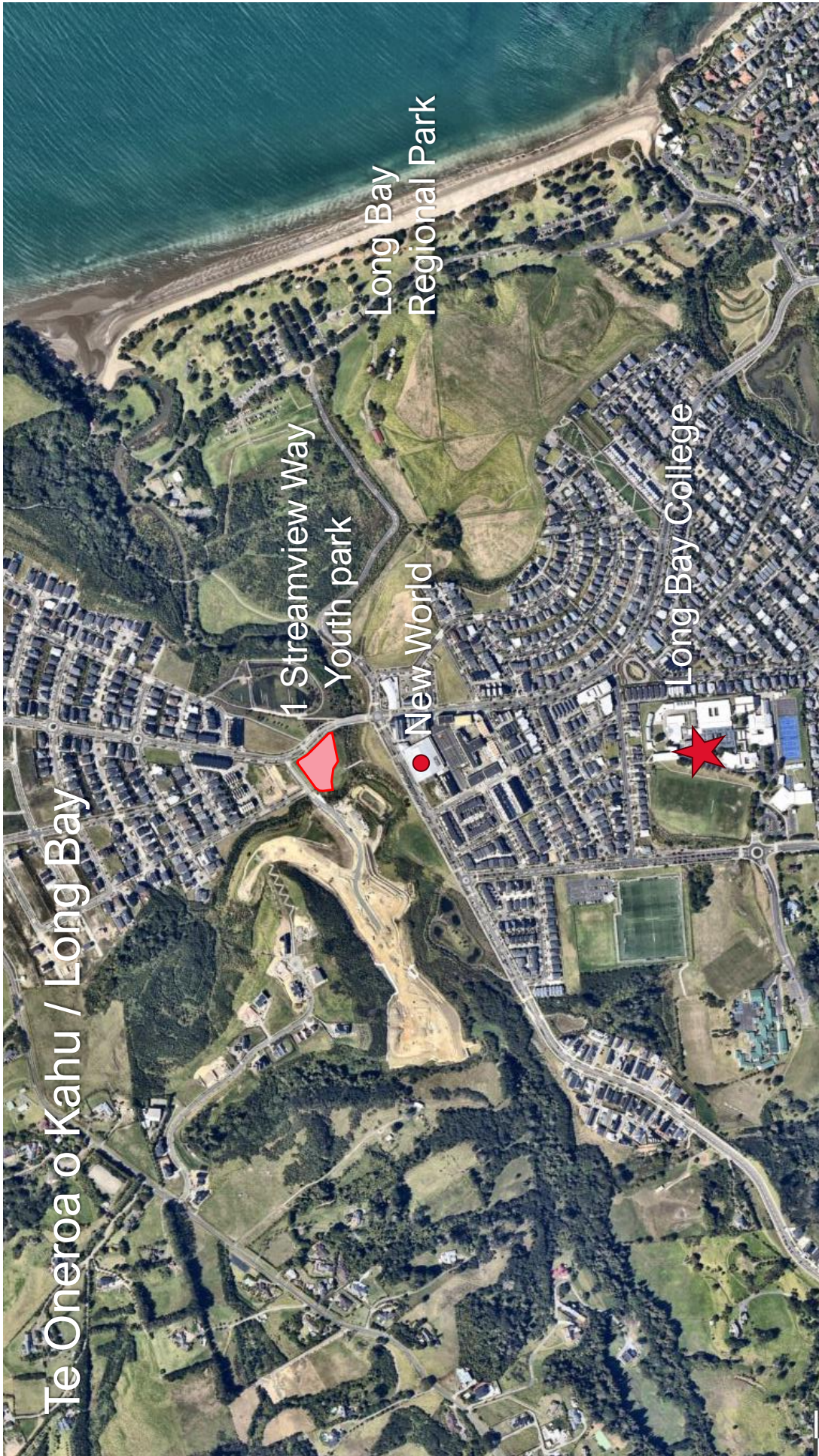
Hibiscus and Bays Local Board - 11 February 2025

Keren Alleyne - Senior Project Manager, Parks and Community Facilities



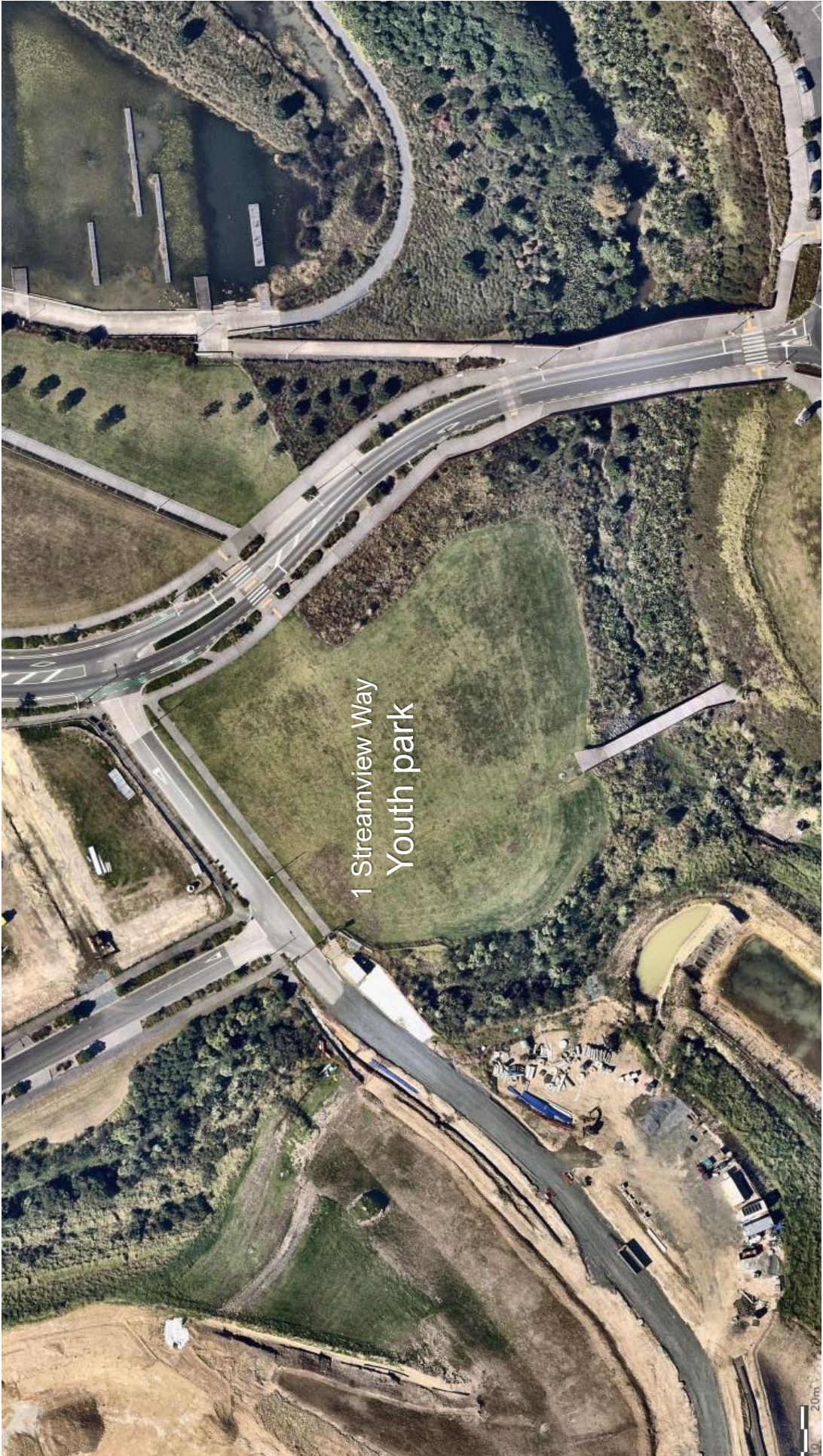
Purpose

To provide an update on recent community engagement for the youth park proposed for 1 Streamview Way, Long Bay and receive feedback on the next steps proposed.



Item 3

Attachment A





Project background

Budget allocation – Growth funding \$1.83 million

Scope:

- Establish a youth park for 11 – 18-year-olds, providing facilities which will cater to the needs of rangatahi.
- The facilities to be provided will fill gaps in the play and recreation network.

Timeline to date:

- Project initiation – September 2024
- Community consultation completed – December 2024.



Strategic assessment and alignment

Hibiscus and Bays Local Board Plan 2023

Our people

Initiative: Support the youth networks in our area to help our young people thrive and to have a voice in local board decision-making

Our environment

Initiative: Supporting Ngāti Manuhiri, other mana whenua and mataawaka to draw on mātauranga Māori (Māori knowledge) to enrich the work of those groups working to restore the land and the sea.

Our community

Objective 1: Every corner of the Hibiscus and Bays has a past that we remember this through the names given to places and the stories shared
Key initiatives: Continue to support the telling of our local heritage stories, resulting in the adoption of te reo Māori names to add to the English names of parks and places of our area, as well as making the historical sites from all peoples from this area more accessible.
(Utilize the Te Kete Rukuruku programme for renaming Streamview Way Park)

Our community

Objective 2: There is nowhere better than our local parks and reserves for a picnic, a sports game or meeting friends
Key initiatives: Support the development and increased use of our local parks, reserves, and sports fields by being available for people of all abilities, ages, and socio-economic backgrounds to enjoy in a range of leisure and recreation activities.

Our community

Objective 3: We have more opportunities to connect for recreation, play and to help others in our community than ever before.
Key initiatives: Engage with our community, and in particular mana whenua, on the future uses of our undeveloped reserves, and older established ones, including investigation of cost-effective options for other informal recreation and play in these areas







Engagement and Consultation



- 

Consultation flyer – 500 delivered and posters
- 

AK Have Your Say Survey – 4 Nov to 13 Dec 2024
- 

Long Bay College student workshops x2
- 

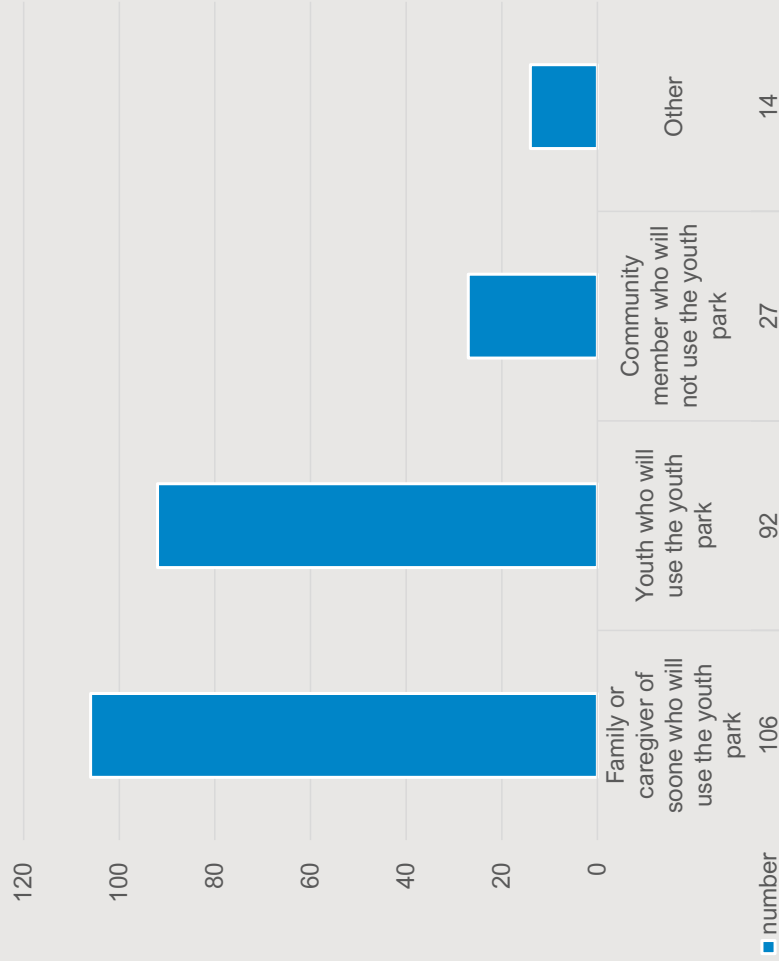
Key stakeholder engagement & community meeting
- 

East Coast Bays Library drop-in session
- 

Manu whenua engagement
- 

Browns Bay Christmas market stall – 7 Dec 2024

Engagement and Consultation - HYS results



**Who is responding?
240 – 242 respondents**

The family or caregiver of someone who will use the youth park – 44%

A youth who will use the youth park – 38%

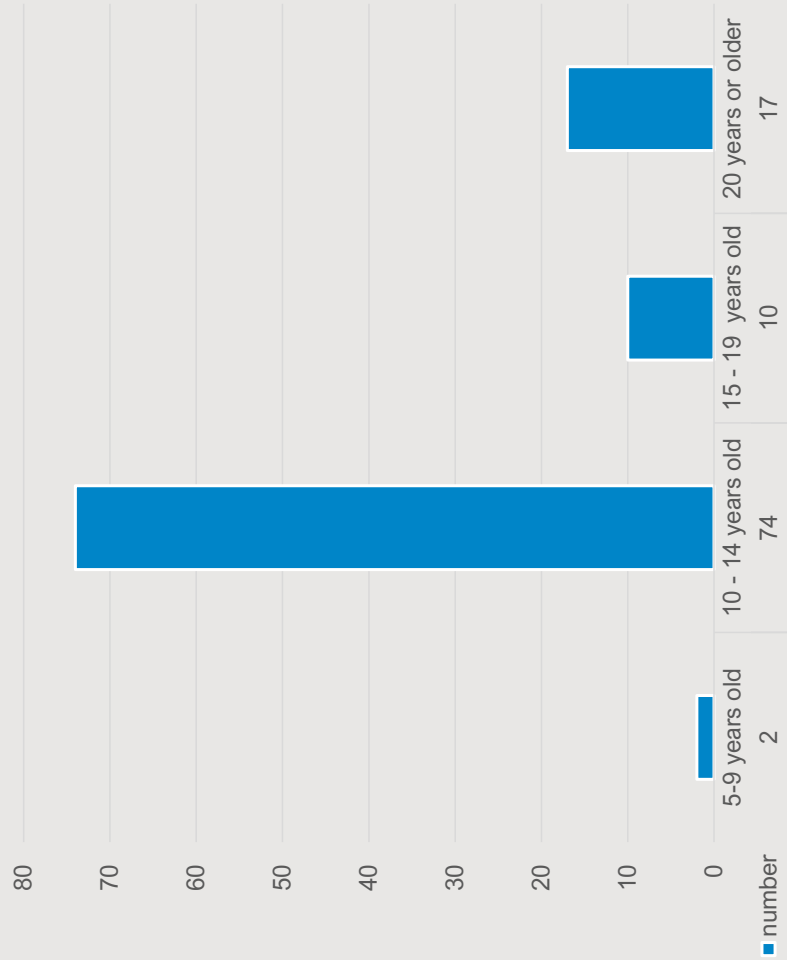
A community member who will not use the youth park – 11%

Other – 6%

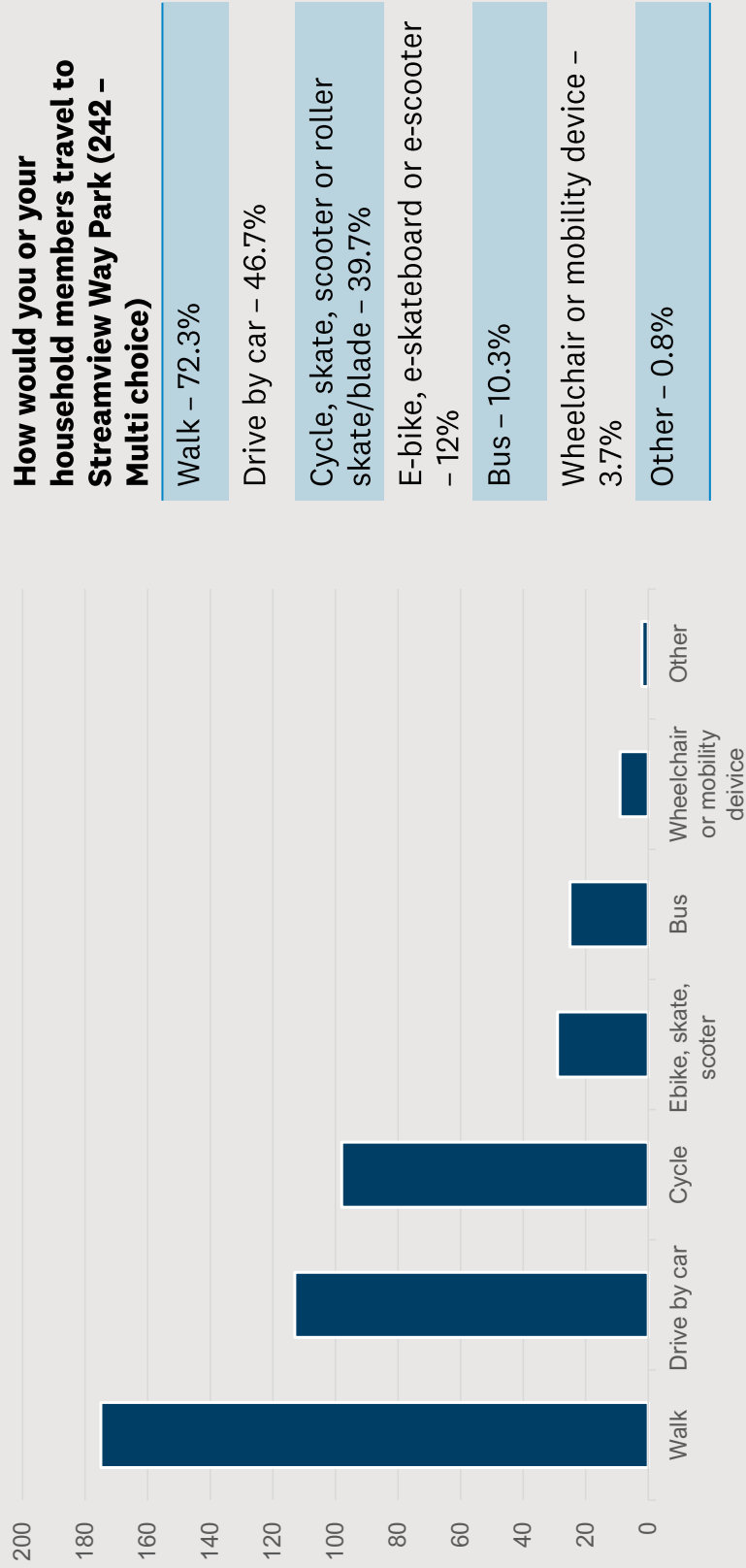
Engagement and Consultation - HYS results

If you are responding as a youth park user, what age are you?

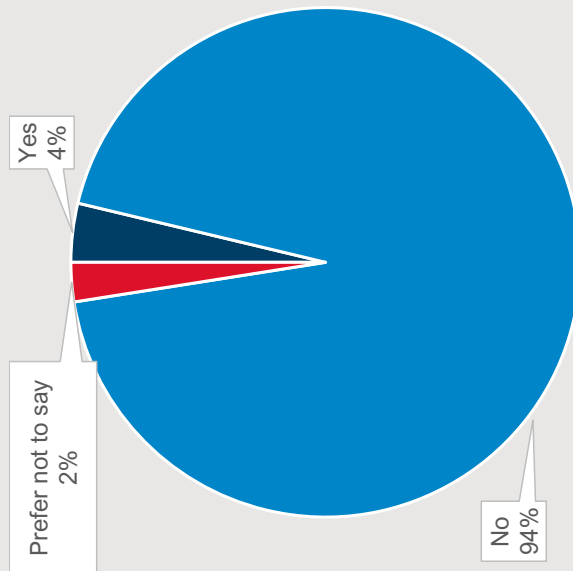
- 5 - 9 years old - 2%
- 10 - 14 years old - 72%
- 15 - 19 years old - 10%
- 20 years or older - 17%



Engagement and Consultation - HYS results



Engagement and Consultation - HYS results



Could you share with us some of the difficulties you have accessing Auckland Council parks?

Not pram-friendly. Overgrown grass = bees and this is unsafe for my children

Walk with crutches

Flat walking paths for family members who have ambulatory issues (but no wheelchair)

Does anyone in your household have a disability that could affect how they are able to access the park? (235)

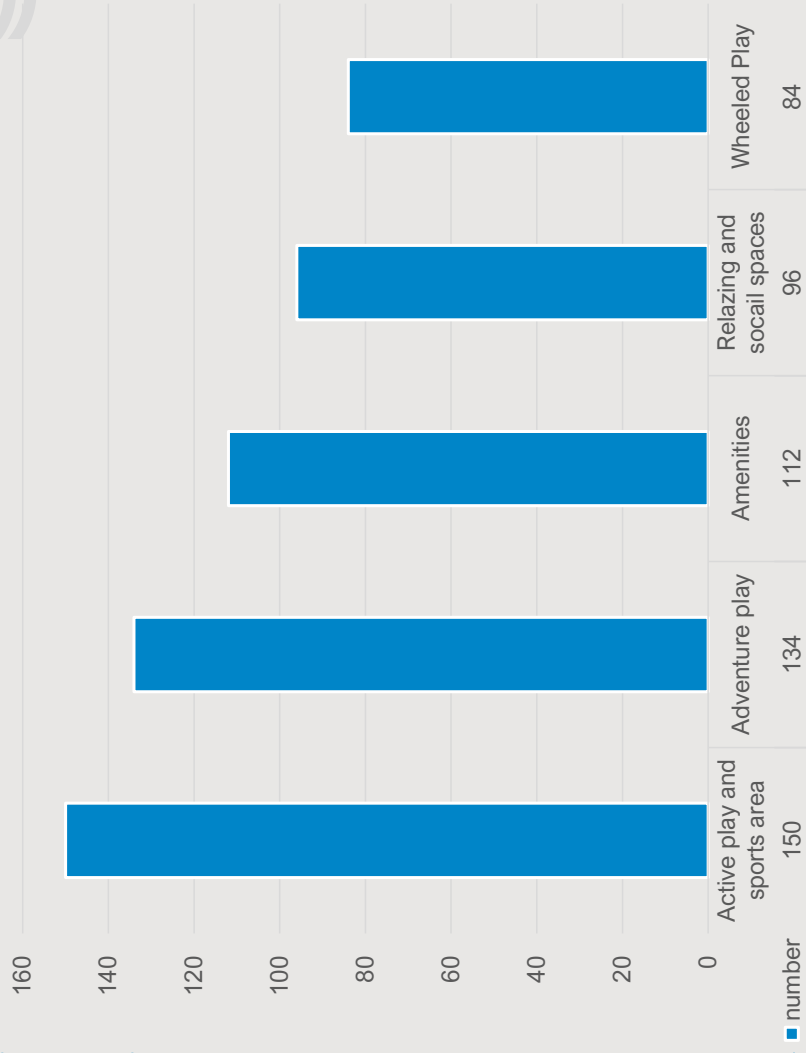
Yes – 4%

No – 96%

Engagement and Consultation - HYS results

What activities or facilities would you like to see in the youth park? (Select up to three options) 242

Active play and sports area - 150
Adventure play - 134
Amenities - 112
Relaxing and social spaces - 96
Wheeled play - 84
Environmentally friendly features - 45
Performing arts - 30
Arts and culture - 29
Mindfulness activities - 23
Learning spaces - 15
Other - 11



Engagement and Consultation - HYS results

What is important to you when considering the design of the youth park? Selection up to three options. 241

Multi-functional for flexible use – 58%

Beautiful and inviting– 57%

Zones for different age groups – 53%

Greenery and natural – 41%

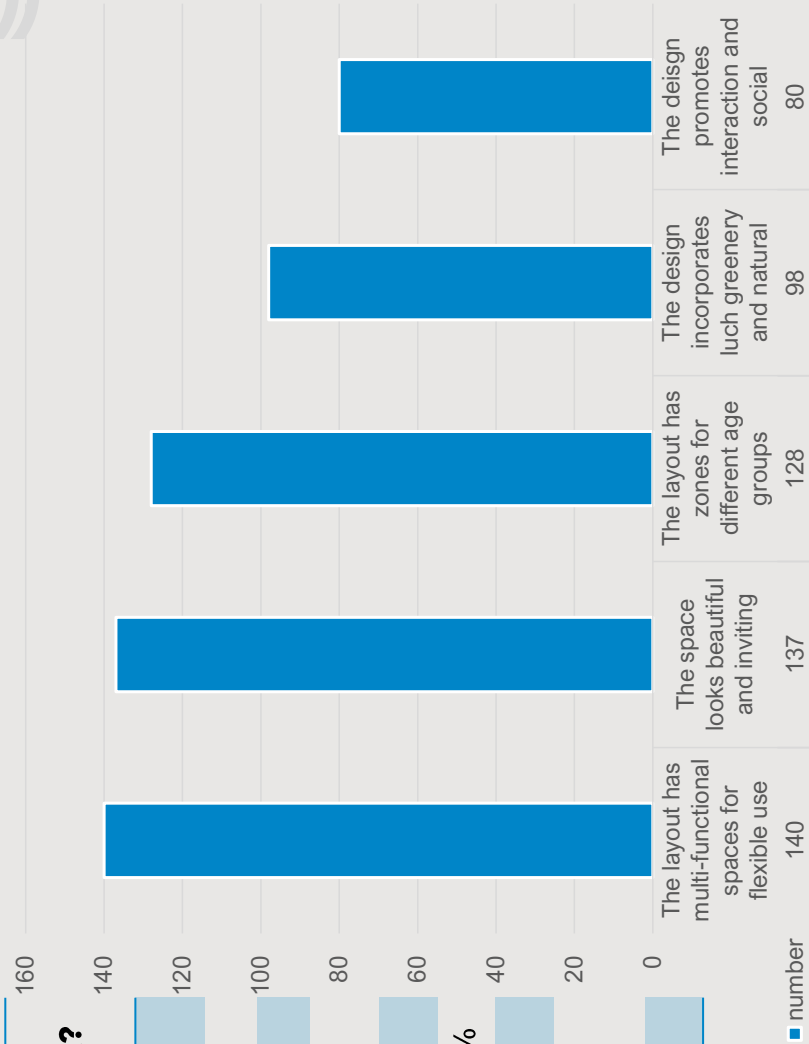
Promotes interaction and social – 33%

Bold & vibrant with creative features - 23 %

Diversity and cultural expression – 13%

The design reflects the meaningful story and history– 7%

Other – 3%



Engagement and Consultation - HYS results

If we include play equipment, what type of equipment would you like to see?

Monkey Bars

Climbing wall / rock climbing

Jungle gym

Slide

Swings

Flying fox

Inground trampoline

Hamster wheel

Adventure play

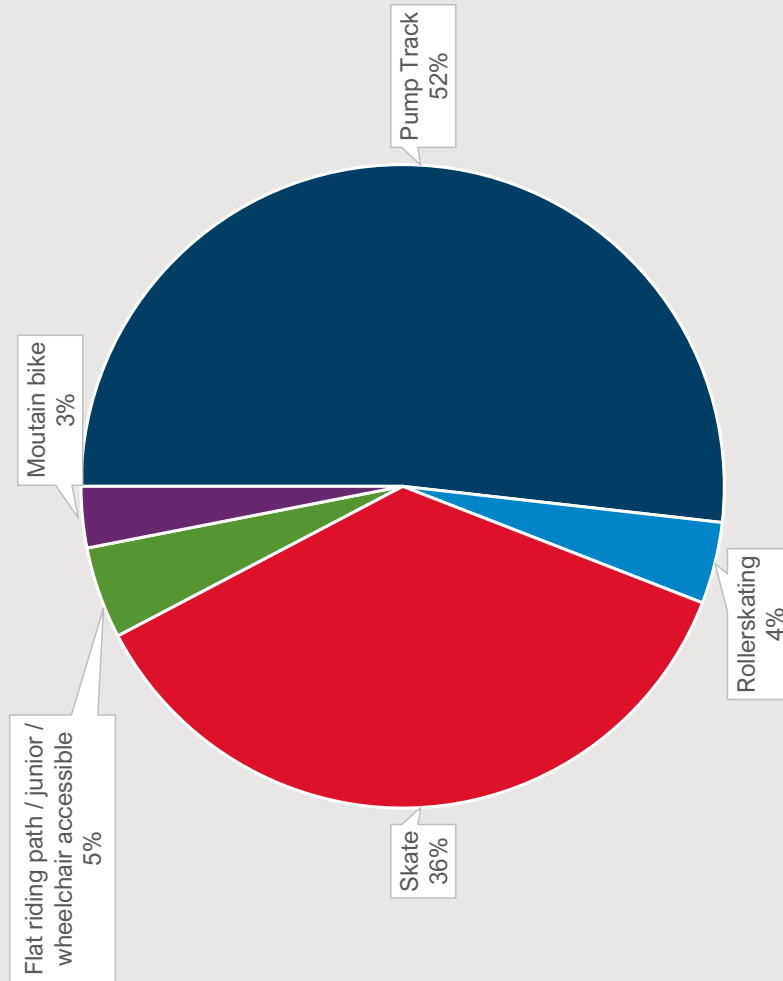
Music instruments

Round about

Gym equipment



Engagement and Consultation - HYS results



What type of wheeled play would you like to see?

- Pump track – scooter / bike - 52%
- Skate – includes street, ramp and bowl - 36%
- Flat riding path / wheelchair accessible / young kids - 5%
- Roller-skating or blading – 4%
- Mountain bike – 3%



Engagement and Consultation - HYS results

How can you see your culture, identity or community being represented in this park?

Māori motif / Māori and Pasifika designs / all signs te reo Māori and English / statues

Art work murals

Sea connection and native plants / native planting

Mix of design showing diversity of culture in Long bay. E.g. European, Asian, Māori, Vietnamese, Japan, Korea, India Mexico and others adopted by NZ. This is a multicultural area.

Keep it generic

Coloured concrete / colour

Add festive decorations at different festivals, e.g. Red lanterns

Wall art

Bulletin board

Black board wall where kids can draw and express themselves.

Heritage connected to Vaughan's cottage

Modern design of the community, no bright colours, lots of greenery. This is a beach town with lots of native plants and wildlife.

Engagement and Consultation - HYS results

Safety ideas

Good lighting

Safety surfaces under the playground

No skate / wheel park

CCTV

Fenced area for dogs

Closed over night like the regional park – 9pm closure.

Youthline information on signs

Benches for parents and guardians

Age restricted play areas

Lots of shade

No smoking / vaping signs / alcohol

Fences so kids don't run on the road

Community patrols

Good visibility

Shelter

Pool fences so it can't be tagged

Engagement and Consultation - HYS results

Inclusive and accessible

Accessible path accessing bridge

Include ramps

Seating

Have more space for different age people

Welcome signs

Accessible toilet

No loud music signs

Multiple entries

Inclusive signs

No pets

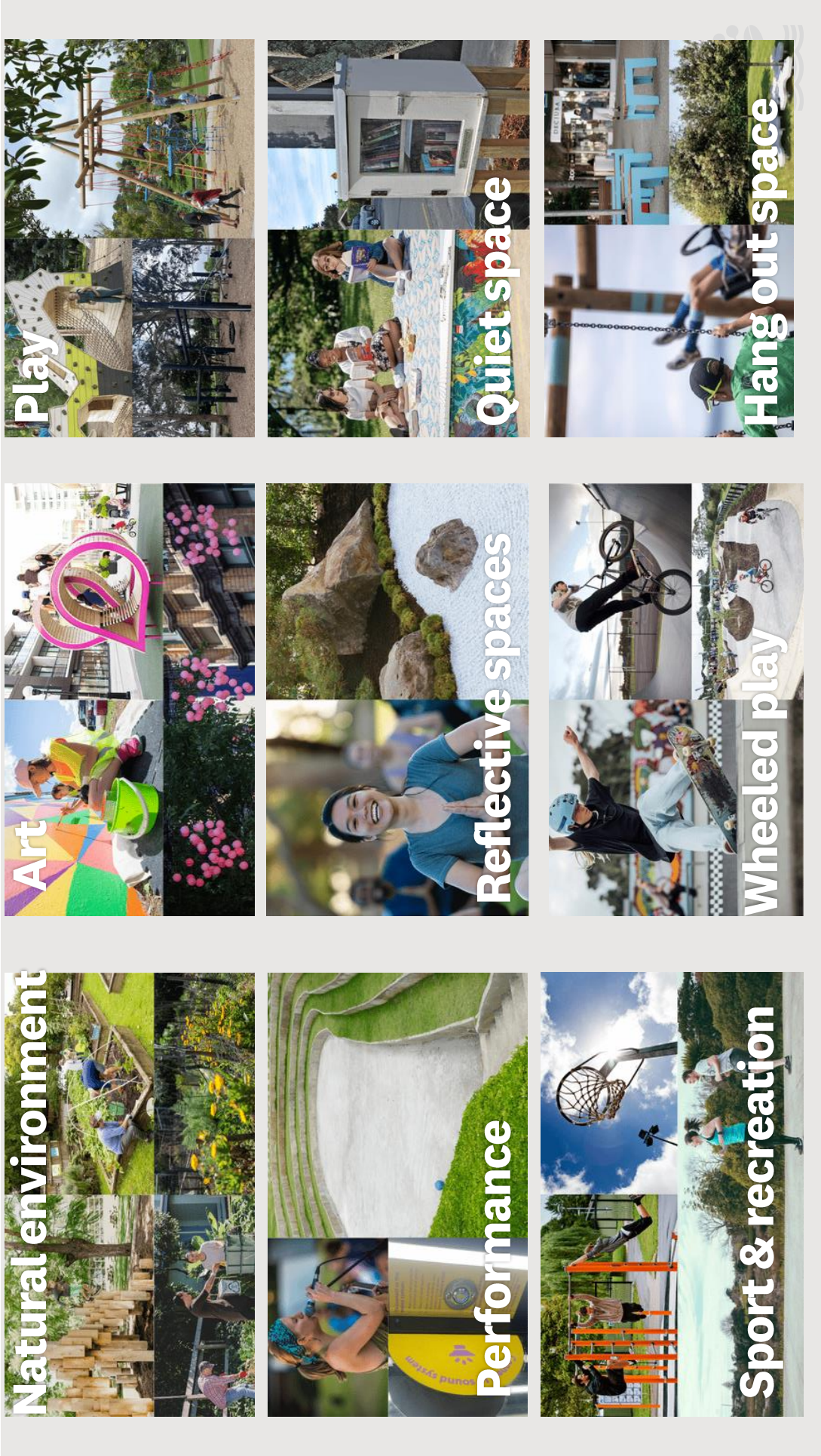
Wide paths





Item 3

Attachment A



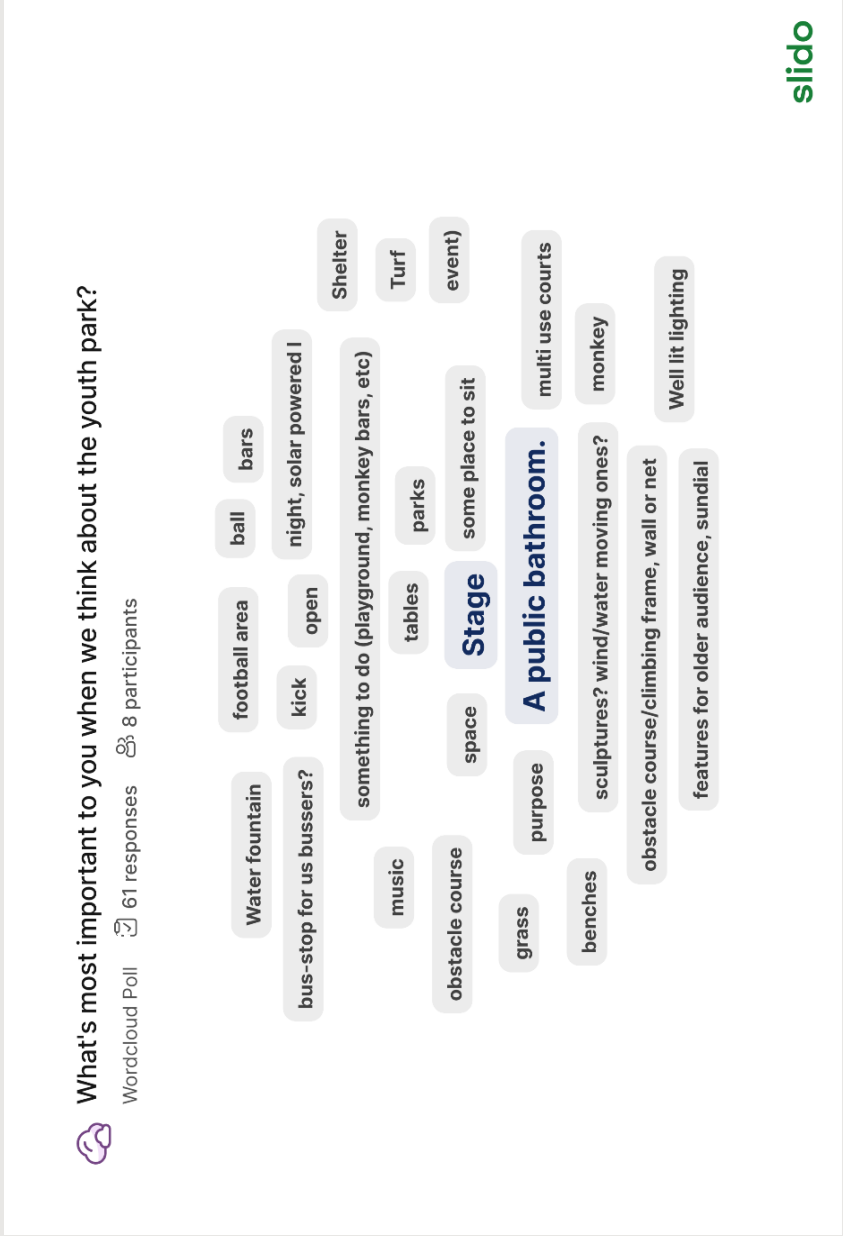
Engagement and Consultation – College workshops

ZONES important to the group:

- Active play (sports)
- Adventure play
- Relaxing and social spaces
- Performing arts

AMENITIES important:

- Bathroom
- Shelter
- Water fountain
- Lighting



siido

Step 3

Consider how these spaces might work for different types of park users, including:

- boys, girls & gender diverse
- neurodiverse
- disabled users

What could you change to make the space better for them?

