

Date: Wednesday 12 February 2025
Time: 11.45am
Meeting Room: Room 1, Level 26
Venue: Te Wharau o Tāmaki - Auckland House
135 Albert Street
Auckland

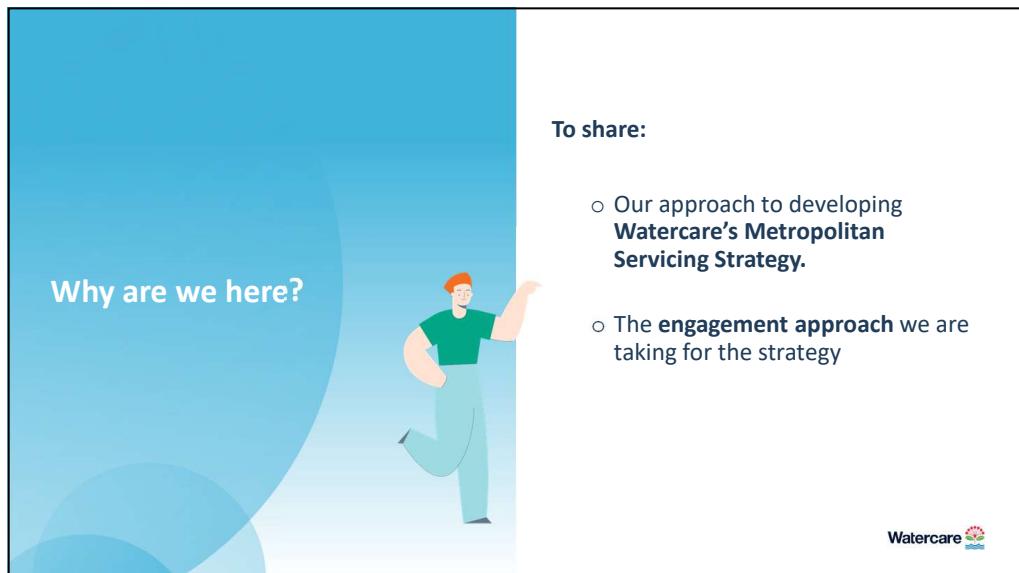
Te Komiti mō te Kaupapa Here me te Whakamahere / Policy and Planning Committee Workshop

OPEN MINUTE ITEM ATTACHMENTS

ITEM	TABLE OF CONTENTS	PAGE
3	Workshop: Watercare Draft Metro Servicing Strategy (Water Supply and Wastewater)	
	A. 12 February 2025, Policy and Planning Committee Workshop: Watercare Draft Metro Servicing Strategy (Water Supply and Wastewater) - presentation	3



1



2

What is a servicing strategy?

A servicing strategy is a long-term strategy (70+ years) designed to ensure that our current and future communities have access to safe, resilient and affordable water and wastewater services as our population grows and the climate changes.

Enables:

- A more integrated approach
- Meaningful engagement with the community





Watercare
3

3

How do our strategies and plan work together

Servicing strategies help link the regional plans and strategies to our day to day decision making

Auckland Council

Auckland Plan

Unitary Plan

30-year Infrastructure Strategy

Future Development Strategy

Auckland Water Strategy

Long-Term Plan

Letter of Expectations

Watercare

Statement of Intent

Business Plan

Asset Management Plan (AMP)

Funding Plan

Operational delivery

Crown

Charter

Legislation, regulations and standards

Servicing Strategies, Consent Planning, Facility and Network Plans all help inform the AMP.

Business Plan to be released April 2025

Watercare
4

4

Servicing strategy areas

We have tried, based on the connectivity of our water and wastewater services, to create a 'community/township centric' servicing strategy structure. We have 12 servicing strategies, in different stages of development.

<p>Externally engaged and completed</p> <ul style="list-style-type: none"> • Helensville and Parakai • Beachlands, Maeratai, Whitford • Waiheke
<p>Ready for external engagement</p> <ul style="list-style-type: none"> • Metropolitan
<p>Internal draft being reviewed</p> <ul style="list-style-type: none"> • Warkworth • Wellsford • Omaha • Denehurst • Bombay • Kawakawa bay
<p>Not started</p> <ul style="list-style-type: none"> • South-west communities* • Muriwai

* while the south-west communities are connected to the metropolitan water network, due to the significant growth that is projected for this area, we are developing a separate servicing strategy to cater to the specific needs of these communities.

5

Metropolitan servicing strategy challenges

Climate change

Population growth

Where do we source our future water from?

Where does our wastewater go?


What do we do with our biosolids?

6

Finding the right balance

Sometimes we need big decisions to be made, and they will be based on best information at that moment, to protect public health or reduce environmental risk.

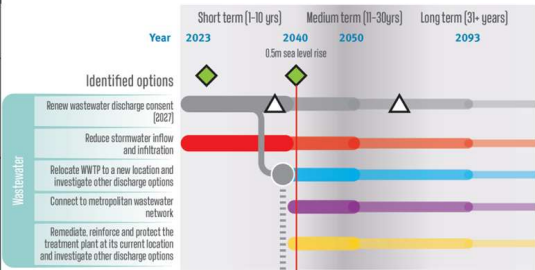
We need to ensure that these large infrastructure solutions do not compromise the ability for smaller scale, localised solutions to be realised.



Watercare
7

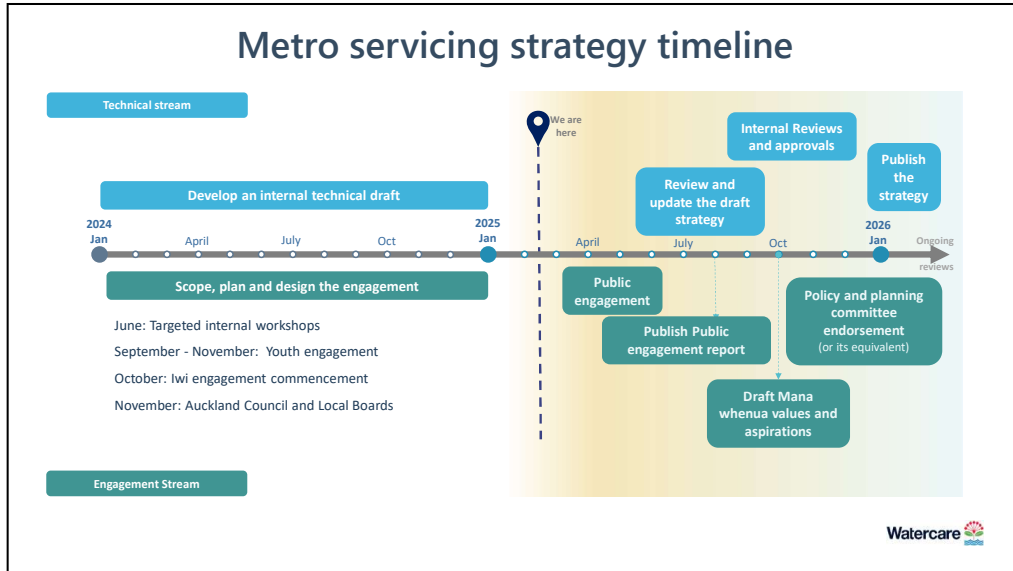
7

What does the servicing strategy include?

Scenarios	We use AI to look at combined impacts of climate change and population on demand to prepare for the most probable future scenarios.	<p>An example of a dynamic adaptive pathway (from Helensville servicing strategy)</p> 
Adaptive planning	We consider all the possible options and potential pathways and identify key decision-making points in the future.	
Decision-making framework	We aim to develop a decision-making framework to help with comparing the different options and pathways.	

Watercare

8



9

Engagement: we are all in it together

As a city we are facing water and wastewater challenges that will require effort from all of us to overcome. Each of us has a role and power to make a positive impact.

The aims of the metropolitan servicing strategy for communities include:

- **Engage communities:** Involve communities early and actively in water management.
- **Enhance transparency and dialogue:** Enable open communication on challenges and decisions.
- **Encourage shared responsibility:** Promote community understanding and value of water resources

Watercare

10



11

What we have done so far...

Youth Engagement | Engaging with the next generation of decision makers

Youth summits - Y10 – Y13

- 40 students

Hackathon - University 18-24

- 22 students

What they had to say:

- Invest in the future now
- Innovation and research is key
- Tell the story of water, help us understand
- Involve us: Change begins with people



Community Partnerships | Collaboration and preparation

Community Partnering Workshop

Working with Auckland council Deliberative Democracy

- 14 Community Leaders attended

What they had to say:

- Local Solutions
- Community involvement is crucial
- Transparency and clear communication
- Sustainable solutions and Innovation



Mana Whenua | Collaboration and preparation

X 2 Parakiuhi

10 Mana whenua reps

What they had to say:

- Stop the wash and rinse approach
- Engagement must be genuine
- Strong interest in the kaupapa



12

