

Date: Wednesday 12 February 2025
Time: 10:30am
Meeting Room: Local Board Chambers
Venue: 35 Coles Crescent
Papakura
Auckland

Papakura Local Board Workshop

OPEN ATTACHMENTS

ATTACHMENTS UNDER SEPARATE COVER

ITEM	TABLE OF CONTENTS	PAGE
3	Local Board Workshop	
	B. Attachment B – Papakura Local Board - Community Wellbeing Quarter Two Update	3



Community delivery work programme update Quarter 2 2024/2025

Papakura Local Board - 12 February 2025

Tracey Hainsworth-Fa'aofu
Community Broker / Tūhono
Hapori o Papakura,
Community Wellbeing





Agenda

Performance

- Libraries and community hubs
- Community places and arts

Updates FY2024/2025, quarter 2 by:

- Our community
- Our people

Highlights from our community and our people

Work programme activity updates

Community delivery work programme updates for quarter 2:

PUTTING Community Wellbeing AT THE HEART OF ALL WE DO.

ID	Activity	Presenter
	Introducing new Community Wellbeing staff	Dany and Liz Muliaga
	Performance: Libraries and Hubs	Dany Miller-Kareko
	Our Community	
343	Papakura Art Gallery	Nansi Thompson
344	Hawkins Theatre	Peter Hunt
1198	Sir Edmund Hillary Library	Dany Miller-Kareko
1199	Te Paataka Koorero o Takaanini	Jamie-Lee Kingi
Regional	Drury Rural Library	Hazel Audain
Regional	Paataka koorero kaewa / Mobile library services	Jo Brewster



Work programme activity updates

Community delivery work programme updates for quarter 2:

PUTTING Community Wellbeing AT THE HEART OF ALL WE DO.

ID	Activity	Presenter
Our People		
351	Support Māori-Led Aspirations	Tracey Hainsworth-Fa'aifo
352	Diverse participation: Youth Initiatives - Papakura Youth Council	Emma Helmich
350	Māra Kai / Community Garden & Food Security	Dominic Lee
355	Community-Led Resilient Communities	Dominic Lee
356	Papakura Local Board Safety Investment	Dominic Lee
4377	Redhill Community Centre Programming	Dominic Lee



Work programme activity updates

Community delivery work programme updates for quarter 2:

PUTTING Community Wellbeing AT THE HEART OF ALL WE DO.

ID	Activity	Presenter
Our Community		
342	Papakura Pipe Band	Bobby Kennedy
345	Papakura Brass Band	Bobby Kennedy
1486	Off Broadway Big Band	Bobby Kennedy
348	Community Arts Programme	Bobby Kennedy
346	Papakura Museum	Bobby Kennedy
349	Community-Led Capacity Building Smiths Ave	Dominic Lee
357	Support Engagement with Papakura Rangatahi Voice	Emma Helmich



Community Wellbeing – Community Delivery South

New kaimahi quarter 2:

Role	Kaimahi
Manager Community Place, Library Papakura Sir Edmund Hillary Library & Integrated Service Centre	Sonia Munro
Place & Partner Specialist, Arts	Borni Tukiwaho
Specialist Advisor	Vanitha Subramaniam

**PUTTING Community
Wellbeing AT THE
HEART OF ALL WE DO.**



Performance: Metrics and Libraries

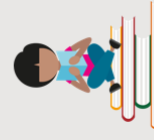
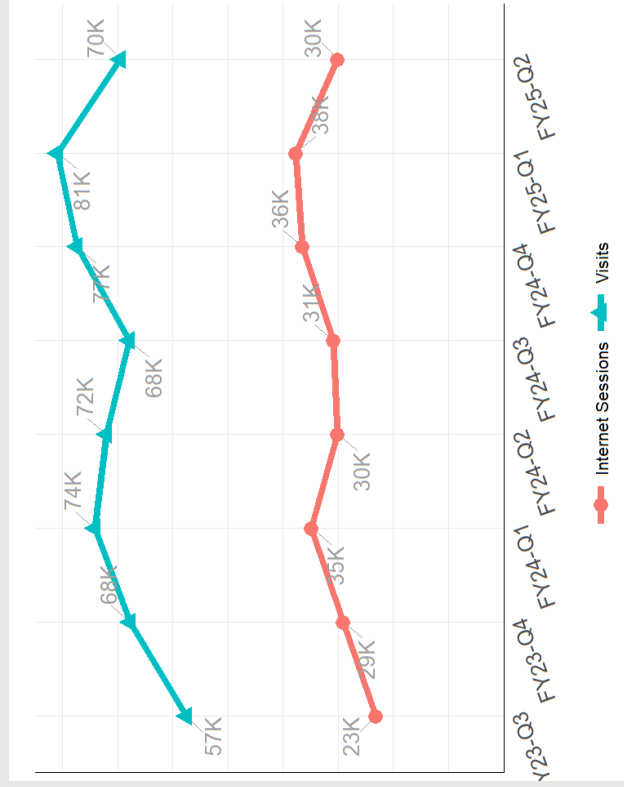
Libraries in Papakura Local Board area:

- Sir Edmund Hillary Library (Papakura)
- Te Paataka koorero o Takaanini - Takaanini Community Hub & Library

Across these libraries this quarter:

- 101 Skinny Jump sign-ups
- 952 face-to-face council enquiries (e.g. dog registration, rates queries, etc.)

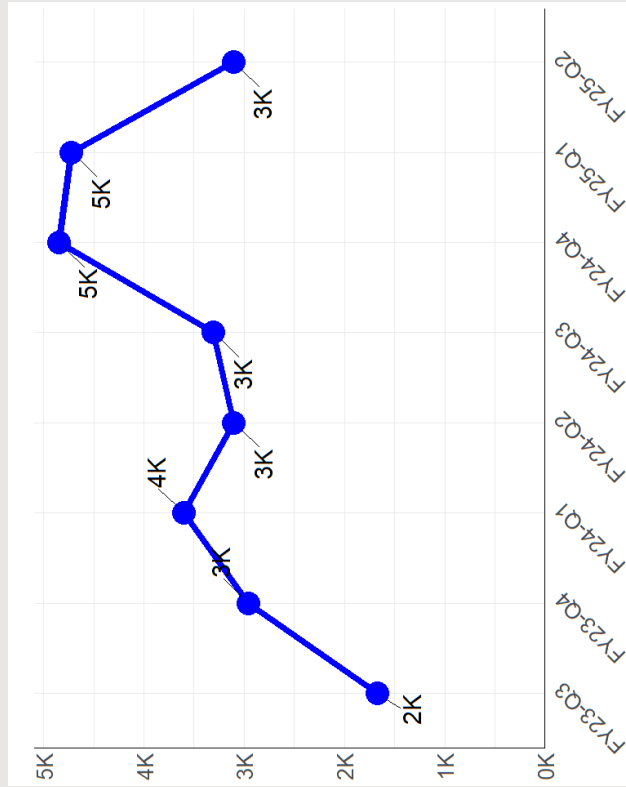
Number of visits and internet sessions (PC and WiFi)



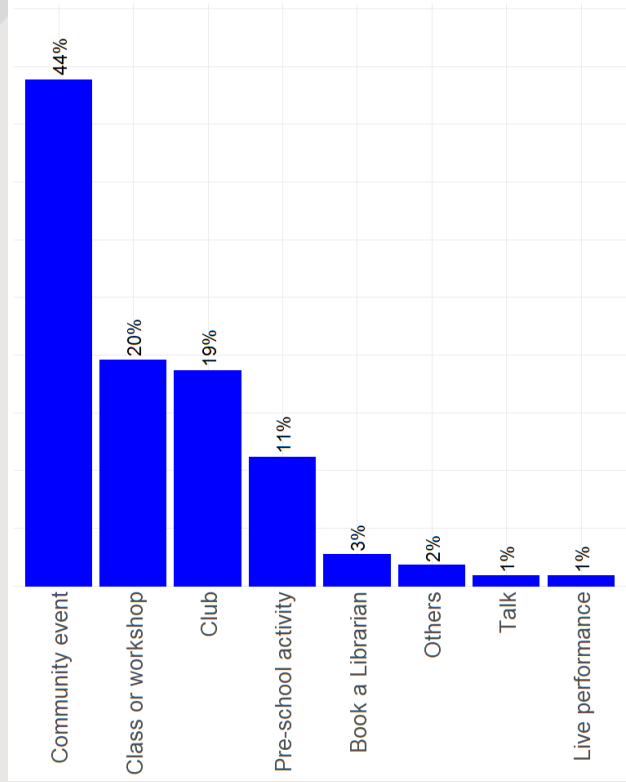
Performance: Library Activities



Number of participants for programmes and events

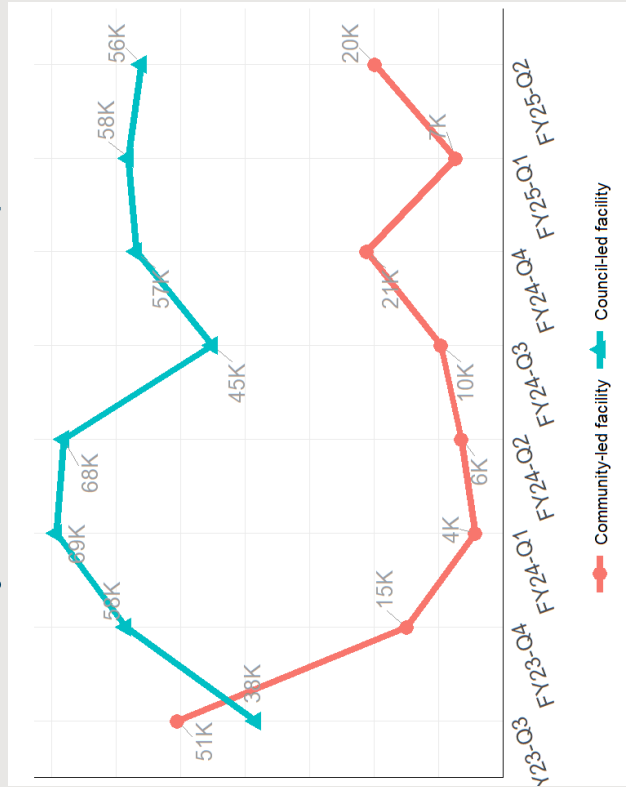


Breakdown of activities delivered



Performance: Participation

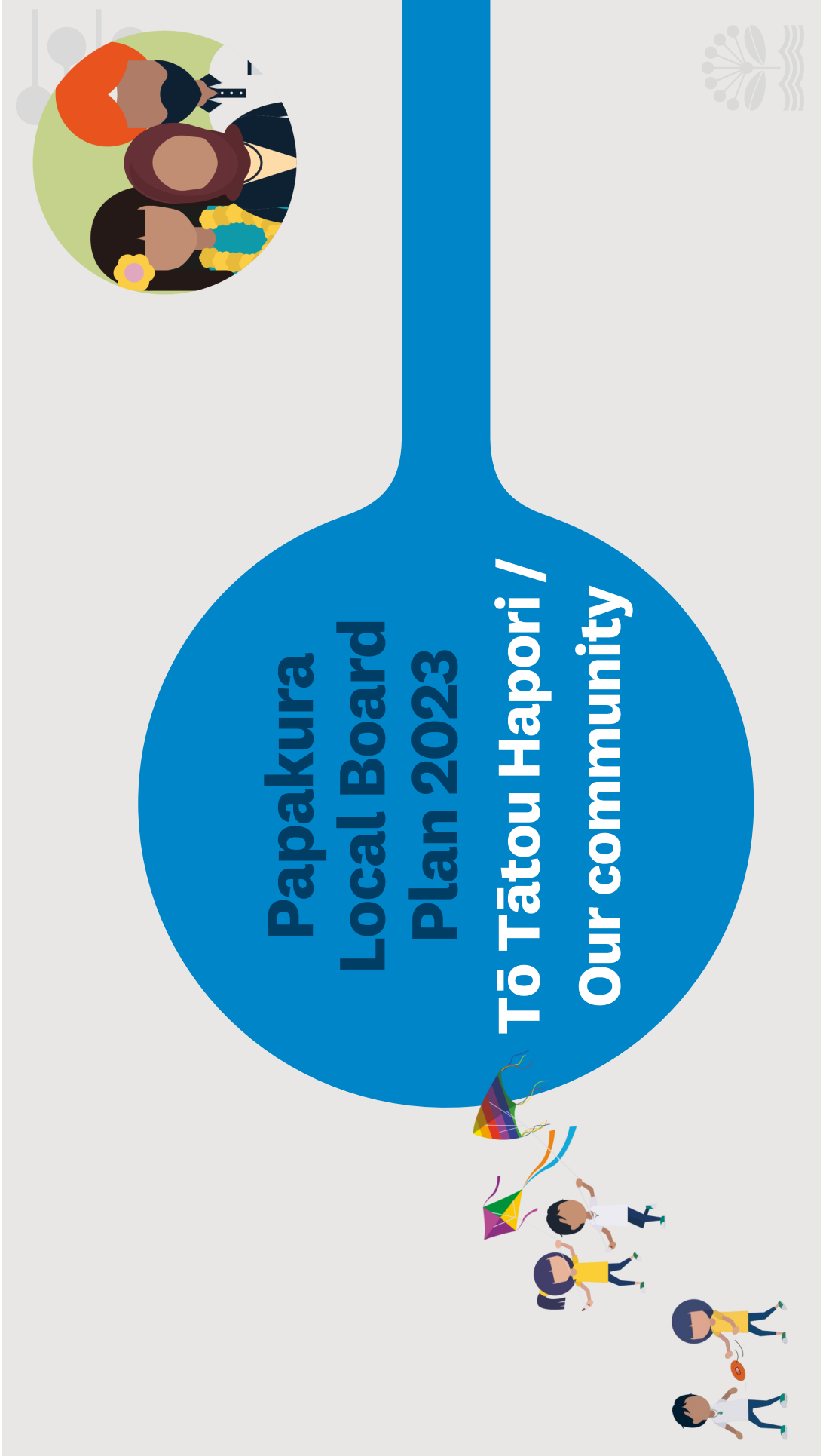
Number of users of council and community led facilities & arts partners



Council-led facilities in this local board: Drury Hall, Elizabeth Campbell Centre, Massey Park Grandstand, Papakura Library Meeting Room, Papakura Old Central School, Smiths Avenue, Takaanini Community Hub, Hawkins Theatre, Papakura Art Gallery

Community-led facilities in this local board: Papakura Pipe Band, Papakura Brass, Papakura Museum, Off Broadway Big Band





Nansi Thompson



343 - Papakura Art Gallery

Local board plan objective:
Services and facilities meet the community's needs now and into the future.



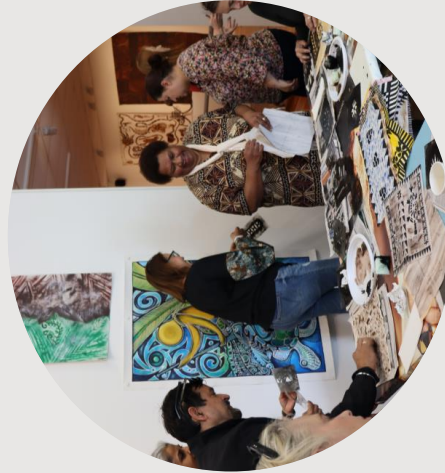
343 - Papakura Art Gallery



Toi Whītiki – Arts & Culture Strategic Action plan: Integrate Arts & Culture into our everyday lives.



Red Wave/Blue Wave Collective from the Oceanic Centre, Suva, Fiji



Masi (Fijian tapa) workshop
Sir Haaere Williams multimedia workshop
Paula Green Christmas drop-in



Paula Green exhibition 'Between the Flowers,' with collaborative mural



343 - Papakura Art Gallery



Totals for quarter 2, 2024

- Attendees: 628
- Public programmes: 33
- Public programmes that met Māori outcomes: 18

Totals for quarter 2, 2023

- Attendees: 407
- Programmes: 16
- Public programmes that met Māori outcomes: 17



Peter Hunt



344 - Hawkins Theatre

Local board plan objective:
Services and facilities meet the community's needs now and into the future.



344 - Hawkins Theatre

33 programmes, included 117 film screenings, performances, workshops, and rehearsals, attracting a total of 15,183 participants



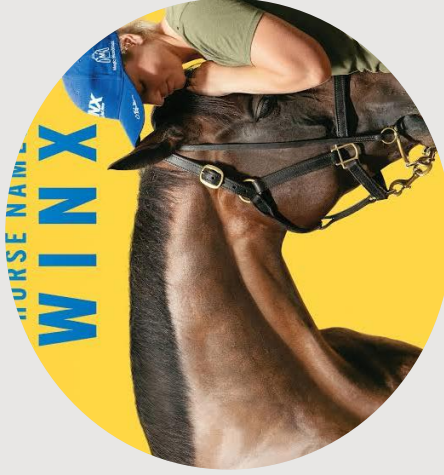
Venue Hires

'Dance School season' - local dance schools hire the venue for end of year performances, including Velocity Dance, Dance Collective, Great South Dance Academy and Stewarts Dance Studios. Spanning over a month the venue can see upwards of 5000 attendees.



Hawkins Youth Theatre

Highlight of the quarter '**Alice in Wonderland**'. Broke all box office records for a Youth theatre production in the venue with over 2,300 attendees.



Film Screenings

Q2 saw some great films coming through the venue, highlights in October - the film '**A Horse Named Winx**'. December had two big blockbusters films '**Red One**' and the highly anticipated '**Wicked**'.


Dany Miller-Kareko



1198 - Sir Edmund Hillary Library (& Integrated Service Centre)

Local board plan objective:
**Services and facilities meet
the community's needs now
and into the future.**



1198 - Sir Edmund Hillary Library (& Integrated Service Centre)



Papakura Positive Ageing Expo



Crafternoons and tamariki engagement



Piipii Paopao with Mātaatua



Jamie-Lee Kingi

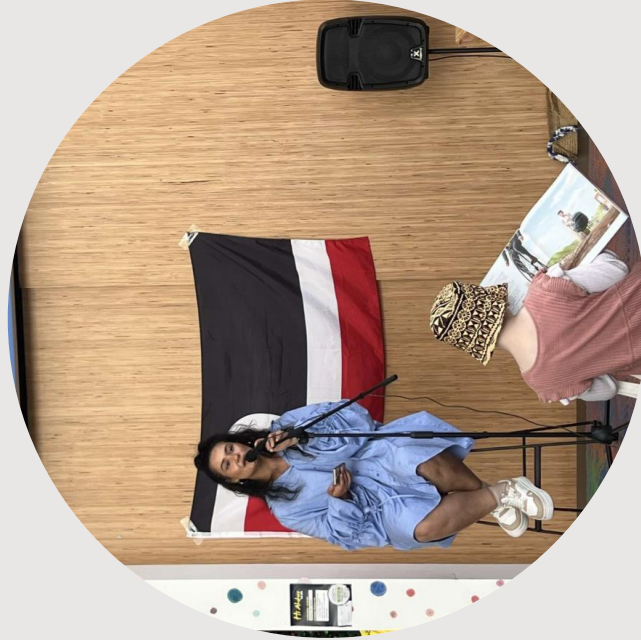


1199 - Te Paataka koorero o Takaanini (Bilingual library and hub)

Local board plan objective:
**Services and facilities meet
the community's needs now
and into the future.**



1199 - Te Paataka koorero o Takaanini (Bilingual library and hub)



Waiata i te whare:
Jordyn with a Why and a Niu Dawn



Hauora day community activations



1199 - Te Paataka koorero o Takaanini (Bilingual library and hub)



Pasifika programming:
Niuean Language Week



Tamariki offering for
Diwali Celebrations



Maaori programming for
tamariki.
Kohanga Outreach
He Rangī mokopuna



Hazel Audain



**Drury Rural Library
(Rural Volunteer Library)**

**Regional Support -
Community Impact**



Drury Rural Library



- 2024/2025 significant increase in usage
- 14 volunteers - very proactive
- Services offered at the library
 - Tech Fridays
 - School holiday programmes
 - Printing/photocopying
 - Free wifi
 - Free membership to library
- Fundraise for resources – selling jam, raffles, withdrawn books
- Receive bulk loan 3-4 months
- Needing to increase usage by families
- Other community groups utilising library
 - South Auckland Choral Committee
 - Legacy Day Group
 - U3A Committee
 - Book Club



Drury Rural Library Holiday Programme



Pirate Day

"Thank you for putting this on. My son has learning needs and struggles with events like this. Everyone has been patient and helpful."



Lego and Games Day



Robot Day

"Thank you. I had so much fun with the robots. I loved learning how to make Codey Rocky to laugh."



Drury Rural Library

Next steps

- Health and Safety
 - Health and safety induction and declaration
 - Police checks
- Promotion
 - Open Day
 - Strengthen relationships with local daycares, kindergartens, schools and community groups
 - Advertise programmes/events in local paper, school newsletters
 - Flyer drops
- Increase number of programmes/ services offered
 - Storytimes/ wriggle and rhyme
 - Pop-up activities
 - JP services
 - Pop-up clinics for youth: CV writing, interview skills and study groups



Jo Brewster

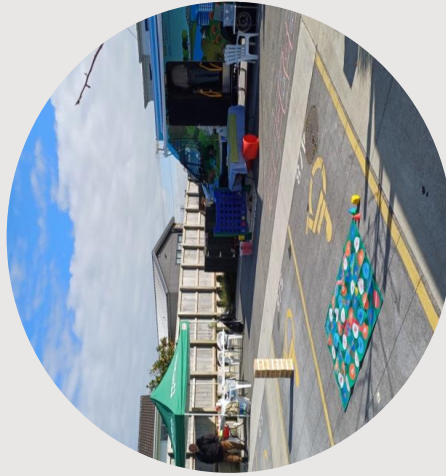


**Paataka koorero kaewa
(Mobile library & access
services)**

**Regional Support -
Community Impact**



Mobile Library Services for Social Housing and Older People



Sites:

- Sutton Rd, Drury – Kāinga Ora
- Porchester Rd, Papakura – Kāinga Ora
- Papakura Communicare Friendship Centre



Providing library loans, free WIFI, digital support, children's activities and opportunities for social connection



Visiting three Haumaru villages in 2025

- Pahurehure Flats, Papakura
- Waimana Court, Conifer Grove
- Conifer Grove Village, Conifer Grove



**Papakura
Local Board
Plan 2023
Ō Tātou Tangata
/ Our people**

The graphic features a large blue teardrop shape in the center containing the title. To the left, there is an illustration of three diverse people (two men and one woman) with green circular arrows around them, indicating a cycle or process. To the right, there is an illustration of two people (a man and a woman) looking at a document together. At the bottom, there are two stylized red faces with white eyes and red mouths. In the top right corner, there is a faint grey logo of a stylized plant or tree.

Tracey Hainsworth-Fa'aofo



351 - Support Māori-led Aspirations

Local board plan objective:
Māori are supported to achieve their goals and aspirations



